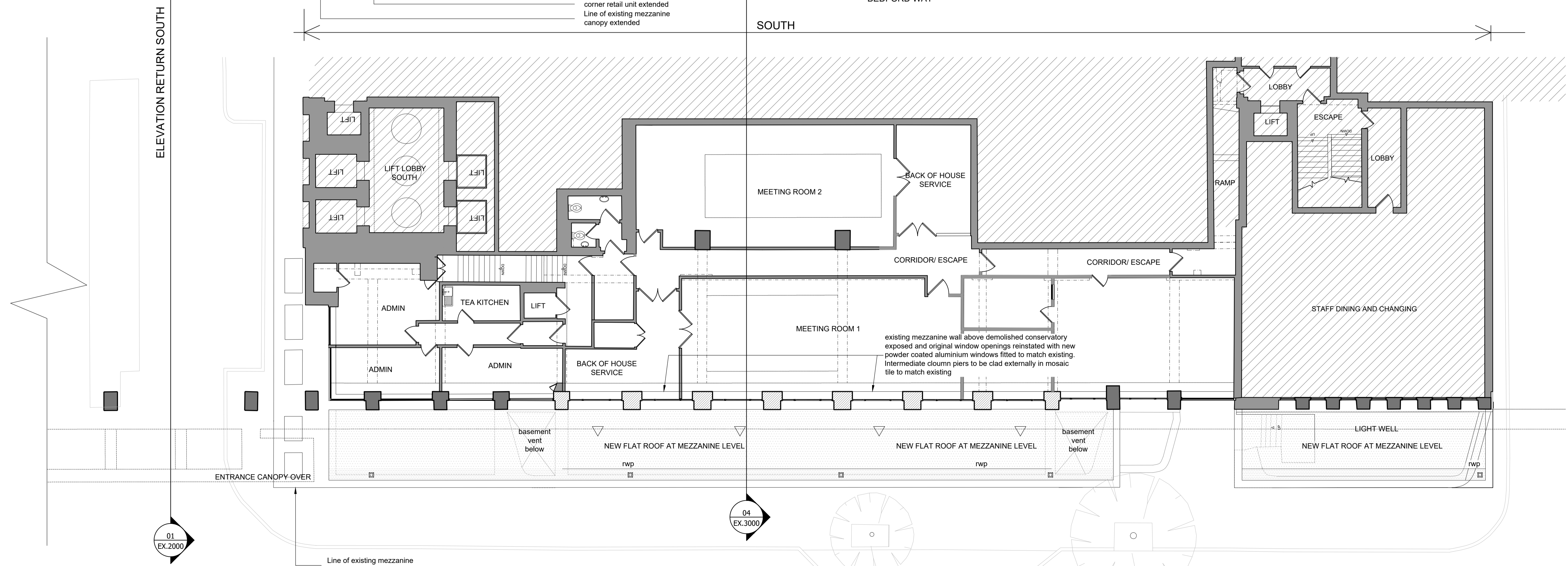


1 GROUND FLOOR DINING (SOUTH)
Scale: 1:100 @ A1



2 MEZZANINE LEVEL (SOUTH)
Scale: 1:100 @ A1

existing rail
open end

- 03 08.01.2018
* revise window arrangement - revert to original window rhythm as per existing
 - 02 30.11.2017
* Revise window sizes
* Reduce aluminium cladding
* Omit openers
 - 01 01.08.17 PSZ
* Revise structure around basement vents
* Extend corner retail unit
 - 00 01.08.17 PSZ
Issued for comment
- rev amendments date by

architects
ipa
55 Kingstown Street
London NW1 8JP
T + 44 (0) 20 7436 1133
W ipa-architects.com

Project
ROYAL NATIONAL HOTEL
38-51 BEDFORD WAY
LONDON
WC1H 0JX

Drawing Title
BEDFORD WAY - SOUTH
GROUND FLOOR
MEZZANINE LEVEL

Drawing Status
PROPOSED
Date 01/08/17 Drawn by PSZ
Scale A1 @1:100 A3 @1:200
Drawing No. 17H3.LO.1000 Rev 03
Cod File 17H3.LO.1000
© IPA Architects: All rights reserved.

