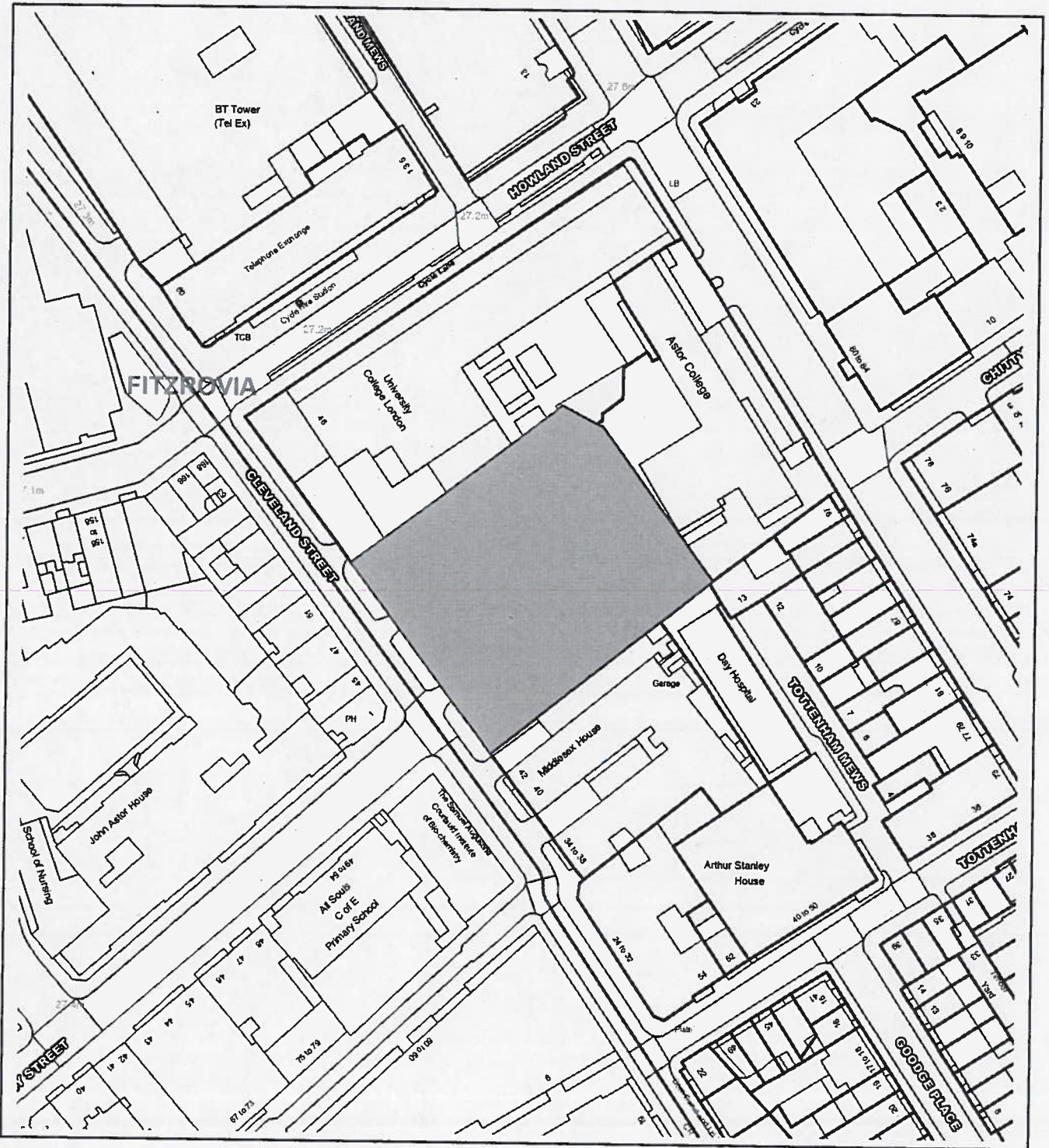


# SITE PLAN



This material has been reproduced from Ordnance Survey digital map data with the permission of the controller of Her Majesty's Stationery Office, © Crown Copyright.

B.  
RA  
~~RA~~  
R.M.













Notes:  
 - All dimensions to be checked on site  
 - Do not scale off floor of drawing  
 - All dimensions are in millimetres unless otherwise stated  
 - Refer to drawings for 'As Built' dimensions for 'As Built' dimensions  
 - It is accepted that 'As Built' dimensions may vary from 'As Designed' dimensions  
 - It is accepted that 'As Built' dimensions may vary from 'As Designed' dimensions



Units Schedule L06		
Unit Number	Unit Name	GIA (m <sup>2</sup> )
A03	1B/2P	50.0
A1SR01	3B/4P	99.8
A1SR02	3B/4P	93.8
A1SR03	3B/6P	118.6

Note: Areas are highlighted for each floor of the building in the drawings and the legend area.

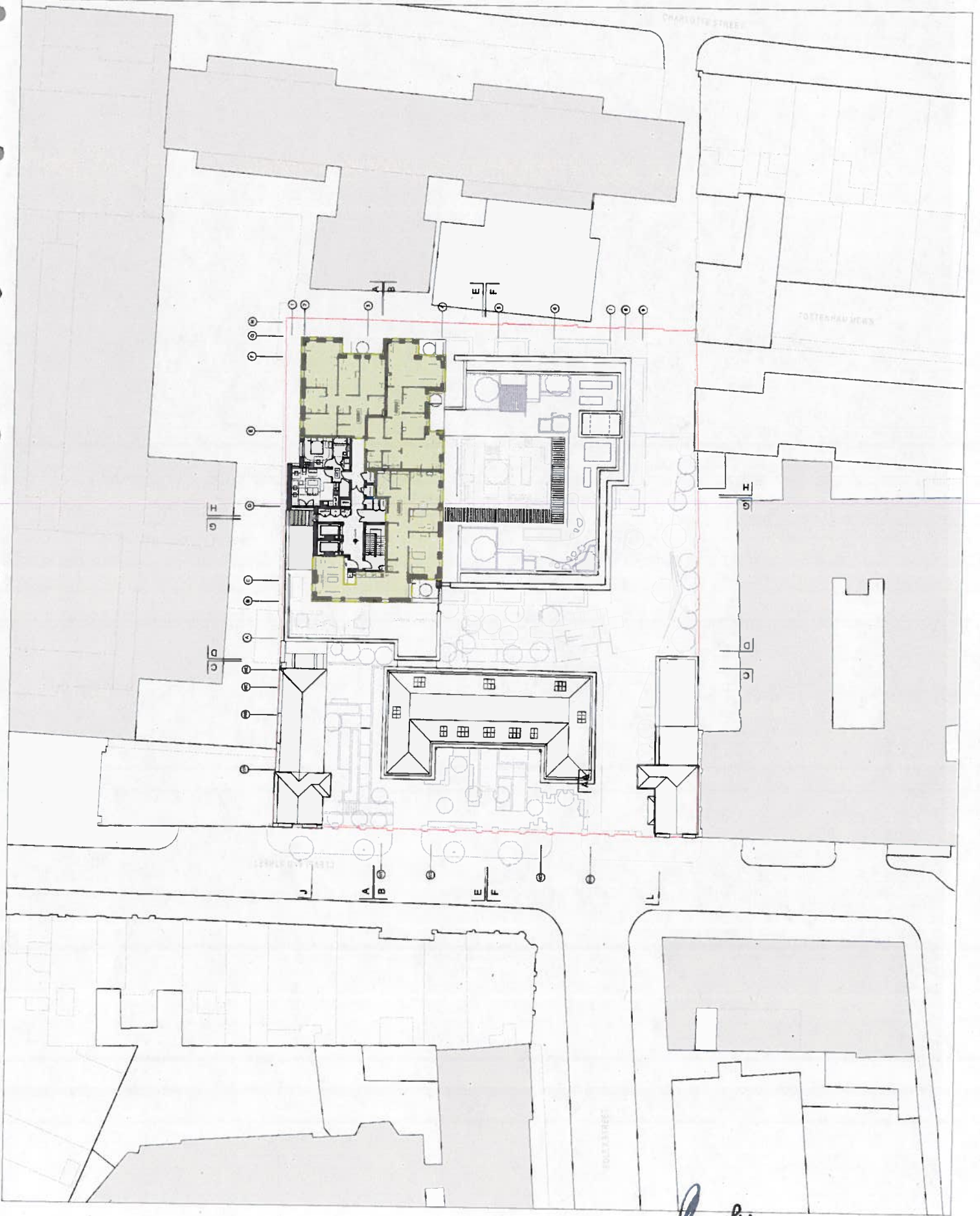


No.	Revisions	Description	Date	By
1	Issue for Consultation		020 7061 7000	AECOM
2	Issue for Consultation		020 7656 1531	Arup
3	Issue for Consultation		020 7990 3360	Equus Consulting
4	Issue for Consultation		020 7394 3700	TEMPLE
5	Issue for Consultation			Middlesex Hospital Amex
6	Issue for Consultation			University College London
7	Issue for Consultation			Hospitals Charity (UCLHC)
8	Issue for Consultation			Affordable Social Rented
9	Issue for Consultation			Level 6

Project Number: LD15078.00  
 Drawing Number: S106-AFFSR-06  
 Scale: B1  
 Date: 1.2017  
 14-11-2017  
 Architects: LEWELYN DAVIES

**LEWELYN DAVIES**

3rd floor, 1, 20 Park Square, London, E1 1HT, UK  
 T: +44 (0)20 7617 7000 | E: l.davies@lewelyn.com  
 www.lewelyn.com



Handwritten initials and notes at the bottom of the page.

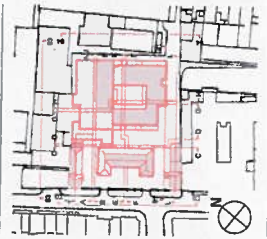






Notes

- All dimensions to be checked on site
- Do not scale off this drawing
- Refer to notes on drawings for any additional information related to this drawing
- It is the responsibility of the client to ensure that the information provided is correct and up to date
- It is the responsibility of the client to ensure that the information provided is correct and up to date



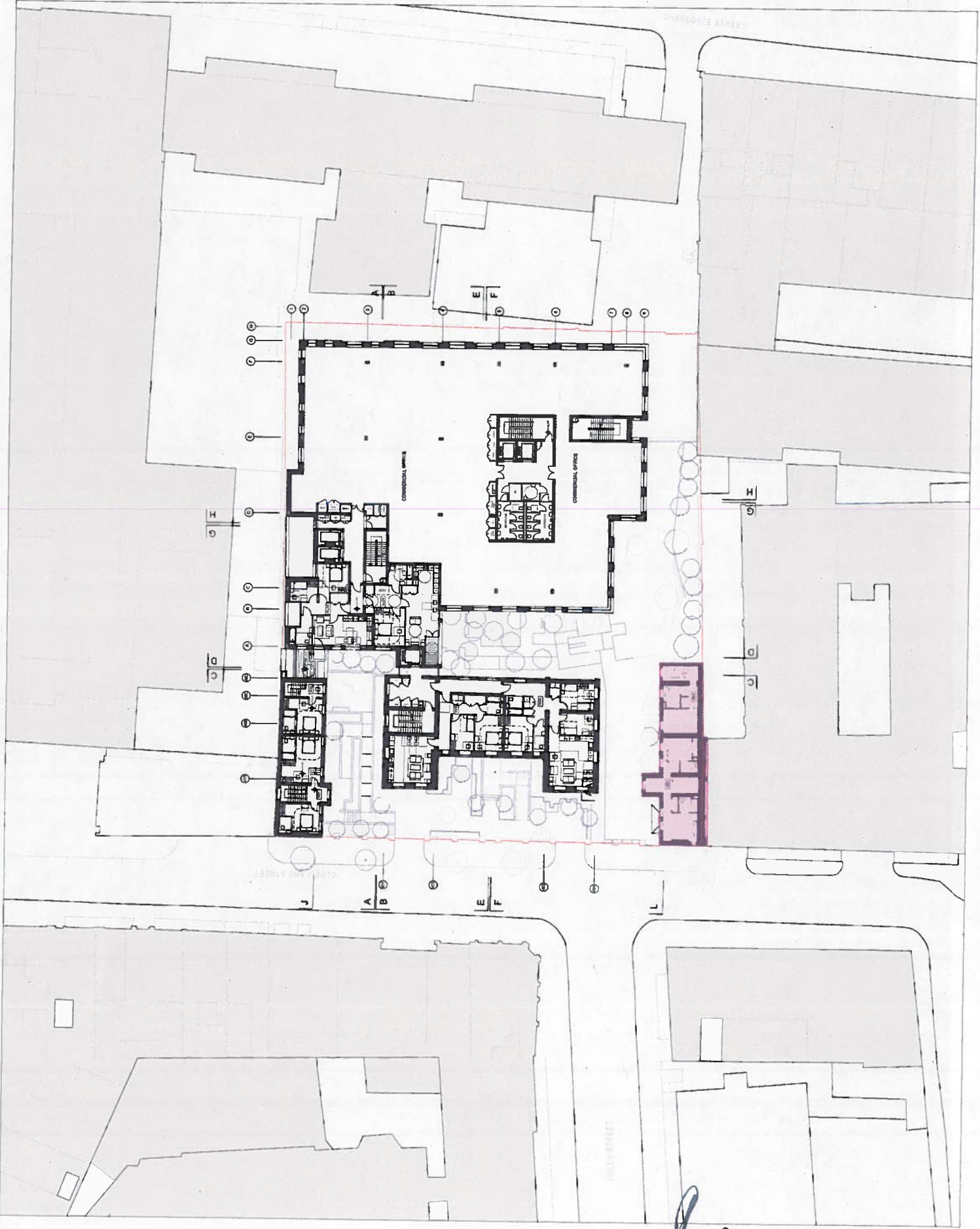
0 2 4 6 8 10

Units Schedule L02		
Unit Number	Unit Name	GIA (m <sup>2</sup> )
A101	2B4P	54.7
A102	1B2P	33.6
A103	2B3P	65.8
A104	1B2P-WA	71.5
M01	3B4P	54.9
M02	2B3P	28.5
M07	2B3P	78.8
M08	3B4P	107.5

Note: areas are scheduled for each floor of the townhouse and the studio units.

Affordable Intermediate

Mr. Robinson, Development  
 AECOM 020 7061 7000  
 Project Number  
 A101 020 7636 1531  
 Equas Consulting 020 7560 3360  
 TEMPLE 020 7394 3700  
 Middlesex Hospital Annex  
 University College London  
 Hospitals Charity (UCLHC)  
 Drawing Title  
 Affordable Intermediate  
 Level 2  
 Project Number  
 LD15078.00 S106-APPINT-02  
 Scale 1:200  
 Date  
 14-11-2017  
 Architects  
**LLEWELYN DAVIES**  
 3rd floor, 1-3, Ashmore Place, London, E1W 1JU  
 T: +44(0)20 7637 7300 E: lloyd@lloyd.com www.lloyd.com



PK 14/11/17



