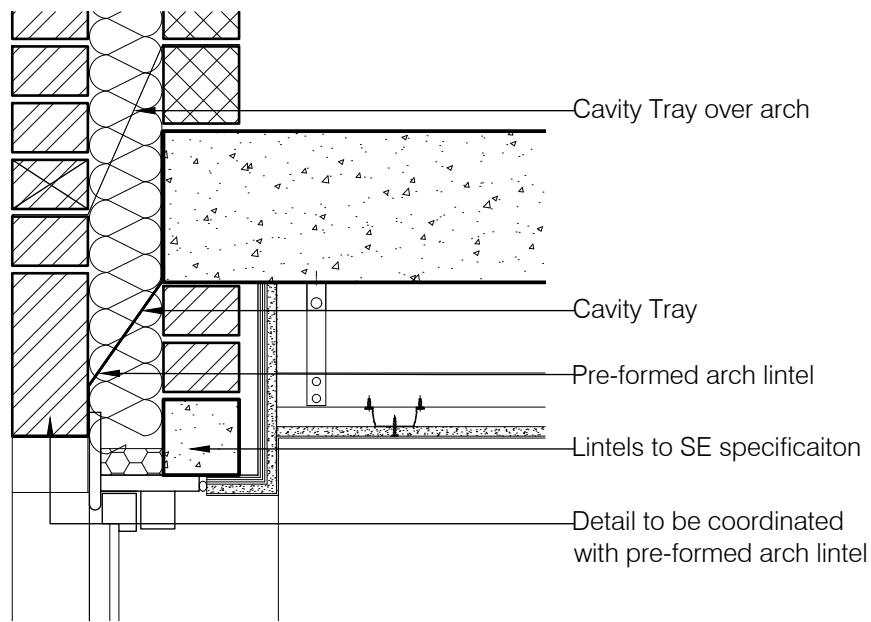
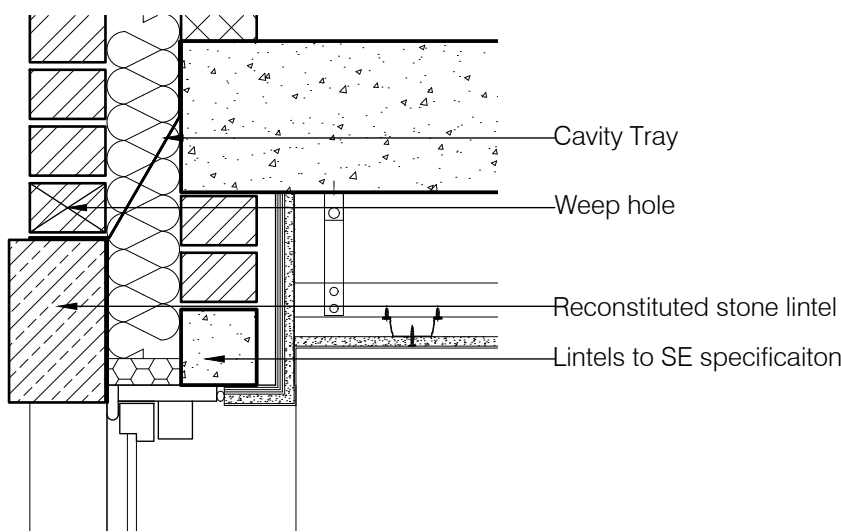


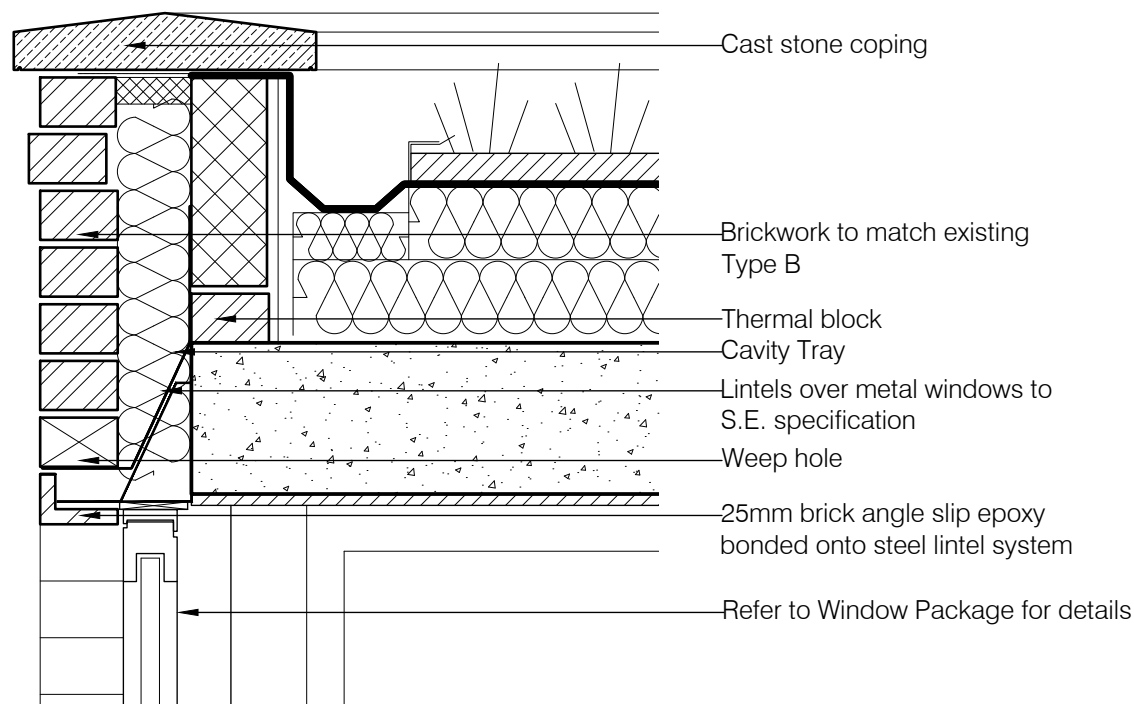
Detail 1  
Typical Mock Tudor window head detail  
1:10 @ A1



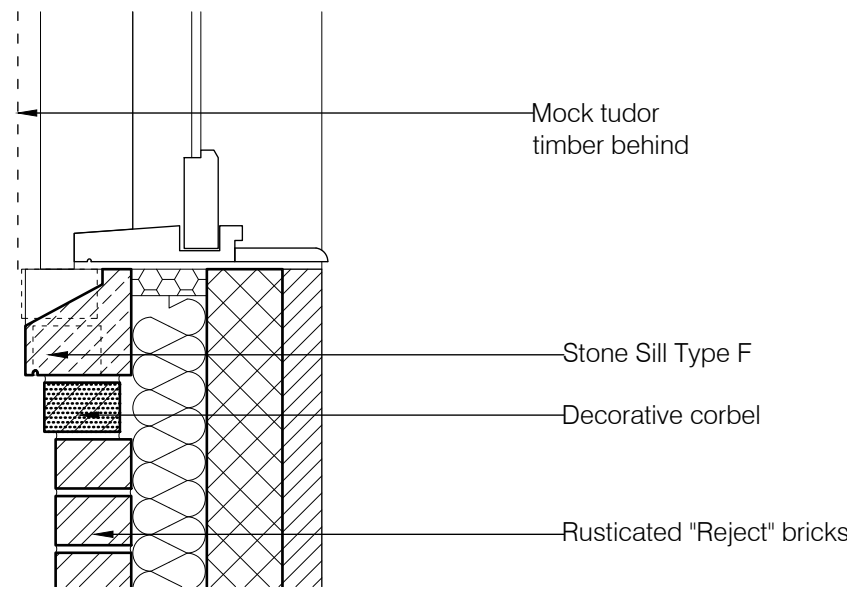
Detail 2  
Typical segmental arch window head detail  
1:10 @ A1



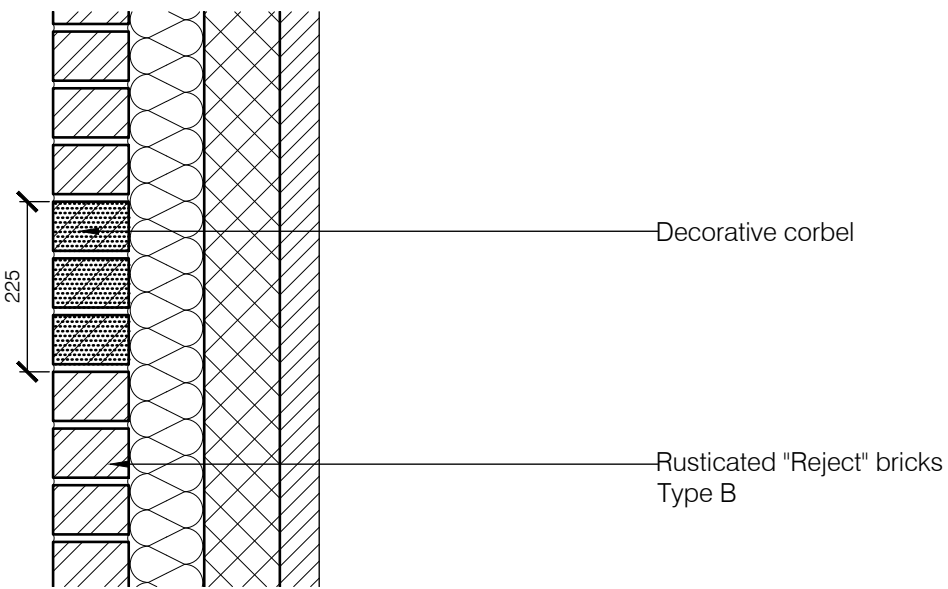
Detail 3  
Typical stone lintel window head detail  
1:10 @ A1



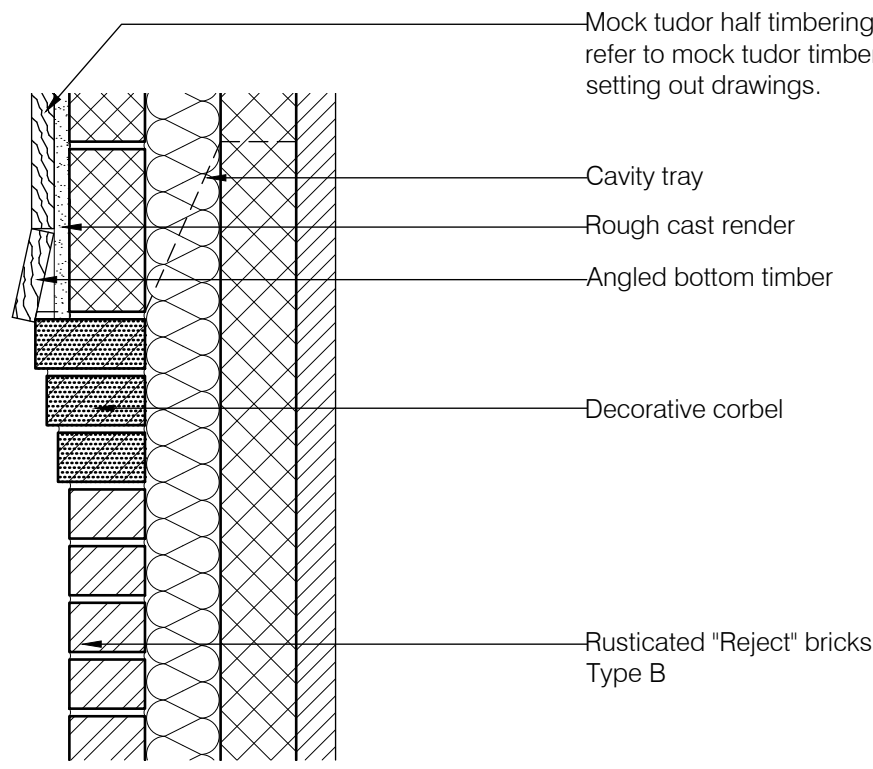
Detail 4  
Typical metal window head detail  
1:10 @ A1



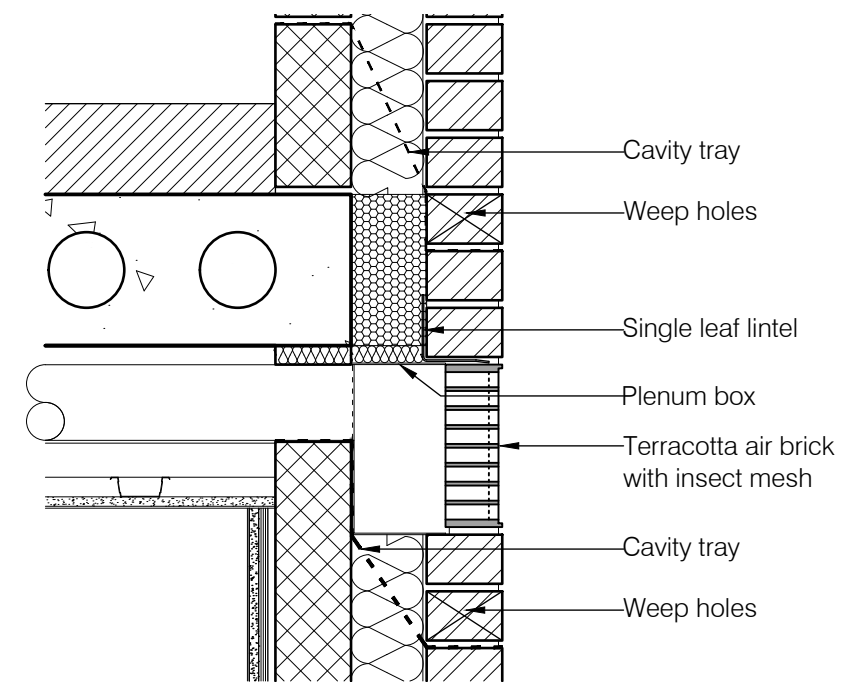
Detail 5  
Typical Corbel Detail at Sill  
1:10 @ A1



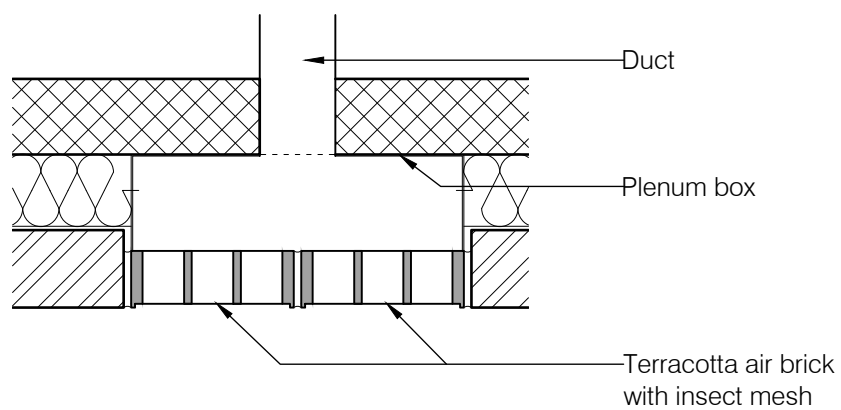
Detail 6  
Typical Corbel Detail  
1:10 @ A1



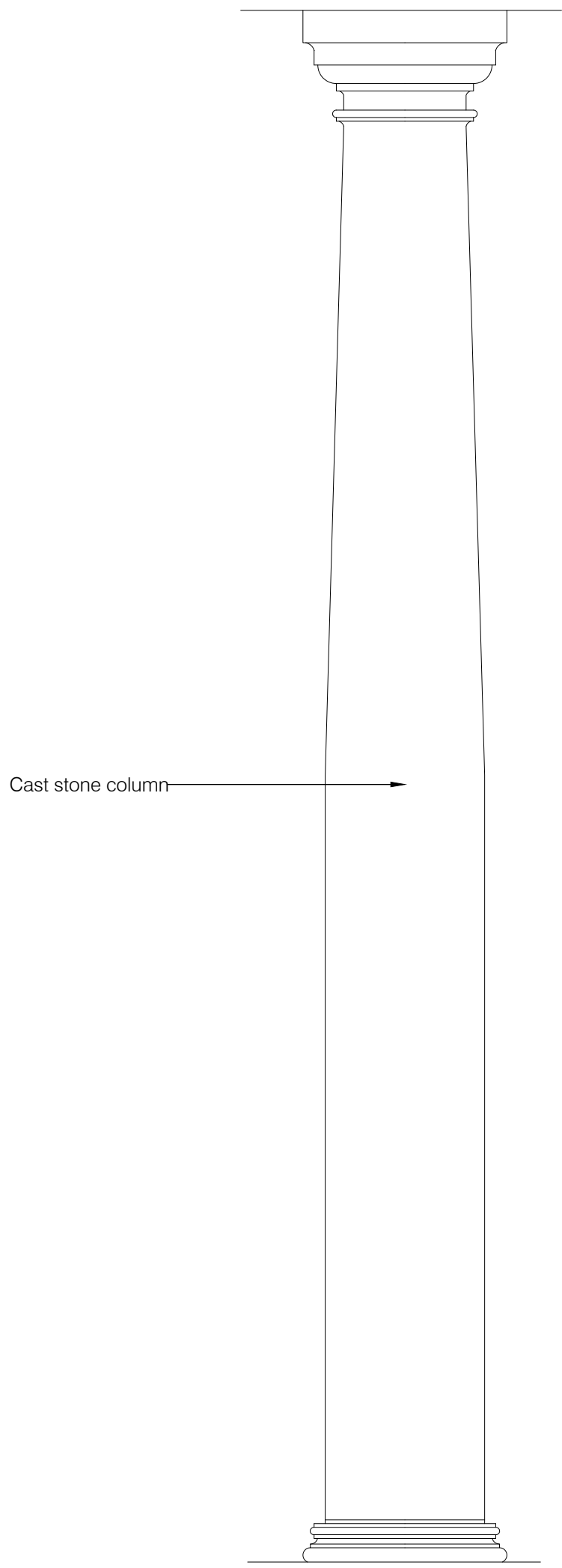
Detail 7  
Typical Corbel - Mock Tudor Detail  
1:10 @ A1



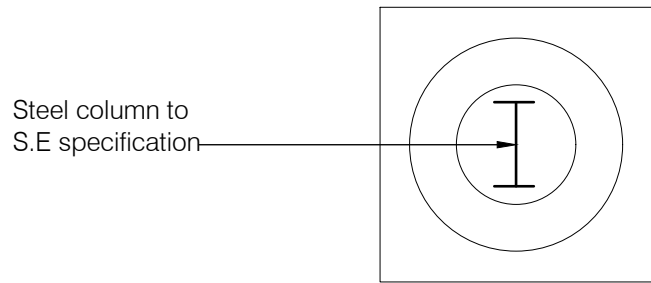
Detail 11  
Typical Double Air Brick - Section  
1:10 @ A1



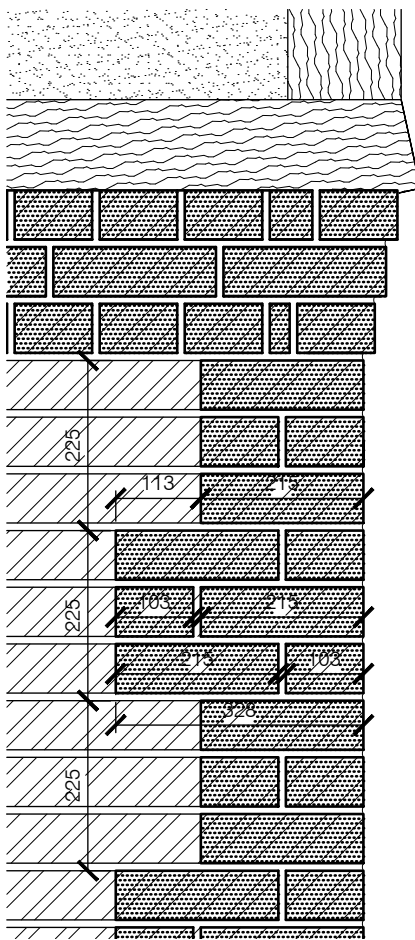
Detail 12  
Typical Double Air Brick - Plan  
1:10 @ A1



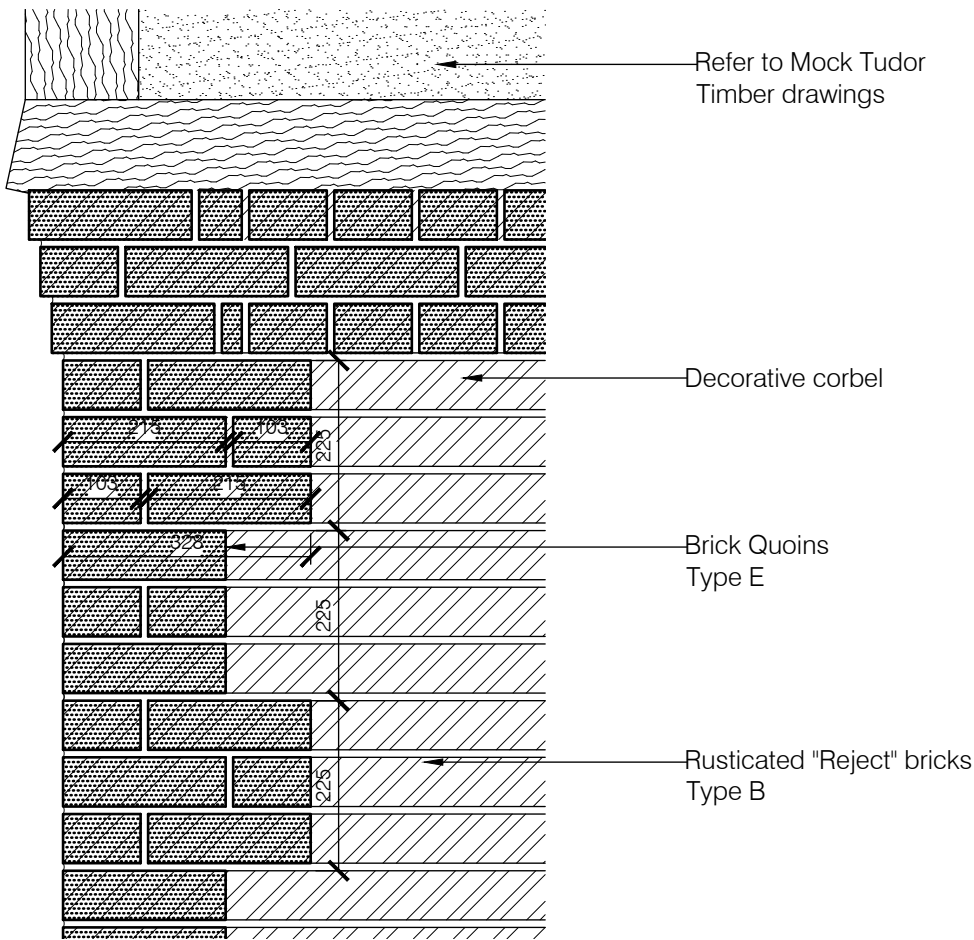
Detail 10  
Cast Stone Column Elevation  
1:10 @ A1



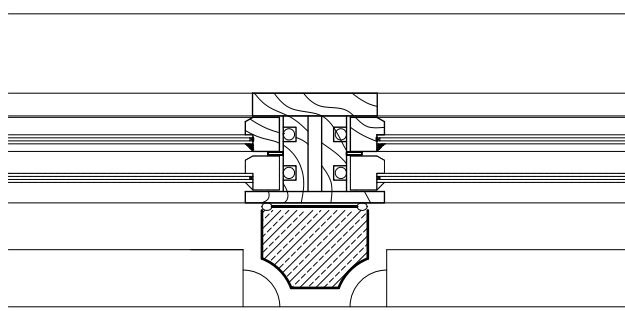
Detail 10  
Cast Stone Column Plan  
1:10 @ A1



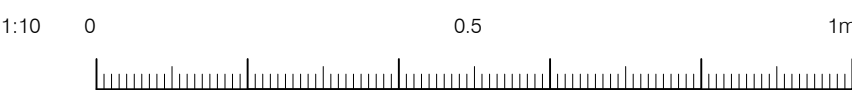
Detail 8  
Front Elevation  
Quoin Detail  
1:10 @ A1



Detail 9  
Side Elevation  
Quoin Detail  
1:5 @ A1



Detail 13  
Typical Sash window Mullion Detail  
1:10 @ A1



Rev	Date	Details	Drawn by	Checked by
A	10/07/17	Preliminary issue for information / comment	PV	BL
B	06/12/17	Amendment to timber boarding	CM	BL
C	10/01/18	Issue for condition 2 discharge	CM	BL

This contract must state all dimensions, levels and levels prior to commencement of any work. Box Architects is not responsible for any errors or omissions in the drawings. The contractor is responsible for ensuring all work complies with all relevant building regulations and standards. The drawings are the property of Box Architects and shall remain the property of Box Architects. No part of the drawings may be reproduced without the written permission of Box Architects.

Read in conjunction with drawings:  
(03)15 to (03)39



client name		S & T (Ltd)	
project		18-20 Elsworth Road London NW3 3DJ	
title		Masonry Details I	
status		Planning	
date		06/07/1017	PV
scale		1:10@A1	BL
drawing number		(03) 17	
revision		C	832-01
		job number	

box architects

1 CN Square, Leeds, LS1 2ES

T 0113 2441133 E info@boxarchitects.co.uk

2 Angel Square, London EC1V 4NY

