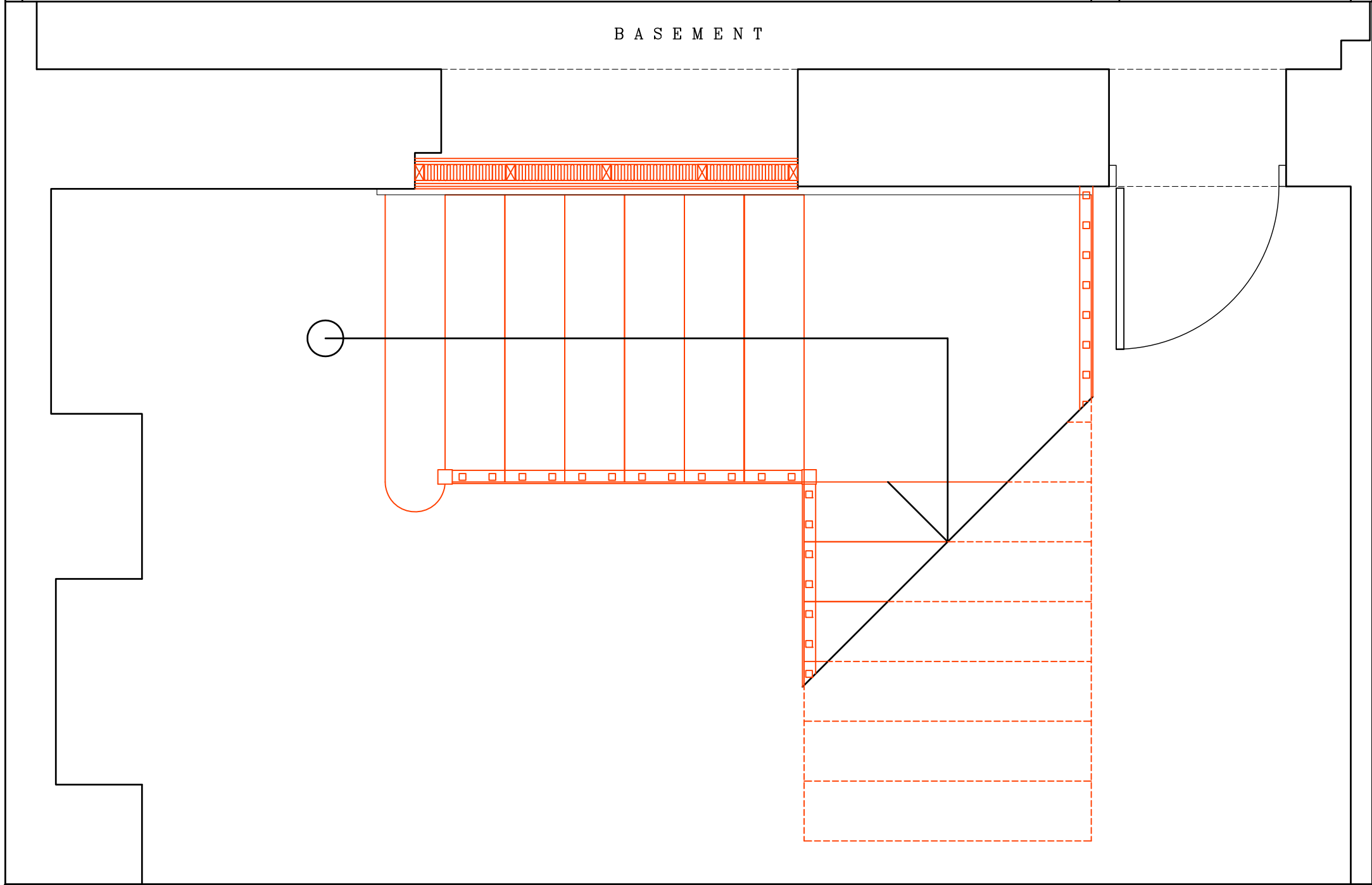


G R O U N D

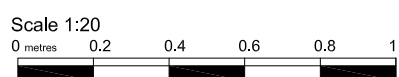


B A S E M E N T

Gregory Munson RIBA . architect

REVISIONS

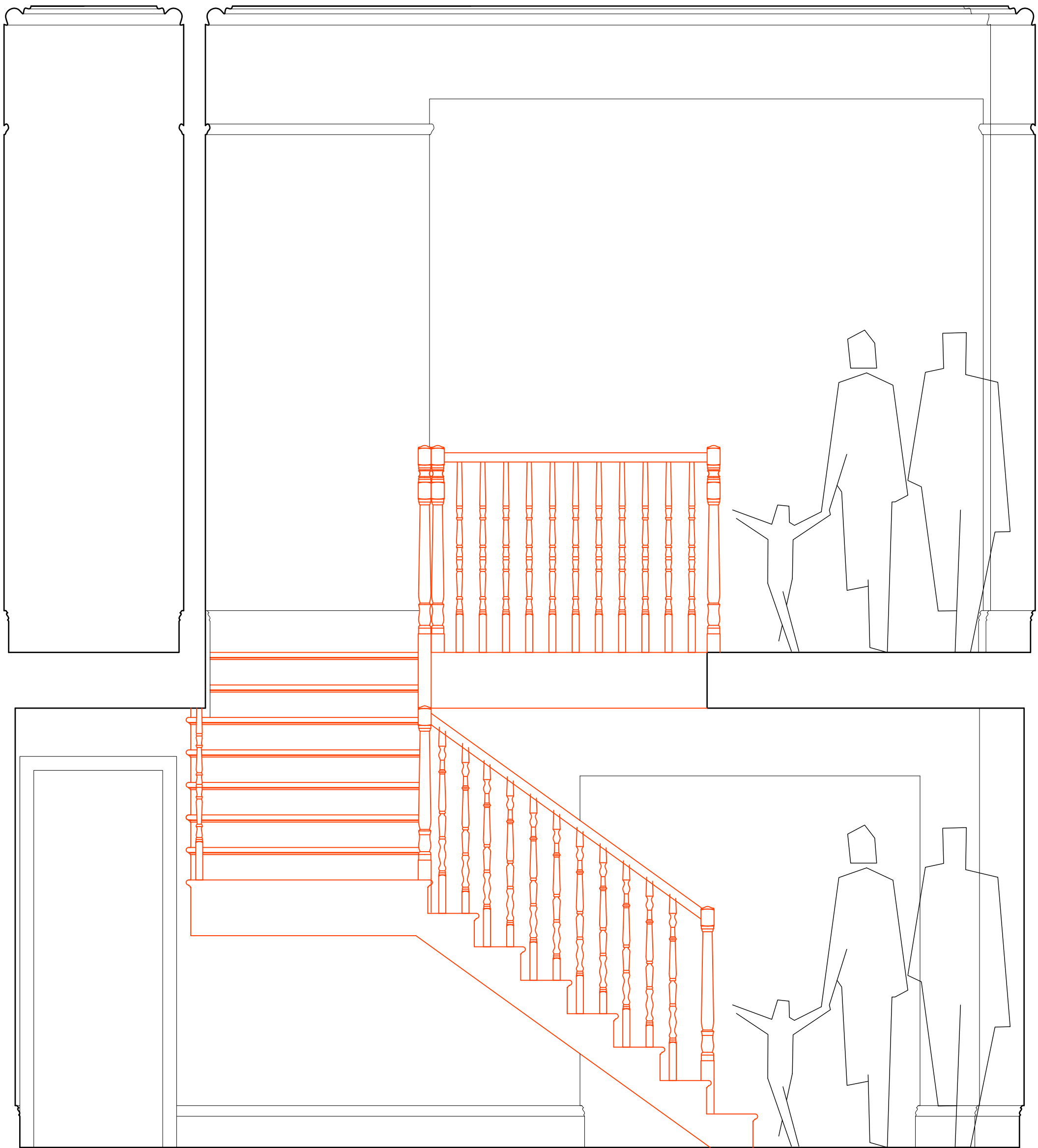
-



New basement stair
Detail plans
Proposed

30 Museum Street, WC1A 1LH
for P Athill Esq.

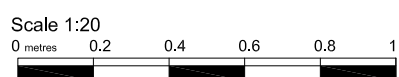
SCALE	DATE	DWG.No	REV
1:20@A3	08.01.18	DE1	-



Gregory Munson RIBA . architect

REVISIONS

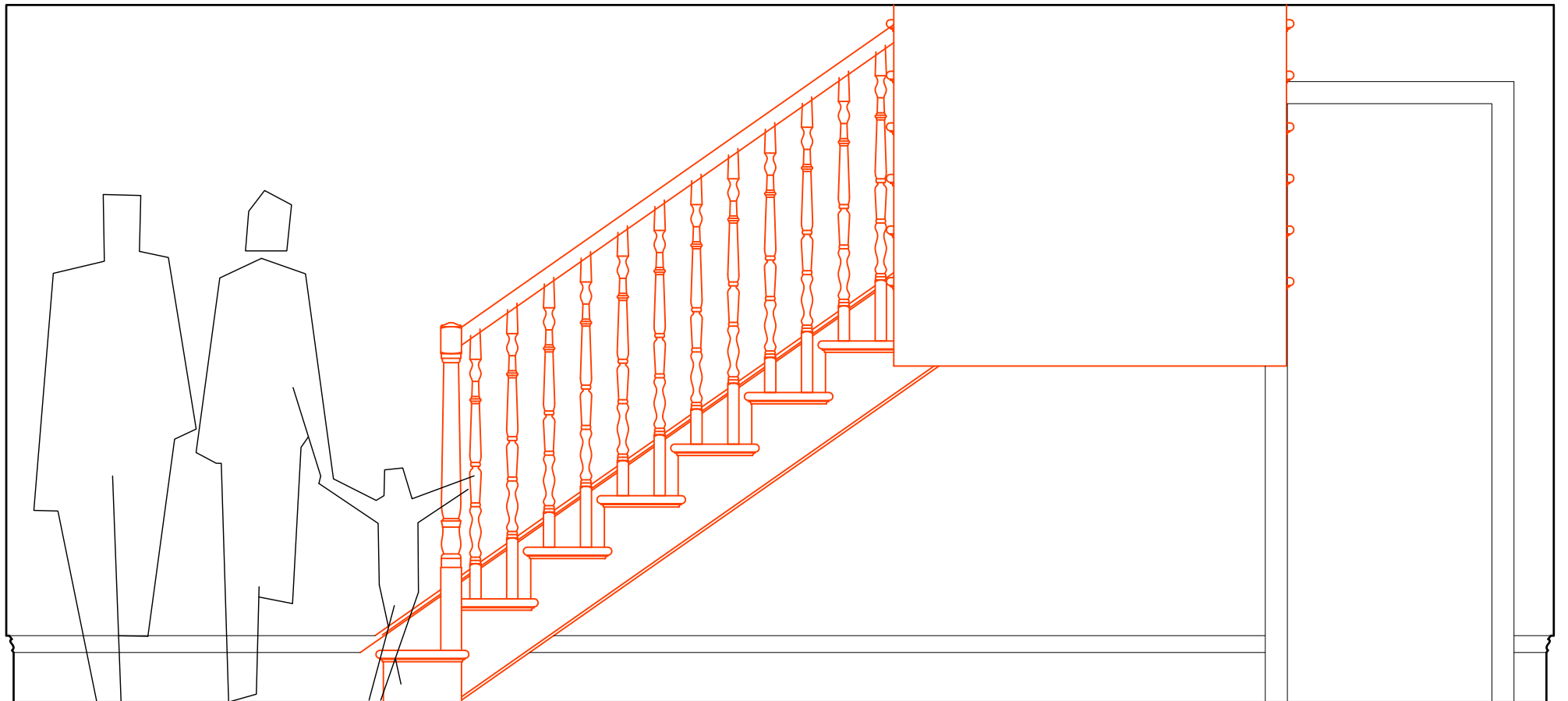
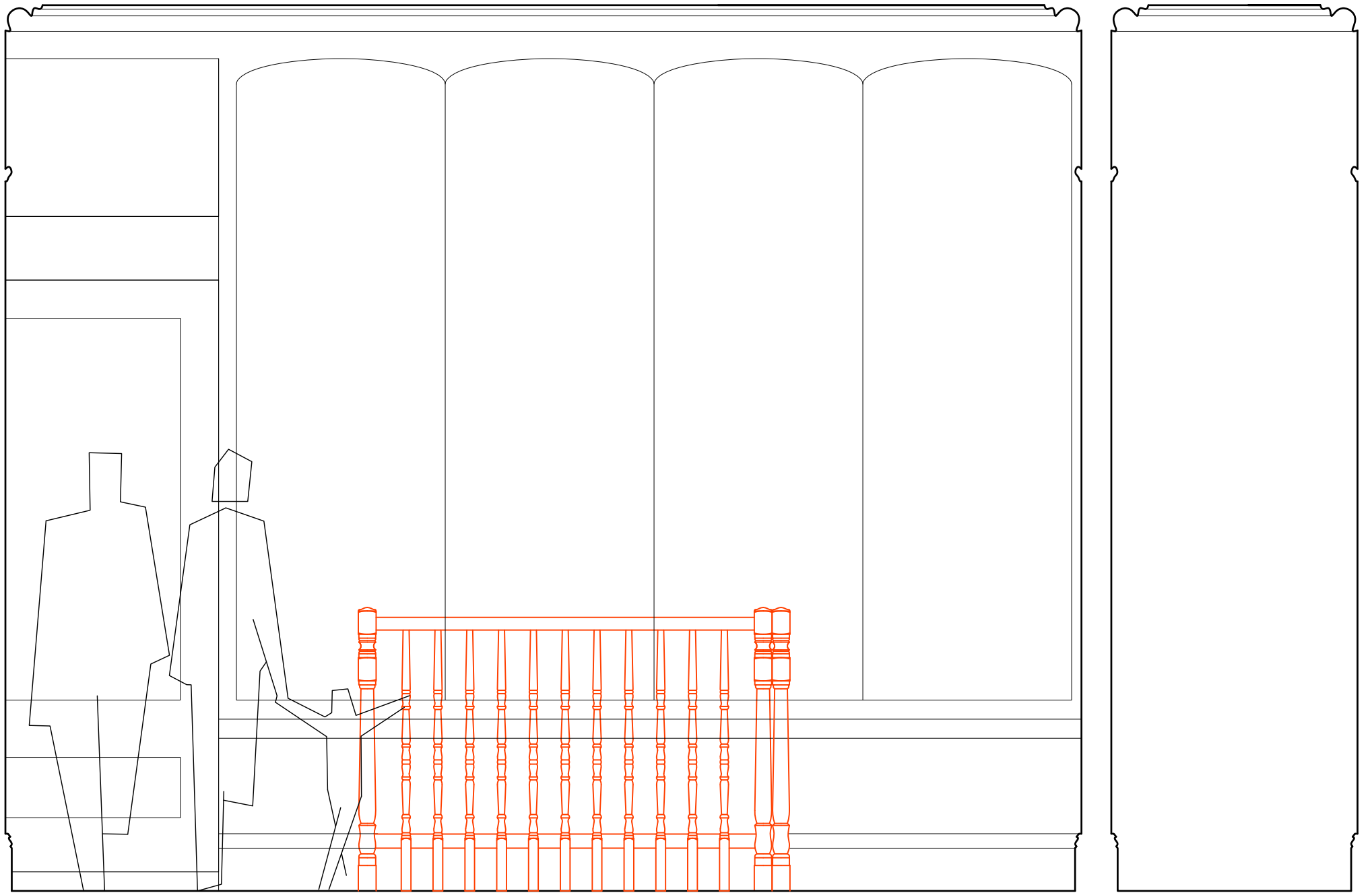
-



New basement stair
Detail section towards shop
Proposed

30 Museum Street, WC1A 1LH
for P Athill Esq.

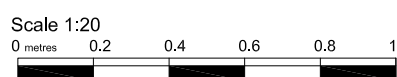
SCALE	DATE	DWG.No	REV
1:20@A3	08.01.18	DE2	-



Gregory Munson RIBA . architect

REVISIONS

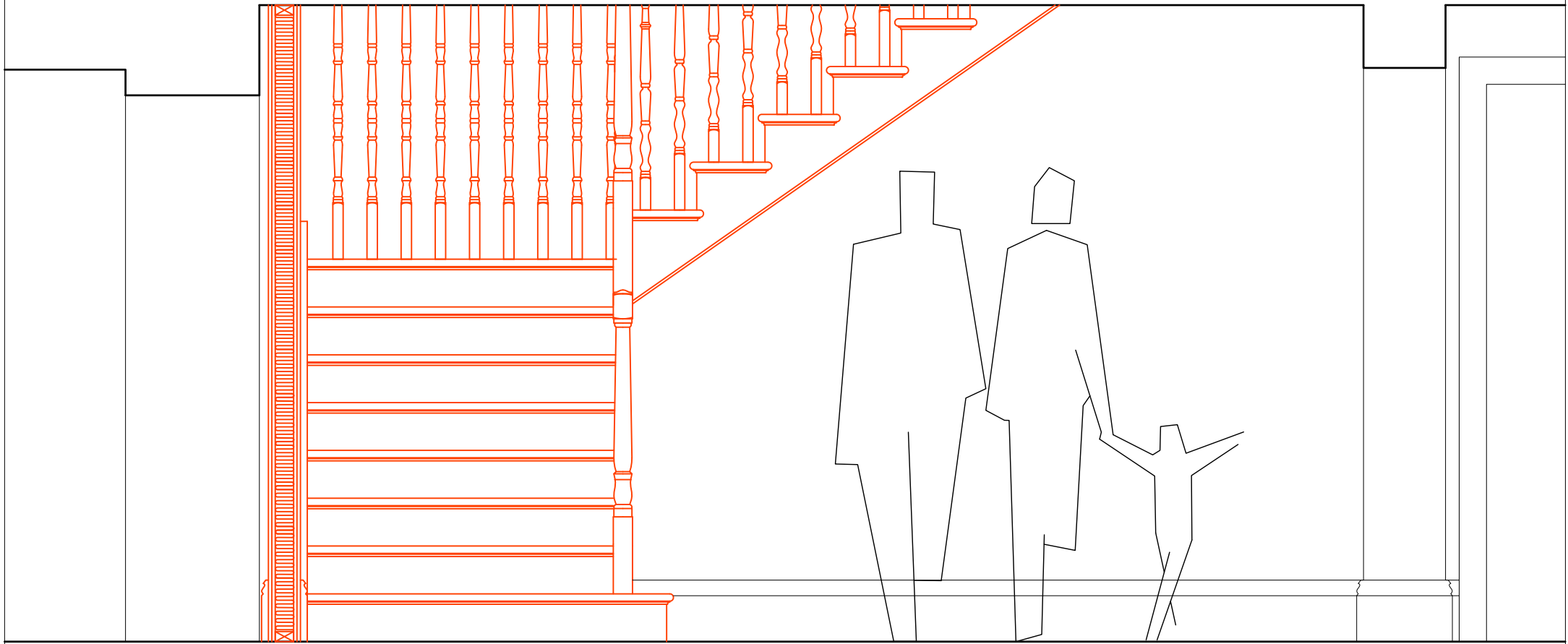
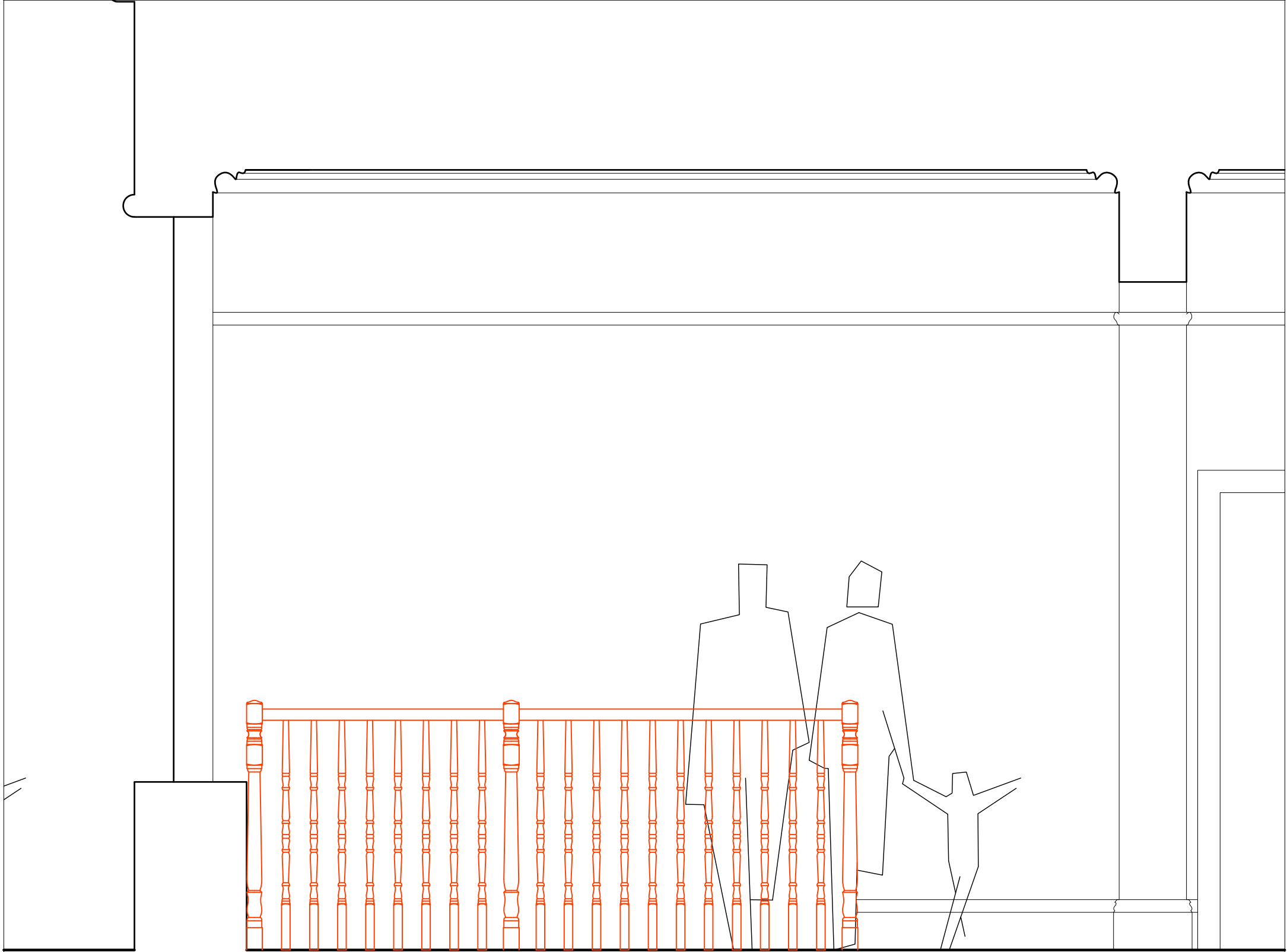
-



New basement stair
Detail section toward street
Proposed

30 Museum Street, WC1A 1LH
for P Athill Esq.

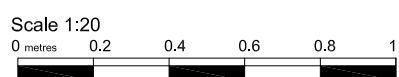
SCALE	DATE	DWG.No	REV
1:20@A3	08.01.18	DE3	-



Gregory Munson RIBA . architect

REVISIONS

-



New basement stair
 Detail long southwards
 Proposed

30 Museum Street, WC1A 1LH
 for P Athill Esq.

SCALE	DATE	DWG.No	REV
1:20@A3	08.01.18	DE4	-