



INSIDE REAR SHED



VIEW BETWEEN HOUSES IN LYME ST.
LISTED

181-183 ROYAL COLLEGE ST. AUG 93.



FRONTAGE





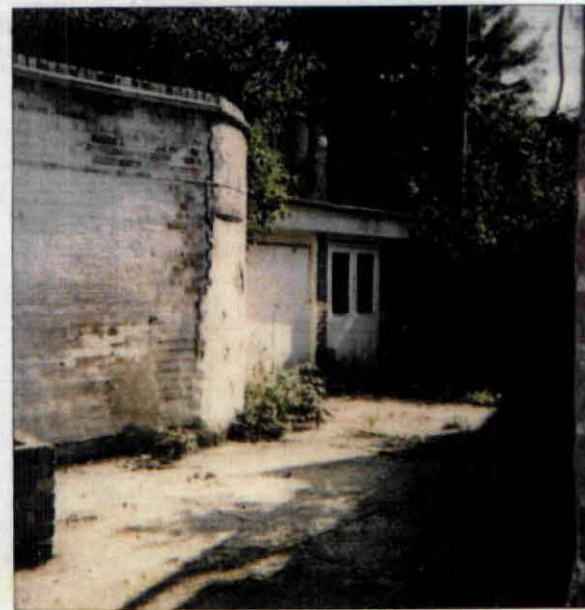


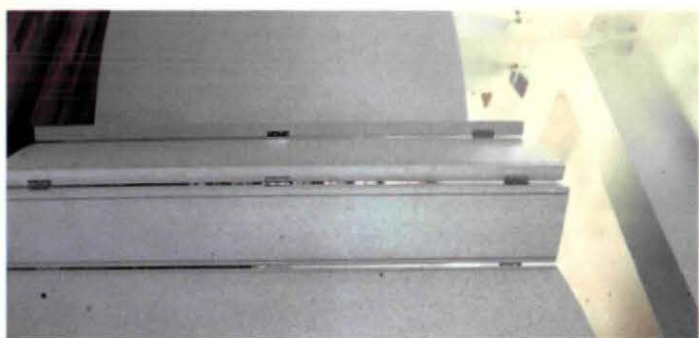
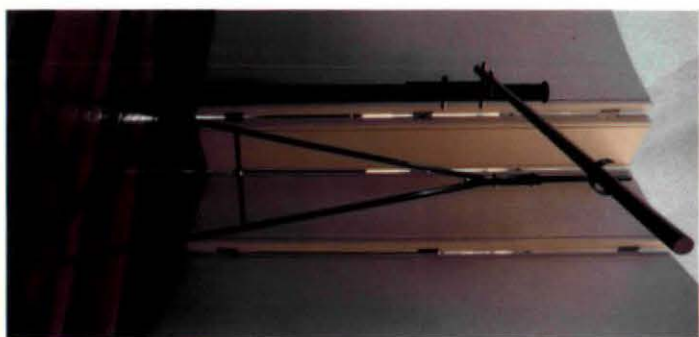


3.15pm 3/11/7 97
7/8 Lyme St











- 'FORTUNY' FASHION SHOPS FOR DAVID GERSTEIN,
LONDON.

- COMMISSION FOR THE COMPLETE CONCEPT
DESIGN AND CORPORATE IMAGE OF THE
'FORTUNY' CHAIN OF FASHION SHOPS. ALL
ELEMENTS WERE DESIGNED INCLUDING THE
INTERIOR, THE FURNITURE, THE LIGHTING, THE
GRAPHICS AND THE CARRIER BAGS.

- PHOTOGRAPHED BY MICHAEL HARRIS.

EVERARD + GRAVES ARCHITECTS



R



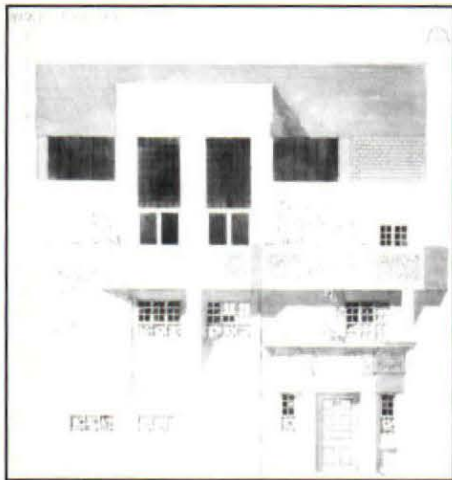
- NEW FILM PRODUCTION FACILITY FOR BRIAN
EASTMAN OF PICTURE PARTNERSHIP
PRODUCTIONS LTD, LONDON.

- PHOTOGRAPHED BY MICHAEL HARRIS.

EVERARD + GRAVES ARCHITECTS







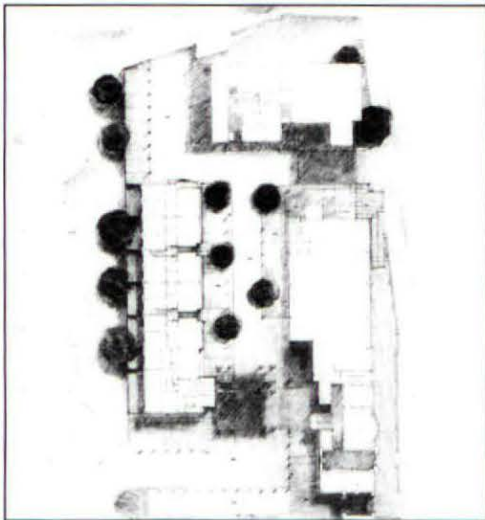
- RESTORATION OF THE STUDIO FOR FRANK MILES BY E.W. GODWIN.

- THIS GRADE II* LISTED STUDIO WAS ASSOCIATED WITH OSCAR WILDE AT THE TURN OF THE CENTURY.

- PHOTOGRAPHED BY LINDSEY STEWART.

EVERARD + GRAVES ARCHITECTS





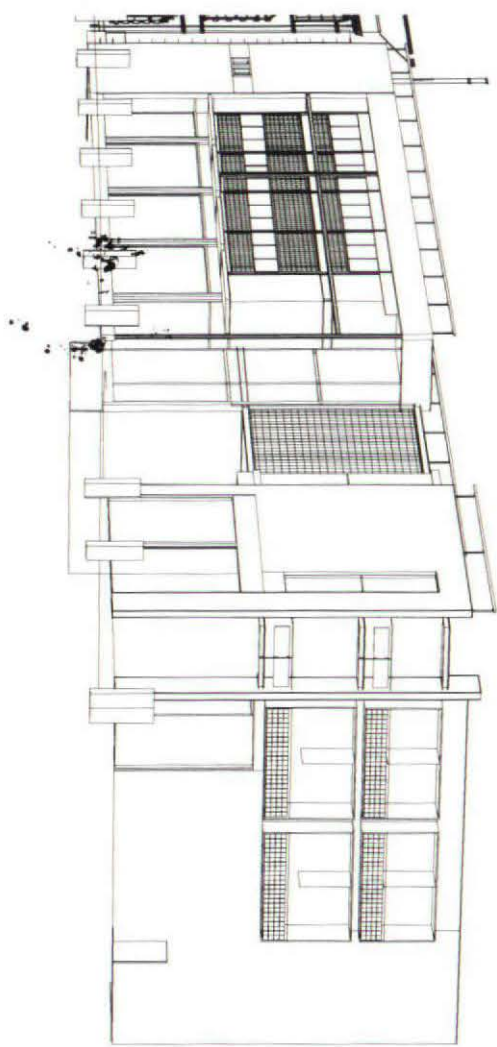
- GLOBE COURT MIXED DEVELOPMENT, BETHNAL GREEN, LONDON.

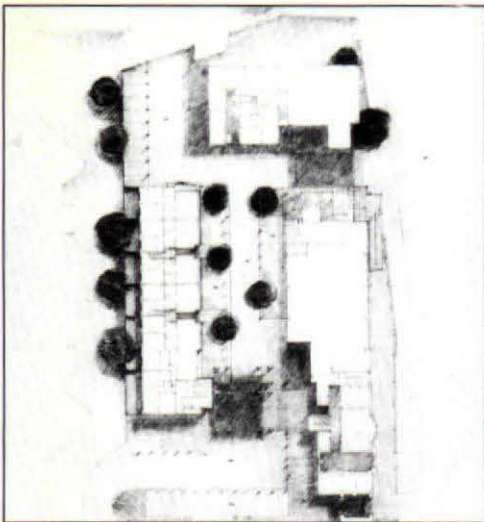
- A KEY PART OF THIS DEVELOPMENT IS THE 10,000ft² HEALTH CENTRE FOR THE BETHNAL GREEN MEDICAL MISSION AND THE 4,000ft² CLINIC FOR THE ROYAL LONDON HOSPITAL TRUST. ALSO INCLUDED ARE 4,000ft² SHOPS, 8,400ft² OFFICES AND 49 FLATS.

- COMPUTER GENERATED PERSPECTIVE BY CHARLES EVERARD.

EVERARD + GRAVES ARCHITECTS







- GLOBE COURT MIXED DEVELOPMENT, BETHNAL GREEN, LONDON.

- A KEY PART OF THIS DEVELOPMENT IS THE 10,000ft² HEALTH CENTRE FOR THE BETHNAL GREEN MEDICAL MISSION AND THE 4,000ft² CLINIC FOR THE ROYAL LONDON HOSPITAL TRUST. ALSO INCLUDED ARE 4,000ft² SHOPS, 8,400ft² OFFICES AND 49 FLATS.

- COMPUTER GENERATED PERSPECTIVE BY CHARLES EVERARD.

EVERARD + GRAVES ARCHITECTS

Replied by phone 5/10.94

Kathy Blair. 28.9.94.

LON. BOROUGH OF CAMDEN

DEPT OF PLANNING

5TH FLOOR, TOWN HALL

ARCEL ST ENTRANCE

LONDON BOROUGH OF CAMDEN
PLANNING DEPARTMENT
RECEIVED ON

Dear Ms Blair

RE. 19.183 ROYAL COLLEGE ST

Thank you for your
brie the other week.

Please can you

confirm your

views.

Yours sincerely

Charles Everard.



