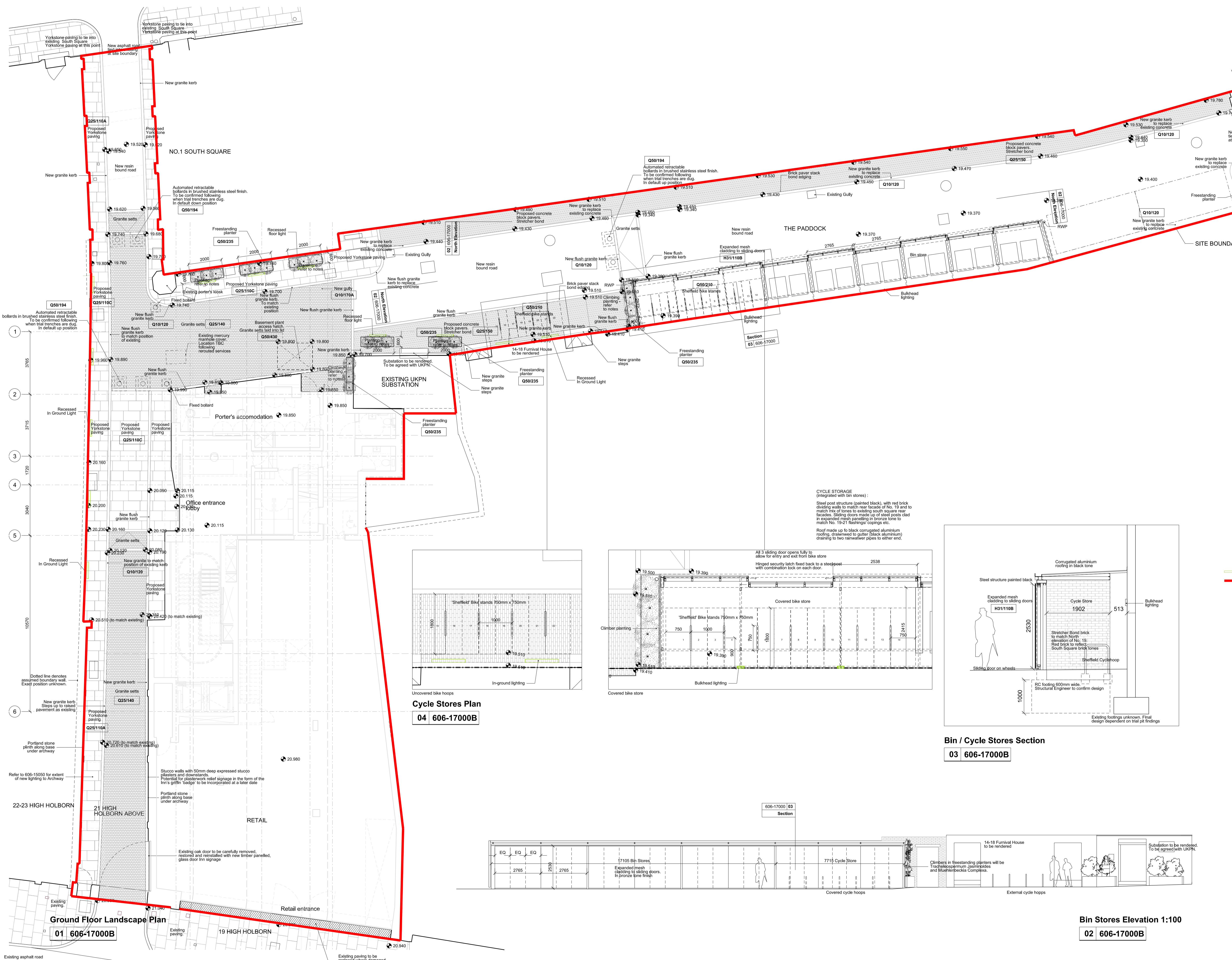


DO NOT SCALE FROM THIS DRAWING.
CONTRACTOR TO CHECK ALL DIMENSIONS ON SITE.
ANY DISCREPANCIES TO BE REPORTED TO THE ARCHITECT IMMEDIATELY.

COPYRIGHT RICK MATHER ARCHITECTS LLP ©



NOTES:
Read in conjunction with 606-17001 illustrating indicative planting and hard landscaping materials.

All existing Yorkstone to be carefully removed and stored to be restored and reused where possible.

PLANTING:
Planting in freestanding planters (Refer to 606-17001 for more information on species):
Small shrubs, grasses and ferns in freestanding planters will be selected from Hydrangea Annabelle, Pittosporum, Anemone, Liriodendron, Liriope Muscari, Adiantum Aleuticaum, Aster Frikantil Monch, Hellebores, and Astelia

Climbers in freestanding planters will be Trachelospermum Jasminoides and Muehlenbeckia Complexa.
Small young trees grown in planters will be Robinia Pseudoacacia

CYCLE STORAGE:
Cycle storage provision designed to Camden Planning Guidance CP37 for cycle storage, relating to Core Strategy Policy CS11 Promoting sustainable and efficient travel and Development Policies DP17 Walking, cycling and public transport and DP19 Parking standards and limiting the availability of parking.

22 Cycle spaces (11 hoops) are provided of which 14 are covered and secure, with 8 external for visitors/ short stays etc.

Lighting
Application boundary

REV	DATE	DESCRIPTION
P1	04.01.18	ISSUED FOR CAMDEN APPROVAL
REV		

KEY PLAN

INFORMATION

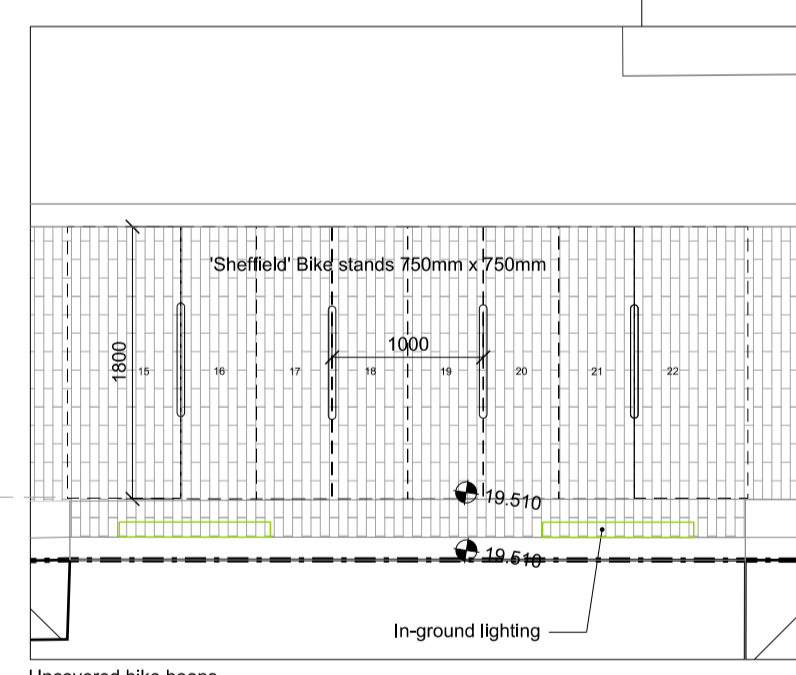
RICK MATHER ARCHITECTS ©

123 Camden High Street London NW1 7JR
T: 020 7284 1721 F: 020 7281 7626
info@rickmather.com www.rickmather.com

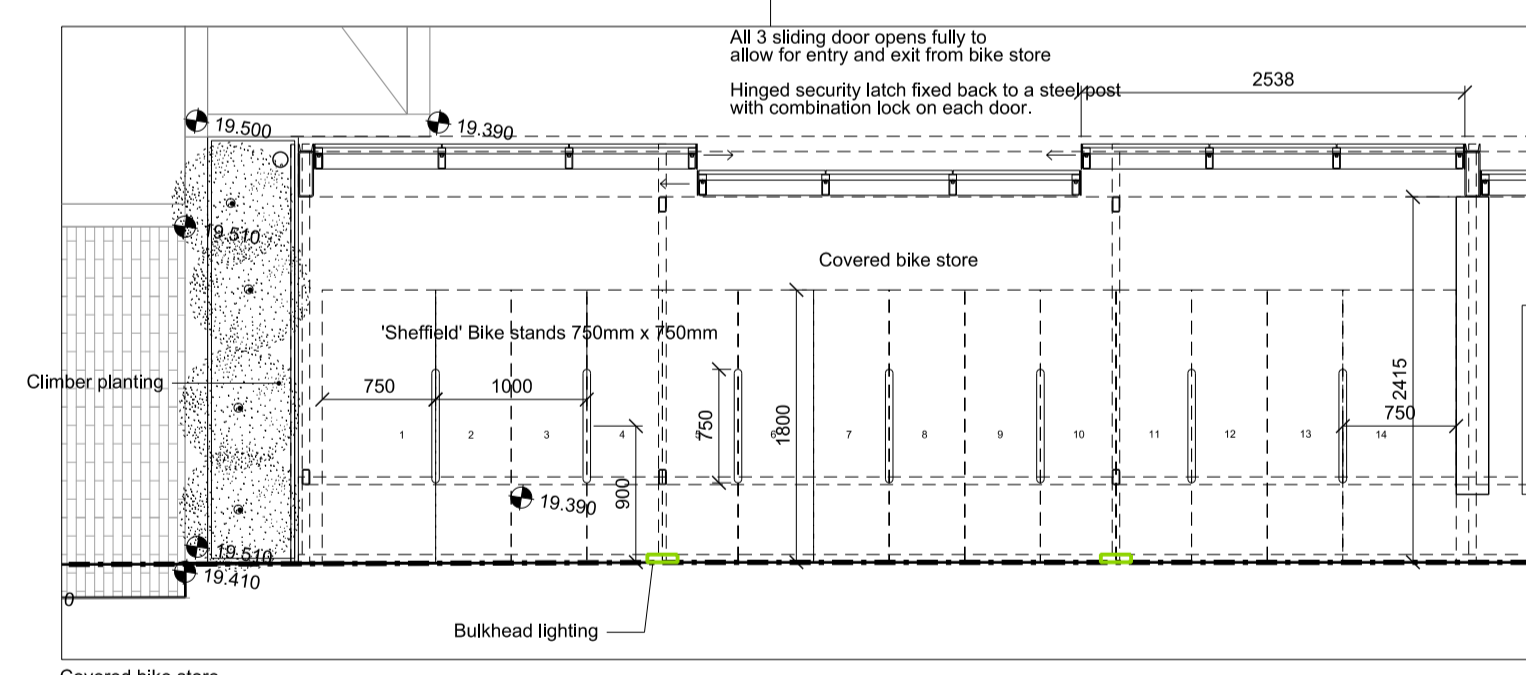
JOB
THE HONOURABLE SOCIETY OF GRAY'S INN
19-21 HIGH HOLBORN

TITLE
PROPOSED
LANDSCAPE PLAN

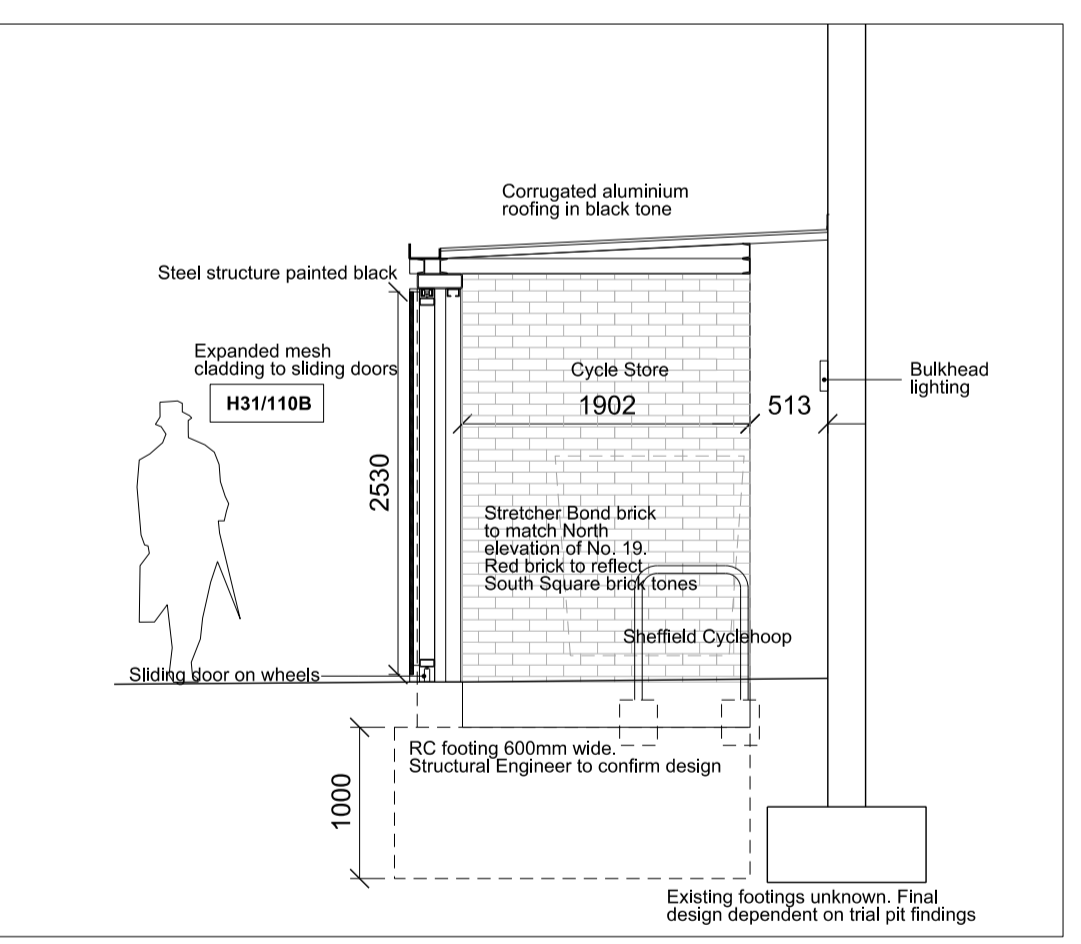
DRAWN	ME	JOB #	606	DRG #	17000B	REV	P1
CHECKED	TP	SCALE@A1	1:100	SIZE	A1	DATE	JAN 18
		SCALE@A3	1:200	SIZE	A3	REV DATE	04.01.17



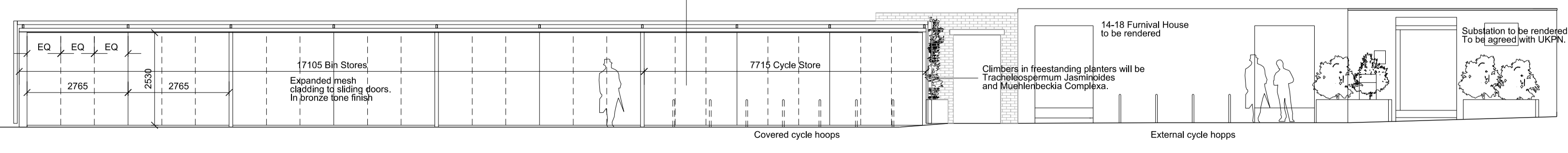
Cycle Stores Plan
04 606-17000B



Bin / Cycle Stores Section
03 606-17000B



Bin / Cycle Stores Section
03 606-17000B



Bin Stores Elevation 1:100
02 606-17000B

Ground Floor Landscape Plan
01 606-17000B