



MSA Supporting information

Latchways® Fall Protection Design

Fall Restraint, Fall Arrest and the Hierarchy of Fall Protection

The terms 'fall restraint' and 'fall arrest' are now considered commonly used terms with regards to Fall Protection. However, it is crucial to understand where and why a system should be specified.

Hierarchy of Fall Protection

It is generally accepted by governing bodies that the hierarchy of fall protection should provide the starting point for considering what type of fall protection system is required.



Eliminate the risk



Guard the hazard



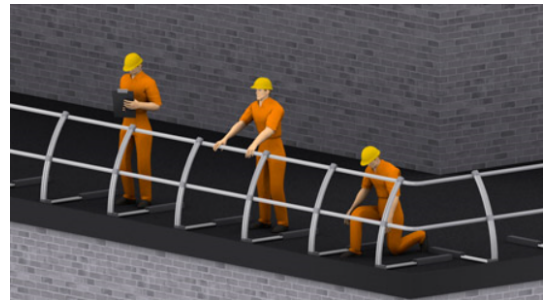
Protect the worker

1. Eliminate the risk

Avoid work at height where possible or locate plant and equipment in safe locations where there is no risk of a fall.

2. Guard the hazard

When working at height is essential, ensure that workers are not exposed to unnecessary risks, consider providing a parapet or guardrail (such as *VersiRail*) to eliminate the fall hazard.



3. Protect the worker

Where it is not possible to eliminate the risk of falling, **use a suitable fall protection system to minimise the consequences of a fall.** This can be achieved with a fall arrest or fall restraint system—two completely different entities.

A fall restraint system prevents workers from reaching a hazard, while a fall arrest system allows workers to reach a hazard and then protects them if they should fall.

Fall Restraint

These systems allow a person access to conduct their duties but prevent them from reaching a point where a fall could occur.

Fall Restraint systems are generally suitable if the person needs to work at the edge of a hazard. For example, where there is a need to maintain gutters along the edge of a roof, or if there are other potential fall hazards such as a fragile roof, roof lights or air vents.

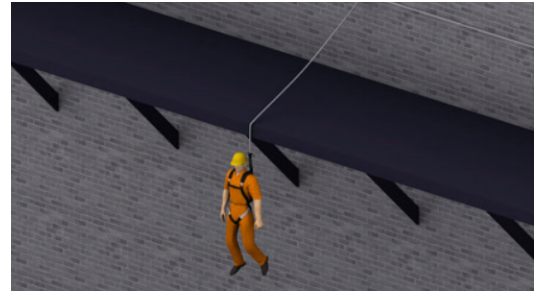


If fitting a fall restraint system, it is recommended that the system should be tested to fall arrest loads to ensure a person's safety in situations where the system may be misused (i.e. when the person using it wears an over-length lanyard to enable access to the edge of a roof).

Restraint systems are generally positioned more than 2 m from the hazard. This is because common practice is for the worker to be connected to the system by a fixed length 1.5 m lanyard.

Fall Arrest

A fall arrest system provides maximum freedom of movement for workers to conduct their duties. In doing so it allows them to reach the point where a fall could occur, such as the edge of a roof for gutter maintenance. However, in the event of a fall, the fall will be arrested and so allow the person to either effect a self-rescue or be rescued.



Rescue

Following a fall, consideration must be given to the rescue of the worker – in fact, there is a legal obligation to have a full and comprehensive rescue plan in place when individuals are working at height. There are several methods available for rescue including the *Latchways Personal Rescue Device (PRD)*.

3rd January 2017

Statement of Design Liability

Latchways, an MSA brand, offer a free of charge design service to specifiers to encourage best practice design of Latchways systems, ensuring compliance with current standards and legislations at design stage.

If the design and product selection is followed by all duty holders, the design will be covered by MSA's Professional Indemnity Insurance.

All designs issued by MSA are done so with reasonable skill and care. MSA are not responsible for elements of the design delegated to other consultants, the contractor or specialist sub-contractors and suppliers, where these parties contract direct with the client. However, MSA will be responsible where there is a delegation of the design function to the designers own sub-consultant or sub-contractor.

The designs provided by MSA for Latchways systems are created based on the information supplied by the client, principle designer or principle contractor. MSA are not responsible if incorrect project information and drawings are supplied or if changes in design occur following issue of design from MSA.

For and on behalf of Latchways, an MSA brand,
Sarah Ormston



Sales Support Manager

Tel: +44 1380 732700

E-mail: sarah.ormston@latchways.com

Given the range of applications, MSA's Latchways products may be exposed to a variety of environmental conditions, which may include exposure to both naturally occurring and industrial factors including exposure to wind, pollution, UV exposure and other potentially corrosive conditions.

Therefore, service life for Latchways' products can only be defined as generally expected service life and will be subject to a number of factors such as usage (or misuse), adherence to the *correct maintenance procedure and intervals, **equipment type and type of loading.

** Where the local conditions are suspected to be potentially aggressive, it may be necessary to conduct an on-site examination prior to installation to determine the nature of the environment. Depending on the nature of the environment the frequency of the inspection/maintenance may need to be increased and/or life expectancy reduced. For example, in an industrial environment where chlorides or sulphates are present the inspection regime may need to be increased and/or the life expectancy of stainless steel cable systems may be limited to as little as 2-5 years depending on the nature of the surrounding environment.*

*** MSA Latchways WalkSafe systems are only required to be capable of supporting foot traffic whereas fall arrest systems may be required to sustain loads resulting from a fall event, Single Point Anchors generally have no moving parts whereas MSA Latchways SRL's have complex internal mechanisms needing to remain fully functional over many hundreds of thousands of operations.*

THE GENERALLY EXPECTED SERVICE LIFE for MSA LATCHWAYS EQUIPMENT IS AS FOLLOWS:

- MSA Latchways Horizontal and Vertical Engineered Lifeline systems; up to 20 years in an inland environment, up to 15 years in a marine environment.
- MSA Latchways Horizontal Mobile Anchor devices (Transfastener type devices); up to 10 years.
- MSA Latchways Vertical Guided Type Fall Arrest devices (GTFAs) except TowerLatch and TowerLatch SP devices; up to 10 years.
- TowerLatch and TowerLatch SP devices; Up to 10 years device. The webbing element up to 10 years from April 2015 and up to 5 years for webbing pre-dating April 2015.
- D-Ring & HD D-Ring 85030 & 85016-00; up to 20 years in an inland environment, up to 15 years in a marine environment.
- MSA Latchways Standard SRLs and MSA Latchways PFLs; up to 10 years (non-marine environment). Webbing product shall be removed from service 10 years from the date of manufacture.
- MSA Latchways Sealed SRLs; up to 5 years (marine environment)

- MSA Latchways PRDs; Backpack and descent mechanism up to 10 years (non-marine environment). Harness up to 10 years from first use depending on frequency of use. Can be stored for up to 2 years.
- MSA Latchways VersiRail; up to 20 years under normal exposure conditions.
- MSA Latchways WalkSafe; up to 25 years under normal exposure conditions.
- MSA Latchways WinGrip; Energy absorbing lanyards up to 10 years from Aug 2011, following which the product shall be removed from service. Energy absorbing lanyards purchased prior to Aug 2011 have a 5 year life span.
- MSA Latchways WinGrip; Work positioning ropes up to 10 years, from Jan 2015, following which the product shall be removed from service. Ropes purchased prior to Jan 2015 have a 5 year life span.
- MSA Latchways WinGrip, Harness up to 10 years from first use, following which the product shall be removed from service. Can be stored for up to 2 years

Revision notes			
Date	Rev	CR No.	Comments
09-11-16	7	100050	Clarify lifespan details for WinGrip textile user equipment
14/11/16	8	100066	Product name change to include MSA Latchways

This information is provided for guidance purposes only and does not constitute a guarantee or warranty. Please refer to the relevant conditions of sale for details of the product warranty.

Product Lifespan./issueNo.8./CCR No; 100066

The following table is for guidance only and is not inclusive of full instructions. Users should always refer to supplied user instructions and follow instructions for pre-use checks and ensure that where periodic certification is required that this has been carried out by a person with the appropriate training and references.

Confirmation of Latchways Registered installers and trained personnel is available upon request.

Product Category	
Constant Force Post	Visual Inspection/Pre-Use: Always inspect the Energy Absorber, Tenser Disk, Transfastner, signs of corrosion, service date and deployment of the system.
	Certification Interval: Every 12 months by a Latchways Registered Installer.
WalkSafe	Visual Inspection/Pre-Use: Ensure that the system is in the required/design position.
	Certification Interval: No Mandatory inspection. Latchways advise keeping a good & regular housekeeping regime. Remove any debris and organic growth.
VersiRail	Visual Inspection/Pre-Use: Ensure that the system is upright and remains in the installed position.
	Certification Interval: No Mandatory inspection. Latchways advise keeping a good & regular housekeeping regime. Remove any debris and organic growth.
Horizontal Systems	Visual Inspection/Pre-Use: Always inspect the Energy Absorber, Tenser Disk, Transfastner, signs of corrosion, service date and deployment of the system.
	Certification Interval: Every 12 months by a Latchways Registered Installer.
Overhead Systems	Visual Inspection/Pre-Use: Ensure that system has not been altered and tampered with and that there are no signs of corrosion or wear.
	Certification Interval: Every 12 months by a Latchways Registered Installer.
Vertical Systems	Visual Inspection/Pre-Use: Always inspect the Energy Absorber, Tenser Disk, Device, signs of corrosion, service date and deployment of the system.
	Certification Interval: Every 12 months by a Latchways Registered Installer.
PushLock	Visual Inspection/Pre-Use: Always fully inspect for signs of corrosion & defect of the product and area the product is installed. Ensure sufficient clearance and correct PPE
	Certification Interval: Every 12 months by a Latchways Registered Installer.
PRD	Visual Inspection/Pre-Use: Inspect descent line, legibility of product markings, ensure release cord guide is undamaged, inspect the harness and all system components.
	Certification Interval: Every 12 months by a competent person.
Sealed SRL	Visual Inspection/Pre-Use: Full visual check, pull test and ensure product is within service dates.
	Certification Interval: Every 12 months by a Latchways Trained Person or returned to Latchways to carry out.

Retrieval SRL	Visual Inspection/Pre-Use: Full visual check, pull test and ensure product is within service dates.
	Certification Interval: Every 12 months by a Latchways Trained Person or returned to Latchways to carry out.
Standard SRL	Visual Inspection/Pre-Use: Full visual check, pull test and ensure product is within service dates.
	Certification Interval: Every 12 months by a Latchways Trained Person or returned to Latchways to carry out.
PFL	Visual Inspection/Pre-Use: Full visual check, pull test and ensure product is within the defined product lifespan.
	Certification Interval: 12 monthly periodic inspection by competent person.
WinGrip	Visual Inspection/Pre-Use: Ensure that the seal is cleaned as per instructions and complete a full visual check to ensure no damage or signs of corrosion.
	Certification Interval: Every 12 months by a Latchways Trained Person or returned to Latchways to carry out.

For more information on MSA Latchways product ranges please view the Latchways website – www.latchways.com

Alternatively, you can view the complete MSA Latchways product catalogue by clicking on the following link http://www.latchways.com/sites/default/files/46-500.2_Latchways-Catalogue_Rev00_GB-Ir.pdf

Should any additional information be required, this can be gained by contacting Latchways, an MSA brand;

E-mail: info@latchways.com

Tel: +44 1380 732700



Latchways, an MSA Brand,
Hopton Park, Devizes,
Wiltshire SN10 2JP, UK
Phone: +44 (0)1380 732700
Fax: +44 (0)1380 732701
info@latchways.com
www.latchways.com

Our Ref: JMS/IPESC/03012017
3rd January 2017

To whom it may concern

Installation, periodic examination, servicing, repair and certification of MSA Latchways® products.

We have pleasure in confirming the following;

In accordance with EN 365:2004 (E), with particular reference to sections 4.4.d and 4.5 contained therein, only Latchways Registered Installers are authorised by MSA to undertake, installation, periodic examination, servicing, repair and certification of Latchways products.

Only Latchways Registered Installers will have received the necessary training, have access to full technical support and original parts should replacement become necessary.

The use of unauthorised parts and/or changes to the installation will adversely affect the product/system functionality and, therefore, invalidate certification.

In respect of extended guarantees / warranties, the use of a non-Registered Latchways Installer will invalidate any such agreements.

Where a customer instructs any remedial works to be undertaken by a third party, not registered with MSA, they do so at their own risk.

Your sincerely,

A handwritten signature in black ink, appearing to read 'James Sainsbury', written in a cursive style.

James Sainsbury
Fall Protection Sales Leader - UK

Latchways Registered Installers (A-Z) Correct as of 16/01/2017
(National account unless otherwise stated)

England	
<p>A&M Defence and Marine Services Ltd 3 Old Barn Woolsbridge Industrial Estate Three Legged Cross Wimbourne Dorset BH21 6SP</p> <p>Contact: Gavin Kerby T: 01202 828700 E: sales@am-dmservices.co.uk</p>	<p>A2M Safety Ltd Stone Bow Farm Eastertown, Lympsham Weston Super Mare North Somerset BS24 0HT</p> <p>Contact: Jeremy Kinsman T: 01934 751123 E: jeremy.kinsman@a2msafety.co.uk</p>
<p>Access Testing Ltd Unit 34 Jessops Riverside 800 Brightside Lane Sheffield S9 2RX</p> <p>Contact Nick Hayes T: 0114 256 1197 E: Info@Access-testing.com</p>	<p>Atrium Gantrys Maintenance Ltd Lakeside Park Neptune Close Medway City Estate Rochester ME2 4LT</p> <p>Contact: Chelsea Whitehead T: 01634 711200 E: maintenance@atriumgantrys.co.uk</p>
<p>Avalon Abseiling Ltd Avalon House 45 Talon Road Hutton Brentwood Essex CM13 1TG</p> <p>Contact: Steven Nash T: 01277 500100 E: steven@avalonpro.co.uk</p>	<p>Cento Engineering Company Ltd 6 Baddow Park West Hanningfield Road Great Baddow Chelmsford CM2 7SY</p> <p>Contact: Lee Green T: 01245 477708 E: greenl@cento.co.uk</p>

<p>Eiger Safety Installations PO Box 429 Esher KT10 1BD</p> <p>Contact: Paul Jaffe T: 0870 7777 010 E: paul.jaffe@eiger-safety.co.uk</p>	<p>Eurosafe Solutions Limited Unit G, Centenary Works Little London Road Sheffield S8 0UJ</p> <p>Contact: Dan Capper/Rhiannon Taylor/Tom Duffy T: 0870 777 6940 E: dcapper@eurosafesolutions.com E: rtaylor@eurosafesolutions.com E: tduffy@eurosafesolutions.com</p>
<p>Eye Pro Ltd Oak Farm Cottage Canterbury Road Challock Kent TN25 4DW</p> <p>T: 0845 460 8833 E: info@weyepro.tv</p>	<p>Gable Fall Safe Limited 17-19 Station Road Hayling Island Hampshire PO11 0EA</p> <p>Contact: Neil Wilson T: 02392 466 416 E: neil.wilson@gable.co.uk</p>
<p>Gravity Solutions Limited Unit 2, The Old Fire Station Abbey Road Barrow-in-Furness Cumbria LA14 1XH</p> <p>T: 01229 837120 E: enquiries@gravitysolutions.co.uk</p>	<p>HCL Safety Limited 11 The Wharf Bridge Street Birmingham B1 2JR</p> <p>T: 0845 600 0086 Email: hcl.esteeming@hclsafety.com</p>
<p>Highwire Limited Ground Floor, Riverside House Hadfield Road Dukinfield SK16 4QX</p> <p>Contact: Megan Waine T: 0161 612 7633 E: enquiries@highwire.info</p>	<p>Keysecure Safety Equipment Limited Wedge House 12 Lister Street Nuneaton Warwickshire CV11 4NX</p> <p>Contact: Lee Michie & Paul Scoffham T: 02476 374 888 E: lee.michie@kseltd.co.uk E: Paul.scoffham@kseltd.co.uk E: admin@kseltd.co.uk</p>

<p>Mantech Unit 1&2 Norman Hall Farm Pott Shrigley Macclesfield, Cheshire SK10 5SE</p> <p>Contact: Steve Meakin & Penny Meakin T: 01625 560 920</p>	<p>Omega Red Group Ltd Dabell Avenue Nottingham NG6 8WA</p> <p>Contact: Michelle Bryan T: 0115 877 6666 E: mbryan@omegaredgroup.com</p>
<p>Pinnacle Safety Solutions Pinnacle House Unit 1 Beaconside Newark on Trent Nottingham NG24 2JJ</p> <p>Contact: Lisa Barker T: 01636 707619 E: lisa@pinnaclesafetygroup.co.uk</p>	<p>Pressford Services Ltd Unit 8 Space Business Centre Knights Road Strood Kent ME2 2BF</p> <p>Contact: Katie Broomhall T: 01634 292 081 E: katie@pressfordservices.com E: info@pressfordservices.com</p>
<p>PTSG Access and Safety Ltd- South The Grove North Street South Ockendon, Essex RM15 6SS</p> <p>Contact: Wayne Meader/Wayne Adams T: 01977 668771 E: waynem@ptsg.co.uk E: waynea@ptsg.co.uk</p>	<p>PTSG Access and Safety Ltd- Midlands, West & Wales Unit 13 Flemming Court Whistler drive Glass Houghton, Castleford WF10 5HW</p> <p>Contact: Brian Whittaker T: 01977 668771 E: brianw@ptsg.co.uk</p>
<p>PTSG Access and Safety Ltd- North Unit 13 Flemming Court Whistler drive Glass Houghton, Castleford WF10 5HW</p> <p>Contact: Joe Darrington T: 01977 668771 E: joed@ptsg.co.uk</p>	<p>Redpath Buchanan Unit 2 Jenkins Dale Chatham ME4 5RD</p> <p>Contact: Simon Elliott T: 01634 828 454 E: sales@redpathbuchanan.co.uk</p>

<p>Rotrex OnSite Unit 9 Mudlands Industrial Estate Manor Way Rainham RM13 8RH</p> <p>Contact: Stephen Gomersall T: 01708 522 589 E: stephen.gomersell@rotrex.co.uk</p>	<p>Suspended Access Systems Limited Unit 2 Hilltop Meadows Old London Road Knockholt Sevenoaks TN14 7JW</p> <p>Contact: Martin Parfett & Colin Truman T: 0208 290 6381 E: admin@sasltd.uk.com</p>
<p>Terex MHPS Demag Cranes and Components Ltd Beaumont Road Banbury OX16 1QZ</p> <p>Contact: Gordon Baird T: 01295 676100 E: gordon.baird@terex.com</p>	<p>Total Access (UK) Unit 5 B/C Raleigh Hall Industrial Estate Eccleshall Stafford ST21 6JL</p> <p>Contact: Tim Lee T: 01785 850 333 E: sales@totalaccess.co.uk</p>

Scotland

HCL Safety Limited

11 The Wharf
 Bridge Street
 Birmingham
 B1 2JR

T: 0845 600 0086
 E: hcl.esteeming@hclsafety.com

Onestop Safety Systems

25 Birkmyre Road
 Govan
 Glasgow,
 G51 3JH

Contact: Lee Ryan
 T: 0141 445 6777
 E: lryan@weareonestop.com

PTSG Access and Safety Ltd- Scotland

Unit 17
 Evans Business Centre
 Easter Inch
 Bathgate, West Lothian
 EH48 2EH

Contact: Rikki McRorie
 T: 01506 657 312
 E: rikkim@ocssafety.co.uk

Ireland

Barton Industrial Services Ltd

Unit C1
 38 Heron Road
 Belfast
 BT3 9LE

Contact: Michael Chestnutt or Michael McClure
 T: +44 (0)28 90451 555
 E: michaelchestnutt@barton-industrial.com
 E: michaelmcclure@barton-industrial.com

Barton Industrial Services Ltd

Unit 2
 St Antony's Business Park
 Ballymont Road
 Dublin 22

Contact: Michael Chestnutt or Michael McClure
 T: +353 (0)166 17 590
 E: michaelchestnutt@barton-industrial.com
 E: michaelmcclure@barton-industrial.com