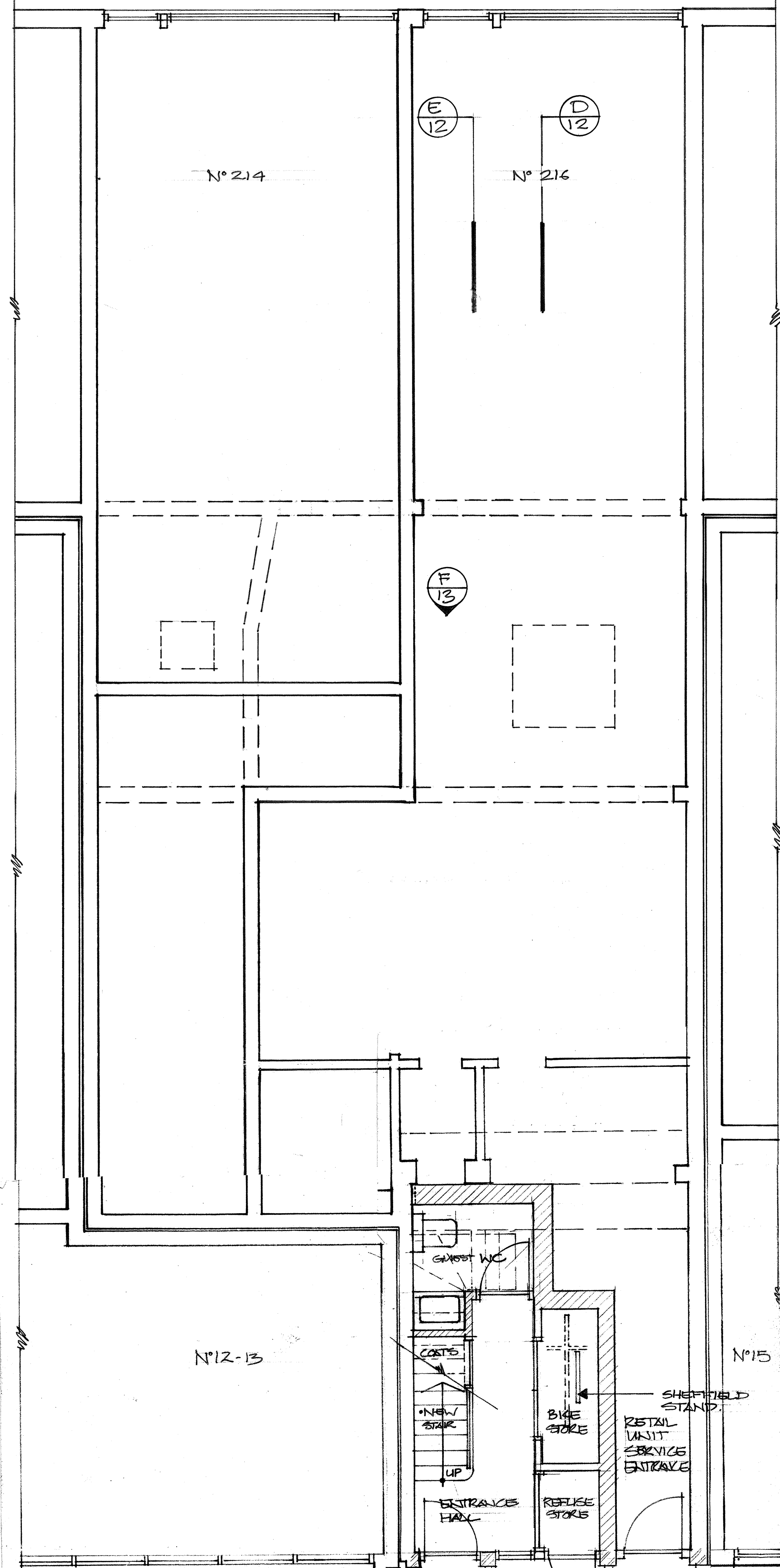
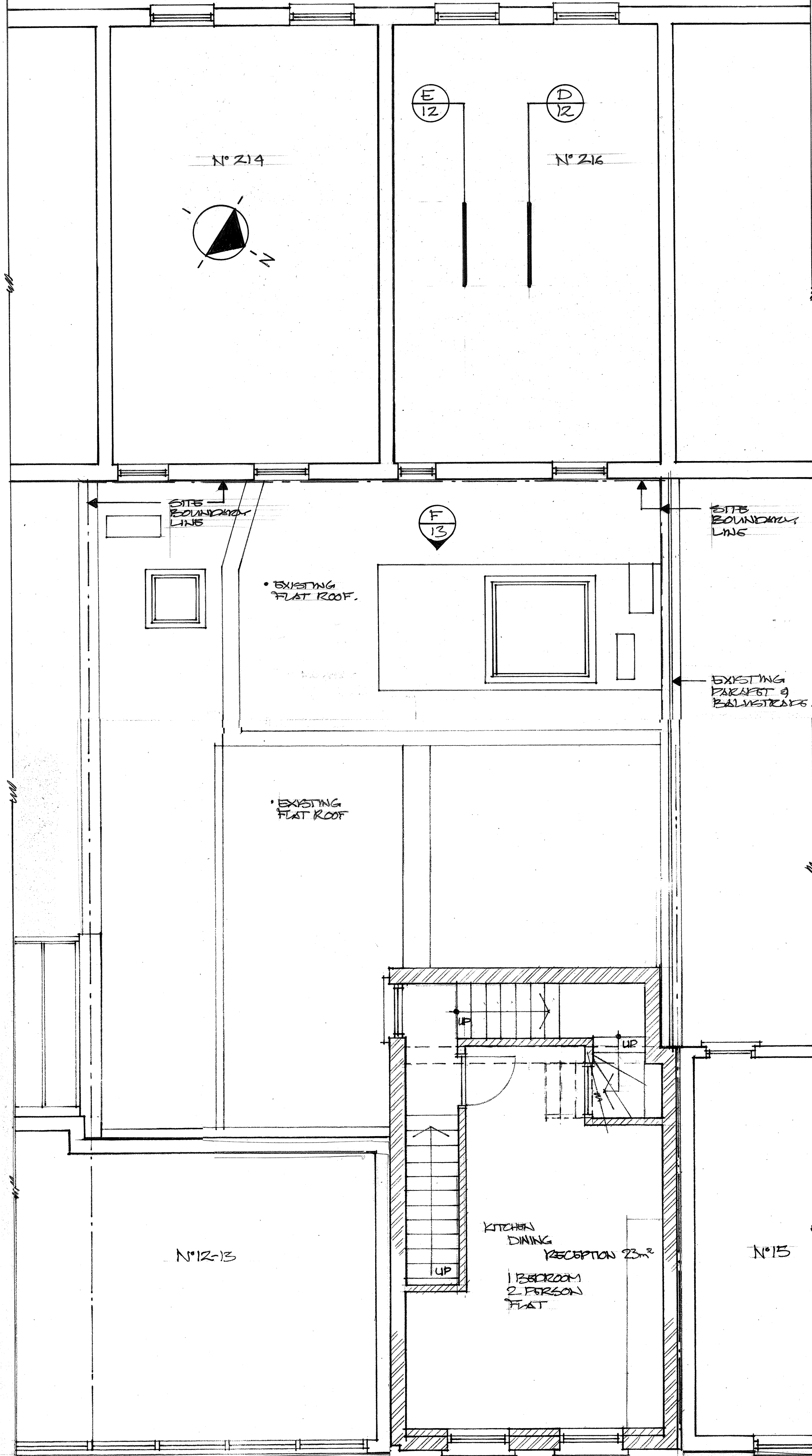


CAMDEN HIGH STREET
 N°212 N°214 N°216 N°218

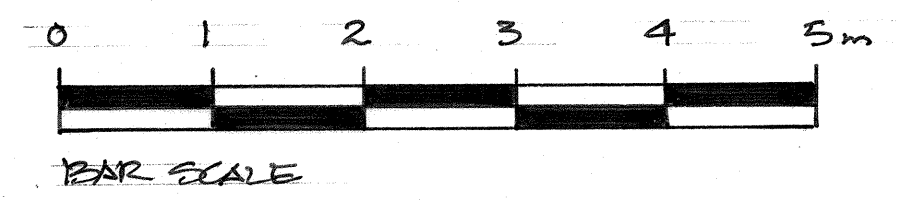


PROPOSED GROUND FLOOR PLAN

N°212 N°214 N°216 N°218



PROPOSED FIRST FLOOR PLAN



27/11/17 GENERAL REVISIONS C
 12/10/17 GENERAL REVISIONS B
 15-6-17 BIKE/BIN STORE ENLARGED A

DATE	REVISIONS	REV
27/11/17	GENERAL REVISIONS C	
12/10/17	GENERAL REVISIONS B	
15-6-17	BIKE/BIN STORE ENLARGED	A

THIS DRAWING IS THE COPYRIGHT OF THE ARCHITECT AND SHOULD NOT BE REPRODUCED WITHOUT WRITTEN CONSENT. DO NOT SCALE FROM THIS DRAWING. ONLY FIGURED DIMENSIONS SHOULD BE REFERRED TO. ANY DISCREPANCIES SHOULD BE REPORTED TO THE ARCHITECT IMMEDIATELY.

PROJECT
 19 STUCKLEY PLACE
 LONDON NW1 6NS

DRAWING
 PROPOSED GROUND AND FIRST FLOOR PLANS

DATE
 06/15

DELT.
 S/B

COMPUTER

SCALE
 1:50

DWG. No. 1000-0100

REV. No. C

transformation ARCHITECTS
 17 BONNY STREET LONDON NW1 9PC
 TEL: 020 7424 0122 FAX: 020 7424 0133
 e-mail: info@transformation-architects.co.uk