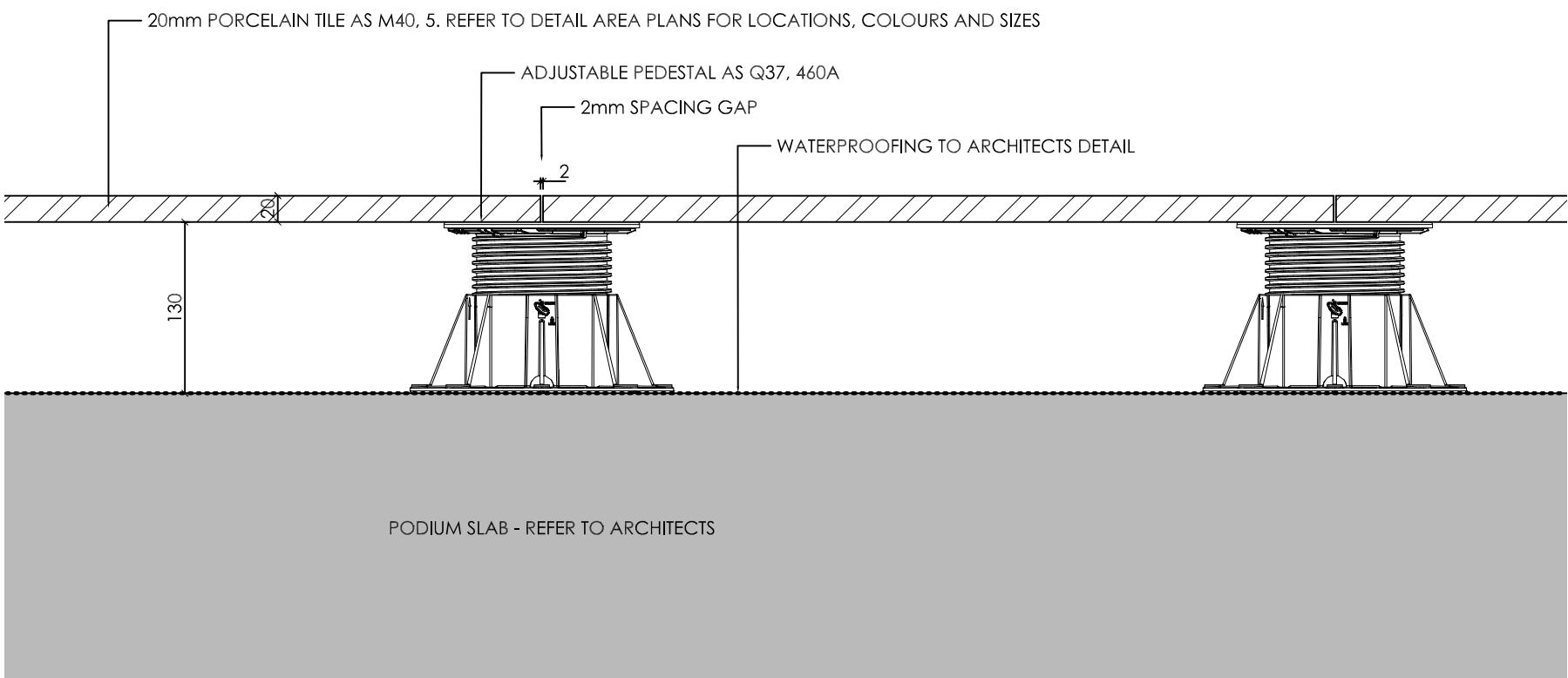


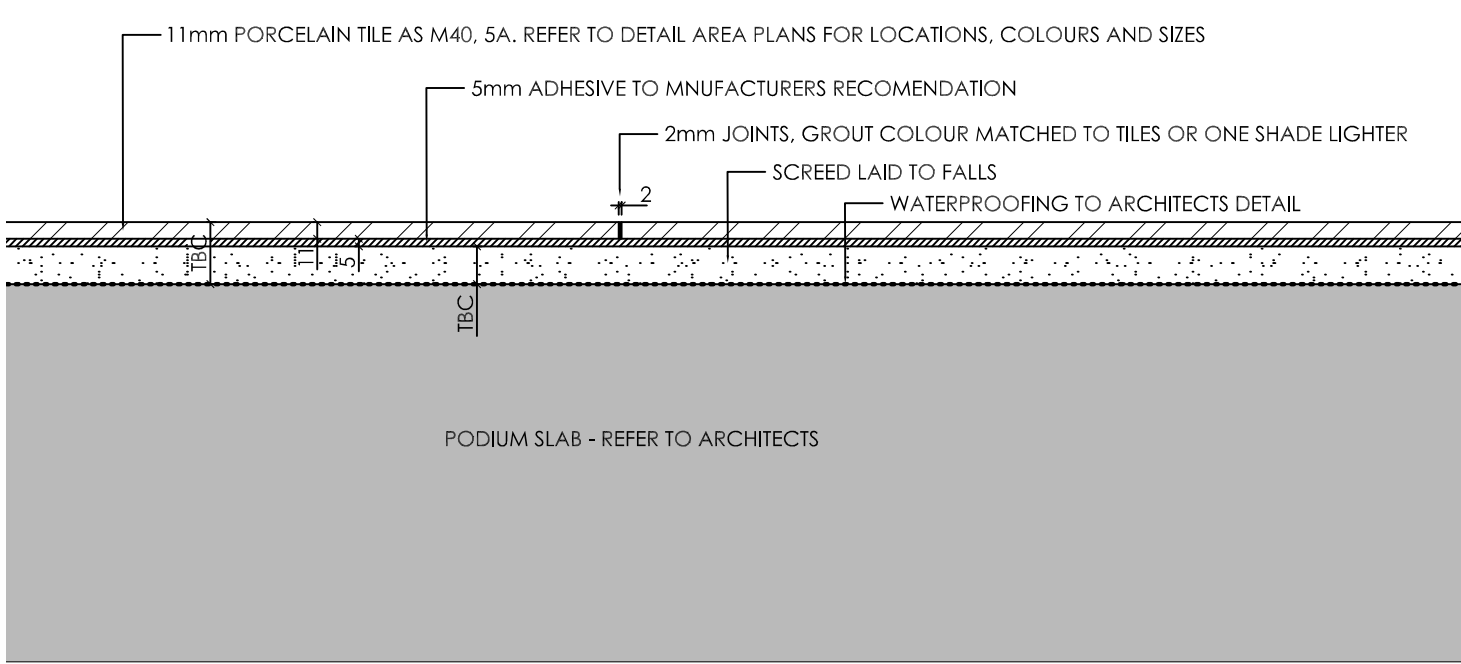
01 Porcelain tile on min 30mm pedestal - typical - scale 1:5@ A1
200 Parker House

NOTES:
ADJUSTABLE PEDESTALS REQUIRED FOR TERRACE FALLS.
FINAL SPECIFICATION OF PEDESTALS TO BE CONTRACTOR DESIGNED ON SITE.

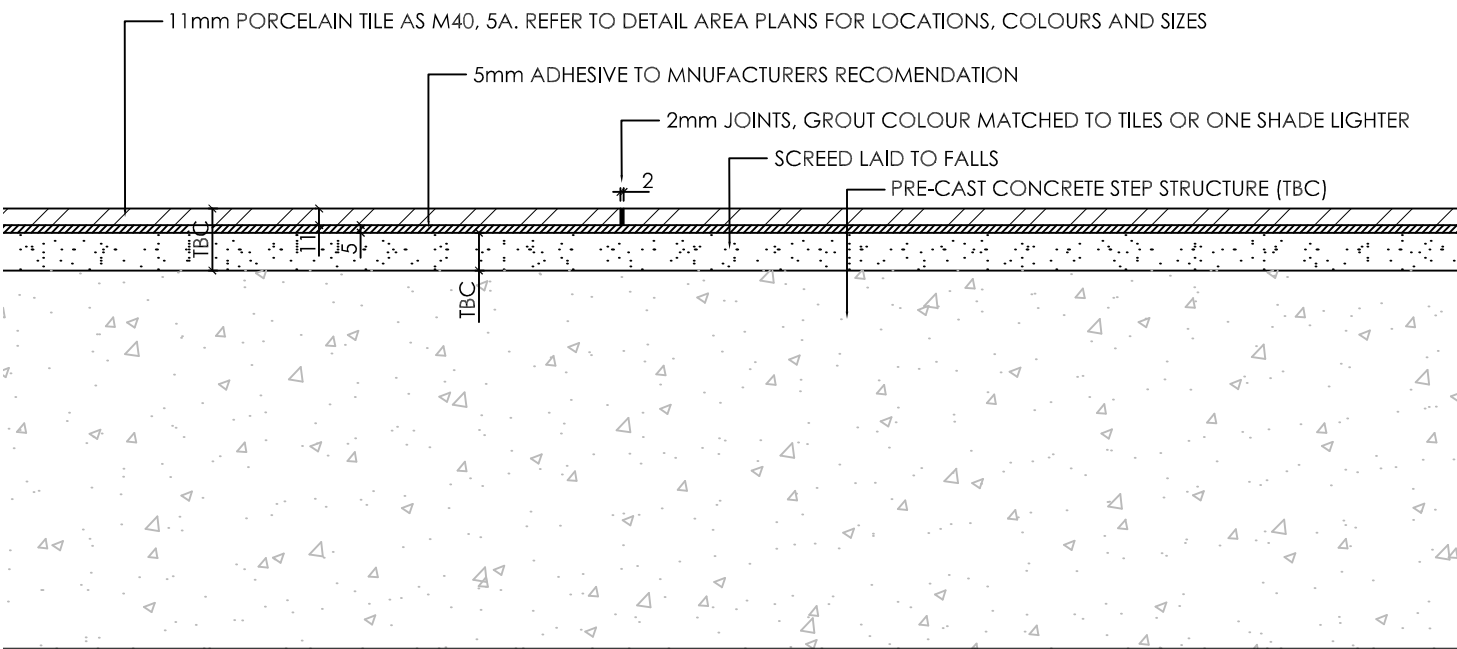


02 Porcelain tile on 130mm pedestal - typical - scale 1:5@ A1
200 Parker House

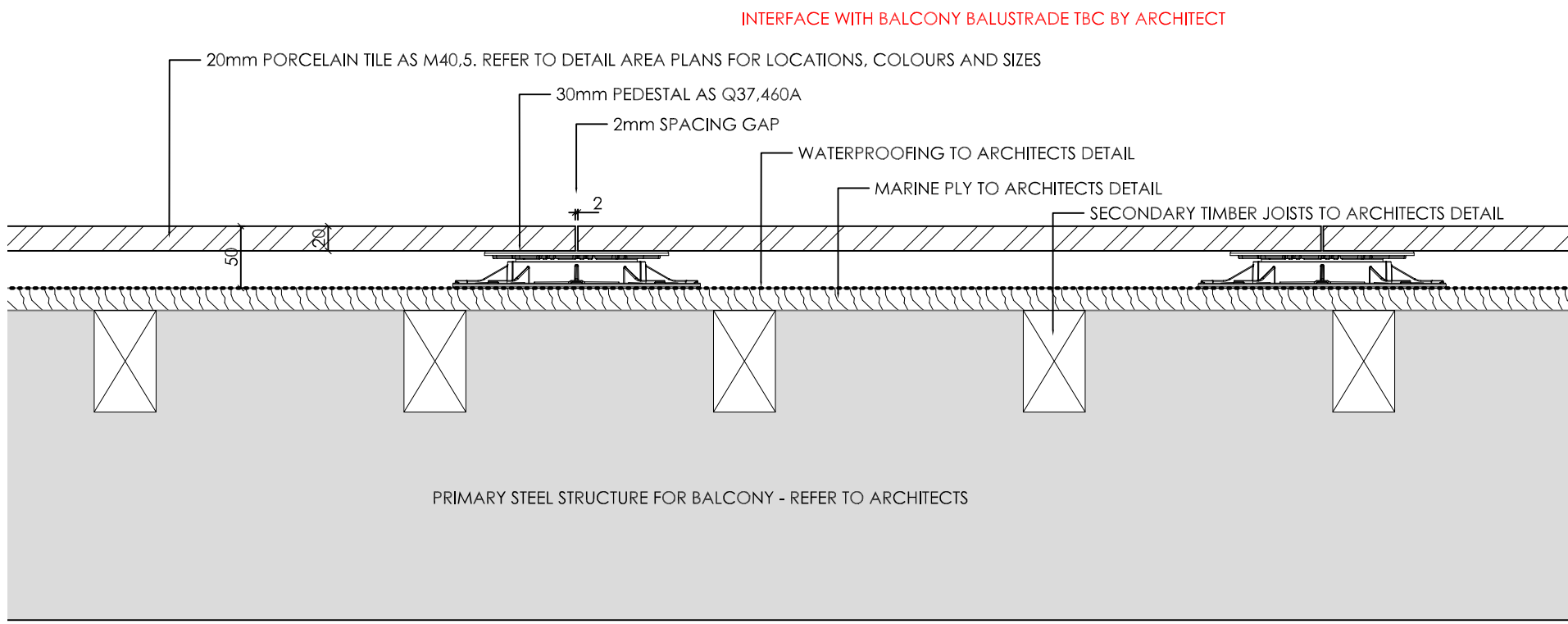
NOTES:
ADJUSTABLE PEDESTALS REQUIRED FOR TERRACE FALLS.
FINAL SPECIFICATION OF PEDESTALS TO BE CONTRACTOR DESIGNED ON SITE.



03 Porcelain tile on podium slab - typical - scale 1:5@ A1
200 Parker House



04 Porcelain tile on step structure - typical - scale 1:5@ A1
200 Parker House



05 Porcelain tile on balcony - typical - scale 1:5@ A1
200 Parker House

GENERAL NOTES:

This drawing remains the copyright of Andy Sturgeon Garden Design Limited.
All dimensions to be checked prior to commencement of any works,
and/or preparation of any shop drawings on site.
Any dimensional discrepancies and alterations to be referred to the designer.

DO NOT SCALE FROM THIS DRAWING.

NOTE:

Pedestal system to be contractor designed.

Product to be appropriately selected to fit tolerance of build up and any falls of the terrace.

P03	19.12.16	Second stage tender issue	AN	TT	AS
P02	25.11.16	Second issue	2P	TT	AS
P01	18.10.16	First issue	AN	TT	AS
Iss	Date	Issue notes	Drawn	Checked	Approved

andysturgeon

landscape and garden design

7 Marlborough Place, Brighton, East Sussex BN1 1UB

Tel: 01273 672575 info@andysturgeon.com www.andysturgeon.com

project no.	drawing no.	issue
510	-D-XX-200	P03
client	London Newcastle	
project	Parker House	
drawing	Paving details - general	
	Parker House	
	scale	1:5@ A1 1:10@ A3