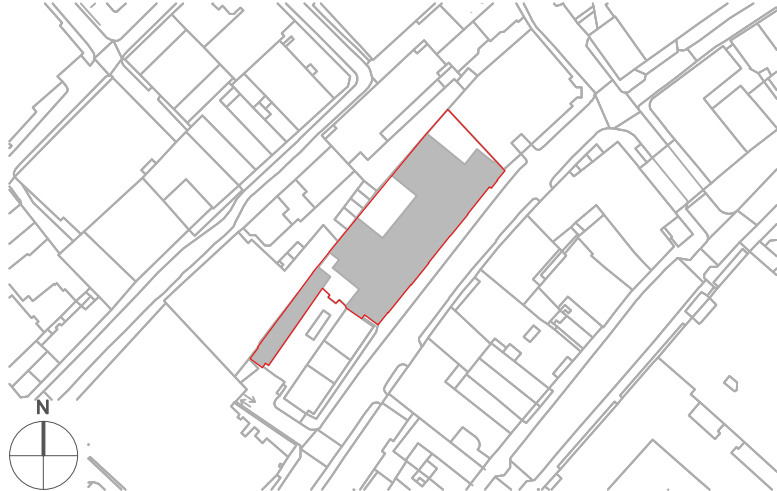


GENERAL NOTES.

This drawing remains the copyright of Andy Sturgeon Garden Design Limited.
All dimensions to be checked prior to commencement of any works,
and/or preparation of any shop drawings on site.
Any dimensional discrepancies and alterations to be referred to the designer.

DO NOT SCALE FROM THIS DRAWING.

Key / Location



Legend

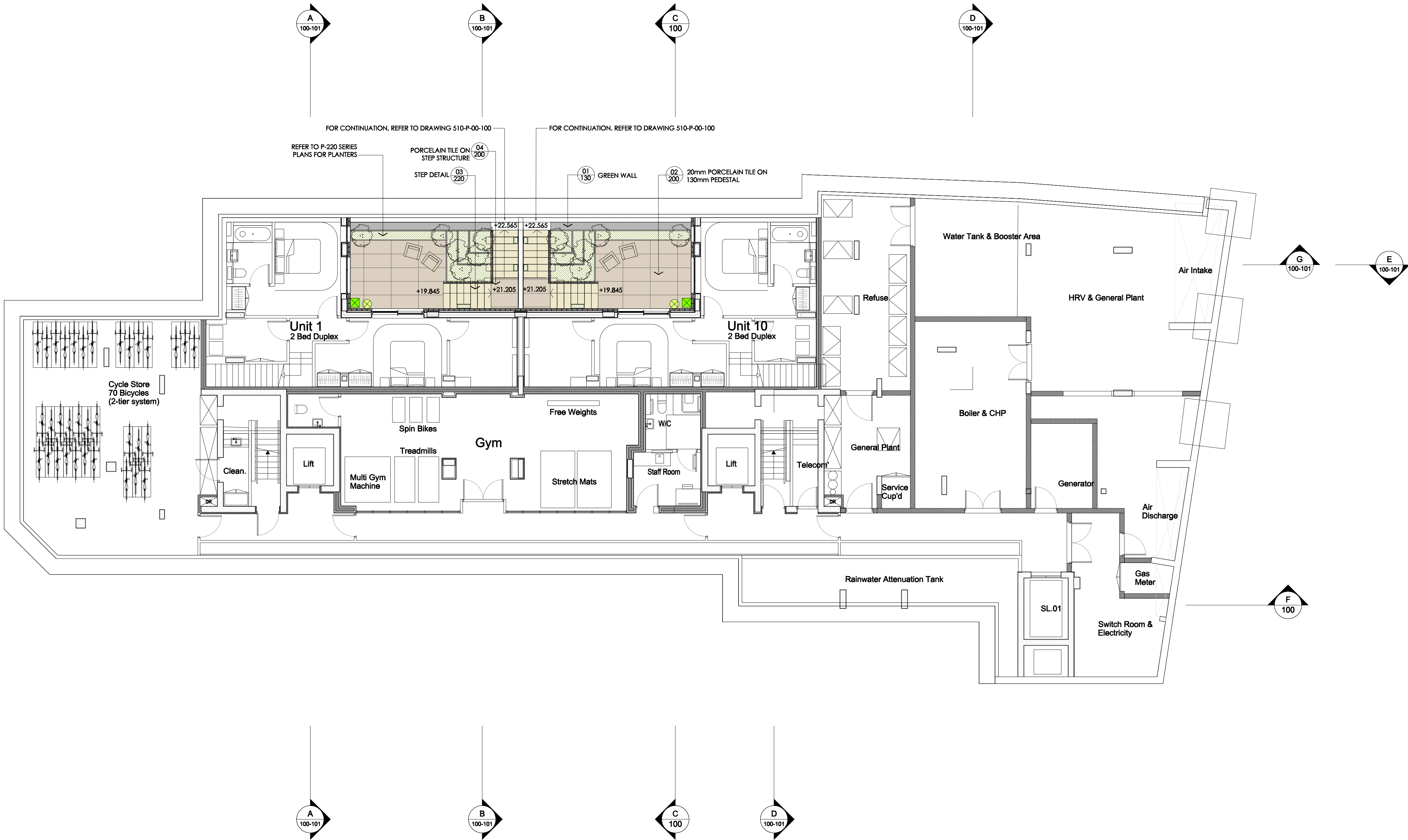
- Paving 1
Porcelain tile, refer to paving layouts for further details
- Planters
Steel, Variable heights, refer to planer plans & details
- Planting
- Proposed trees
- Furniture
Not part of tender
- Bespoke design living wall with 3D decorative stone panels
- Tap
See irrigation plans for further information

- Power Socket
2 gang, power socket
IP66 rated, RCD protected

- Steps between garden levels; solid stone stepper steps laid in staggered fashion with planting pockets and powdercoated steel handrail and balustrade. Support structure requires input from structural engineer

NOTE:
Electrical feed, transformers and cabling requirements to be contractor's designed and approved by electrical engineer. Recommend remote control system. Circuits switching points TBA

Please refer to Studio Fractal drawings for lighting layout and specification.



| | | | | | |
|-----|----------|---------------------------------|----|-------|-----|
| P03 | 19.12.16 | Second stage tender issue | JP | AN | AS |
| P02 | 25.11.16 | Second issue | JP | AN | AS |
| P01 | 12.10.16 | Second stage tender issue (VIP) | AN | TT | AS |
| Is | Date | Issue notes | By | App'd | Rev |

andysturgeon
landscape and garden design

20 Clermont Rd, Brighton, East Sussex BN1 6SG
Tel: 01273 553336 info@andysturgeon.com www.andysturgeon.com

| | | |
|--------------|-------------------------------|-------|
| project no. | drawing no. | issue |
| 510-P-B1-100 | | P03 |
| client | London Newcastle | |
| project | Parker House | |
| drawing | Landscape General Arrangement | |
| | Level B1 | |
| scale | 1:100@A1 1:200@A3 | |