

- KEY:
- HATCH INDICATES PROPOSED EXTENSIONS
  - HATCH INDICATES EXISTING STRUCTURE RETAINED

Extension to red block to be clad in brick to match existing. Extension to be stepped back to differentiate between existing and proposed

Existing roof finish and photovoltaics to be maintained

Existing stepped back zinc standing seam block to be reclad in brick piers, glazing and glazed brick panels to match lower block. Existing height of building to be maintained. Cladding to create a consistency between the upper and lower blocks

Existing Building Height

White precast concrete cills and window verticals to create depth to window openings. Light colour of precast elements to reference conservation area detailing

Facated glazed brick panels to replace existing laminated wood panels. Glazed bricks to create variation changes as viewed from different points around the building

Existing mesh cladding to be removed and replaced with back sprayed glazing. Glazing to be slim frame glazing with silicone joint only between panels



01 Proposed Section 1-1  
Scale 1 : 200 @ A3

0 2 4 6 8 10 M

FOR PLANNING APPLICATION

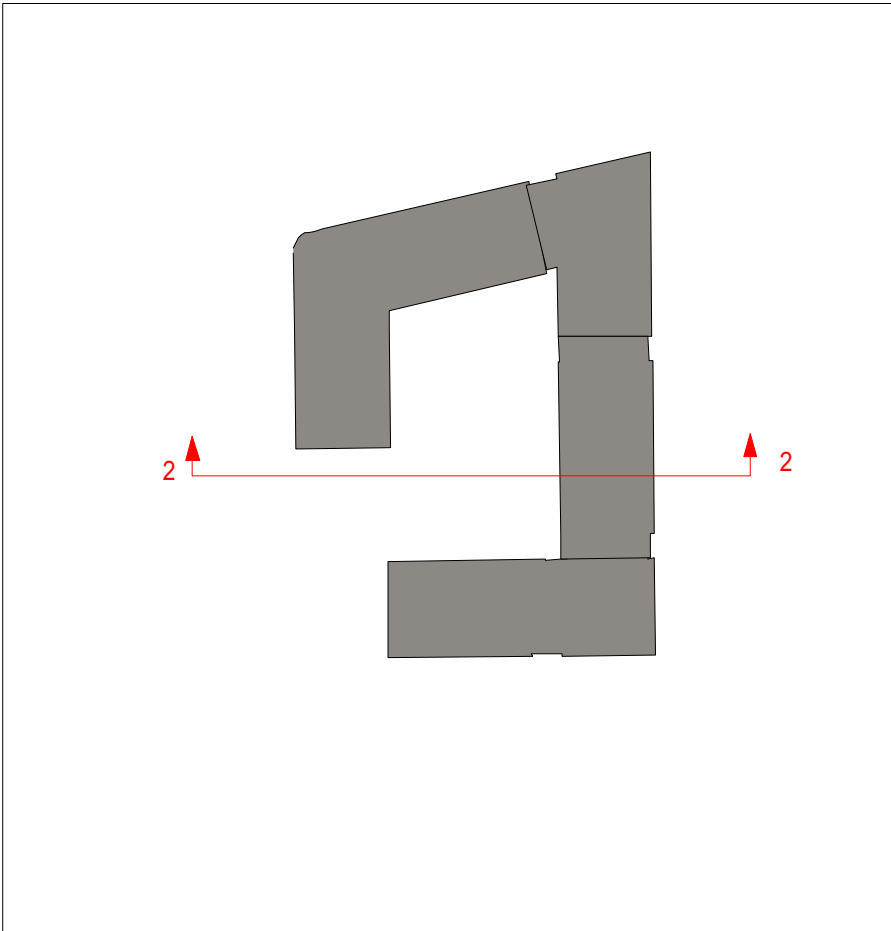
Rev	Date	Description	By	Chkd	App	THE COPYRIGHT DESIGN AND PATENTS ACT 1988 THIS DRAWING IS THE COPYRIGHT OF TIGG COLL ARCHITECTS LTD AND MUST NOT BE COPIED OR REPRODUCED IN WHOLE OR PART, BY ANY METHOD WHATSOEVER, WITHOUT THE PRIOR WRITTEN APPROVAL OF TIGG COLL ARCHITECTS LTD
-	20.12.17	Issue for Planning Application	JB	DT	DT	
						ALL SETTING OUT MUST BE CHECKED ONSITE
						ALL LEVELS MUST BE CHECKED ONSITE
						ALL DIMENSIONS MUST BE CHECKED ONSITE
						DO NOT SCALE FROM THIS DRAWING
						THIS DRAWING MUST NOT BE USED ONSITE UNLESS ISSUED FOR CONSTRUCTION

TIGG+COLL ARCHITECTS

UNIT L17, THE OLD LABORATORIES  
THE OLD GAS WORKS, 2 MICHAEL ROAD  
LONDON, SW6 2AD

E:INFO@TIGGCOLLARCHITECTS.COM  
T: 020 3170 6125  
TIGGCOLLARCHITECTS.COM

Project		NIDO West Hampstead	
Title			
Proposed Section 1-1			
Date	Scale [A3] 1:200 Scale [A1] 1:100	Drawing no.	Rev.
17.02.16		190(2) - PL 300	-



- KEY:
- HATCH INDICATES PROPOSED EXTENSIONS
  - HATCH INDICATES EXISTING STRUCTURE RETAINED

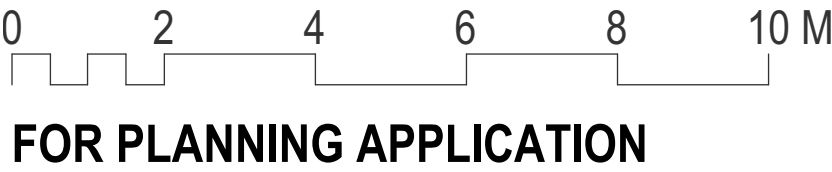
Existing stepped back single storey zinc standing seam block to be reclad in brick piers, glazing and glazed brick panels to match lower block, with single storey extension above. Reclad block and new extension to match extension to left and reclad block to right

Existing hardstanding and photovoltaics to be reinstated on new roof extension

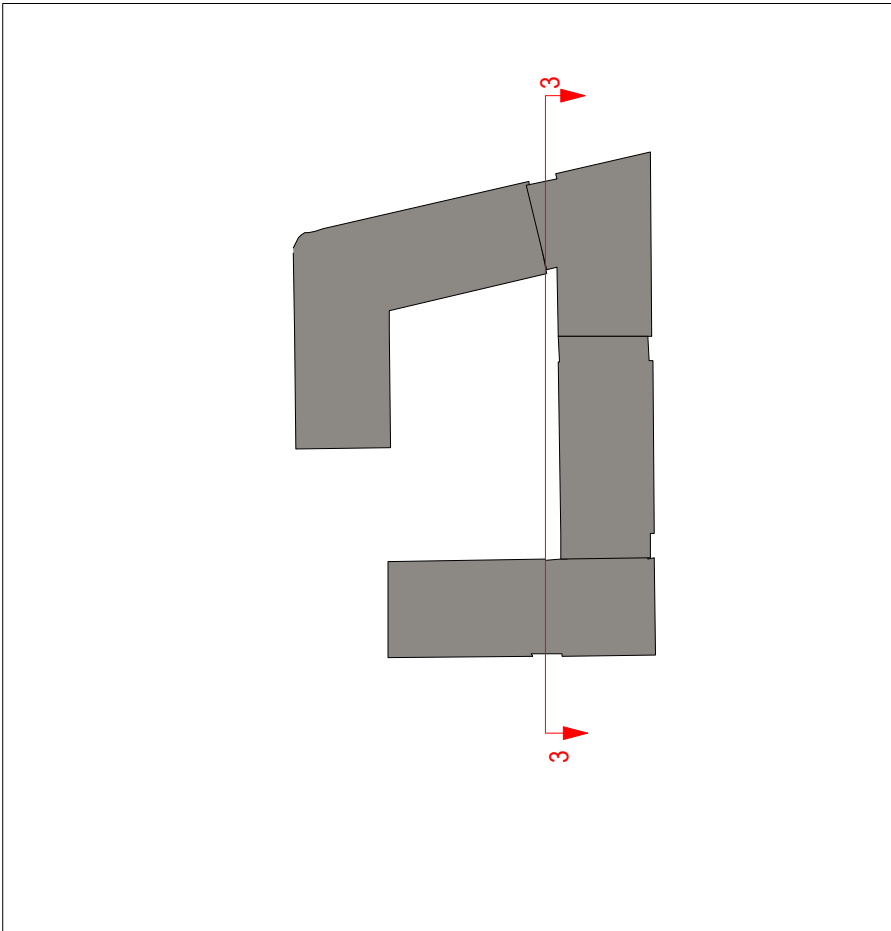
White precast concrete cills and window verticals to create depth to window openings. Light colour of precast elements to reference conservation area detailing

Facated glazed brick panels to replace existing laminated wood panels. Glazed bricks to create variation changes as viewed from different points around the building

1 Proposed Section 2-2  
Scale 1 : 200 @ A3



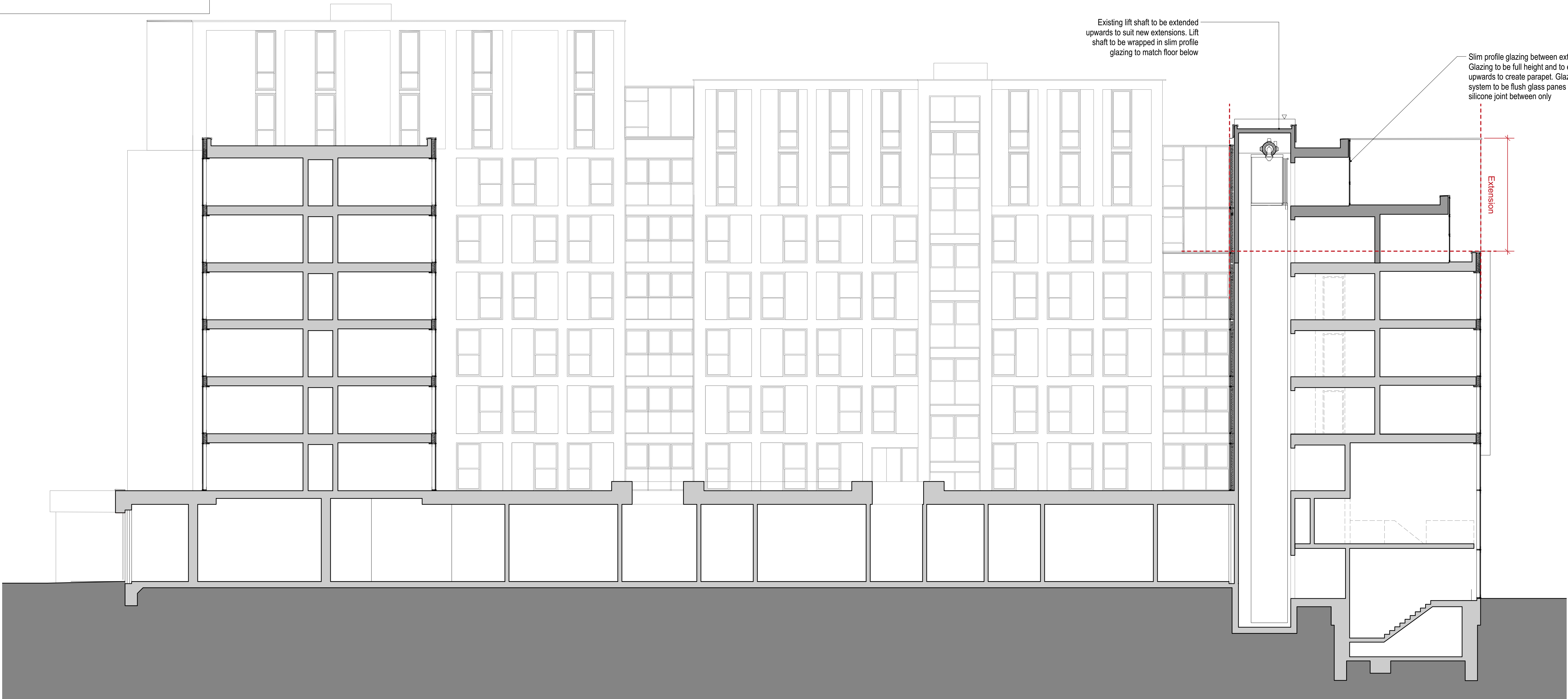
Rev	Date	Description	By	Chkd	App	THE COPYRIGHT DESIGN AND PATENTS ACT 1988 THIS DRAWING IS THE COPYRIGHT OF TIGG COLL ARCHITECTS LTD AND MUST NOT BE COPIED OR REPRODUCED IN WHOLE OR PART, BY ANY METHOD WHATSOEVER, WITHOUT THE PRIOR WRITTEN APPROVAL OF TIGG COLL ARCHITECTS LTD	TIGG+COLL ARCHITECTS  UNIT L17, THE OLD LABORATORIES THE OLD GAS WORKS, 2 MICHAEL ROAD LONDON, SW6 2AD  E:INFO@TIGGCOLLARCHITECTS.COM T: 020 3170 6125 TIGGCOLLARCHITECTS.COM	Project			
-	20.12.17	Issue for Planning Application	JB	DT	DT			NIDO West Hampstead			
								Title			
								Proposed Section 2-2			
								Date	Scale [A3] 1:200 Scale [A1] 1:100	Drawing no.	Rev.
								17.02.16		190(2) - PL 301	-



KEY:

HATCH INDICATES PROPOSED EXTENSIONS

HATCH INDICATES EXISTING STRUCTURE RETAINED



Existing lift shaft to be extended upwards to suit new extensions. Lift shaft to be wrapped in slim profile glazing to match floor below

Slim profile glazing between extensions. Glazing to be full height and to extend upwards to create parapet. Glazing system to be flush glass panes with silicone joint between only

Extension

1 Proposed Section 3-3  
Scale 1 : 200 @ A3



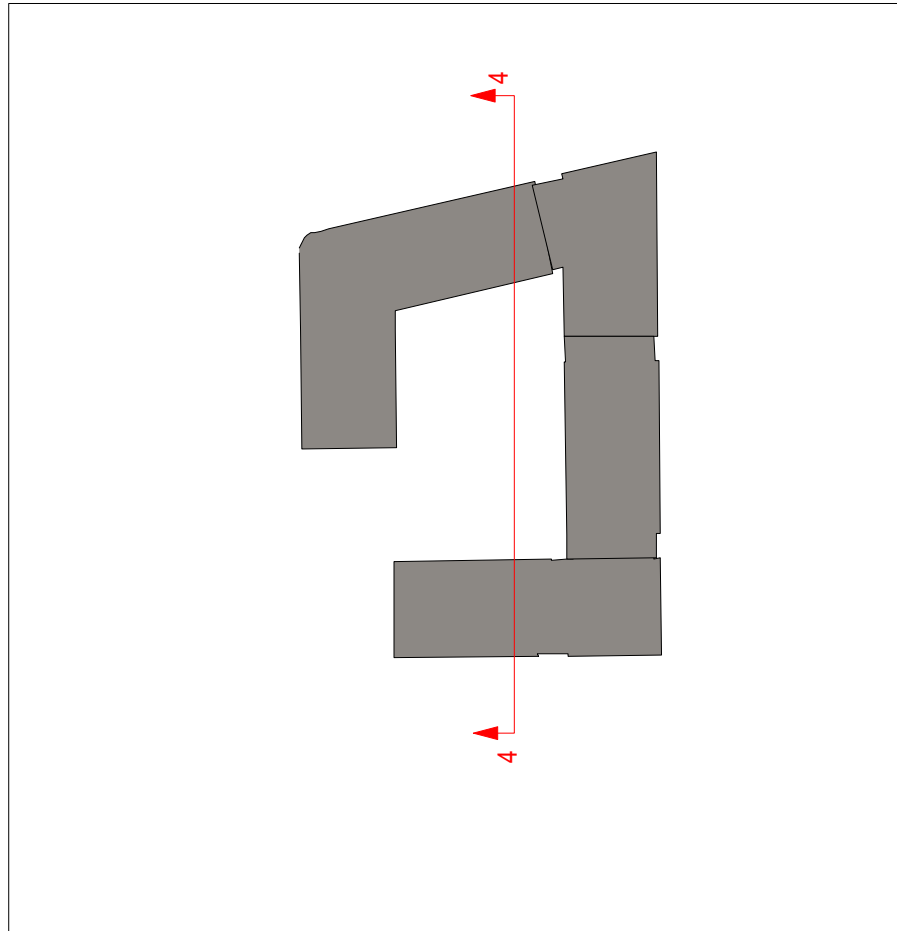
FOR PLANNING APPLICATION

Rev	Date	Description	By	Chkd	App	THE COPYRIGHT DESIGN AND PATENTS ACT 1988 THIS DRAWING IS THE COPYRIGHT OF TIGG COLL ARCHITECTS LTD AND MUSTNOT BE COPIED OR REPRODUCED IN WHOLE OR PART, BY ANY METHOD WHATSOEVER, WITHOUT THE PRIOR WRITTEN APPROVAL OF TIGG COLL ARCHITECTS LTD
-	20.12.17	Issue for Planning Application	JB	DT	DT	
						ALL SETTING OUT MUST BE CHECKED ONSITE
						ALL LEVELS MUST BE CHECKED ONSITE
						ALL DIMENSIONS MUST BE CHECKED ONSITE
						DO NOT SCALE FROM THIS DRAWING
						THIS DRAWING MUST NOT BE USED ONSITE UNLESS ISSUED FOR CONSTRUCTION

TIGG+COLL ARCHITECTS

UNIT L17, THE OLD LABORATORIES  
THE OLD GAS WORKS, 2 MICHAEL ROAD  
LONDON, SW6 2AD  
E:INFO@TIGGCOLLARCHITECTS.COM  
T: 020 3170 6125  
TIGGCOLLARCHITECTS.COM

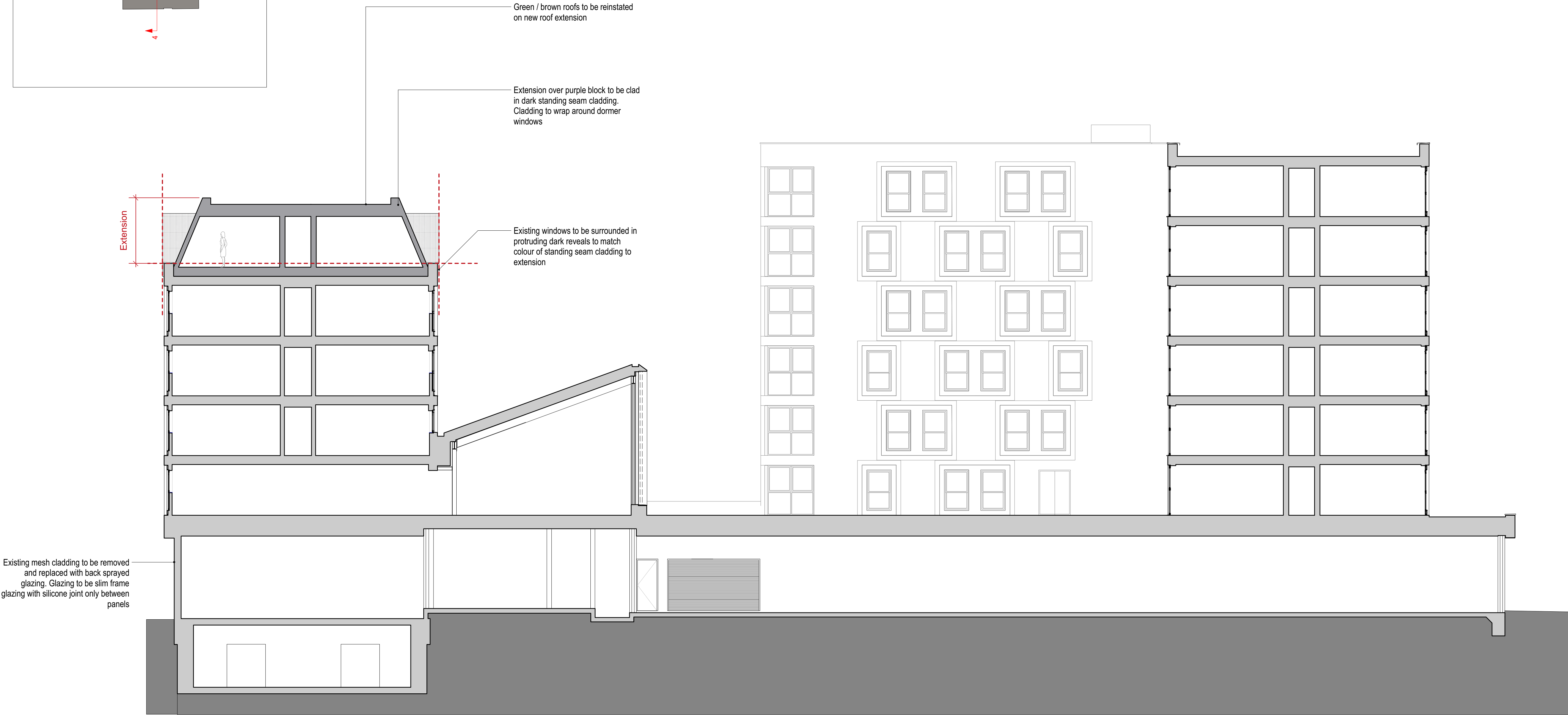
Project		NIDO West Hampstead	
Title		Proposed Section 3-3	
Date	Scale [A3] 1:200 Scale [A1] 1:100	Drawing no.	Rev.
17.02.16		190(2) - PL 302	-



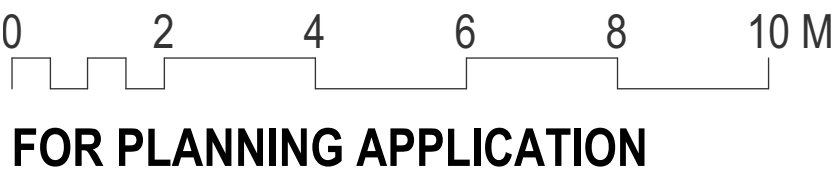
KEY:

HATCH INDICATES PROPOSED EXTENSIONS

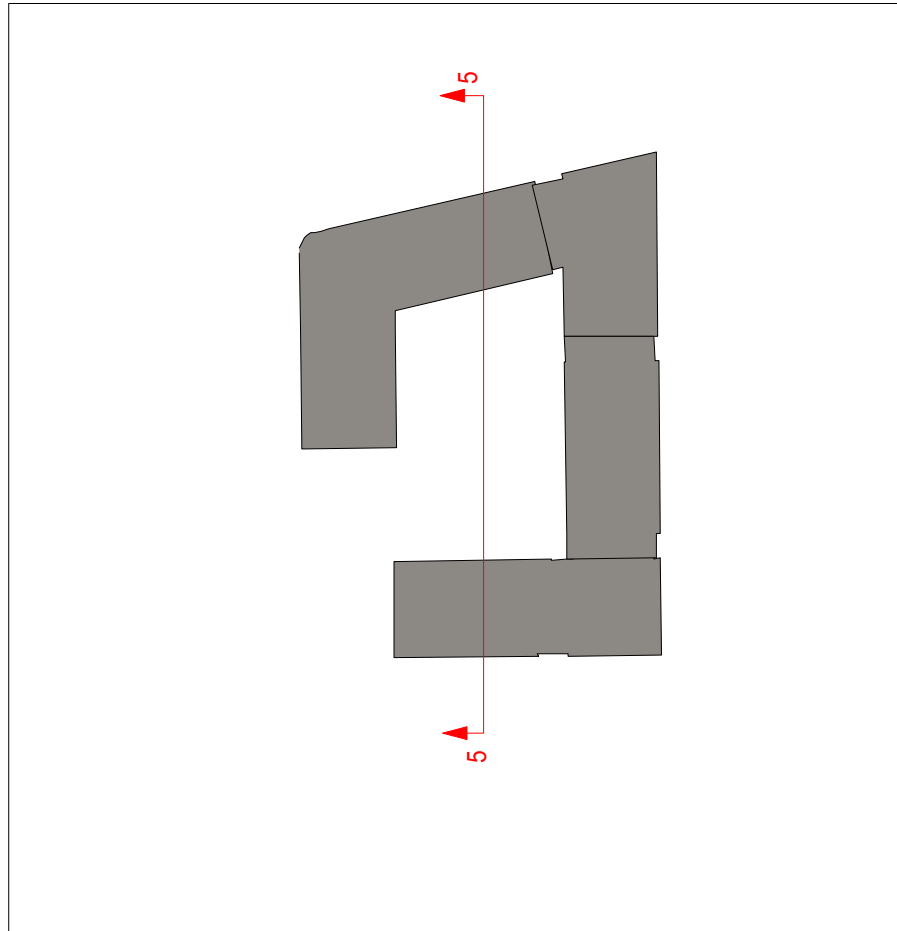
HATCH INDICATES EXISTING STRUCTURE RETAINED



1 Proposed Section 4-4  
Scale 1 : 200 @ A3



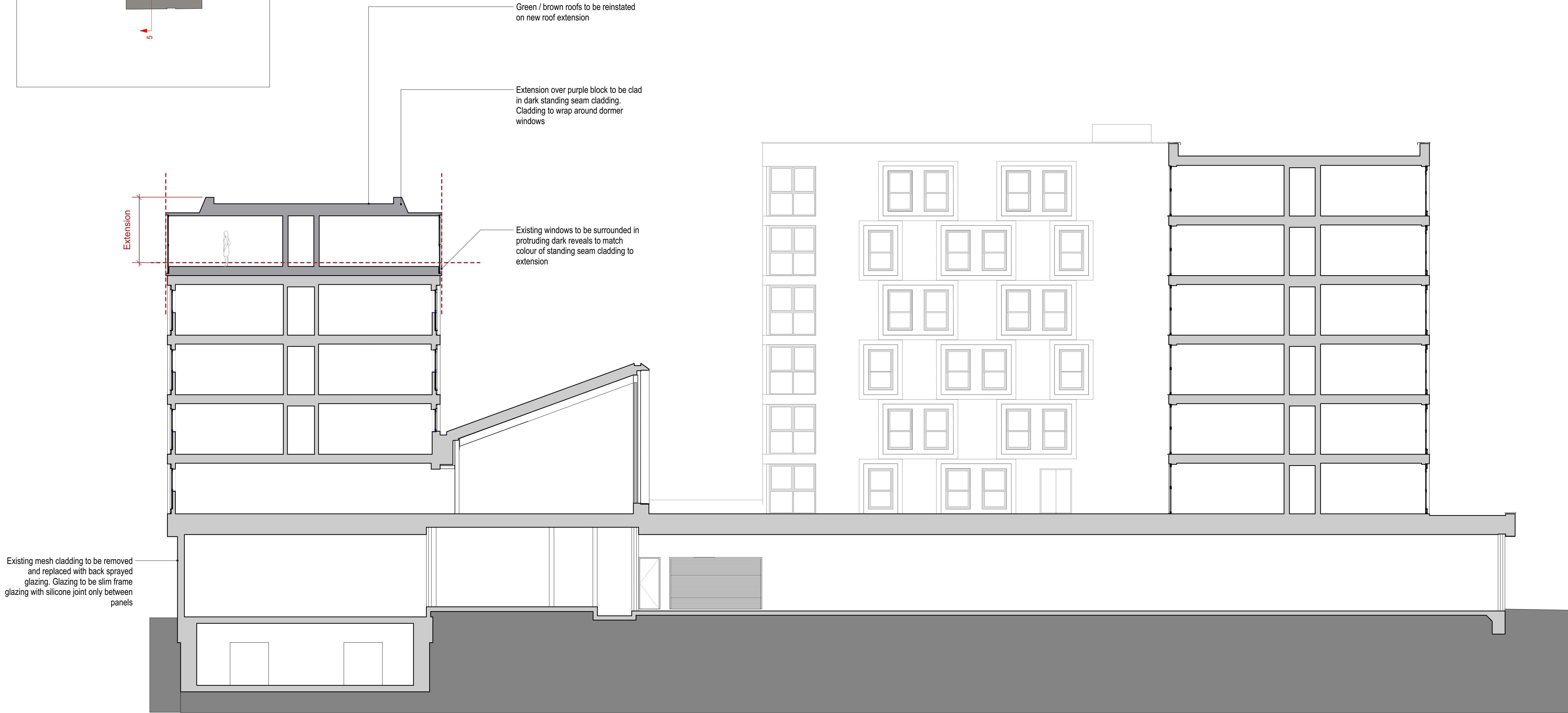
Rev	Date	Description	By	Chkd	App	<div>THE COPYRIGHT DESIGN AND PATENTS ACT 1988 THIS DRAWING IS THIS COPYRIGHT OF TIGG COLL ARCHITECTS LTD AND MUST NOT BE COPIED OR REPRODUCED IN WHOLE OR PART, BY ANY METHOD WHATSOEVER, WITHOUT THE PRIOR WRITTEN APPROVAL OF TIGG COLL ARCHITECTS LTD</div> <div>ALL SETTING OUT MUST BE CHECKED ONSITE</div> <div>ALL LEVELS MUST BE CHECKED ONSITE</div> <div>ALL DIMENSIONS MUST BE CHECKED ONSITE</div> <div>DO NOT SCALE FROM THIS DRAWING</div> <div>THIS DRAWING MUST NOT BE USED ONSITE UNLESS ISSUED FOR CONSTRUCTION</div>	<div>TIGG+COLL ARCHITECTS</div> <div>UNIT L17, THE OLD LABORATORIES</div> <div>THE OLD GAS WORKS, 2 MICHAEL ROAD</div> <div>LONDON, SW6 2AD</div> <div>E:INFO@TIGGCOLLARCHITECTS.COM</div> <div>T: 020 3170 6125</div> <div>TIGGCOLLARCHITECTS.COM</div>	Project			Title		Date	Scale [A3] 1:200	Drawing no.	Rev.
-	20.12.17	Issue for Planning Application	JB	DT	DT			NIDO West Hampstead			Proposed Section 4-4		17.02.16	Scale [A1] 1:100	190(2) - PL 303	-



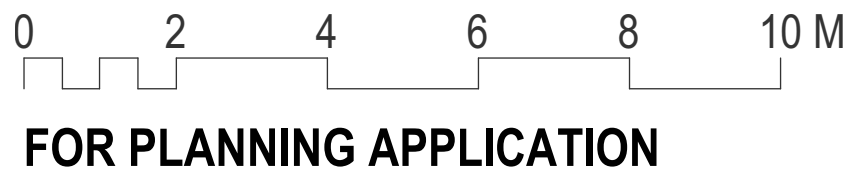
KEY:

HATCH INDICATES PROPOSED EXTENSIONS

HATCH INDICATES EXISTING STRUCTURE RETAINED



1 Proposed Section 5-5  
Scale 1 : 200 @ A3



Rev	Date	Description	By	Chkd	App	<div>THE COPYRIGHT DESIGN AND PATENTS ACT 1988 THIS DRAWING IS THIS COPYRIGHT OF TIGG COLL ARCHITECTS LTD AND MUST NOT BE COPIED OR REPRODUCED IN WHOLE OR PART, BY ANY METHOD WHATSOEVER, WITHOUT THE PRIOR WRITTEN APPROVAL OF TIGG COLL ARCHITECTS LTD</div> <div>ALL SETTING OUT MUST BE CHECKED ONSITE</div> <div>ALL LEVELS MUST BE CHECKED ONSITE</div> <div>ALL DIMENSIONS MUST BE CHECKED ONSITE</div> <div>DO NOT SCALE FROM THIS DRAWING</div> <div>THIS DRAWING MUST NOT BE USED ONSITE UNLESS ISSUED FOR CONSTRUCTION</div>	<div>TIGG+COLL ARCHITECTS</div> <div>UNIT L17, THE OLD LABORATORIES</div> <div>THE OLD GAS WORKS, 2 MICHAEL ROAD</div> <div>LONDON, SW6 2AD</div> <div>E:INFO@TIGGCOLLARCHITECTS.COM</div> <div>T: 020 3170 6125</div> <div>TIGGCOLLARCHITECTS.COM</div>	Project NIDO West Hampstead		
-	20.12.17	Issue for Planning Application	JB	DT	DT			Title Proposed Section 5-5		
								Date	Scale [A3] 1:200	Drawing no. 190(2) - PL 304
								17.02.16	Scale [A1] 1:100	
										Rev. -