

Hard Landscape Material Proposals

Job Description:
Lyndhurst Gardens

Client:
VABEL

Project Ref:	ALD639	Current Issue Date:	14th July 2017
Document Ref:	RP903	Original Issue Date:	19th May 2017
Document Revision:	02	Reason for Issue:	STAGE 4

Contents

Contents

Introduction 2

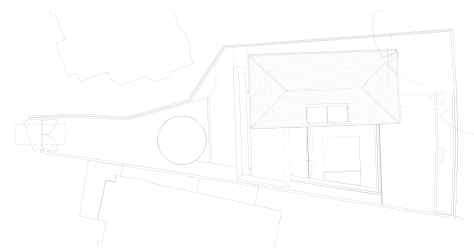
Materials Sample Board..... 3

Hard Landscape Materials..... 4

Lighting Proposals..... 9

Introduction

The following document has been developed to explore hard landscape finishes and materials within the Lyndhurst Gardens Landscape



Materials Sample Board

MATERIAL SAMPLES

Adjacent and below is a small selection of alternative paving materials suitable for Lyndhurst gardens driveway and courtyard spaces. Please refer to the next page for further information and sizes.

1. London Stone: Hard Buff
- ~~2. London Stone: Grey Yorkstone~~
3. CED: Buff Sandstone
4. CED: Grey Sandstone
5. Johnsons Wellfield: Crossland Hill shot sawn
6. Johnsons Wellfield: Crossland Hill Diamond sawn
- ~~7. Hardscape: Forest Penant (Sawn)~~
- ~~8. Stone UK: Fairfield Yorkstone Setts~~
- ~~9. Vande Moortel: Clay pavers - Pearl Grey~~
- ~~10. Vande Moortel: Clay Pavers - Olive~~
11. Evans Concrete: BLSM185 Acid etch
12. Bea: Old Henley Red (as specified by Vabel)



Brick sample above for comparison only and as specified by Vabel

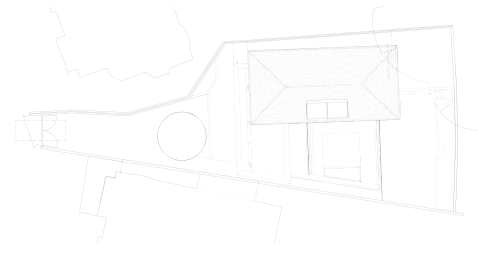
Note:

Samples best viewed in persons, colours may vary due to photo.

UPDATE:

Client email received 24.05.2017 showed preference against grey units as struck through above





Hard Landscape Materials

MATERIAL TYPE A: Driveway Setts

Design Intent

Small scale units, minimum 50mm depth for vehicular loading



Proposed Material Options



3

Material: Buff / Grey sandstone setts

Manufacturer: CED

Dimensions: 100mm wide x 100 / 200mm long x 50mm deep



8

Material: Fairfield Yorkstone Setts, tumbled

Manufacturer: Stone UK

Dimensions: 100 / 150mm wide x random lengths x 75mm deep



6

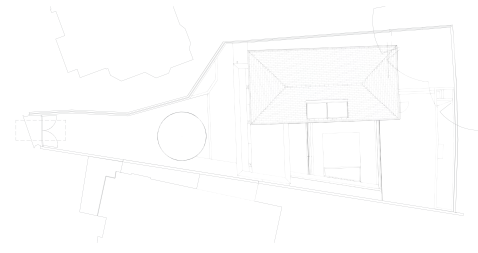


5

Material: Crosland Hill Yorkstone (Diamond sawn / Shot sawn)

Manufacturer: Johnson Wellfield

Dimensions: dimensions available on request



Hard Landscape Materials

MATERIAL TYPE B: Steps

Design Intent

B1: Driveway Steps



To match building facade

B2: Back Garden Steps



Solid Granite Steps - clean and crisp design detailing, integrated lighting possible, visual contrast with adjacent paving recommended - preferred option

Proposed Materials



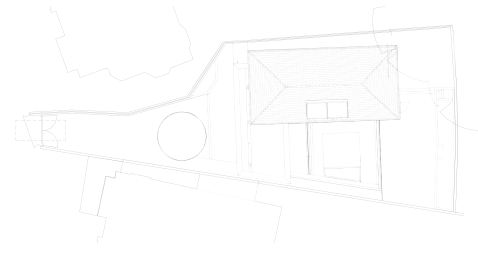
Material: To Vabel Specification
Manufacturer: BEA building products
Dimensions: 215mm x 65mm x 102,5mm



Material: Smokey Black
Manufacturer: Miller Druck
Dimensions: Bespoke dimensions



Material: Crystal Black
Manufacturer: Hardscape
Dimensions: Bespoke dimensions



Hard Landscape Materials

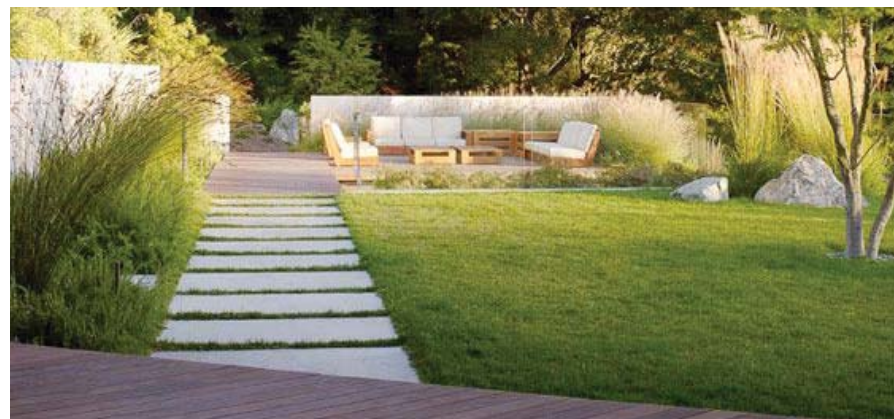
MATERIAL TYPE C: Lower Ground Courtyard

Design Intent

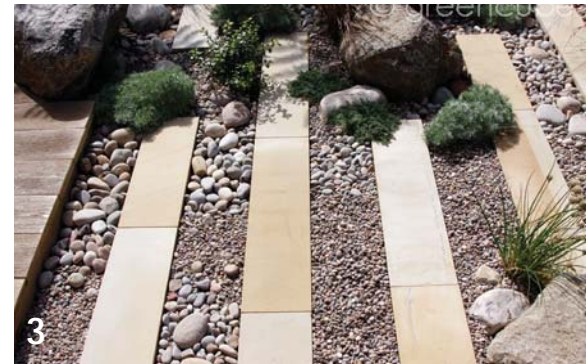
Larger scale units



Diagonal paving units unify the spaces



Proposed Material Options



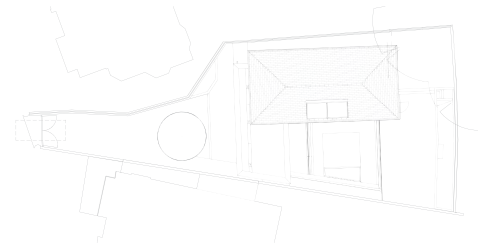
Material: Buff sandstone planks
Manufacturer: CED
Dimensions: 200mm wide x 600mm / 800mm long x 30mm deep



Material: Hard Buff Yorkstone
Manufacturer: London Stone
Dimensions: 600mm / 400 wide x 600mm / 900mm long x 30mm deep



Material: Precast Concrete - Acid Etch
Manufacturer: Evans Concrete
Dimensions: dimensions available on request



Hard Landscape Materials

MATERIAL TYPE D: Decorative aggregate

Design Intent



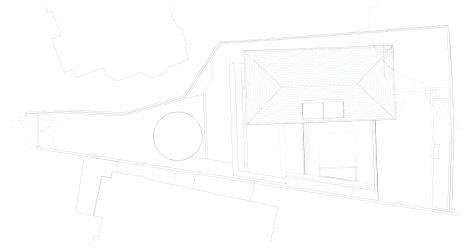
Proposed Material Options



Material: Meadowgrass marble
Manufacturer: CED
Dimensions: 14mm-8mm



Material: White marble Aggregate
Manufacturer: CED
Dimensions: 14mm-10mm



Hard Landscape Materials

MATERIAL TYPE E: Metal Planters

Design Intent



Proposed Material



Planter: Perimeta Planterline Bespoke

Manufacturer: Kinley

Dimensions: 3mm folded steel - bespoke heights / lengths as required

Location of fitting within Lyndhurst Garden : Lightwell & Lower Ground Courtyard

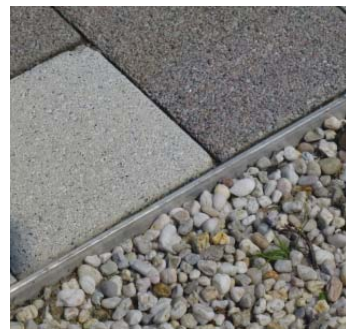
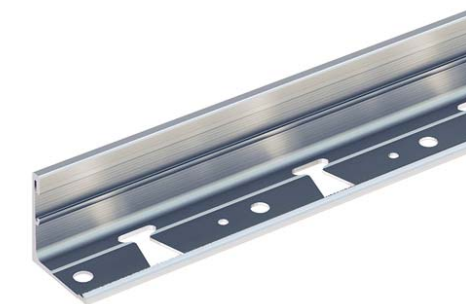
Details:

- Folded design that ensures a strong retaining structure
- Lightweight ideal for roof terrace applications
- available in Armacote powder coating to any colour

All information above as extracted from www.kinley.co.uk

MATERIAL TYPE F: Metal Edge

Proposed Material



Metal Edge: AluExcel 50mm Rigid

Manufacturer: Kinley

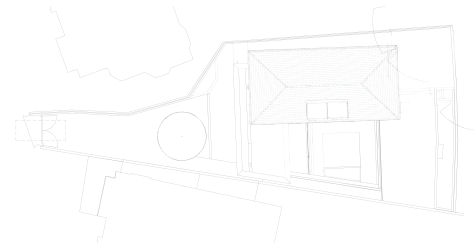
Dimensions: 350mm height, 5mm top edge thickness

Location of fitting within Lyndhurst Garden : Lower Ground Courtyard paving edge

Details:

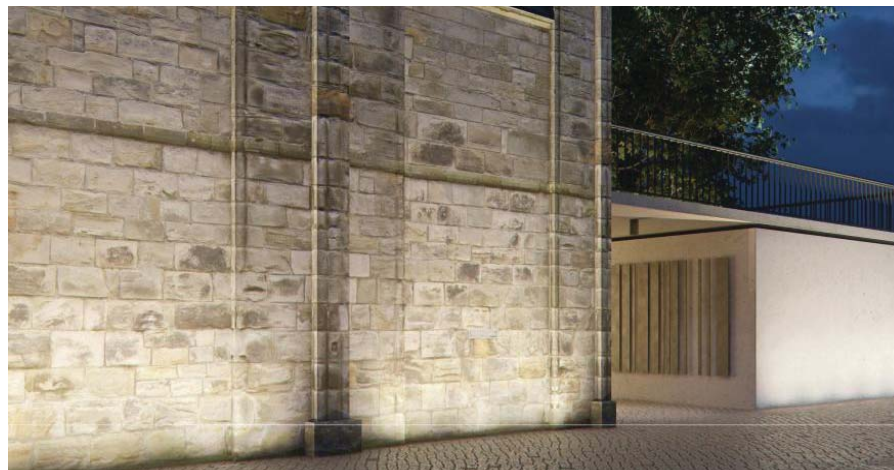
- 100% recycled aluminium, lightweight and won't rot
- Can be powder-coated to any RAL colour
- Gives a neat finish to paving edges

All information above as extracted from www.kinley.co.uk



Lighting

Proposed Lighting Type 01 - Ground light wall wash Design Intent



Proposed fitting



Fitting: Linealuce mini recessed (LED)

Manufacturer: iGuzzini

Dimensions: 552/1080/1609mm L x 55mm w x 74mm depth

Location of fitting within Lyndhurst Garden : Lightwell

Details:

- Consists of a body and outer casing for installation (to be ordered separately).
- Extruded aluminum body closed at the top by a transparent or anti-slip glass screen secured with silicone; die-cast aluminium end caps complete with silicone seals; and an aluminium outer casing with technopolymer caps.
- Dimmable monochrome and RGB versions: Vin=48V dc electronic ballasts to be ordered separately, DALI or DMX-RDM internal drivers.
- Luminaire designed for passthrough wiring.

All information above as extracted from www.iguzzini.com/linealuce-mini-recessed

NOTE: coordination with lighting supplier required to ensure glare emitting into bedroom windows is avoided. Lowest light output recommended.

Alternative fitting



Fitting: Logic R Wallwash SBL

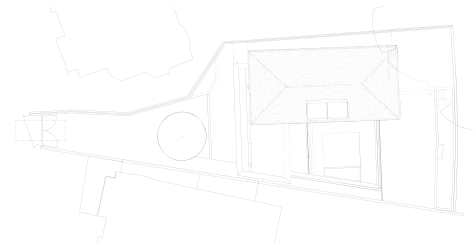
Manufacturer: Delta Light

Dimensions: 92mm diameter x 85mm depth

Location of fitting within Lyndhurst Garden : Lightwell

Note:

- Supplier to recommend number of fitting required.
- lightwell offers limited buildups above podium, supplier to confirm suitability in this location



Lighting

Proposed Lighting Type 02 - Tree uplighters

Design Intent



Proposed fitting - Shrubs & Tree fern



Fitting: Compact Spike Spotlight - Copper

Manufacturer: Lighting for Gardens

Dimensions: 111mm H x 63mm diameter

Location of fitting within Lyndhurst Garden : Lightwell fern

Details:

- Adjustable 240v spike spotlight used typically for spotlighting focal points, shrubs and uplighting small trees.
- 240v spike spotlights need their own circuit from an existing or new fuse box.
- box must be protected by a residual current device (RCD) and controlled with a double-pole isolating switch.

All information above as extracted from www.lightingforgardens.com

NOTE: light spacings & number required to be recommended by supplier

Proposed fitting - Trees



Fitting: Titan10 LED spotlight

Manufacturer: Lighting for Gardens

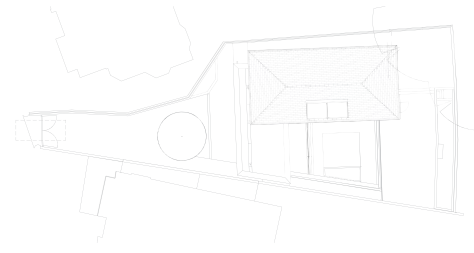
Dimensions: 170mm H x 75mm diameter x 210mm spike

Location of fitting within Lyndhurst Garden : Lightwell fern

Details:

- Adjustable 240v spike spotlight with an aluminium body and glare shield powder-coated in black
- 240v spike spotlights need their own circuit from an existing or new fuse box.
- box must be protected by a residual current device (RCD) and controlled with a double-pole isolating switch.
- NOTE: Supplier to recommend size of fitting appropriate for size of tree

All information above as extracted from www.lightingforgardens.com



Lighting

Proposed Lighting Type 03 - Recessed strip lighting Design Intent



Recessed lighting within metal edge



Recessed lighting within step units to back garden

Proposed fitting



Fitting: Curvilinear

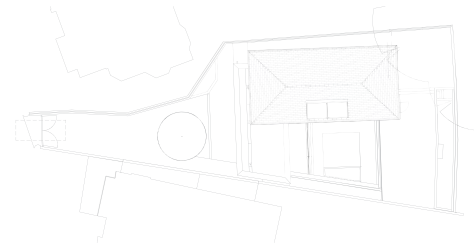
Manufacturer: InnerLED

Dimensions: 19mm W x 18mm D

Location of fitting within Lyndhurst Garden : Steps & planters

Details:

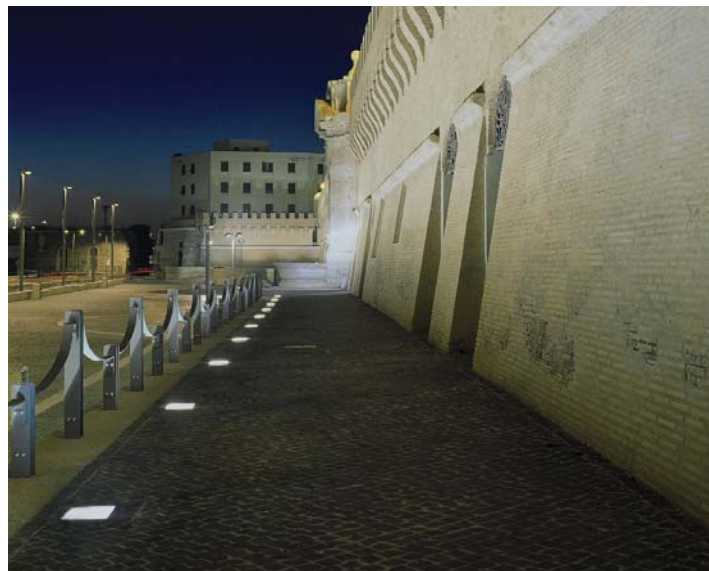
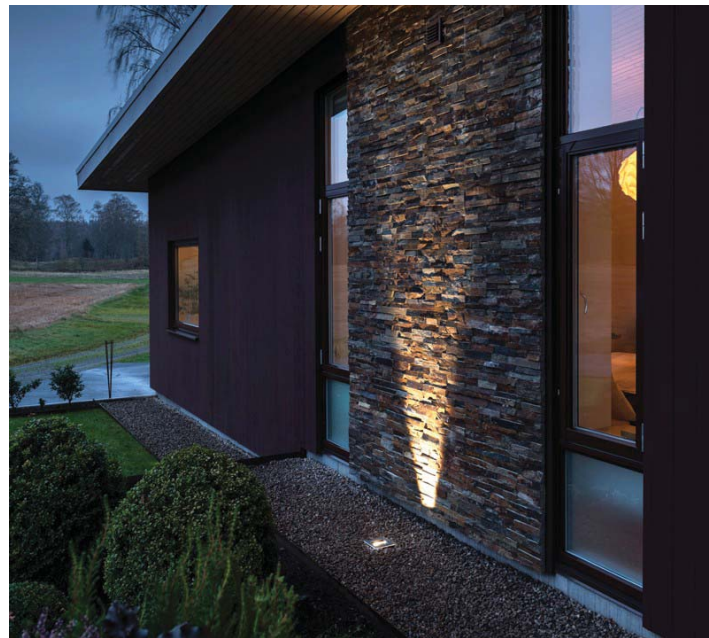
- Lighting strip to recessed within metal planter / below step units



Lighting

Proposed Lighting Type 04 - Wall Uplight

Design Intent



Proposed fitting



Fitting: Light Up Walk Professional square

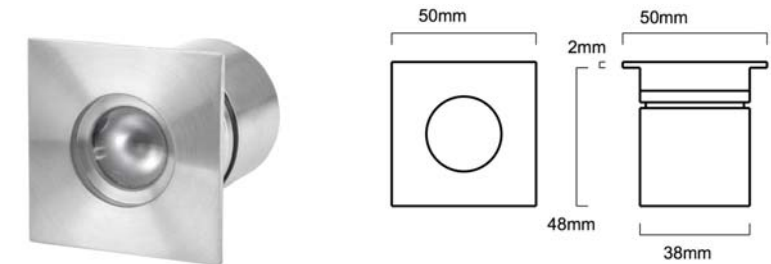
Location of fitting within Lyndhurst Garden : to alleyway to illuminate the brick wall

Manufacturer: iGuzzini

Details:

- Floor-recessed luminaire for use with halogen, discharge, fluorescent lamps and LEDs.
- Made of body and outer casing (tall or short).
- Cast aluminium structure; stainless steel AISI 304 bezel; tempered sealing glass; silicone water tight gasket; anti-glare screens designed for visual comfort; M15x1 nickel-plated brass cable clamp (M11x1 in small circular version) for connection between lower assembly and upper assembly.
- Cast aluminium outer casing.
- High visual comfort.
- Versions with adjustable optic.
- Temperature of contact <40° for LED versions.
- All screws are A2 stainless steel.

Alternative fitting



Fitting: Square recessed LED light (LV-SS414SQ)

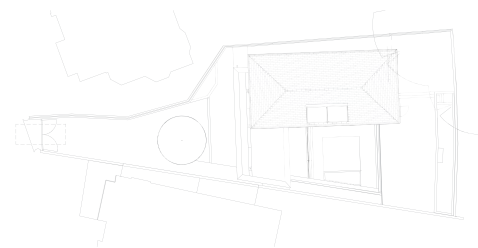
Location of fitting within Lyndhurst Garden : to alleyway to illuminate the brick wall

Manufacturer: LightVisuals

Details:

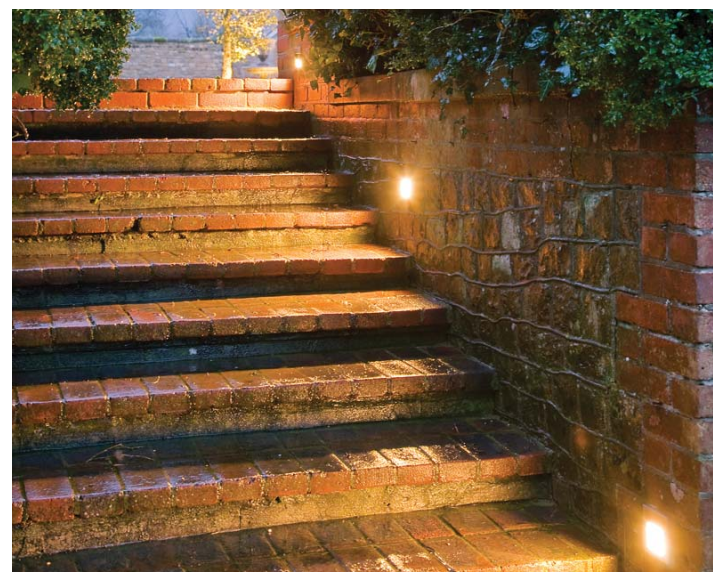
- LV-SS414SQ Square recessed LED light is a small low-voltage light designed for the up lighting of walls, pillars, and garden structures, it can be mounted as a hardscape product or installed into lawn/soil using the PVC mounting sleeve provided.
- The LV-SS414SQ can also be used for the lighting of exterior steps or as an interior product for numerous design schemes. Machined from solid billets of aluminium or 316 stainless steel.
- Available in black anodised aluminium, or 316L stainless steel.
- Temperature of contact <40° for LED versions.

NOTE: light spacings & number required to be recommended by supplier

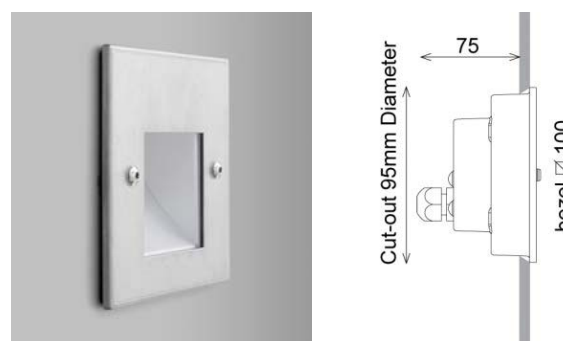


Lighting

Proposed Lighting Type 05 - Step lights



Proposed fitting



Fitting: Oslo external LED steplight

Location of fitting within Lyndhurst Garden : Driveway step brick walls

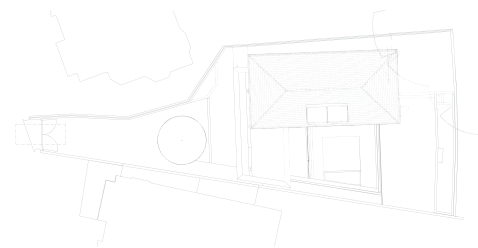
Manufacturer: John Cullen lighting

Dimensions: 100mm square x 75mm deep

Details:

- The Oslo external LED steplight is designed to provide a wash of light to steps and pathways outside or in wet environments.

NOTE: light spacings & number required to be recommended by supplier



Lighting

Proposed Lighting Type 06 - Driveway lighting

Proposed fitting



Fitting: Slotbox 40, Anthracite

Location of fitting within Lyndhurst Garden : driveway (front face to be flush with horizontal timber fencing)

Manufacturer: Intalite UK

Dimensions: 400mm H x 70mm L

Details:

- Thanks to the incorporated LED driver, the electrical connection of both versions of the SLOTBOX is made directly to 230V mains supply
- Equipped with a high-quality, warm white LED, it provides a perfect mix of efficiency and strong design character. Rated IP44, it is suitable for outdoor use.
- A concrete-anchor-set for the secure mounting is included

NOTE: light spacings & number required to be recommended by supplier

Front face of light to be flush with horizontal timber fencing

Alternative fitting



Fitting: Logic F1 213 47 112

Location of fitting within Lyndhurst Garden : driveway recessed within paving

Manufacturer: DeltaLight

Dimensions: 40mm D X 103mm Diameter

NOTE: light spacings & number required to be recommended by supplier