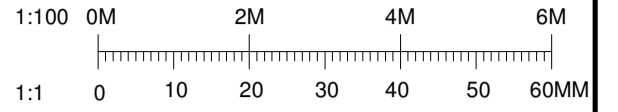


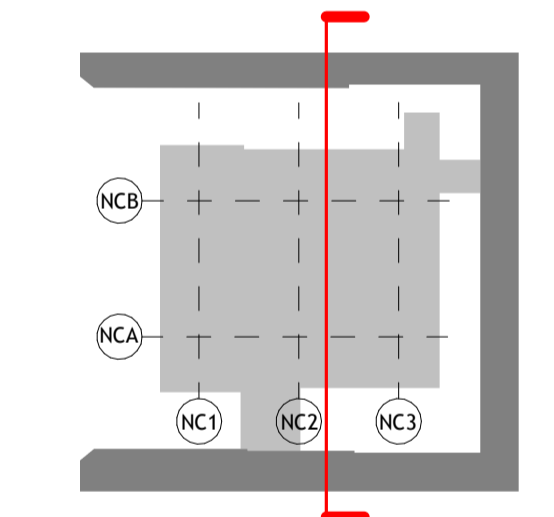
DO NOT SCALE
 THIS DRAWING IS © IAN RITCHIE ARCHITECTS LTD
 Dimensions to be verified on site.
 Figured dimensions to take preference to those scaled.
 All discrepancies to be clarified with the project Architect.
 Unless otherwise stated all levels to be AOD.
 This drawing is the property of Ian Ritchie Architects Ltd. and is issued on the condition it is not reproduced, retained or disclosed to any unauthorised person, either wholly or in part without written consent.



— EXISTING
 — NEW CONSTRUCTION

Materials Key

- ① Galvanised Steel
- ② Powder Coated Grey



Rev	Date	By	Ck	Ap	Description
P00	19.12.14	TR	CR	AS	Issued for Planning

Job Title
**LONDON SCHOOL OF
 HYGIENE AND TROPICAL
 MEDICINE (KEPPEL STREET)**

Drawing Title
**North Courtyard Building
 Proposed East-West
 Section**

© IAN RITCHIE ARCHITECTS LTD.
 110 Three Colt Street London E14 8AZ
 Tel: (44) 2073381100 Fax: (44) 2073381199

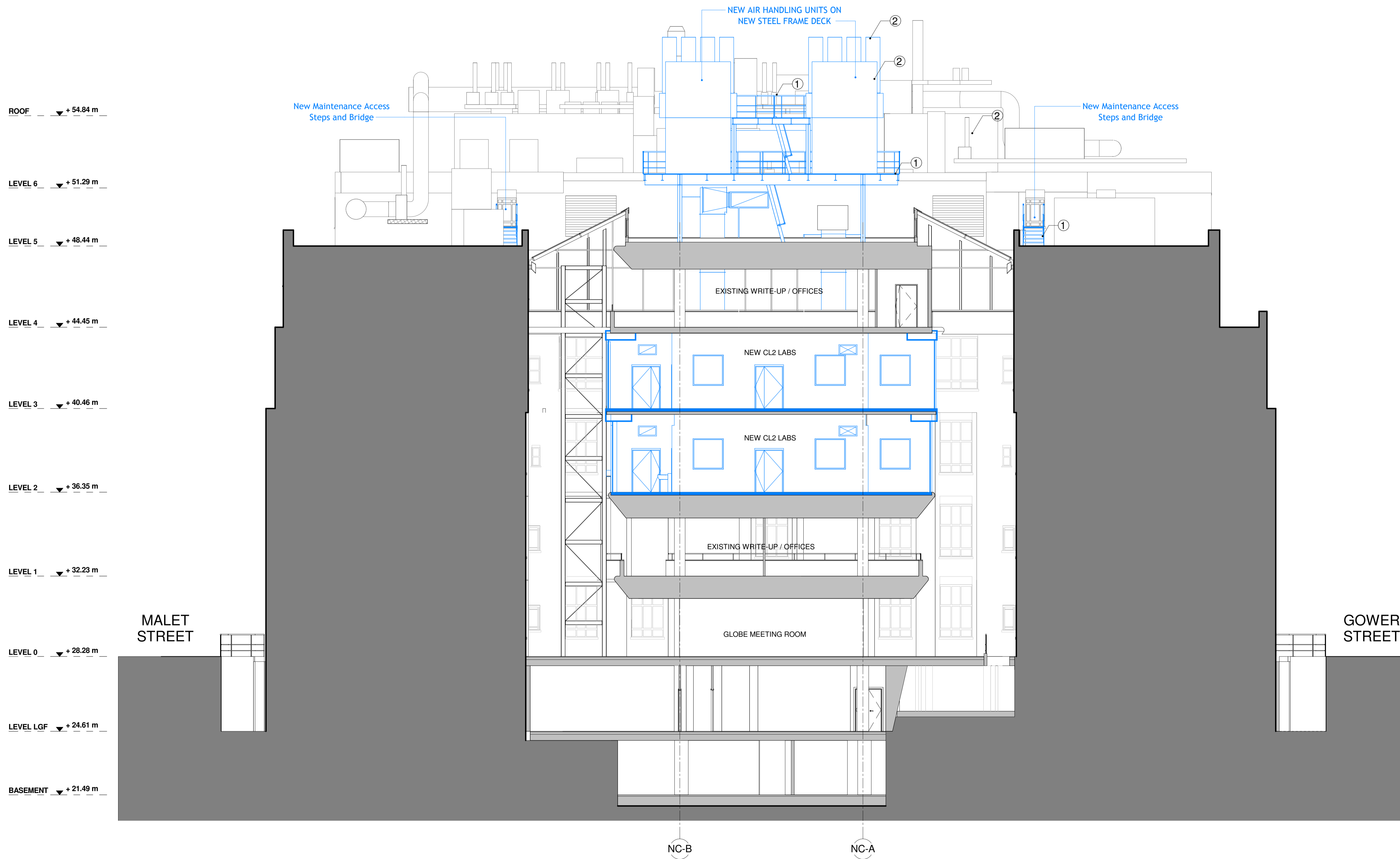
Status
PLANNING

Scale
 As indicated@A1

Date
 19.12.2017

Drawn TR	Checked CR	Approved AS
-------------	---------------	----------------

Job No. 739	Drawing No. IRAL-P1-08-1202	Rev. P00
----------------	--------------------------------	-------------



- ROOF ▼ + 54.84 m
- LEVEL 6 ▼ + 51.29 m
- LEVEL 5 ▼ + 48.44 m
- LEVEL 4 ▼ + 44.45 m
- LEVEL 3 ▼ + 40.46 m
- LEVEL 2 ▼ + 36.35 m
- LEVEL 1 ▼ + 32.23 m
- LEVEL 0 ▼ + 28.28 m
- LEVEL LGF ▼ + 24.61 m
- BASEMENT ▼ + 21.49 m

1 North Courtyard Building - Proposed East-West Section - Looking South
 1 : 100