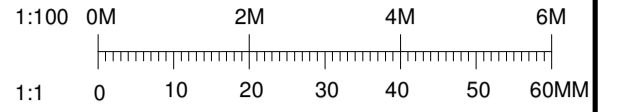
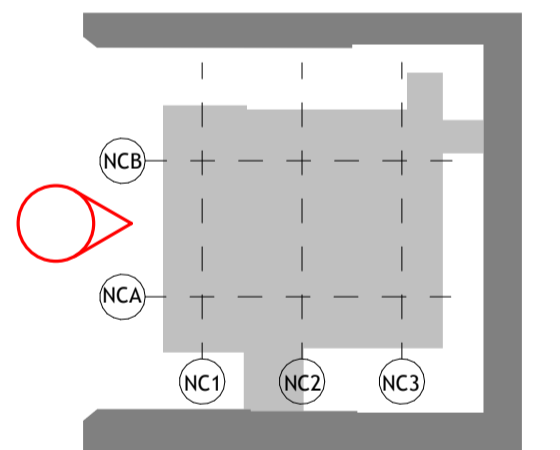
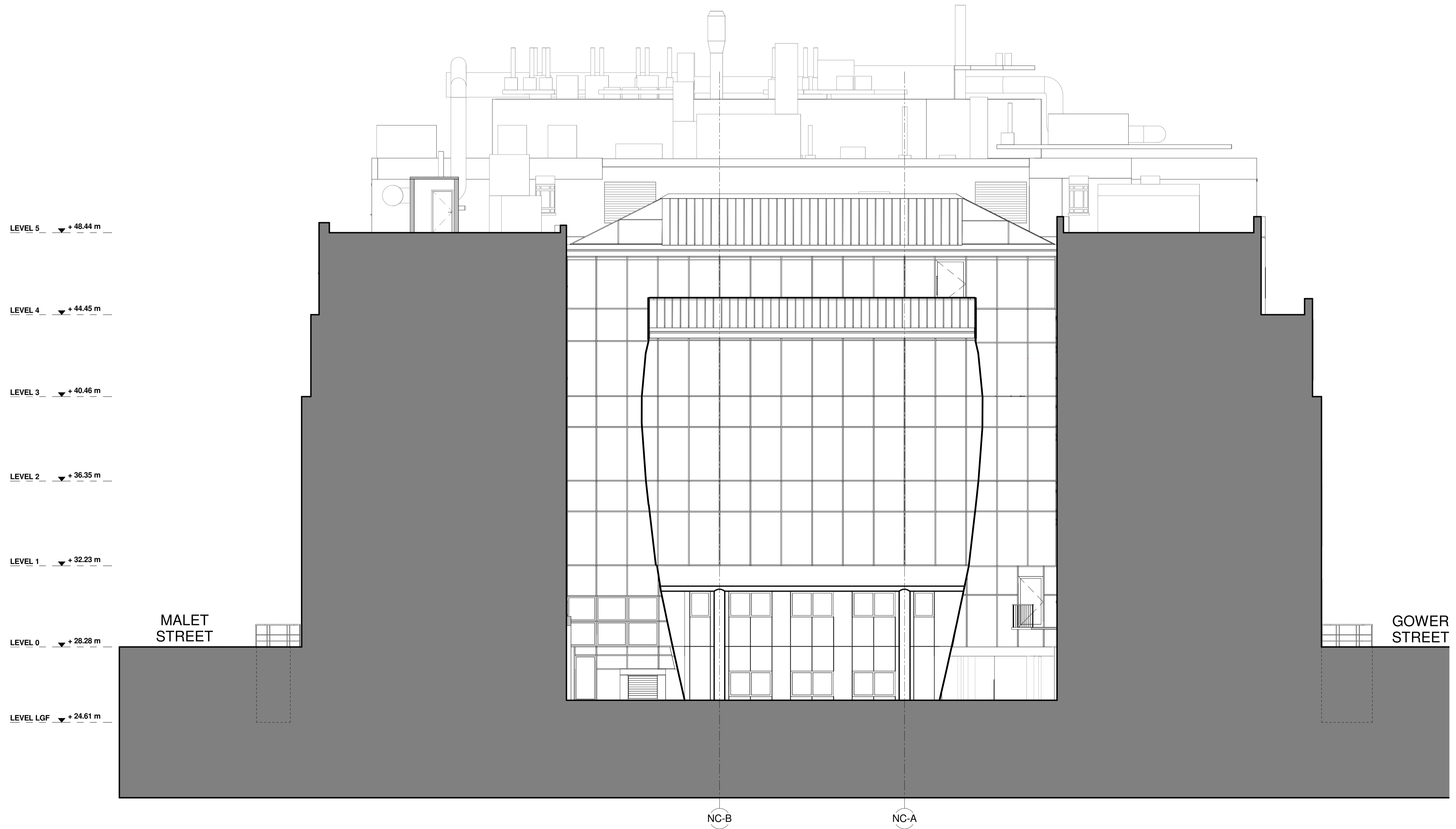


**DO NOT SCALE**  
 THIS DRAWING IS © IAN RITCHE ARCHITECTS LTD  
 Dimensions to be verified on site.  
 Figured dimensions to take preference to those scaled.  
 All discrepancies to be clarified with the project Architect.  
 Unless otherwise stated all levels to be AOD.  
 This drawing is the property of Ian Ritchie Architects Ltd. and is issued on the condition it is not reproduced, retained or disclosed to any unauthorised person, either wholly or in part without written consent.



— EXISTING  
 ■ ELEMENT TO BE REMOVED



POO	19.12.14	TOD	CR	AS	Issued for Planning
Rev	Date	By	Ck	Ap	Description

Job Title  
**LONDON SCHOOL OF  
 HYGIENE AND TROPICAL  
 MEDICINE (KEPPEL STREET)**

Drawing Title  
**North Courtyard Building  
 Existing North Elevation**

© IAN RITCHE ARCHITECTS LTD.  
 110 Three Colt Street London E14 8AZ  
 Tel: (44) 2073381100 Fax: (44) 2073381199

Status  
**PLANNING**

Scale  
 As indicated@A1

Date  
 19.12.2017

Drawn TOD	Checked CR	Approved AS
--------------	---------------	----------------

Job No. 739	Drawing No. IRAL-P1-08-0201	Rev. POO
----------------	--------------------------------	-------------

1 North Courtyard Building - Existing North Elevation  
 1 : 100