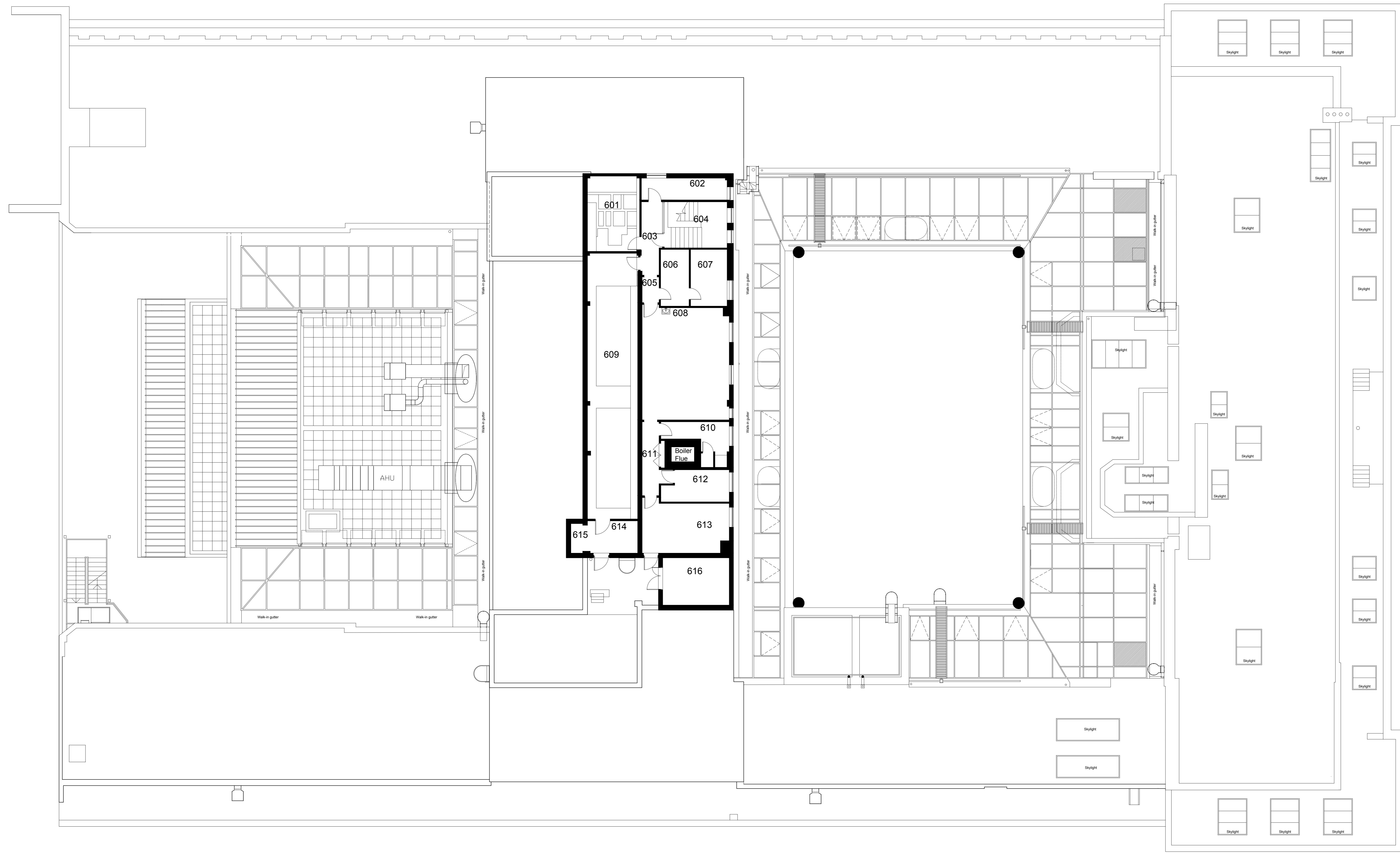
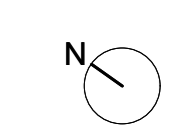
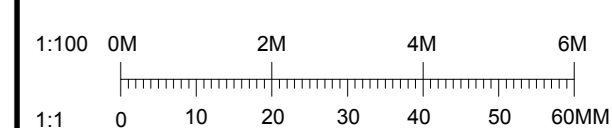


DO NOT SCALE
 THIS DRAWING IS © IAN RITCHIE ARCHITECTS LTD
 Dimensions to be verified on site.
 Figural dimensions to take preference to those scaled.
 All discrepancies to be clarified with the project Architect.
 Unless otherwise stated all levels to be AOS.
 This drawing is the property of Ian Ritchie Architects Ltd, and is
 issued on the condition it is not reproduced, related or
 disclosed to any unauthorized person, either wholly or in part without
 written consent.



01 Existing Level 06 Plan
 18-0106 Scale = 1:100

P00 19.12.17 TOD CR AS First Issue

Rev	Date	By	Ch	App	Description

Job Title
 LONDON SCHOOL OF HYGIENE
 AND TROPICAL MEDICINE
 (KEPPEL STREET)

Drawing Title
GA Plan
Level 06
Existing

© Ian Ritchie Architects Ltd
 110 Three Coks Street London E14 6AL
 Tel: (44) 207381100 Fax: (44)
 207381199

Status **PLANNING**

Scale	Date
1:100@A0	19.12.2017

Drawn	Checked	Approved
TOD	CR	AS
Job No. 739	Drawing No. IRAL-P1-08-0106	Rev. P00