



Tree Constraints Plan

(Existing Layout)



Photo 1



Photo 2



Photo 3



Photo 4

See the accompanying report for more photographs

Drawing No: CCL 09606C / TCP Rev: 1
 Title: Tree Constraints Plan (Existing Layout)
 Site: Rochester Square Spiritualist Temple NW1 9HU
 Scale: 1:200 Paper Size: A2



Tree Retention Categories	
Stems & canopies shown	
	Category A tree
	Category B tree
	Category C tree
	Category U tree

Tree Constraints Plan

Trees of high quality with an estimated life expectancy of 40+ years. Usually large trees with significant presence or smaller trees with excellent form. Retention of these trees is highly desirable.

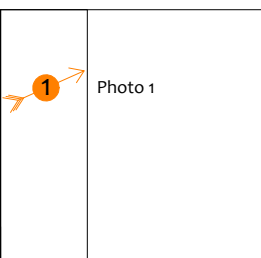
Trees of moderate quality with a life expectancy of 20+ years. Usually maturing trees, or younger trees with good form. Retention of these trees is desirable though less than Category A trees

Unremarkable trees of low quality and merit. Individual specimens are not considered to be a material planning consideration.

Trees unsuitable for retention due to their very poor condition.

	BS 5837 Root Protection Area (radius = 12xstem diameter)
	Root Protection Area needing amendment due to site conditions, e.g. presence of existing road or building.
	Root Protection Area having been amended to account for site conditions

T1 = Tree No 1 G2 = Group No 2 H3 = Hedge No 3



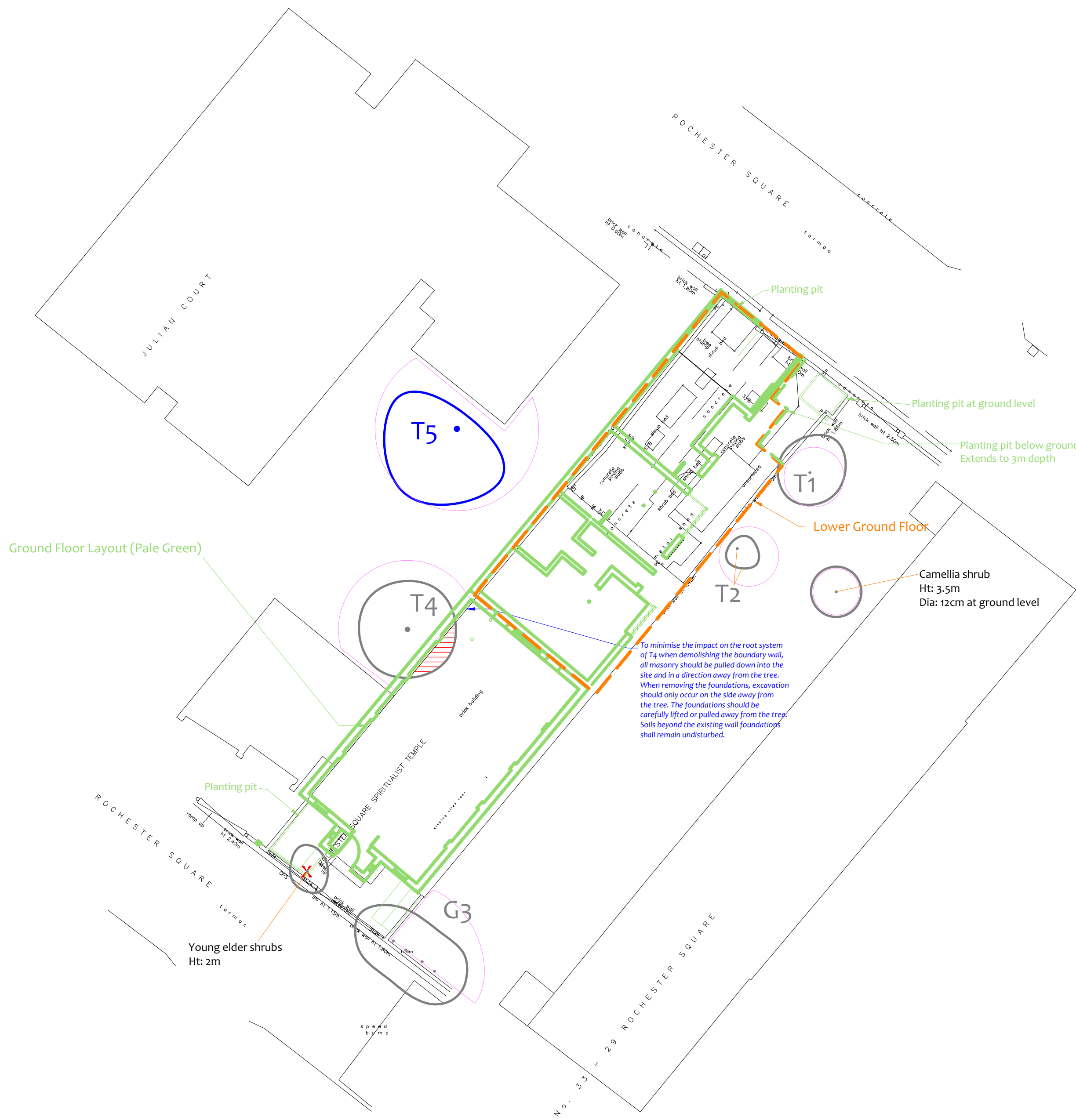
MN = Measured North:
 Canopy spreads are sometimes measured to an approximate N defined by site features. Often more accurate, especially where rows of trees are not aligned N-S or E-W.

Tree Ref.	Species	Height (m)	Root Protection Area		
			Radius (m)	m ²	Square (m)
T1	Cherry	4	1.8	10	3.2
T2	Spindle	2.5	1.8	10	3.2
G3	Lime	5	1.8	10	3.2
T4	Plum	5	3.6	41	6.4
T5	Black Locust	15	4.2	55	7.4



Impact Assessment Plan

(Existing Layout with Proposals Overlaid)



Drawing No: CCL 09606C / IAP Rev: 3
 Title: Impact Assessment Plan (Existing Layout with Proposals Overlaid)
 Site: Rochester Square Spiritualist Temple NW1 9HU
 Scale: 1:200 Paper Size: A2



Tree Retention Categories	
Stems & canopies shown	
	Category A tree
	Category B tree
	Category C tree
	Category U tree

Impact Assessment Plan

Trees of high quality with an estimated life expectancy of 40+ years. Usually large trees with significant presence or smaller trees with excellent form. Retention of these trees is highly desirable.

Trees of moderate quality with a life expectancy of 20+ years. Usually maturing trees, or younger trees with good form. Retention of these trees is desirable though less than Category A trees.

Unremarkable trees of low quality and merit. Individual specimens are not considered to be a material planning consideration.

Trees unsuitable for retention due to their very poor condition.

BS 5837 Root Protection Area (radius = 12xstem diameter)

Root Protection Area needing amendment due to site conditions, e.g. presence of existing road or building.

Root Protection Area having been amended to account for site conditions

T1 = Tree No 1 G2 = Group No 2 H3 = Hedge No 3

Tree to be removed to facilitate the proposal

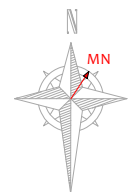
Tree to be removed due to its low quality

Proposed pruning

MN = Measured North:

Canopy spreads are sometimes measured to an approximate N defined by site features. Often more accurate, especially where rows of trees are not aligned N-S or E-W.

Tree Ref.	Species	Height (m)	Root Protection Area		
			Radius (m)	m ²	Square (m)
T1	Cherry	4	1.8	10	3.2
T2	Spindle	2.5	1.8	10	3.2
G3	Lime	5	1.8	10	3.2
T4	Plum	5	3.6	41	6.4
T5	Black Locust	15	4.2	55	7.4

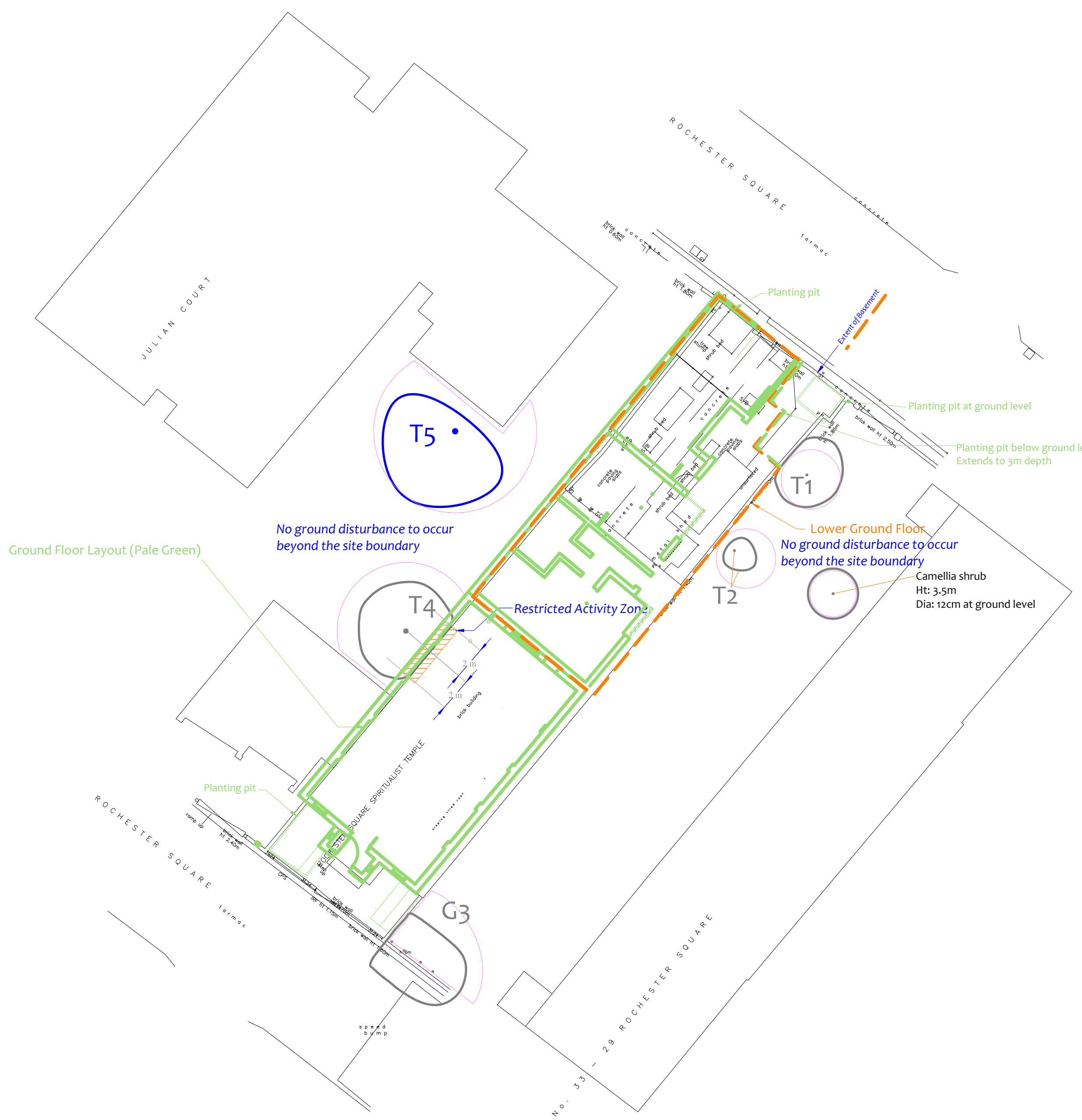


Tree Protection Plan

Restricted Activity Zones

Restrictions are detailed within the accompanying Method Statement

	Restricted Activity Zone
--	--------------------------



Drawing No: CCL 09606C / TPP Rev: 3
 Title: Tree Protection Plan
 Site: Rochester Square Spiritualist Temple NW1 9HU
 Scale: 1:200 Paper Size: A2



Tree Retention Categories	
Stems & canopies shown	
	Category A tree
	Category B tree
	Category C tree
	Category U tree

Trees of high quality with an estimated life expectancy of 40+ years. Usually large trees with significant presence or smaller trees with excellent form. Retention of these trees is highly desirable.

Trees of moderate quality with a life expectancy of 20+ years. Usually maturing trees, or younger trees with good form. Retention of these trees is desirable though less than Category A trees

Unremarkable trees of low quality and merit. Individual specimens are not considered to be a material planning consideration.

Trees unsuitable for retention due to their very poor condition.

Tree Protection Plan

BS 5837 Root Protection Area (radius = 12xstem diameter)

Root Protection Area needing amendment due to site conditions, e.g. presence of existing road or building.

Root Protection Area having been amended to account for site conditions

T1 = Tree No 1 G2 = Group No 2 H3 = Hedge No 3

MN = Measured North:
 Canopy spreads are sometimes measured to an approximate N defined by site features. Often more accurate, especially where rows of trees are not aligned N-S or E-W.

Tree Ref.	Species	Height (m)	Root Protection Area		
			Radius (m)	m ²	Square (m)
T1	Cherry	4	1.8	10	3.2
T2	Spindle	2.5	1.8	10	3.2
G3	Lime	5	1.8	10	3.2
T4	Plum	5	3.6	41	6.4
T5	Black Locust	15	4.2	55	7.4