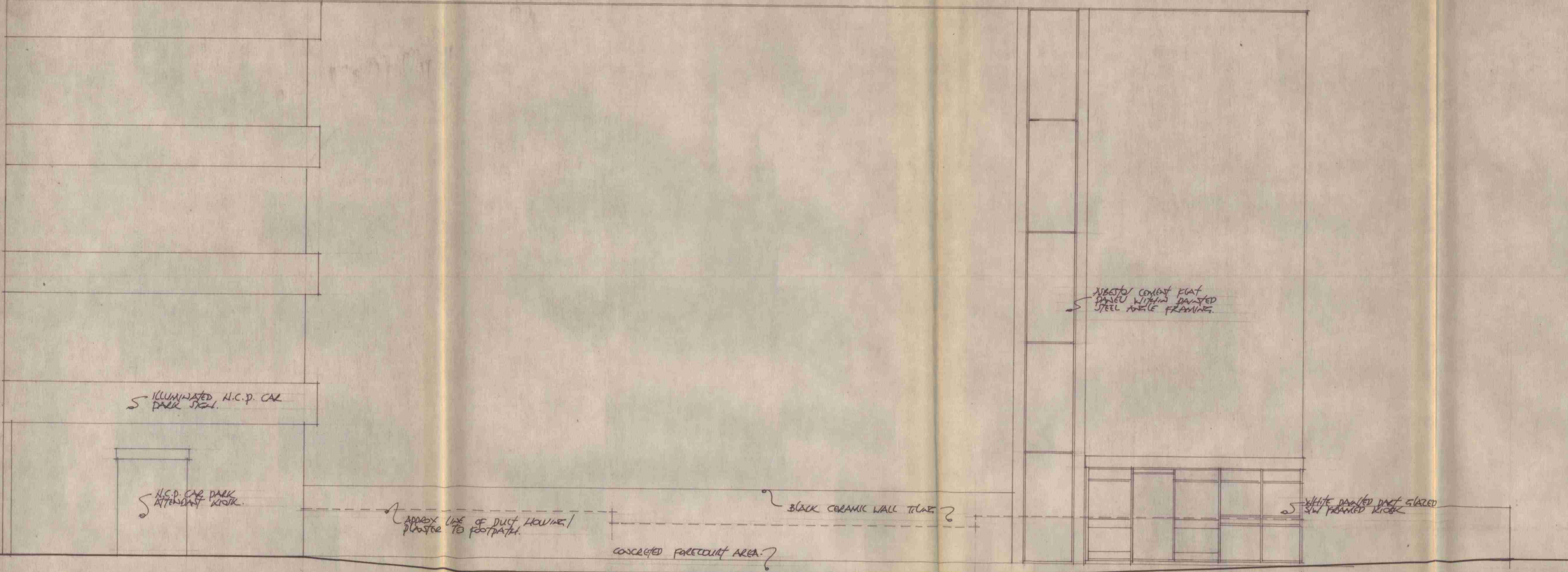


LONDON BOROUGH OF GARDEN
TOWN AND COUNTRY PLANNING ACTS
18 JUN 1992
PLANS APPROVED
ON BEHALF OF THE COUNCIL

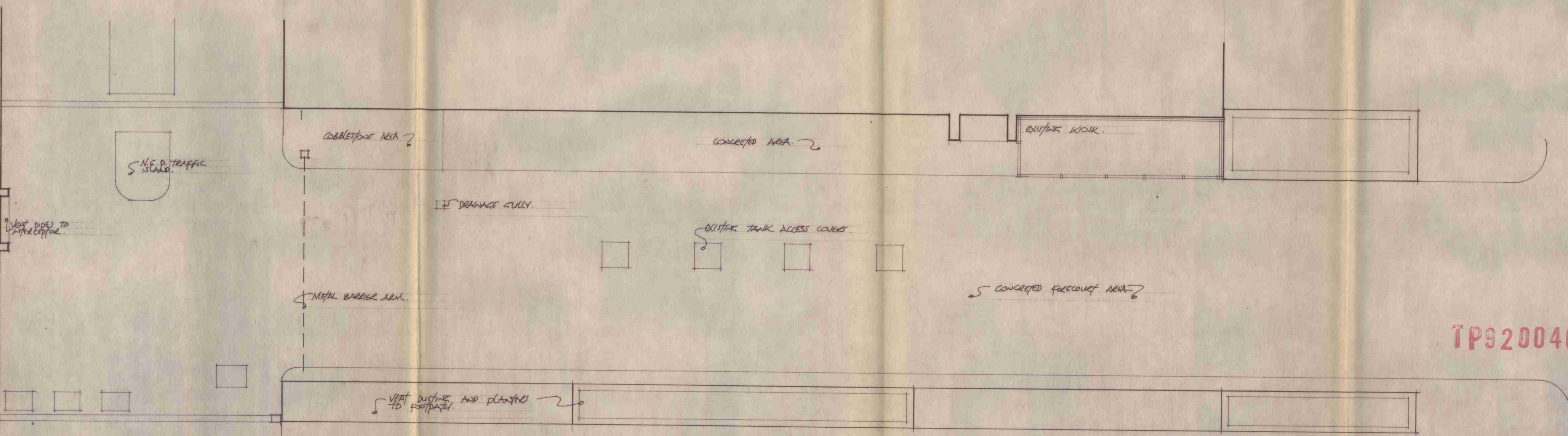
RECEIVED
22 JUN 1992

REV. 3 MAY 92 MINOR REVISIONS - NOTET PAPER.
REV. 2 APRIL 92 GENERAL MARK REVISIONS.

FILLING STATION MUSEUM STREET WC1
SKETCH PROPOSAL
ELEVATION / SECTION
1:50
APRIL 1992
JM.492.103 B



ELEVATION TO MUSEUM STREET

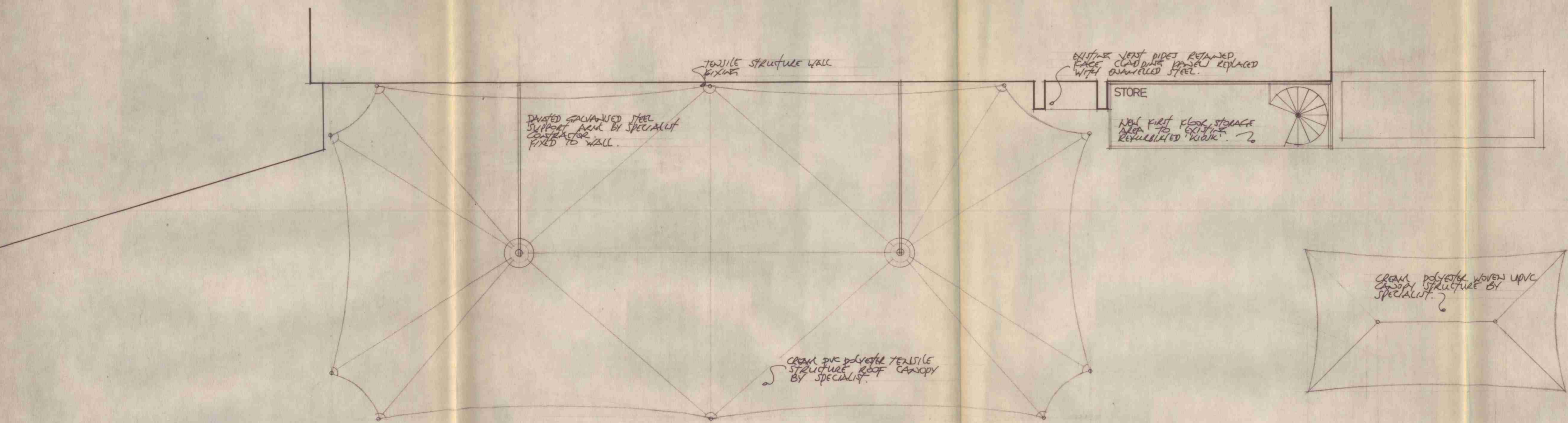


GROUND FLOOR PLAN

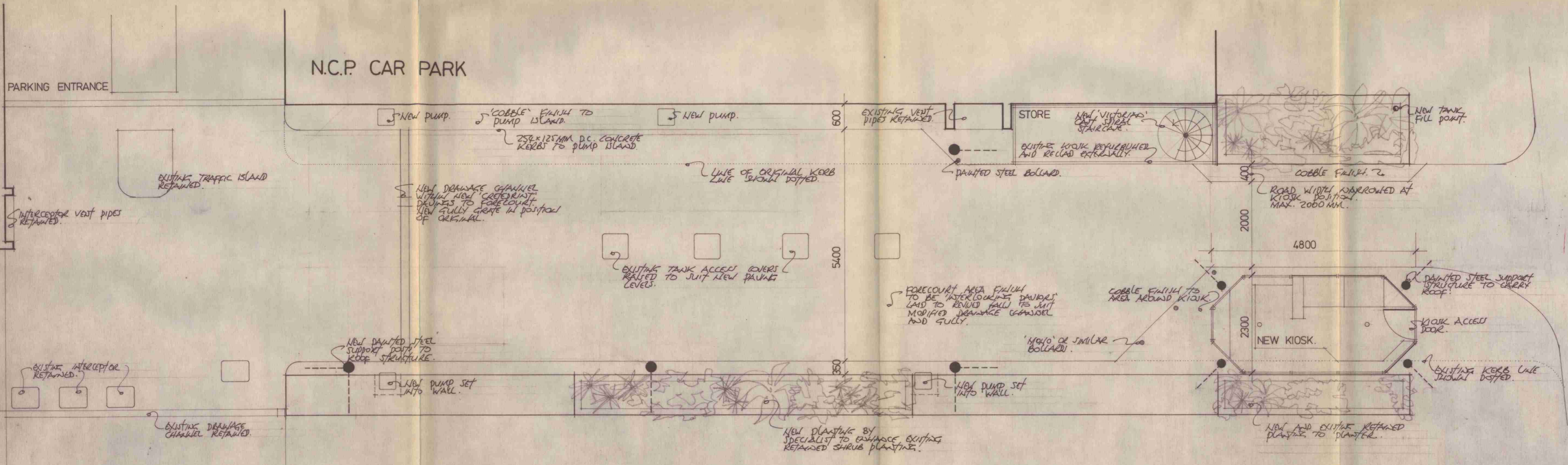
LONDON BOROUGH OF CAMDEN
TOWN AND COUNTRY PLANNING ACTS
18 JUN 1992
PLANS APPROVED
ON BEHALF OF THE COUNCIL

TP9200404

FILLING STATION MUSEUM STREET WC1
1:50
APRIL 1992
EXISTING JM.492.101



ROOF PLAN

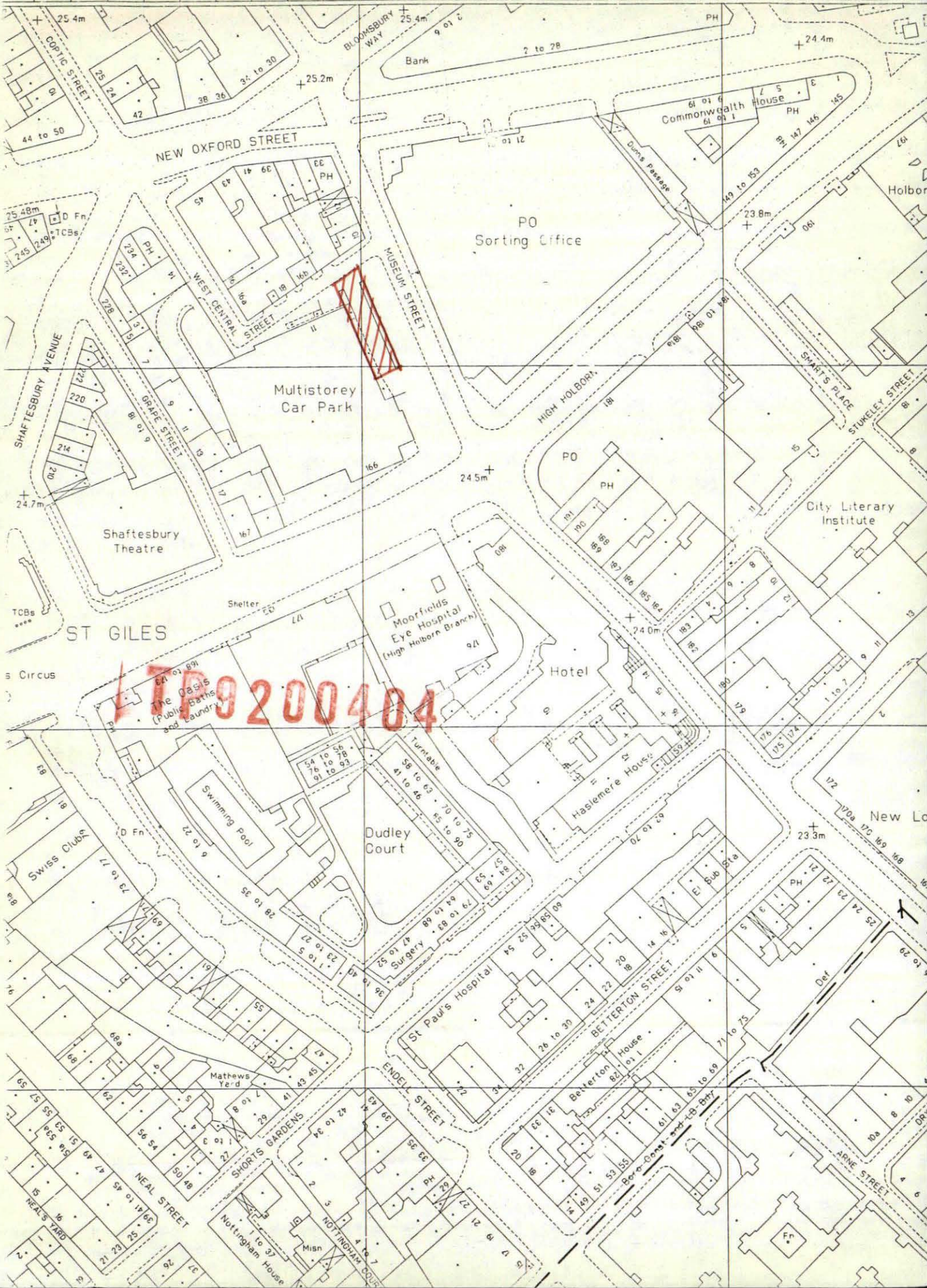


GROUND FLOOR PLAN

TP9200404

LONDON BOROUGH OF CAMDEN
TOWN AND COUNTRY PLANNING ACTS
18 JUN 1992
PLANS APPROVED
ON BEHALF OF THE COUNCIL

A. APRIL '92 MINOR GENERAL REVISIONS
FILLING STATION MUSEUM STREET WC 1
SKETCH PROPOSAL 1:50
PROPOSAL PLANS J.M. 492.102 A
APRIL 1992



TP9200404