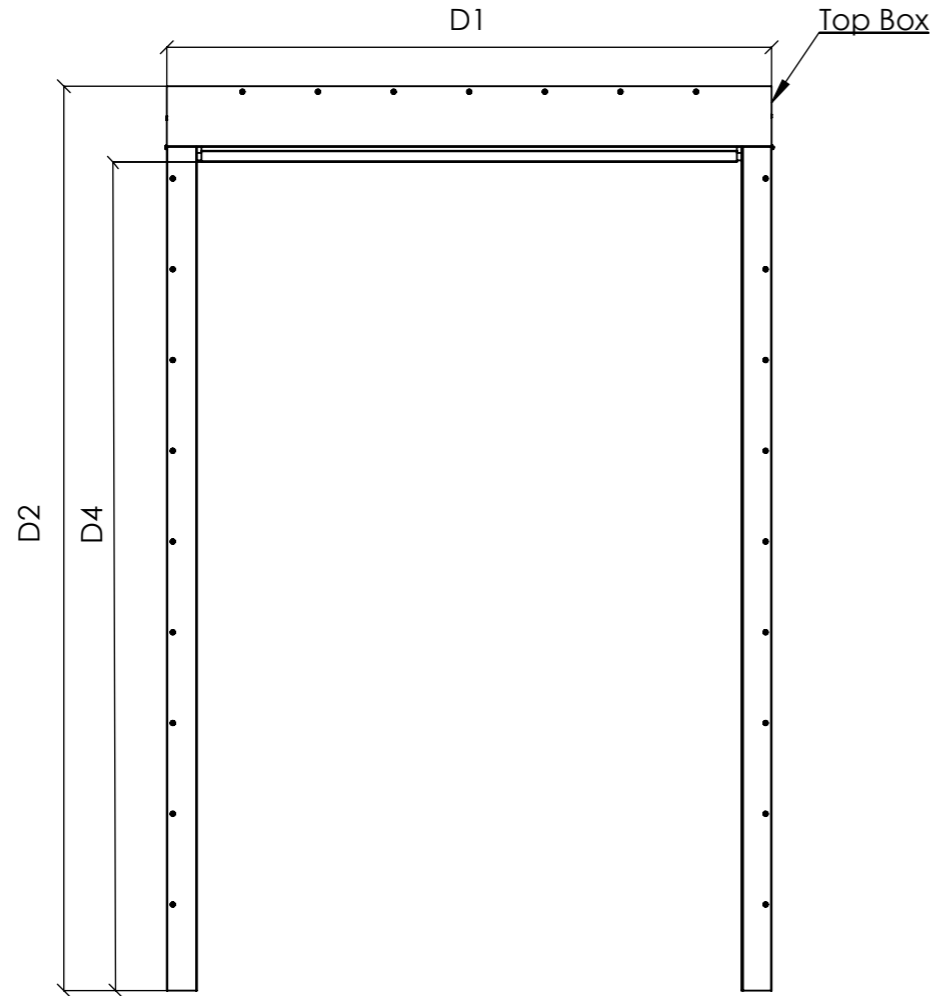


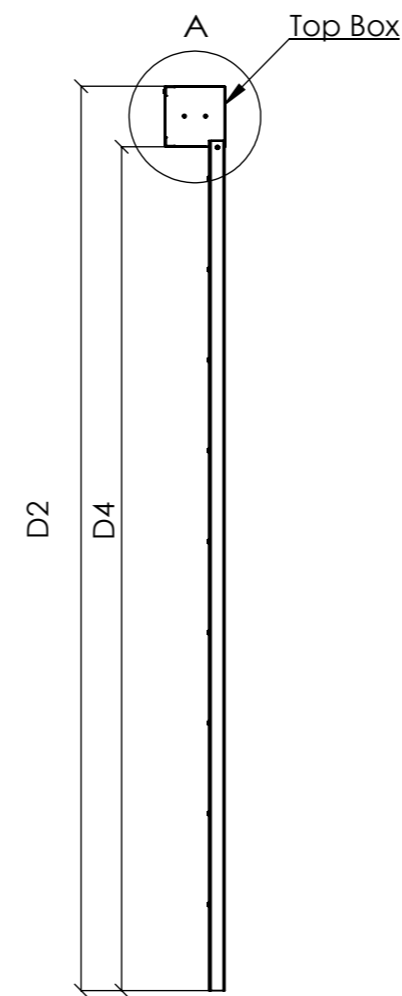


Plan Section
FS240 Fire Curtain

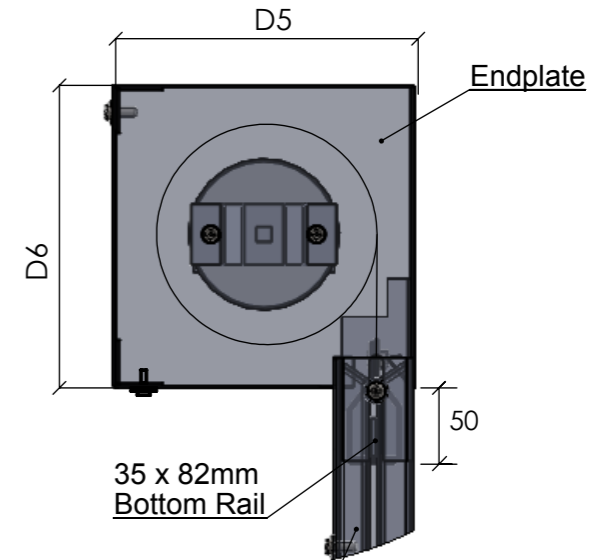
Motor Side : TBC



Elevation
FS240 Fire Curtain



Full Height Section
FS240 Fire Curtain



100 x 53 mm Sideguides
Please note that
if creating any channels
in the wall in order to
recess the Fire Curtain,
you must allow 70mm
for it to fit properly.
Recessed 5 mm into Top Box


Enlarge Top Box Section (1:5)

Key switch included to manually raise the curtain in case of a false alarm and for regular testing.

Electrical and Alarm requirement
Electrical requirements are a full 240v mains power supply via a 13amp fused spur or 3 pin wall socket and the alarm connection would need to be normally closed volt free and our system is 24v so the alarm must be able to work with a 24v system.

Dimention		
D1	Overall Width	1706
D2	Overall Height	2300
D3	Clear Opening Width	1506
D4	Clear Opening Height	2090
D5	Endplate Width	160
D6	Endplate Height	160
Powder Coating		
RAL	TBC	

Required	
Key Switch	1
Emergency Retract Button	TBC
Beam Sensor	TBC
Audio Visual Sensor	TBC
Timer Relay	TBC
Smoke Detector	TBC
Heat Detector	TBC
Alarm Relay Base	TBC
Delay / Split Drop	TBC
Auto Reset	TBC
Smoke Seals	TBC

UNLESS OTHERWISE SPECIFIED: DIMENSIONS ARE IN MILLIMETERS SURFACE FINISH: TOLERANCES: LINEAR: ANGULAR:				DEBUR AND BREAK SHARP EDGES		DO NOT SCALE DRAWING		REVISION	
DRAWN A Duffew				SIGNATURE		DATE 06/12/2017		THESE DRAWINGS AND SPECIFICATIONS ARE THE PROPERTY OF SMOKE & FIRE CURTAINS LTD AND SHALL NOT BE REPRODUCED OR COPIED OR USED AS THE BASIS FOR THE MANUFACTURE OR SALES OF APPARATUS WITHOUT PERMISSION	
CHK'D				APPV'D		MFG		 Smoke & Fire Curtains Ltd 9 Brook Street, Syston, Leicester, LE17 1GD t: + 44 (0)116 352 7223 f: + 44 (0)116 269 2806 e: enquiries@firecurtains.net w: www.firecurtainsltd.com	
Q.A				MATERIAL: Zintec		DWG NO. SFC2157		TITLE: Q13873 GFS Fire Curtain 2 1706 x 2300	
WEIGHT:				SCALE:		SHEET 1 OF 1		A3	