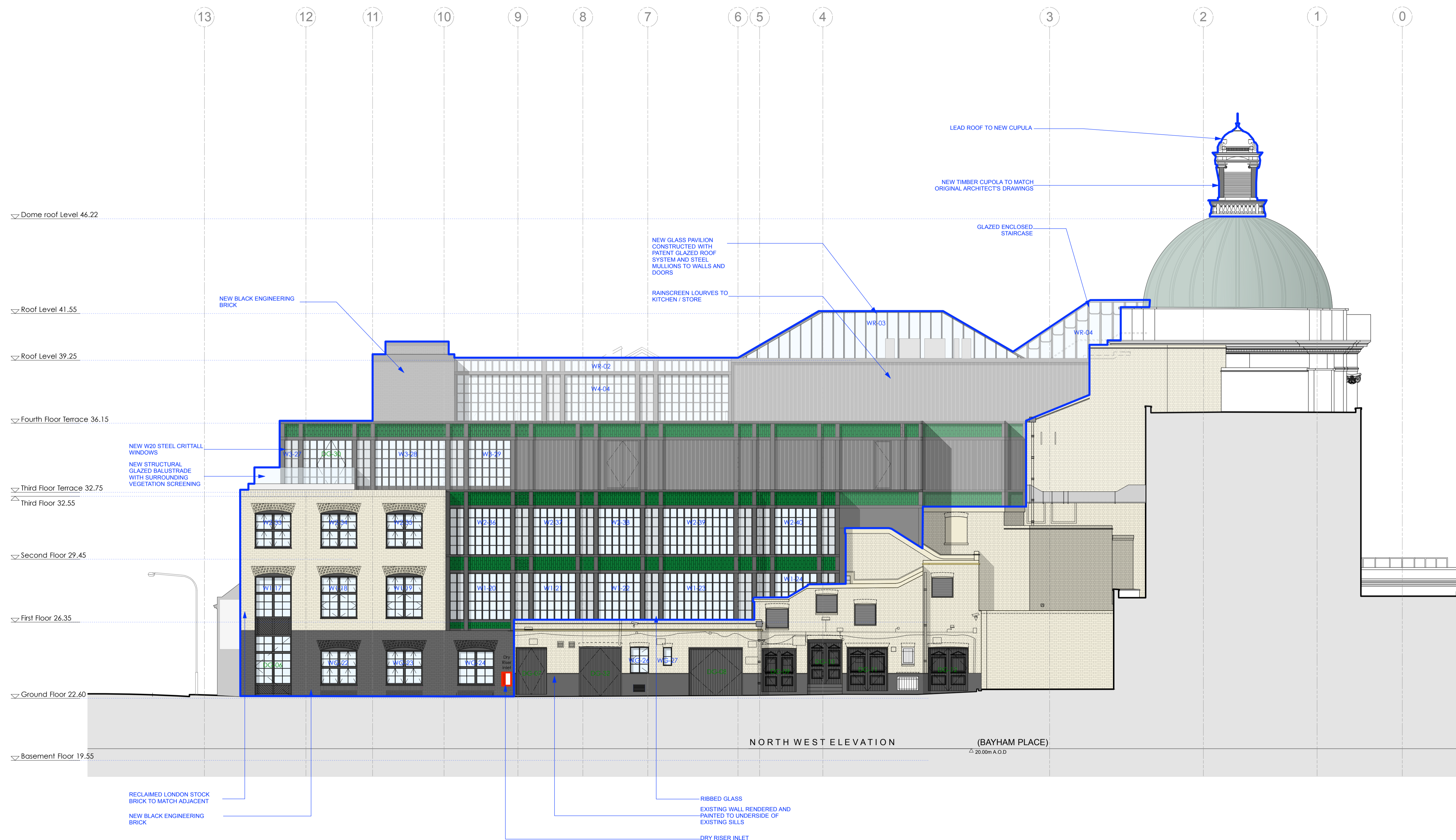
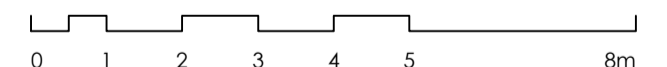
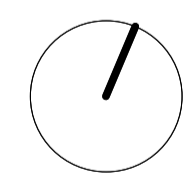


revision / date / amendments
A / 24/10/17 / Updated window numbers
B / 06/12/17 / Window (WG-25) omitted for new double doors (DG-32) added to relocated bin store.



06.12.17



PLANNING
 Archer Humphries Architects
 Basement
 Central House
 142 Central Street
 London, United Kingdom
 EC1V 8AR
 T: +44 (0) 20 7251 8555

project title		scale	date
KOKO + Hope & Anchor + Bayham Place Camden, London		1:100 (B.A.)	13.04.17
drawing title	drawn	checked	
Proposed Bayham Place Elevation	FR/PC	DA	
drawing number	revision		
AHA/KKG/GA/203	B		