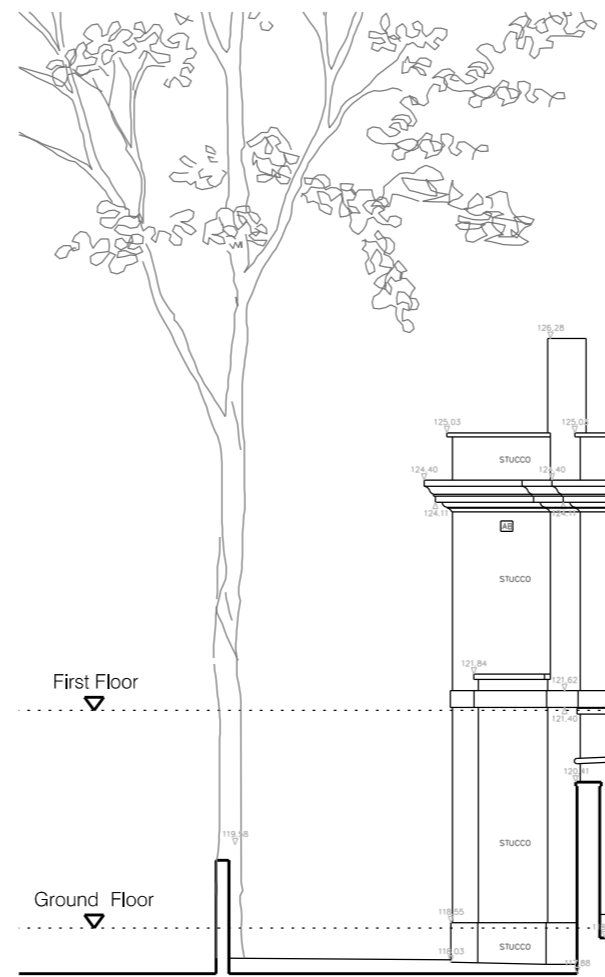




11 Squire's Mount | 12 Squire's Mount | Access road | 18 E Heath Road

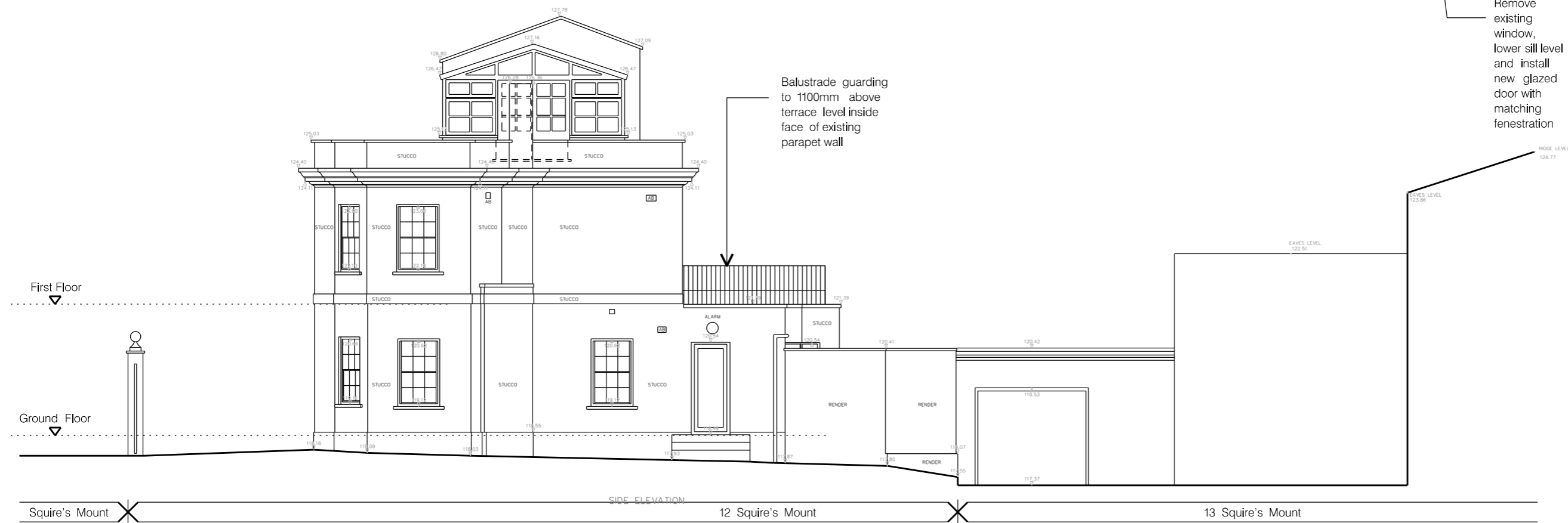
NORTH EAST (FRONT) ELEVATION



18 E Heath Road | Access Road | 12 Squire's Mount | 11 Squire's Mount

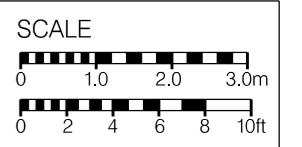
SOUTH WEST (REAR) ELEVATION

Black painted metal railing balustrade guarding to 1100mm above terrace level inside face of existing parapet wall



Squire's Mount | 12 Squire's Mount | 13 Squire's Mount

NORTH WEST (SIDE) ELEVATION



| REV. | DESCRIPTION | DATE |
|------|---|------------|
| B | BALUSTRADE REBUILT TO BLACK FINISHED METAL FINISH | 30/10/2017 |
| A | GENERAL UPDATE | 30/10/2017 |

PROJECT
12 SQUIRES MOUNT
HAMPSTEAD
LONDON NW3 1ED
DRAWING TITLE
PROPOSED ELEVATIONS

SCALE: 1:100 @ A3 DATE: OCTOBER 2017
DRAWING NO.: 3192/P/14 REC: B

50 BOROUGH HIGH STREET
LONDON SE1 1LL
ARCHITECTS DESIGNERS PLANNERS