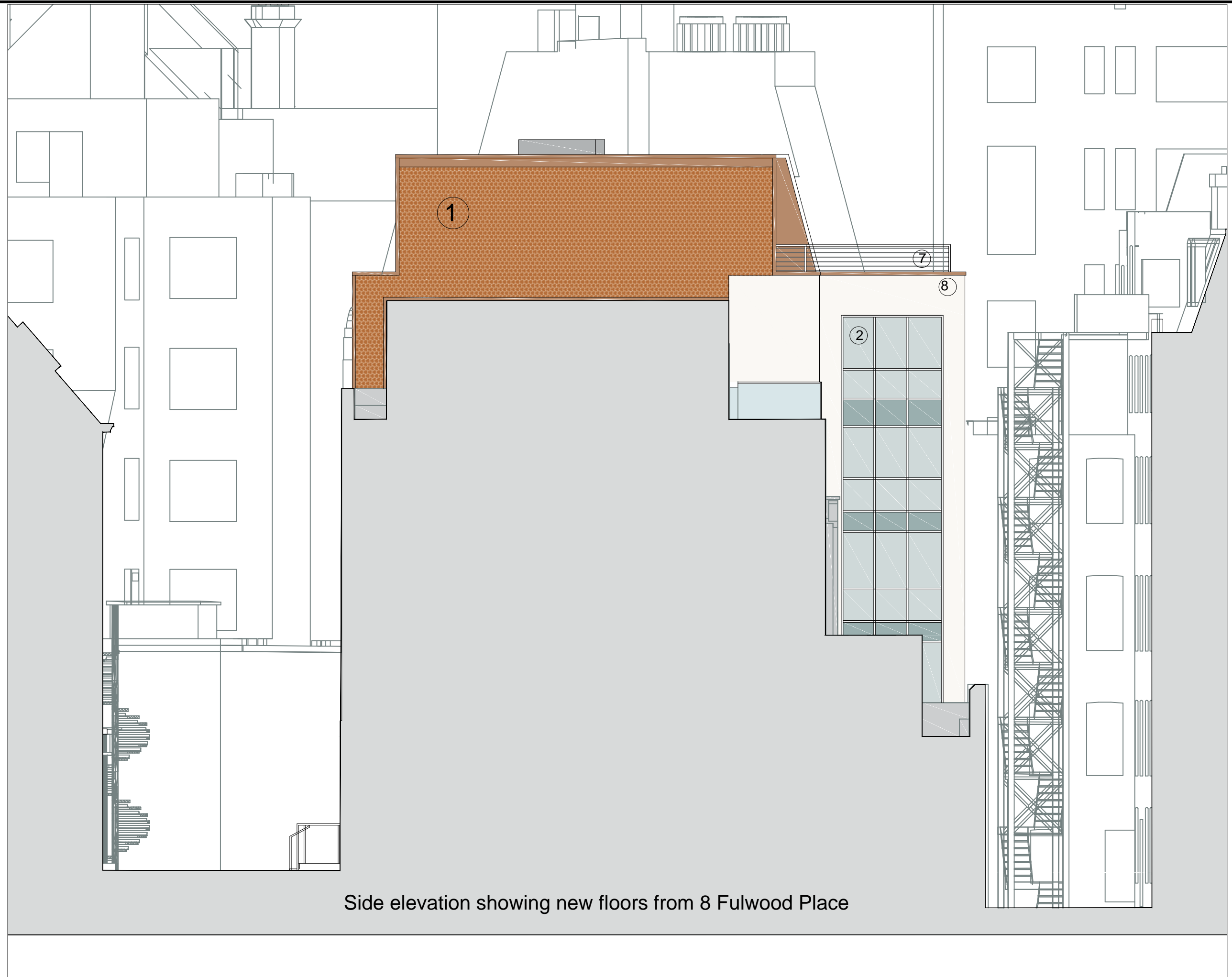


This drawing is copyright and may not be reproduced without the permission of gcp Chartered Architects Ltd. All drawings to be read in conjunction with the project specification with all works carried out in accordance with the latest British Standards and Codes of practice. Except for the purposes of assessing planning applications, this drawing is not to be scaled, use figured dimensions only. All dimensions are to be checked on site and any discrepancies between this drawing and other information given elsewhere must be reported to gcp Chartered Architects before work proceeds.



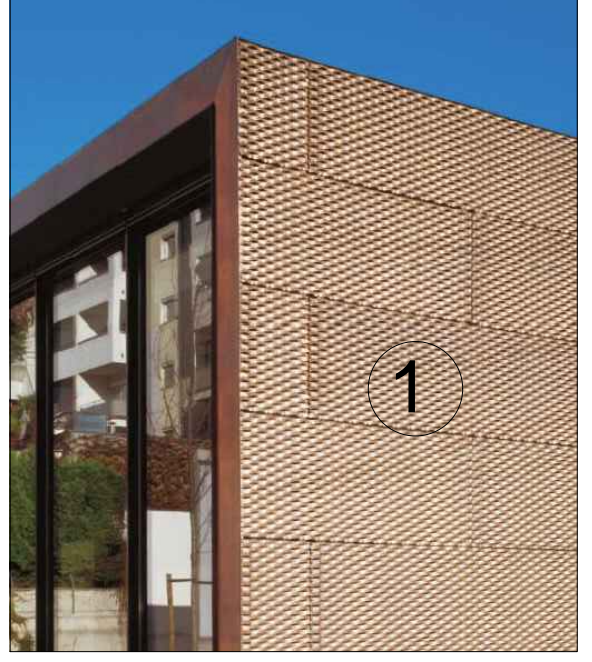
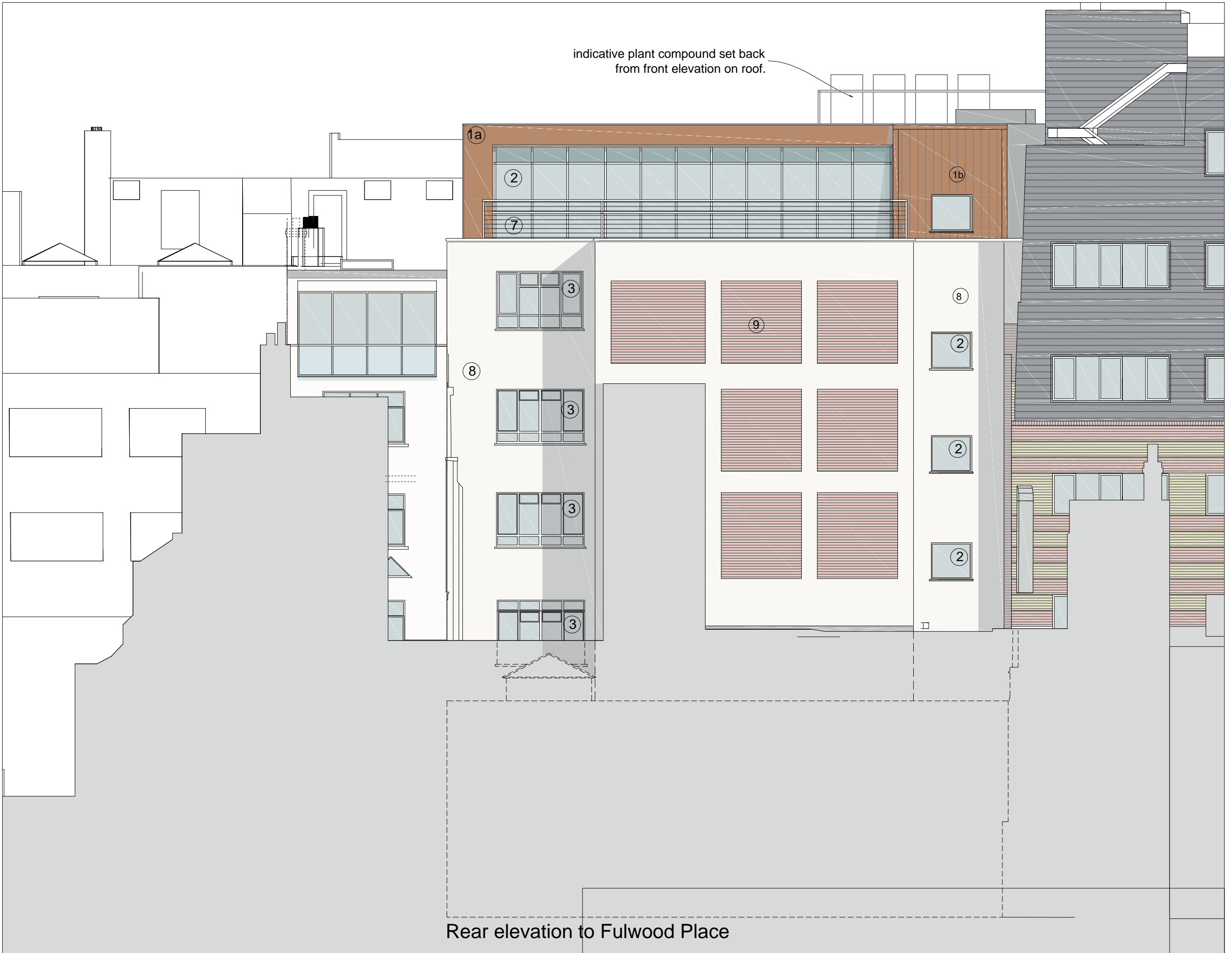
Side elevation showing new floors from 8 Fulwood Place



Side elevation showing new floors from 3 Fulwood Place



Rear elevation to Fulwood Place



Legend

- 1 KME - TECU - Perforated copper alloy facade rainscreen cladding - colour Bronze
- 1a KME - TECU - smooth flat finish in Bronze colour with matching surround trims and facias
- 1b KME - TECU - smooth flat finish using standing seam sheet cladding built up system to staircase
- 2 New black colour self finish colour coated aluminium framed windows and curtain walling systems, with solar glass and opening lights, including doors at fifth floor level to access terrace areas
- 3 Replacement double glazed aluminium framed windows to front elevation onto Fulwood Place and rear elevation in grey colour coated factory finish
- 4 Proprietary self finish through colour thin coat render system on insulation to rear elevation - colour white
- 5 Curved automated glass door lobby drum unit
- 6 Remodelled entrance ramp and steps with balustrade system in colour coated black steel with stainless steel handrailing - see drawing 220 for details
- 7 Stainless steel balustrade to fifth floor terraces front and rear - see drawing 221 for details
- 8 New insulated render system.
- 9 Brick slip infill panels. Brick to match existing.

Revision	Description	Rev By	Date
E	Rear elevation materials amended	-	18.12.2017
D	Planning submission	-	23.10.2017
C	amended front elevation	-	10.10.2017
B	4th fl set back indicated	-	31.07.2017
A	Pre-Planning submission	-	09.06.2017

gcp Chartered Architects
 architecture project management sustainable design
 Suite 10, Conran 2
 Conran Office Park
 Crown Way
 Wansley
 Bristol BS30 8FJ
 T: 0117 9670288
 mail@gcparch.co.uk
 www.gcparch.co.uk

Project Title:
Elizabeth House
 4-7 Fulwood Place - London

Drawing Title:
Proposed Elevations and Sections

Drawn By: **TM** Date: **June 2017**
 Checked By: **JPL** Scale: **1:100 @ A1**

Drawing No: **17008/205** Rev: **E**

Status: **PLANNING**