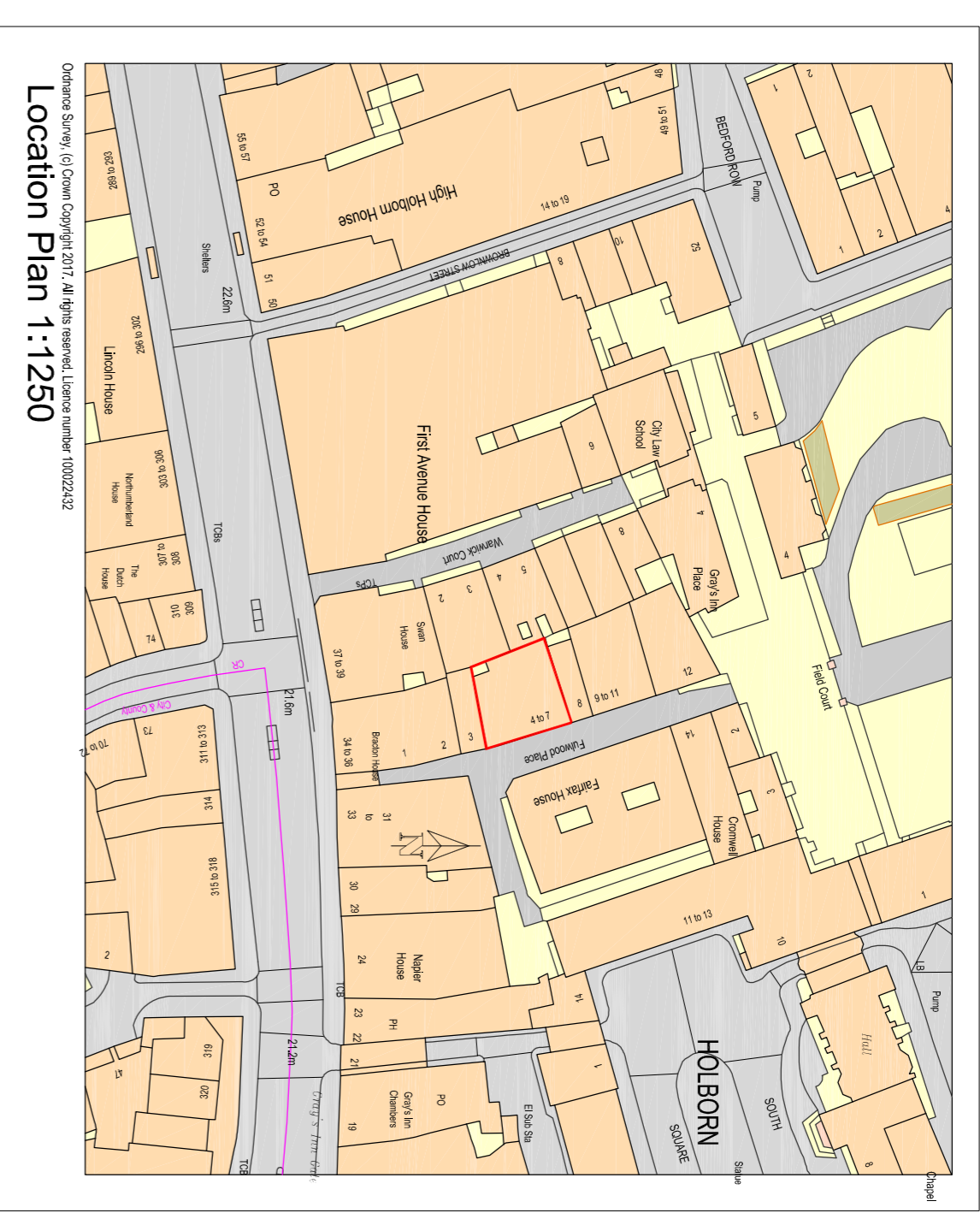
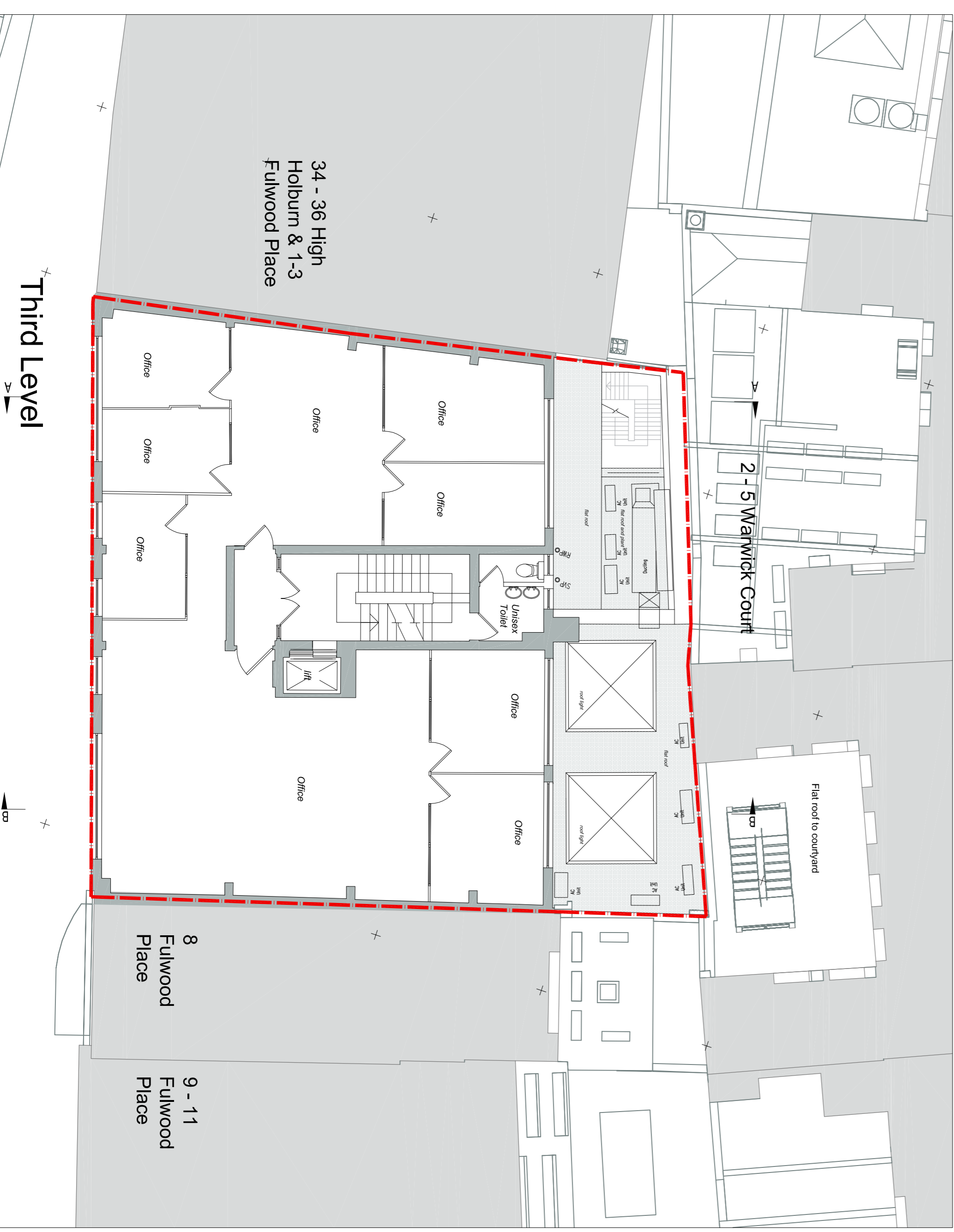
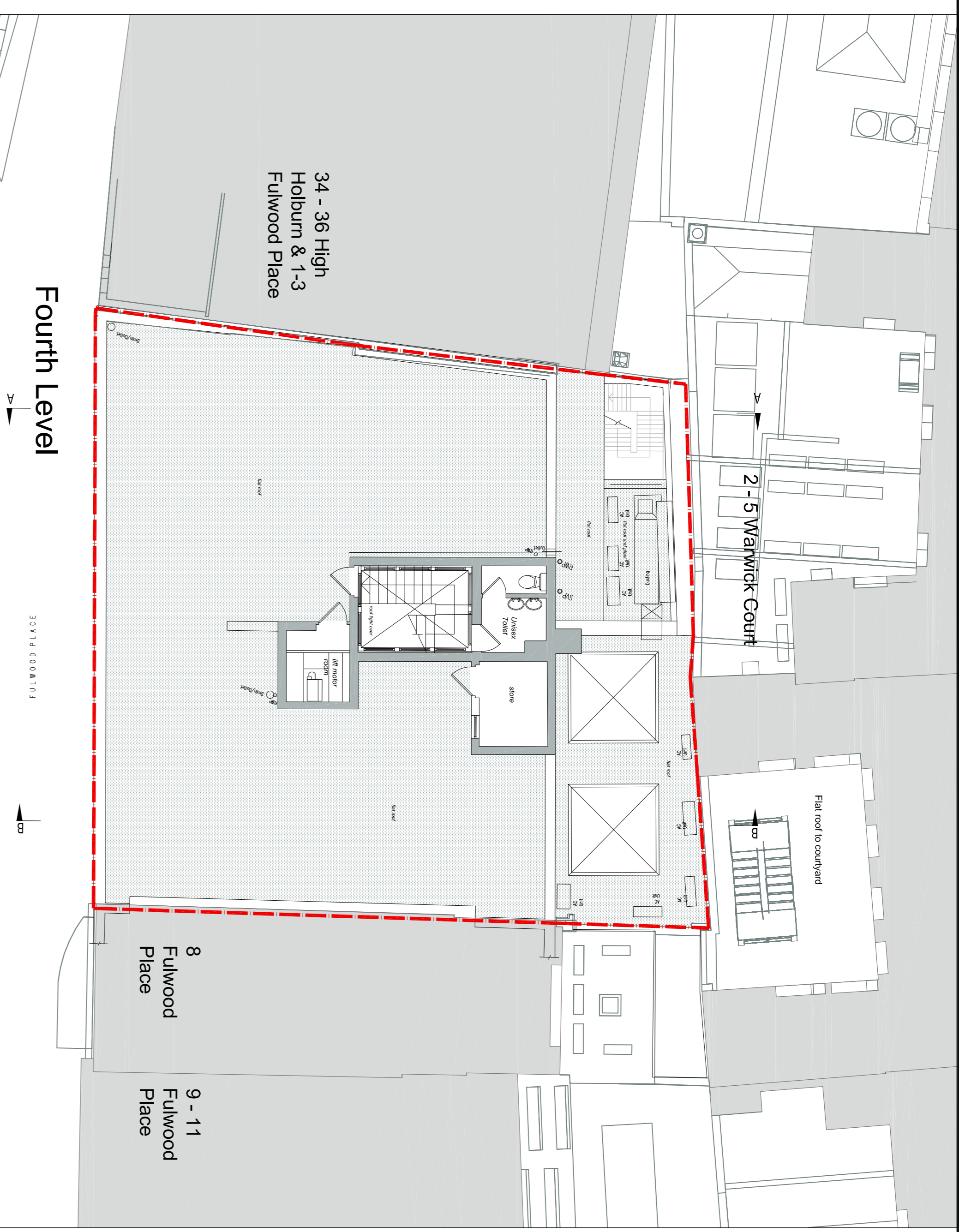


The drawings are prepared and used for the purposes of the permit application for the proposed development. The drawings are not to be used for any other purpose without the written consent of the architect. The architect is not responsible for any errors or omissions in the drawings or for any consequences arising from the use of the drawings. The architect is not responsible for any consequences arising from the use of the drawings.



Scale - 1:1250
0m 20m 40m 60m 80m 100m



Revision	Description	Rev. By	Date
B	Planning Submission		18.10.2017
A	Final Planning Submission		10.05.2017
1	Initial Planning Submission		10.05.2017

gcp Chartered Architects
 gcp Chartered Architects
 4-7 Fulwood Place - London
 Elizabeth House
 Third & Roof Plans

Drawn By: JPL
 Checked By: JPL
 Date: June 2017
 Scale: 1:1250 @ A1
 Drawing No: 17008/201
 Rev: B
 Soak: PLANNING