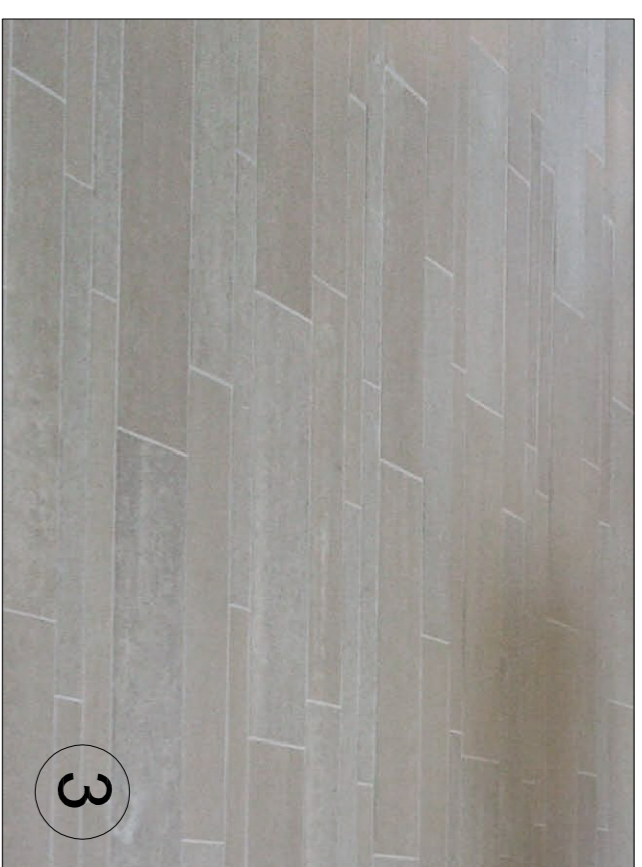


Legend

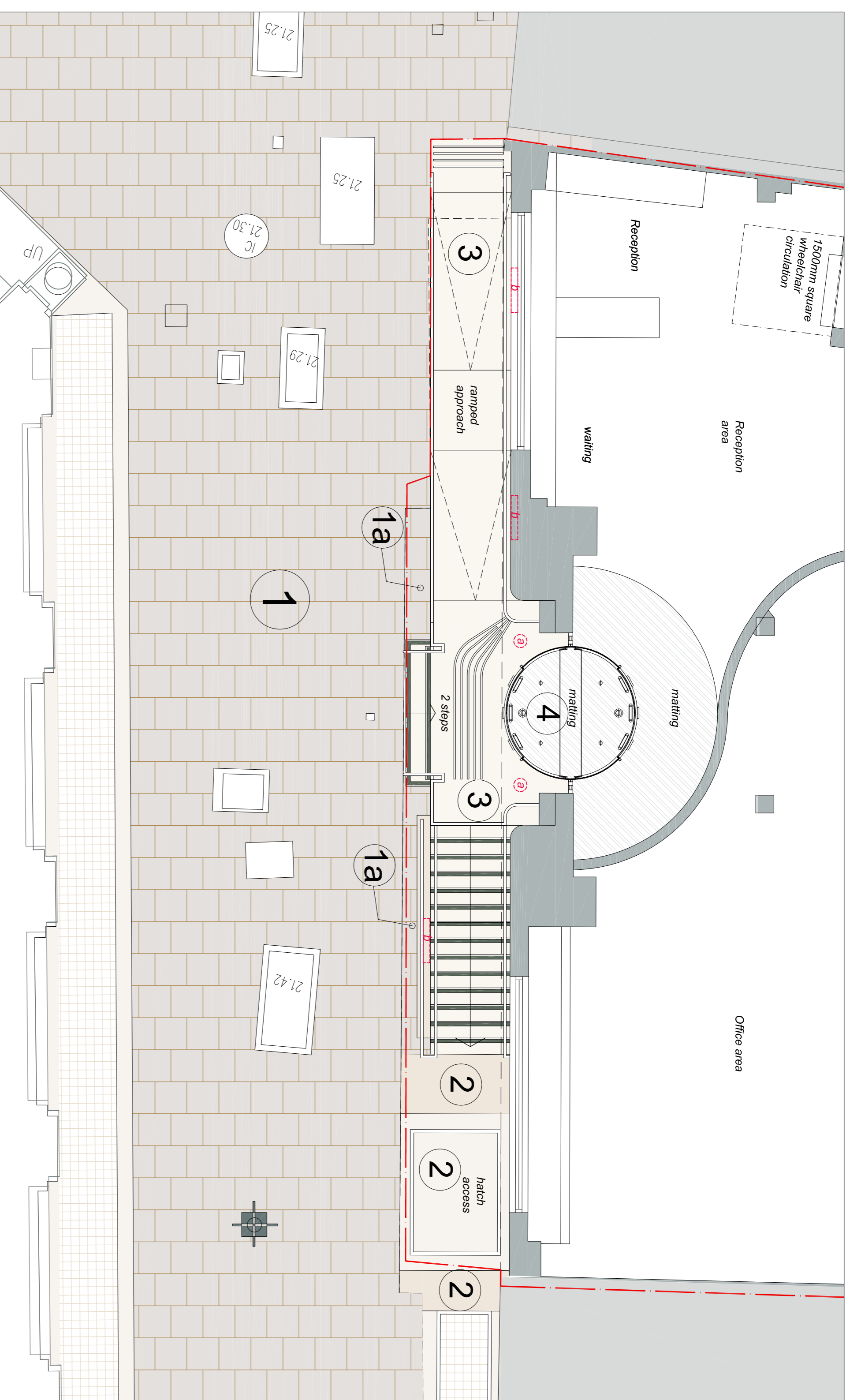
- 1 Existing grey / buff paving slabs laid with staggered joints
- 1a buff paving slabs laid with staggered joints
- 2 Existing grey / buff concrete self finish areas
- 3 Proposed steps, ramps and landings faced with porcelain stone effect tiles, using Solus Ceramics stonework - colour reference 'elent' - Code 3 LBG 503 - stone finish Ceramics Limestone stonework - colour reference 'helmo' - Code 3 LBG 505 - stone finish
- 4 Anti slip stainless steel raised strips into the tiling to form stop ends to the contrasting the strips stainless steel raised strips laid into the tiling to provide hazard warning surface for the visually impaired, at head and bottom of steps and ramp
- Proposed curved sliding glazed door lobby unit from Dorma
- (a) proprietary recessed lighting into existing soffit at the entrance
- (b) proprietary recessed step lights built into the existing external wall



proposed tiling pattern



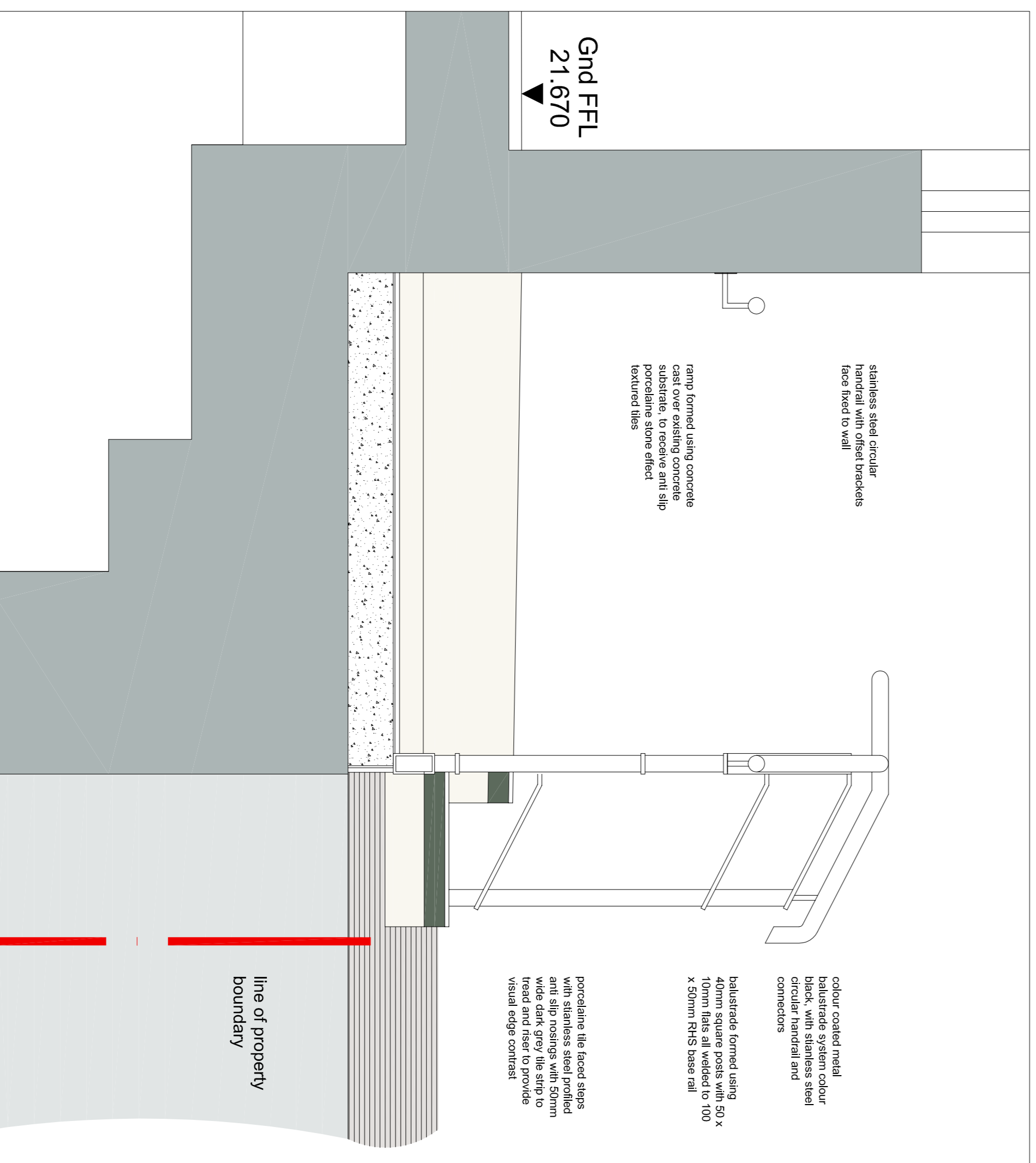
Entrance amendments CGI



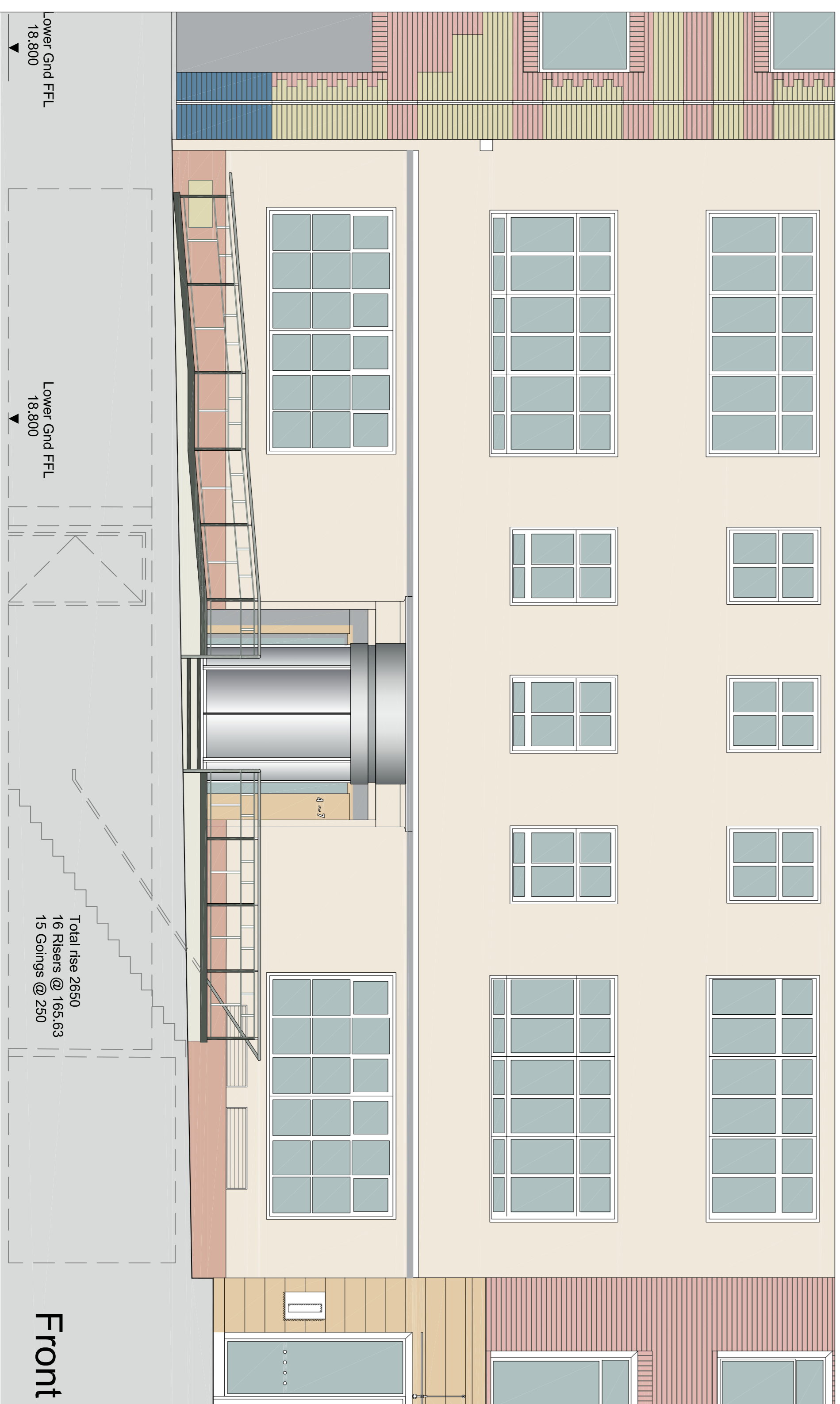
Ground floor plan extract - 1:50



Proposed curved sliding glazed door lobby unit from Dorma



section through ramp profile - 1:10



Front elevation - 1:50

This drawing is unapproved and may not be used for construction without the permission of gcp. gcp Chartered Architects Ltd. All drawings to be read in conjunction with the project brief and contract documents. It is the responsibility of the client to ensure that the project is completed in accordance with the contract documents. gcp Chartered Architects Ltd. is not responsible for any errors or omissions in this drawing. gcp Chartered Architects Ltd. is not responsible for any errors or omissions in this drawing. gcp Chartered Architects Ltd. is not responsible for any errors or omissions in this drawing.

Revision	Description	Rev. By	Date
A	Planning submission	-	10.10.2017
<p>gcp Chartered Architects</p> <p>gcp Chartered Architects Ltd 10, Colindale Avenue, Colindale, London NW9 1NS t: 020 7739 9000 e: info@gcparchitects.co.uk www.gcparchitects.co.uk</p> <p>Project Title: Elizabeth House 4-7 Friarwood Place - London</p> <p>Drawing Title: Proposed entrance area details</p> <p>Drawn By: RMS Date: Sept 2017 Checked By: IM Scale: 1:50 (0 @ A1)</p> <p>Drawing No: 17008/220 Rev: A</p> <p>Scale: PLANNING</p>			