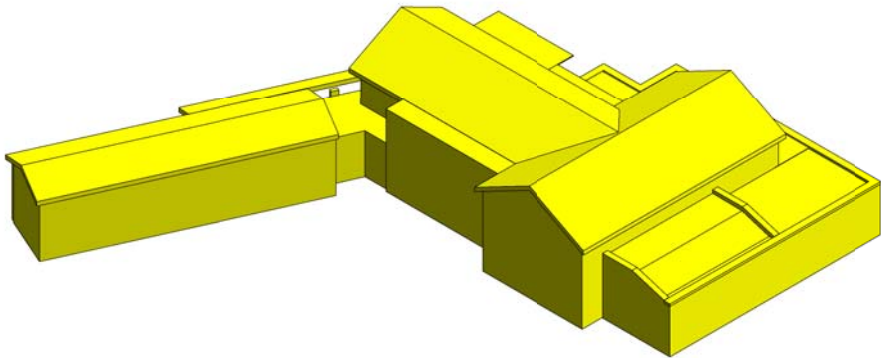


1 Existing Volume

VOLUME	1516 m³	(53537 ft³)
--------	---------	-------------



2 Proposed Volume

VOLUME	2103 m³	(74267 ft³)
--------	---------	-------------

General notes:
This drawing is copyright of KSR architects. This drawing must be read in conjunction with the Designer's Risk Assessment, specification and all other relevant documentation and drawings. KSR architects accept no liability for any expense, loss or damage of whatsoever nature and however arising from any variation made to this drawing or in the execution of the work to which it relates which has not been referred to them and their approval obtained.
Do not scale from this drawing or the digital data, only figured dimensions are to be used. For Planning refer to linear scale. Check all dimensions on site prior to carrying out any works - advise any discrepancy

Notes/Legends

Note: Volumes based on available drawings and proposed planning drawings.

For further information please refer to Z Brunel's planning statement.

Ammendments:
Roofs included in total volume calculation

D	Revised Planning	03/12/2017
C	Revised Planning	15/10/2017
B	Planning Amendments	04/08/2017
A	Planning Application	26/06/2017

Rev	Description	Date	Chd
-----	-------------	------	-----

© KSR architects

Stamp

PLANNING

Key Plan

KSRARCHITECTS
KSR Architects LLP
14 Gwendol Street
London W1V 0HQ
info@ksrarchitects.com
t +44 (0)20 7882 5000
www.ksrarchitects.com

Project:
THE WATER HOUSE

Title:
Volume Analysis of Existing and Proposed Schemes

Date:	10/10/17	Drawn By:	Author:	Checked:	Checked:
Scale:	Sheet: A1	Status:			

Project Ref:	Drawing No:	Revision:
17007	17007-8-060	D