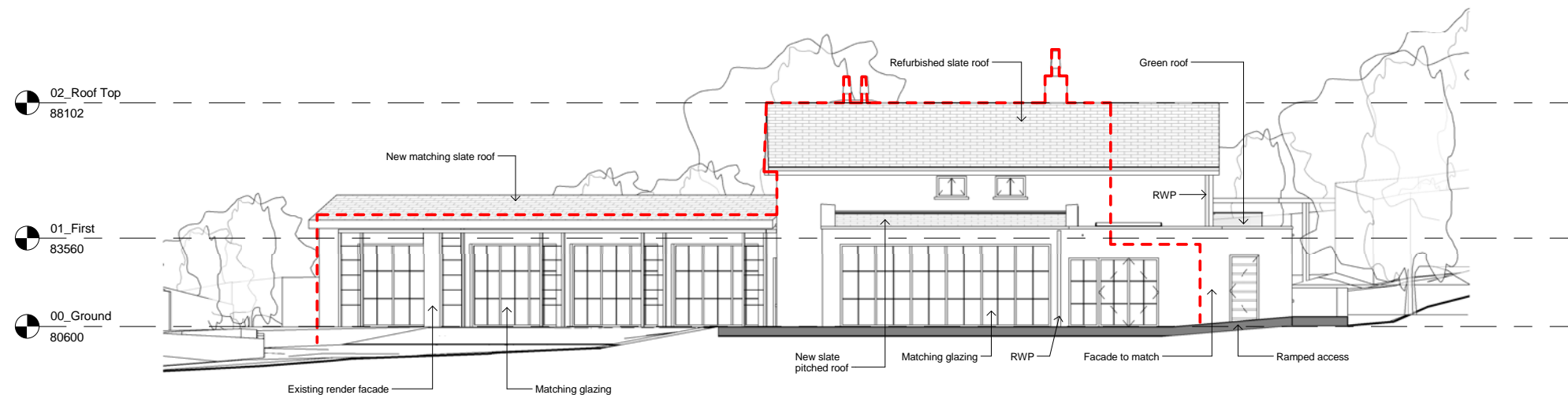


1 Proposed South Elevation
1:100



2 Proposed East Elevation
1:100



General notes:
This drawing is copyright of KSR architects. This drawing must be read in conjunction with the Designer's Risk Assessment, specification and all other relevant documentation and drawings. KSR architects accept no liability for any expense, loss or damage of whatsoever nature and however arising from any variation made to this drawing or in the execution of the work to which it relates which has not been referred to them and their approval obtained.
Do not scale from this drawing or the digital data, only figured dimensions are to be used. For Planning refer to linear scale. Check all dimensions on site prior to carrying out any works - advise any discrepancy

Notes/Legends

Key:

— Line of existing building

C	Revised Planning	01/10/2017
B	Revised Planning	10/10/2017
A	Planning Application	26/09/2017

Rev	Description	Date	Chd
-----	-------------	------	-----

By KSR architects
Stamp

PLANNING

Key Plan

KSRARCHITECTS
KSR Architects LLP
14 Grosvenor Street
London W1W 0ND
t +44 (0)20 7882 5000
e info@ksrarchitects.com
www.ksrarchitects.com

Project:
THE WATER HOUSE

Title:
Proposed Elevations - 1

Date: 03/04/17	Drawn By: HT	Checked: RM
----------------	--------------	-------------

Scale: 1:100	Sheet: A1	Status: Planning
--------------	-----------	------------------

Project Ref: 17007	Drawing No: 17007-P300	Revision: C
--------------------	------------------------	-------------