



EXISTING FIRST / SECOND FLOOR PLAN

FOUR BED APARTMENT:
FIRST / SECOND / THIRD FLOOR

FIRST: 44.8m²
SECOND: 45.8m²

Annotations:

NOTE:
ORIGINAL WIDE FLOORBOARDS
TO BE REMOVED CAREFULLY, RETAINED
AND SET ASIDE FOR RE-USE

OPENING UP WORKS HAVE ASCERTAINED
WHERE ORIGINAL FABRIC REMAINS.
MAJORITY OF PARTITIONS AND CEILINGS
ARE OF MODERN CONSTRUCTION,
EXCEPT WHERE NOTED

General Annotations:

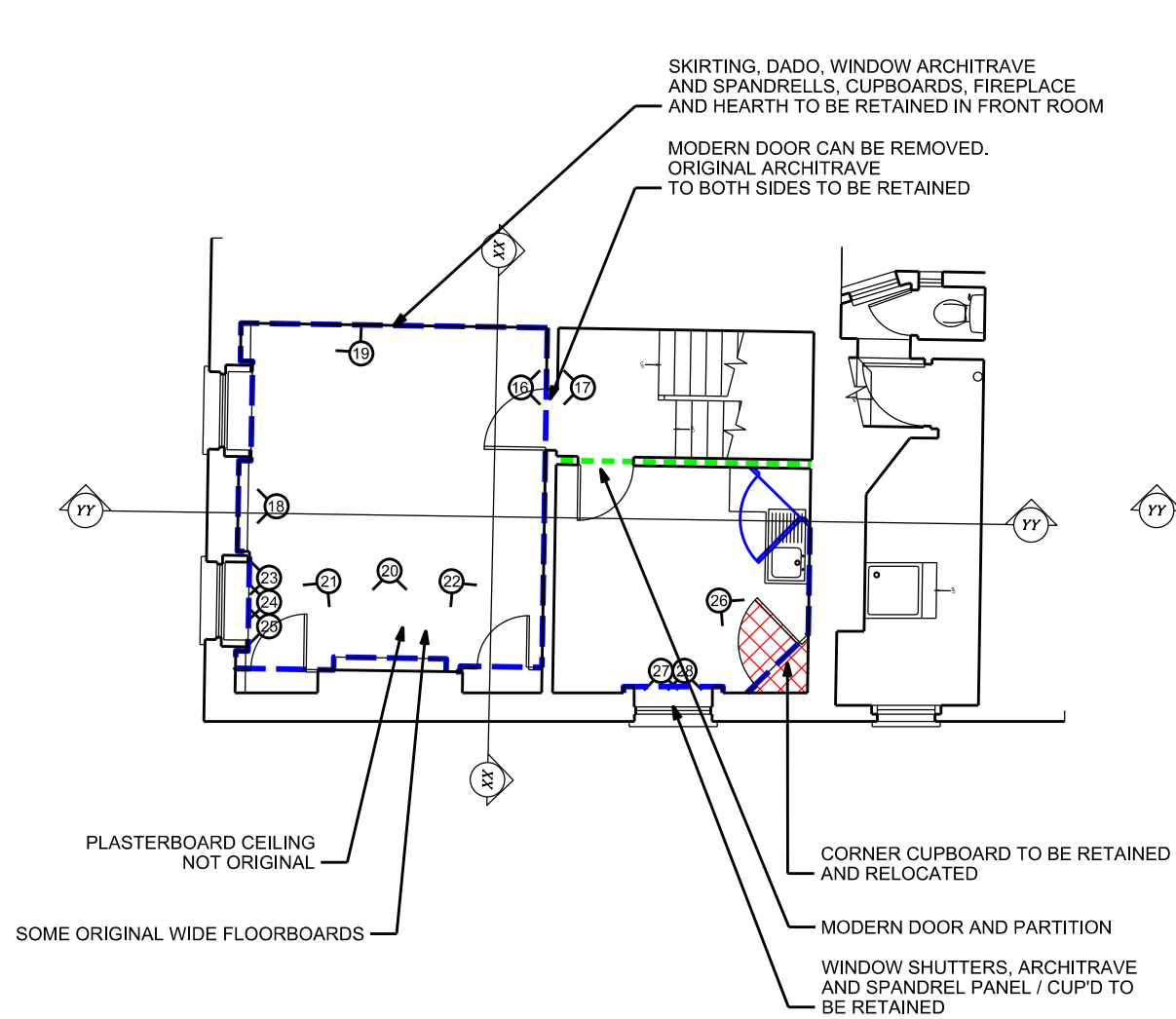
⊗ REFERS TO PHOTOGRAPHS ON THE HERITAGE
SURVEY AND LBC INSPECTION RECORDS OF
29TH SEPTEMBER 2015.

FABRIC HIGHLIGHTED THIS: - - - - -

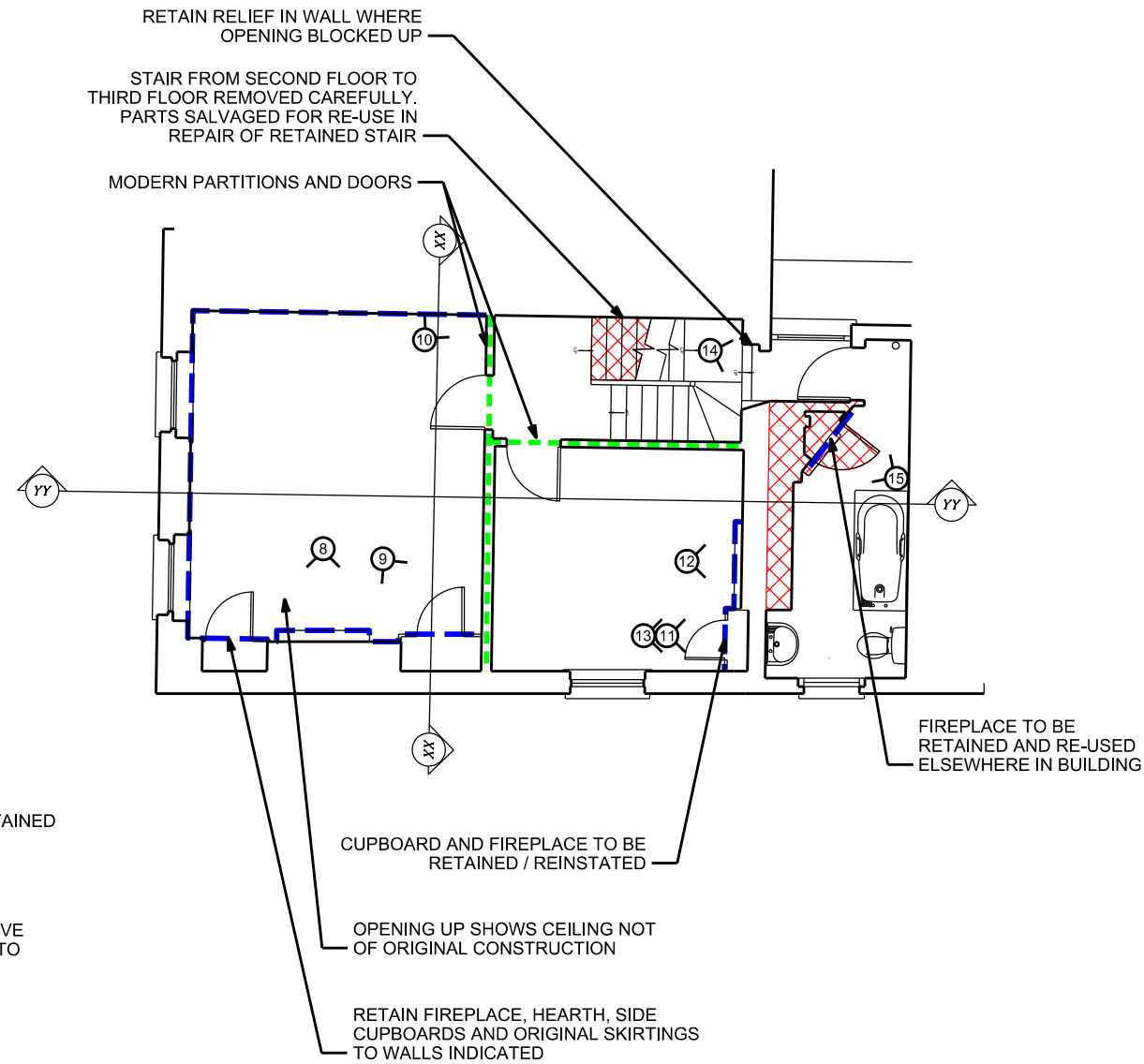
MODERN CONSTRUCTION, NOT ORIGINAL FABRIC

FABRIC HIGHLIGHTED THIS: - - - - -

HISTORIC FABRIC TO BE RETAINED WHERE POSSIBLE



FIRST FLOOR



SECOND FLOOR

<p>Project Manager Heritage Surveys Ltd.</p> <p>Heritage Surveys Limited Unit 114, Carlton Road South Croydon Surrey CR2 0BS www.heritage-surveys.com</p>				<p>PROJECT 39 Tottenham Street</p> <p>TITLE EXISTING FIRST / SECOND FLOOR PLAN BUILDING FABRIC RECORD</p> <p>CLIENT The London Borough of Camden</p>			<p>Jmarchitects</p> <p>1st Floor Ashley House 12 Great Portland Street London W1W 8QN T: 0207 580 5330 F: 0207 436 5348 lon@jmarchitects.net www.jmarchitects.net</p>		
<p>REV. DESCRIPTION</p> <p>F REVISED PLANNING ISSUE, DETAILED NOTES ADDED</p> <p>E PLANNING ISSUE, ANNOTATIONS ADDED.</p> <p>D PLANNING ISSUE</p>	<p>DATE</p> <p>04/04/17</p> <p>13/03/17</p> <p>14/06/16</p>	<p>GS</p> <p>GS</p> <p>GS</p>	<p>DL</p> <p>DL</p> <p>DL</p>	<p>JOB No.</p> <p>5563</p> <p>SCALE</p> <p>1:100@A3</p> <p>STATUS</p> <p>PLANNING</p>	<p>DRAWING No.</p> <p>5563- E(1)004</p> <p>DRAWN BY</p> <p>GS</p> <p>DATE</p> <p>09/10/2015</p>	<p>REVISION</p> <p>F</p> <p>CHECKED BY</p> <p>DL</p>			