



PROPOSED BASEMENT / GROUND FLOOR PLAN

ONE BED APARTMENT:  
BASEMENT / GROUND

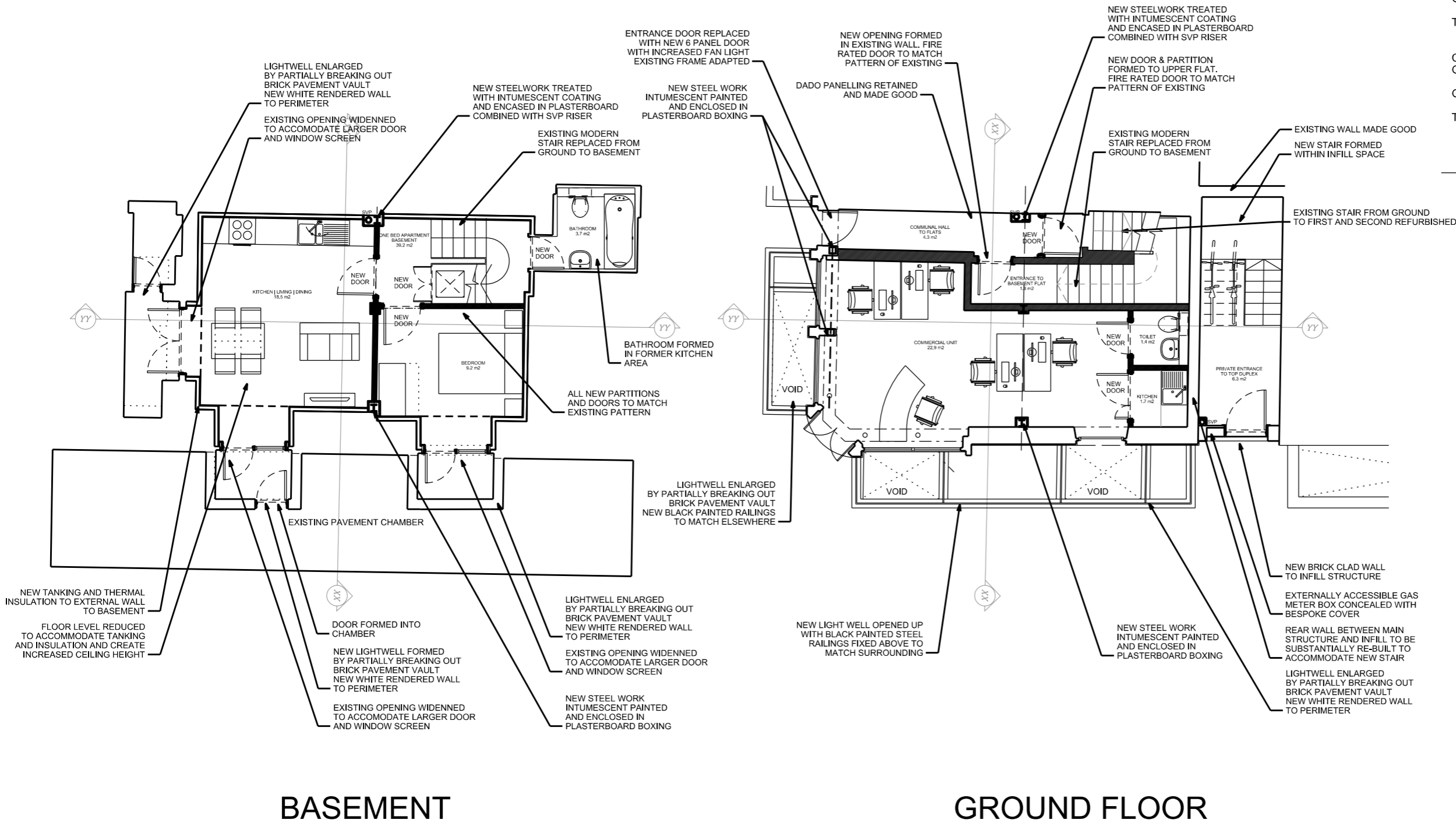
BASEMENT: 39.2m<sup>2</sup>  
GROUND: 1.8m<sup>2</sup>

TOTAL: 41m<sup>2</sup>

COMMERCIAL UNIT:  
GROUND FLOOR

GROUND: 25.5m<sup>2</sup>

TOTAL: 25.5m<sup>2</sup>



REV.	DESCRIPTION	DATE	DRN BY	CKD BY
G	UPDATED PLANNING ISSUE, NOTES EXTENSIVELY REVISED	04/04/17	GS	DL
F	PLANNING ISSUE	14/06/16	GS	DL
E	PLANNING ISSUE, ANNOTATIONS ADDED.	13/03/17	GS	DL

**Project Manager**  
Heritage Surveys Ltd.

Heritage Surveys Limited  
Unit 114, Carlton Road  
South Croydon  
Surrey  
CR2 0BS  
www.heritage-surveys.com

PROJECT  
**39 Tottenham Street**

TITLE  
**PROPOSED BASEMENT / GROUND PLAN**

CLIENT  
**The London Borough of Camden**

JOB No. <b>5563</b>	DRAWING No. <b>5563- S(0)003</b>	REVISION <b>G</b>
SCALE <b>1:100@A3</b>	DRAWN BY <b>GS</b>	CHECKED BY <b>DL</b>
STATUS <b>PLANNING</b>	DATE <b>07/07/2015</b>	

**jmarchitects**

1st Floor  
Ashley House  
12 Great Portland Street  
London  
W1W 8QN

T: 0207 580 5330  
F: 0207 436 5348  
lon@jmarchitects.net  
www.jmarchitects.net