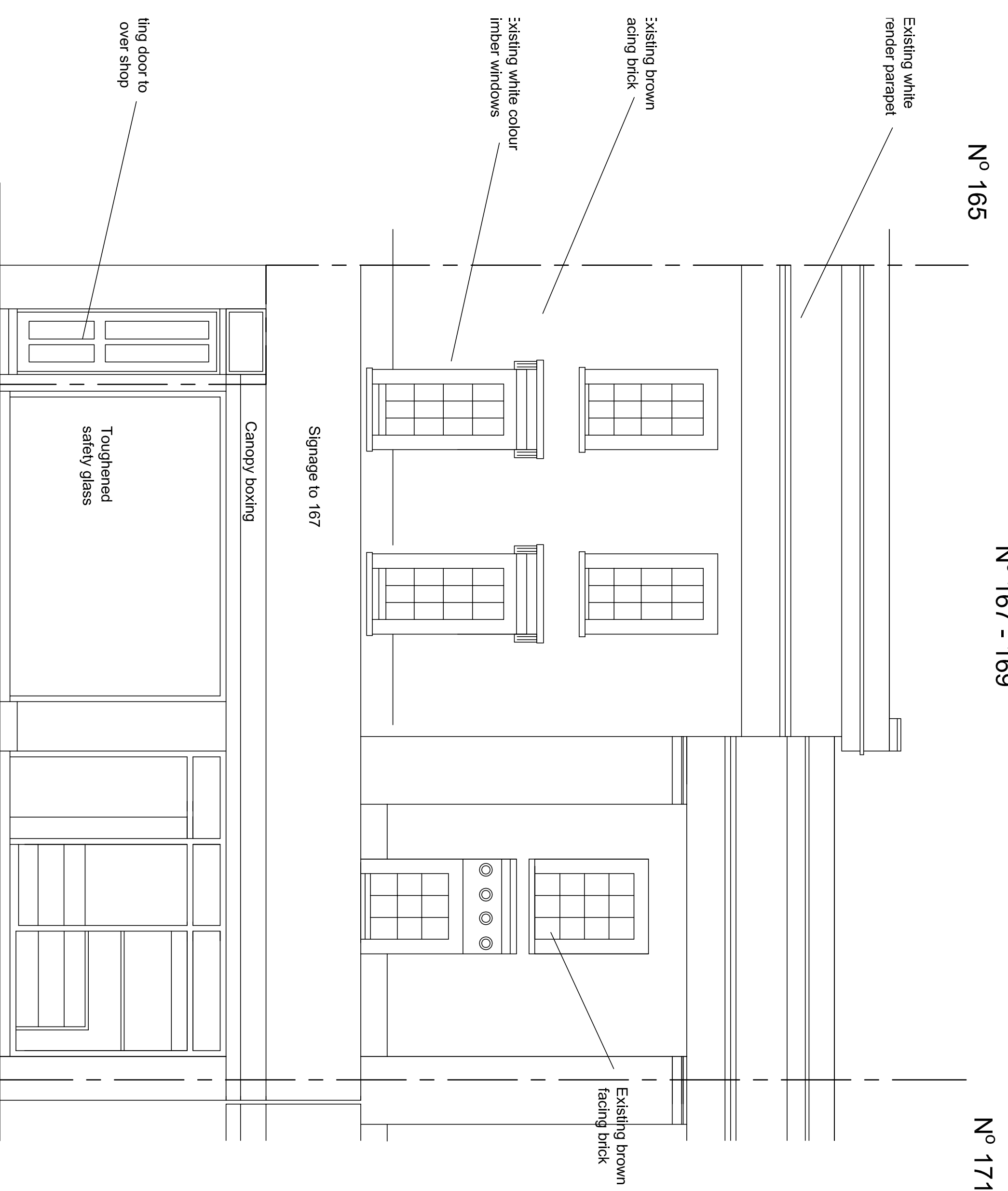
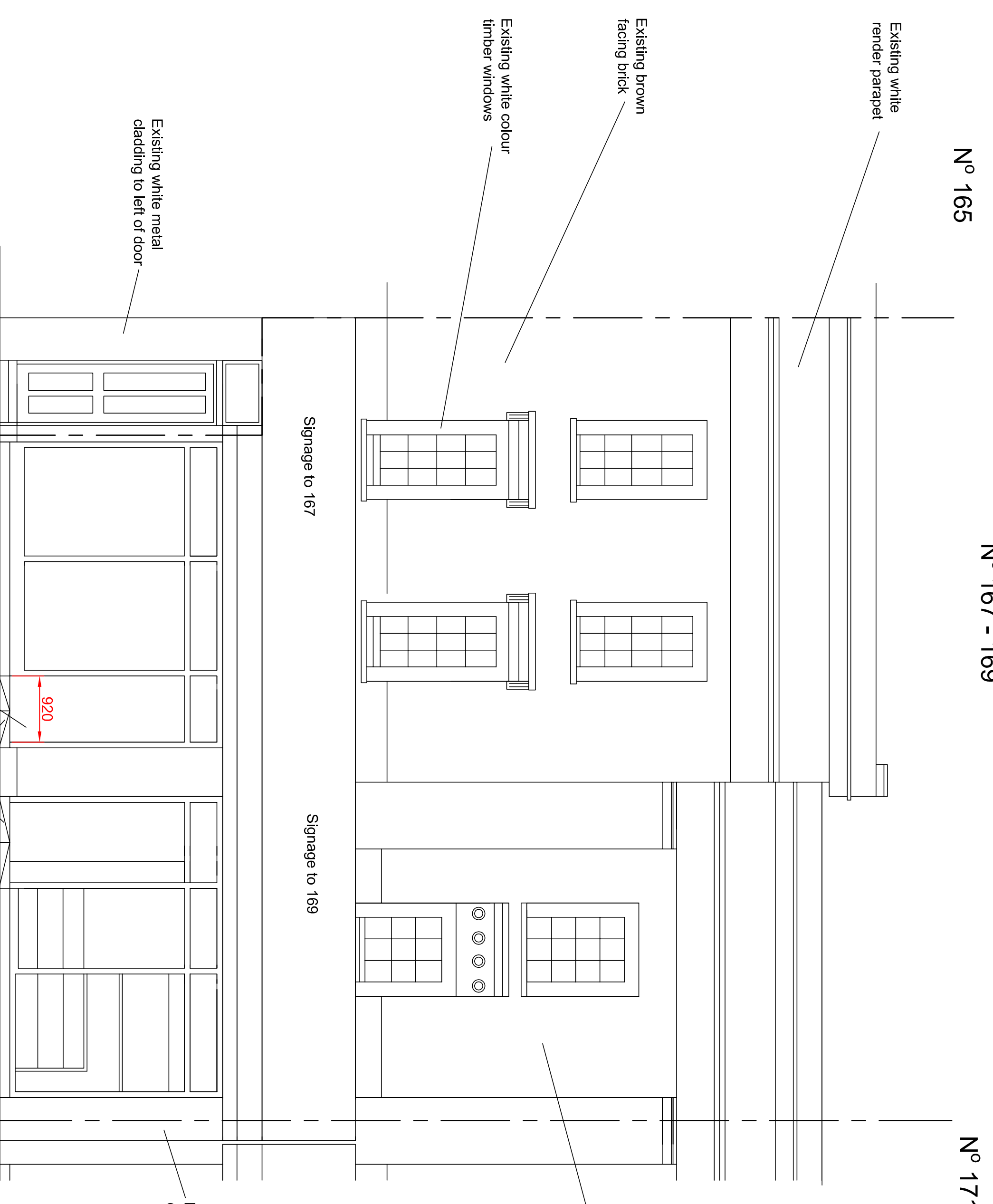


GENERAL NOTES  
 DRAWING CAN BE SCALED FOR PLANNING PURPOSES ONLY BUT IF IN ANY DOUBT ABOUT A DIMENSION OR ANY OF THE DRAWN INFORMATION PLEASE ASK CDRB ARCHITECTS LTD.



**Existing Front Elevation**  
**[Facing Kentish Town Road]**  
 Scale 1:50 @ A1



**Proposed Front Elevation**  
**[Facing Kentish Town Road]**  
 Scale 1:50 @ A1

- Amendments include:
- 1) Removal of existing shutters notes:
  - 2) Addition of second entrance ramp
  - 3) Addition of non slip surface note to ramp
  - 4) Removal of anti social space in front of shopfront by moving it forward flush with front of building.

**PLANNING SUBMISSION**

ref	date	by	proj
A	20/11/17	Revised AS Per Planners Comments 16/11/17	CDR



cdrb architects ltd  
 8 Berkeley House,  
 Kentish Town,  
 London NW1 8PD  
 020 7611 1117  
 CDRB

job title  
 Change of Use to A5 from A1 at 167 -169  
 Kentish Town Road, London | NW1 8PD

drawing title  
 Existing and Proposed Front Elevation

scale	drawn by	date	checked by
1:50 @ A1	TP	March 2017	CDR
job no.	drawing no.	revision	
1545	AL/01/05	B	

