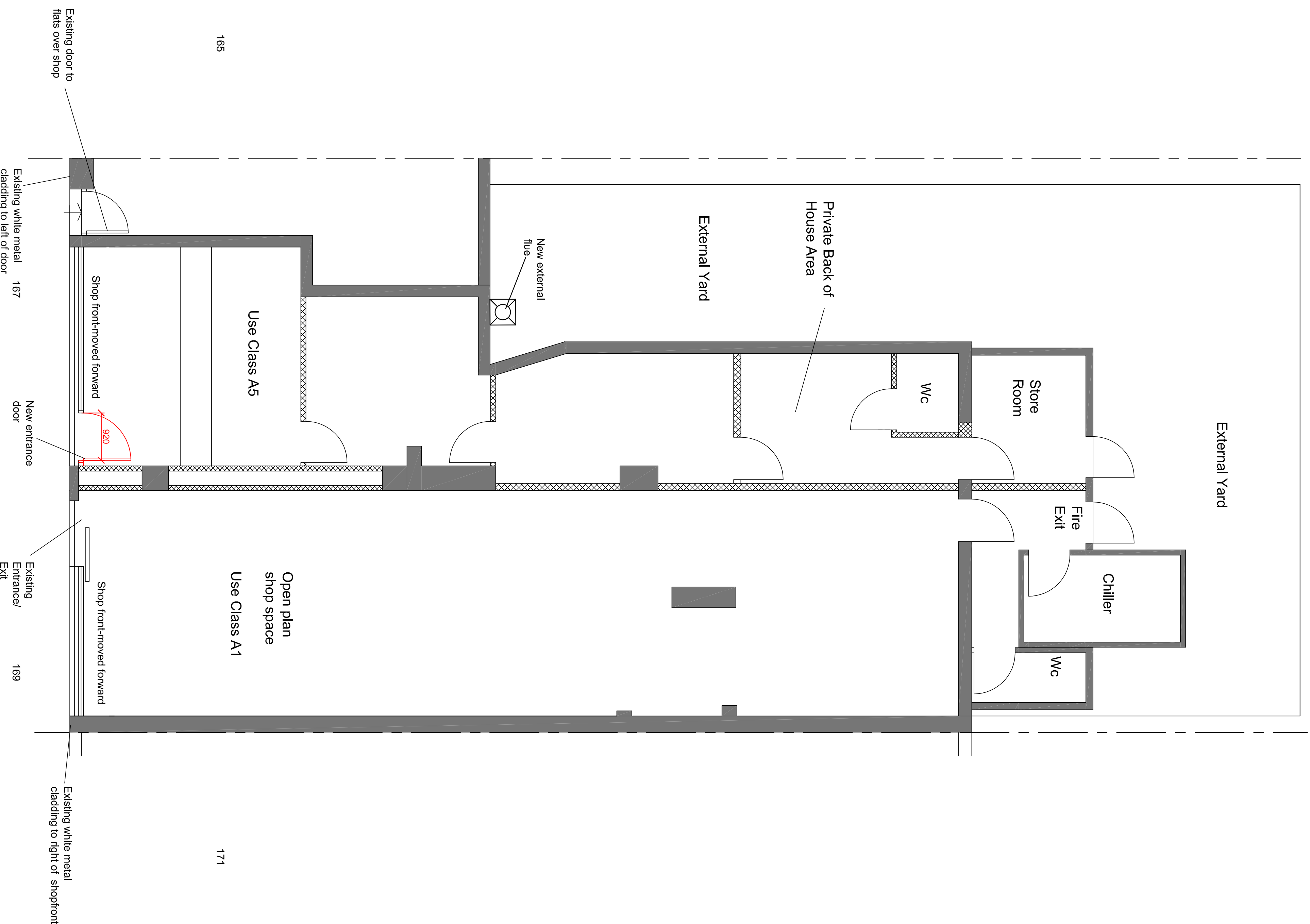


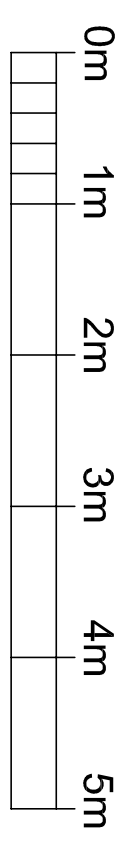
GENERAL NOTES  
 DRAWING CAN BE SCALED FOR PLANNING PURPOSES ONLY BUT IF IN ANY DOUBT ABOUT A DIMENSION OR ANY OF THE DRAWN INFORMATION PLEASE ASK CDRB ARCHITECTS LTD.



165

171

Proposed Ground Floor Plan  
 Scale 1:50 @ A1



Amendments include:  
 1) Existing white vertical metal cladding annotated on drawing.

Revision C: Additional Information and Amendments added following Planners comments on 01.12.17 12.12.17 CR

PLANNING SUBMISSION

ref	date	description	by	checked by
A	20/11/17	Revised A5 Per Planners Comments 16/11/17	CR	CR

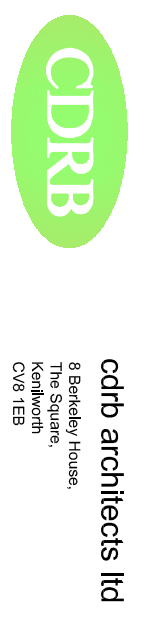
job title	job no.	drawing no.	revision
Change of Use to A5 from A1 at 167 -169 Kentish Town Road, London   NW1 8PD	1545	AL/1710	C

drawing title	scale	drawn by	date	checked by
Existing Ground Floor Plan	1:50 @ A1	CR	20/18	CDR

job title	job no.	drawing no.	revision
Change of Use to A5 from A1 at 167 -169 Kentish Town Road, London   NW1 8PD	1545	AL/1710	C



cdrb architects ltd  
 8 Berkeley House,  
 Kentish Town,  
 London NW1 8PD