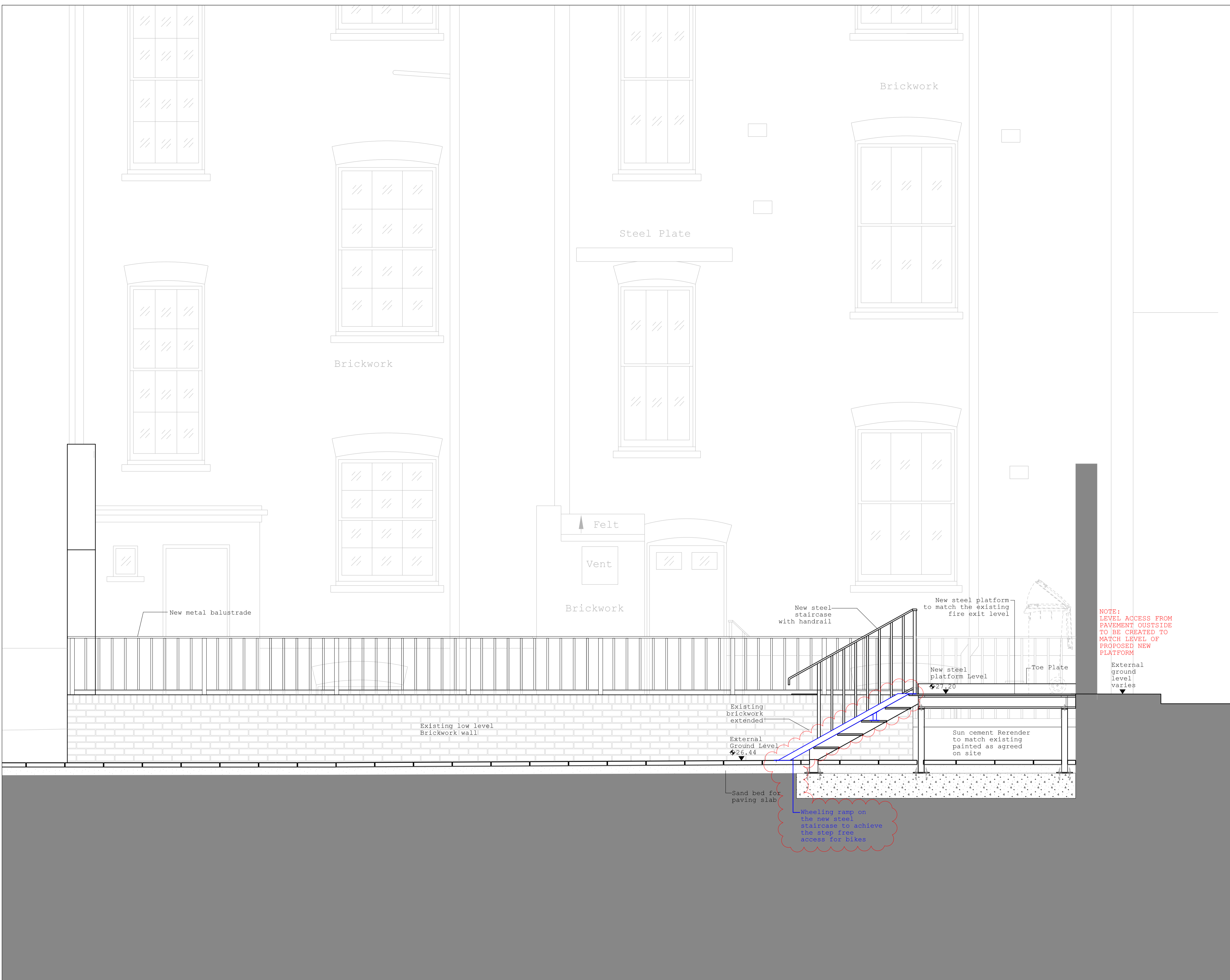
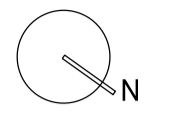


Notes

- All dimensions to be checked on site
- Do not scale off this drawing
- All dimensions are shown in mm unless otherwise stated
- Refer to drawing issue sheet for purpose of issue
- If in doubt ask
- © Lewelyn Davies

Key plan



P2 For Planning Authority	30.11.17	YC
P1 For Planning Authority	30.05.17	YC
No. Description	Date	By

Structural Consultant	Services Consultant
ACCOM	ARUP
Project Manager	Cost Consultant
-	-

Project Title
The Roger Williams Building
 69-75 Cheries Mews, London
 WC1E 6HX
 Client
 University College London
 Hospitals Charity (UCLHC)

Drawing Title
Non Material Amendments
 Proposed Section D-D

Project Number	Drawing Number	Revision
LD15 077.00	CM_NMA_S_DD	P2

Scale @ A1
 1:20 @ A1
 Date
 30.05.2017

Architects
LLEWELYN DAVIES
 3rd floor | 3-5 Rathbone Place | London | W1T 1HJ
 T +44(0)20 7907 7900 | E london@ldavies.com
 www.ldavies.com