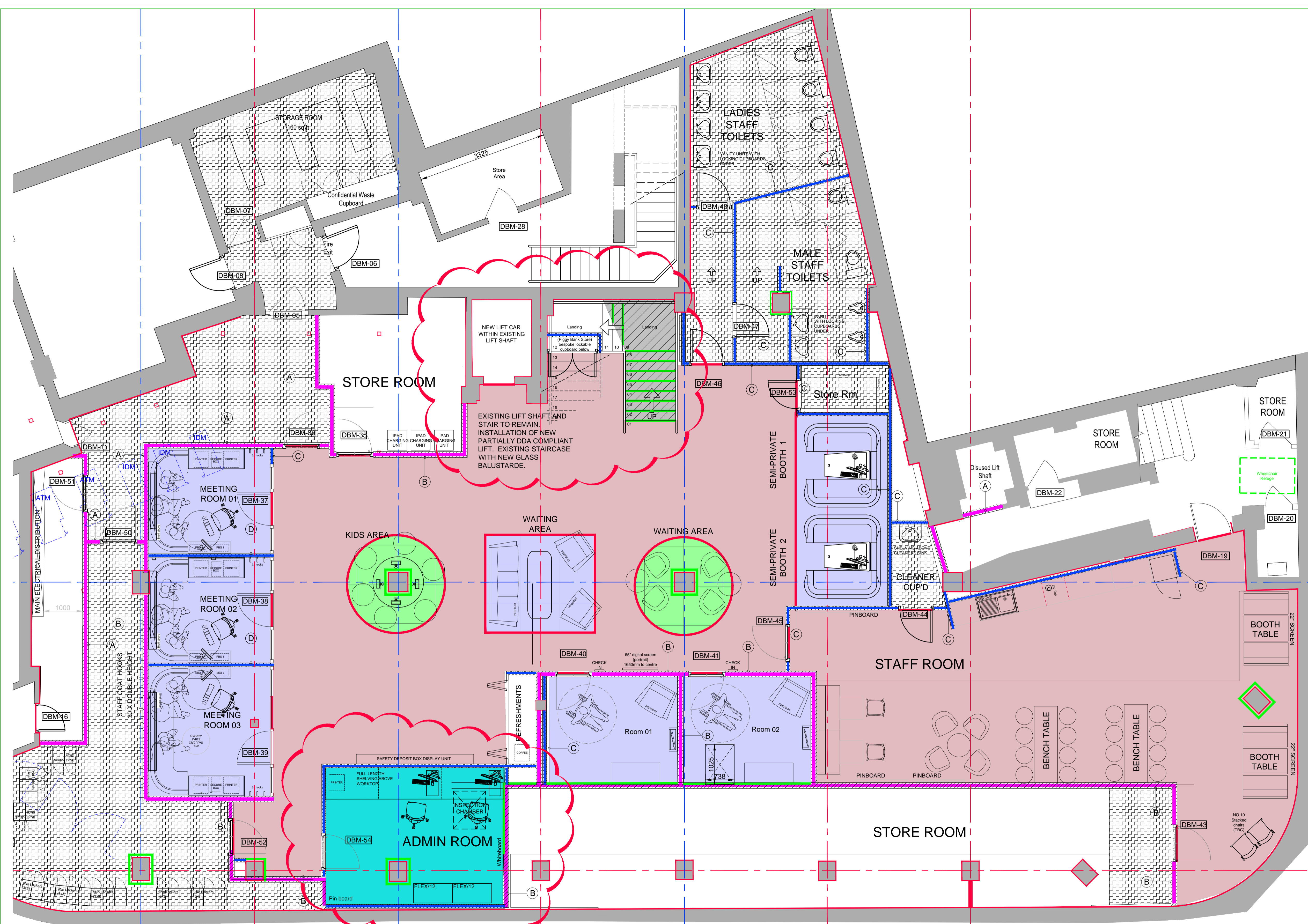


FLOOR FINISHES KEY

- Bolon Artisan Malachite 103573 + Acoustic backing to make it 5mm thick
- SOLUS CERAMICS 6 mm JR0621 High Wycombe Matt
- Stairs Risers SOLUS CERAMICS 6mm JR0622 Higham Ferrers Matt
- FORBO TCT5660/1 INLINE HALIFAX JUTE
- FORBO Allura Flex : Deep Country Oak X 5mm thick
- BOH 01 - Back of House Vinyl Polyfor Vogue Ultra - 4770 Woodland Grey
- FF16 - Staffroom flooring Carpet -TCT 5092 Azzuri Halifax loop
- Existing Finished Retained
- Transition Strips Gradus ETR302UFO DWG Ref: ST-K21-01 Rev B



REV	DATE	REVISION	INITIALS
LLOYDS BANKING GROUP			
ALL DIMENSIONS TO BE VERIFIED PRIOR TO COMMENCING WORK. DRAWING TO BE READ IN CONJUNCTION WITH PROJECT SPECIFICATIONS.			
THIS DRAWING IS THE PROPERTY OF LLOYDS BANKING GROUP AND COPYRIGHT IS RESERVED BY THEM. THE DRAWING IS ISSUED ON CONDITION THAT IT IS NOT COPIED OR DISCLOSED BY OR TO ANY UNAUTHORISED PERSONS WITHOUT PRIOR CONSENT IN WRITING TO LLOYDS BANKING GROUP - GROUP PROPERTY. ALL MODIFIED DRAWINGS SHOULD BE RETURNED TO LLOYDS BANKING GROUP.			
GROUP PROPERTY			
BRISTOL - PO Box 112, Canons House, Canons Way, BRISTOL, BS99 7LB EDINBURGH - Sighthill South, 12 Bankhead Crossway South, EDINBURGH, EH11 4EN HALIFAX - Trinity Road, HALIFAX, West Yorkshire, HX1 2RG			
PROJECT ADDRESS	SCALE		DATE
Halifax 118-132, New Oxford Street West End LONDON, WC1A 1HL	A1 - 1:50 A3 - 1:100		06/12/2017
DRAWING DESCRIPTION	DRAWN BY		REVISION
Basement Plan Floor Finishes	PW		-
DRAWING NUMBER	50941725-AR02-B1-0601		