

Tottenham Street

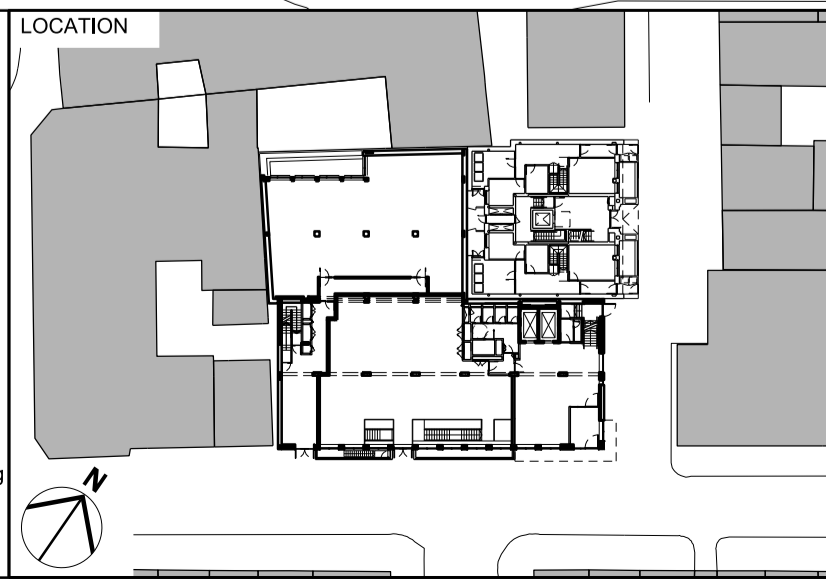
Tottenham Mews

KEY	REV	DATE
	P01	08/12/17 Issue for Planning

CONSULTANTS	
CLIENT:	WESTBROOK PARTNERS
CONTRACTOR:	-
STRUCTURAL ENGINEER:	HEYNE TILLET STEEL
MECHANICAL ENGINEER:	THORNTON REYNOLDS / GREEN BUILD
COST CONSULTANT:	LESLIE CLARK / CORE FIVE
PROJECT MANAGER:	RADCLIFFES CC
FIRE ENGINEER:	AFFINITY FIRE / FIRE RISK SOLUTIONS
APPROVED INSPECTOR:	BRCS
PLANNING CONSULTANT:	DP9

NOTE	
1. Do not scale from this drawing.	
2. All dimensions to be checked on site by the contractor and such dimensions to be his responsibility.	
3. Report all drawing errors, omissions and discrepancies to the architect.	
4. This document may be issued in an uncontrolled CAD format to enable others to use it as background information to make alterations and/or additions. In that instance the file will be accompanied by a PDF version. It is for those making such alterations and additions to ensure that they make use of current background information.	
AHMM Ltd accepts no liability for any such alterations or additions to the background information or arising out of changes to background information which occur prior to alterations of additions being made.	

LOCATION



ALLFORD HALL MONAGHAN MORRIS					
ARCHITECTS Ltd MORELANDS, 5-23 OLD STREET LONDON EC1V 9HL TEL 020 7251 5261 FAX 020 7251 5123 WEB WWW.AHMM.CO.UK					
job title ARTHUR STANLEY HOUSE					
drawing title / location FIRST FLOOR PLAN EXISTING PLAN					
drawn by LV	checked GH	scale 1:100@A1; 1:200@A3	status PLANNING		
project 15068	zone	source	classification	drawing no.	revision
				(01)_P101	P01