



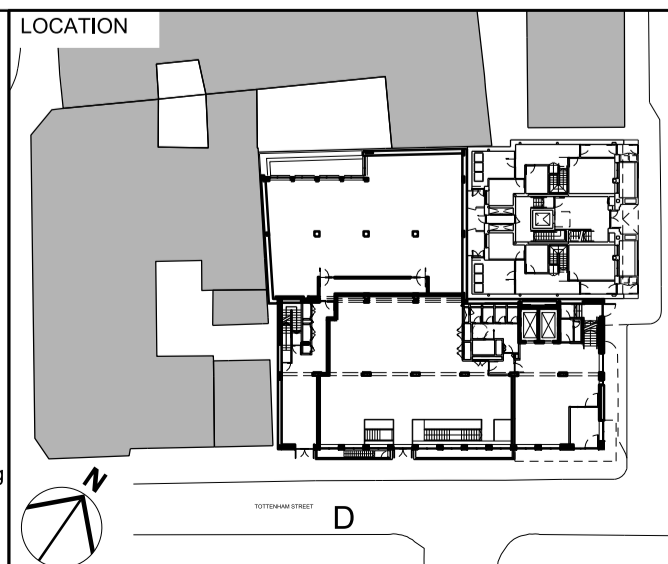
52 TOTTENHAM ST.      ARTHUR STANLEY HOUSE      TOTTENHAM MEWS

KEY

REV	DATE	DESCRIPTION
P01	08/12/17	Issue for Planning

CONSULTANTS	
CLIENT:	WESTBROOK PARTNERS
CONTRACTOR:	-
STRUCTURAL ENGINEER:	HEYNE TILLET STEEL
MECHANICAL ENGINEER:	THORNTON REYNOLDS / GREEN BUILD
COST CONSULTANT:	LESLIE CLARK / CORE FIVE
PROJECT MANAGER:	RADCLIFFES CC
FIRE ENGINEER:	AFFINITY FIRE / FIRE RISK SOLUTIONS
APPROVED INSPECTOR:	BRCS
PLANNING CONSULTANT:	DP9

**NOTE**  
 1. Do not scale from this drawing.  
 2. All dimensions to be checked on site by the contractor and such dimensions to be his responsibility.  
 3. Report all drawing errors, omissions and discrepancies to the architect.  
 4. This document may be issued in an uncontrolled CAD format to enable others to use it as background information to make alterations and/or additions. In that instance the file will be accompanied by a PDF version. It is for those making such alterations and additions to ensure that they make use of current background information.  
 AHMM Ltd accepts no liability for any such alterations or additions to the background information or arising out of changes to background information which occur prior to alterations of additions being made.



<b>ALLFORD HALL MONAGHAN MORRIS</b>					
ARCHITECTS Ltd MORELANDS, 5-23 OLD STREET LONDON EC1V 9HL TEL 020 7251 5261 FAX 020 7251 5123 WEB WWW.AHMM.CO.UK					
job title <b>ARTHUR STANLEY HOUSE</b>					
drawing title / location <b>PROPOSED GA ELEVATION SOUTH ELEVATION</b>					
drawn by LV	checked GH	scale 1:100@A1; 1:200@A3	status PLANNING		
project 15068	zone	source	classification	drawing no. revision (00)_P201 P01	