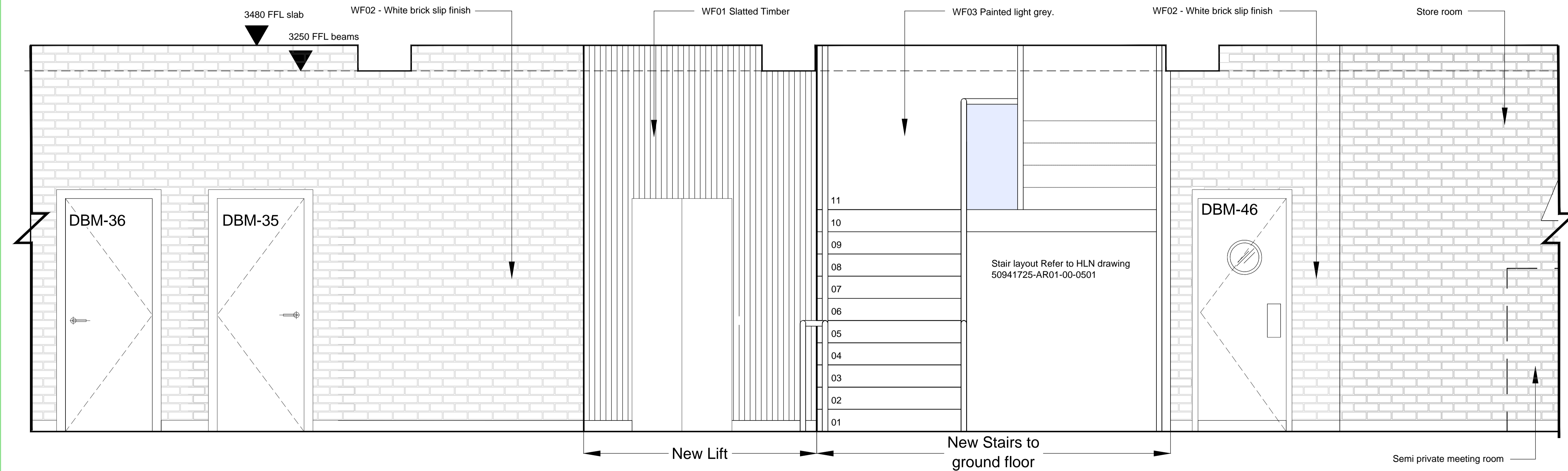


Internal Elevation 9 - Safety Deposit / Inspection rooms



Internal Elevation 10 - Access to BOH, Customer Lift/Stair and Access to Staff Toilets

REV	DATE	REVISION	INITIALS
D	03.08.2017	PLANNING ISSUE	RA

LLOYDS BANKING GROUP
 ALL DIMENSIONS TO BE VERIFIED PRIOR TO COMMENCING WORK. DRAWING TO BE READ IN CONJUNCTION WITH PROJECT SPECIFICATIONS.
 THIS DRAWING IS THE PROPERTY OF LLOYDS BANKING GROUP AND COPYRIGHT IS RESERVED BY THEM. THE DRAWING IS ISSUED ON CONDITION THAT IT IS NOT COPIED OR DISCLOSED BY OR TO ANY UNAUTHORISED PERSONS WITHOUT PRIOR CONSENT IN WRITING TO LLOYDS BANKING GROUP - GROUP PROPERTY. ALL MODIFIED DRAWINGS SHOULD BE RETURNED TO LLOYDS BANKING GROUP.

GROUP PROPERTY
 BRISTOL - PO Box 112, Canons House, Canons Way, BRISTOL, BS99 7LB
 EDINBURGH - Sighthill South, 12 Bankhead Crossway South, EDINBURGH, EH11 4EN
 HALIFAX - Trinity Road, HALIFAX, West Yorkshire, HX1 2RG

PROJECT ADDRESS	SCALE
Halifax 118-132, New Oxford Street West End LONDON, WC1A 1HL	A1 - 1:50 A3 - 1:100
DRAWING DESCRIPTION Basement Floor Plan Internal Elevation Sheet 1 PLANNING	DATE 15:05:2017
DRAWING NUMBER 50941725-AR01-BM-0201-PL	DRAWN BY PW
	REVISION D