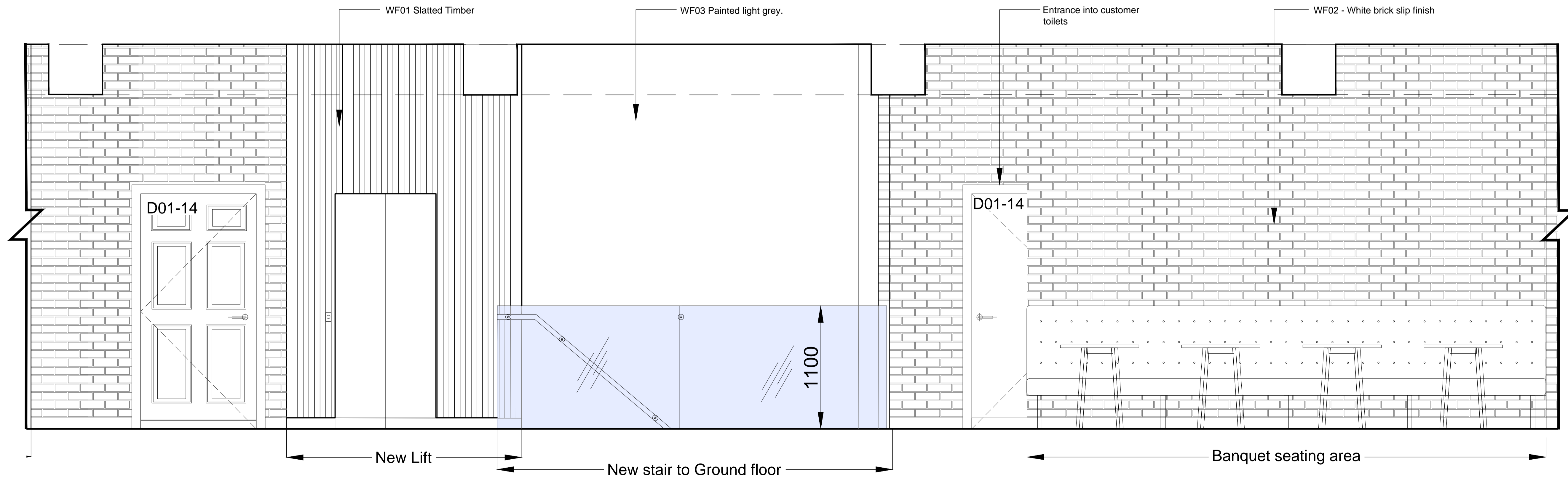


Internal Elevation 6 - Living room, Dining room and R.A.R



Internal Elevation 7 - Customer Lift / Stairs and Banquet seating

D	03.08.2017	PLANNING ISSUE	RA
REV	DATE	REVISION	INITIALS

LLOYDS BANKING GROUP

ALL DIMENSIONS TO BE VERIFIED PRIOR TO COMMENCING WORK. DRAWING TO BE READ IN CONJUNCTION WITH PROJECT SPECIFICATIONS.

THIS DRAWING IS THE PROPERTY OF LLOYDS BANKING GROUP AND COPYRIGHT IS RESERVED BY THEM. THE DRAWING IS ISSUED ON CONDITION THAT IT IS NOT COPIED OR DISCLOSED BY OR TO ANY UNAUTHORISED PERSONS WITHOUT PRIOR CONSENT IN WRITING TO LLOYDS BANKING GROUP - GROUP PROPERTY. ALL MODIFIED DRAWINGS SHOULD BE RETURNED TO LLOYDS BANKING GROUP.

GROUP PROPERTY

BRISTOL - PO Box 112, Canons House, Canons Way, BRISTOL, BS99 7LB
 EDINBURGH - Sighthill South, 12 Bankhead Crossway South, EDINBURGH, EH11 4EN
 HALIFAX - Trinity Road, HALIFAX, West Yorkshire, HX1 2RG

PROJECT ADDRESS	SCALE
Halifax	A1 - 1:20
118-132, New Oxford Street	A3 - 1:40
West End	DATE
LONDON, WC1A 1HL	15:05:2017
DRAWING DESCRIPTION	DRAWN BY
First Floor Plan	PW
Internal Elevation Sheet 1	REVISION
PLANNING	D
DRAWING NUMBER	
50941725-AR01-01-0201 PL	