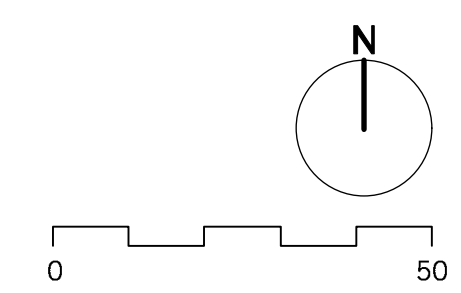
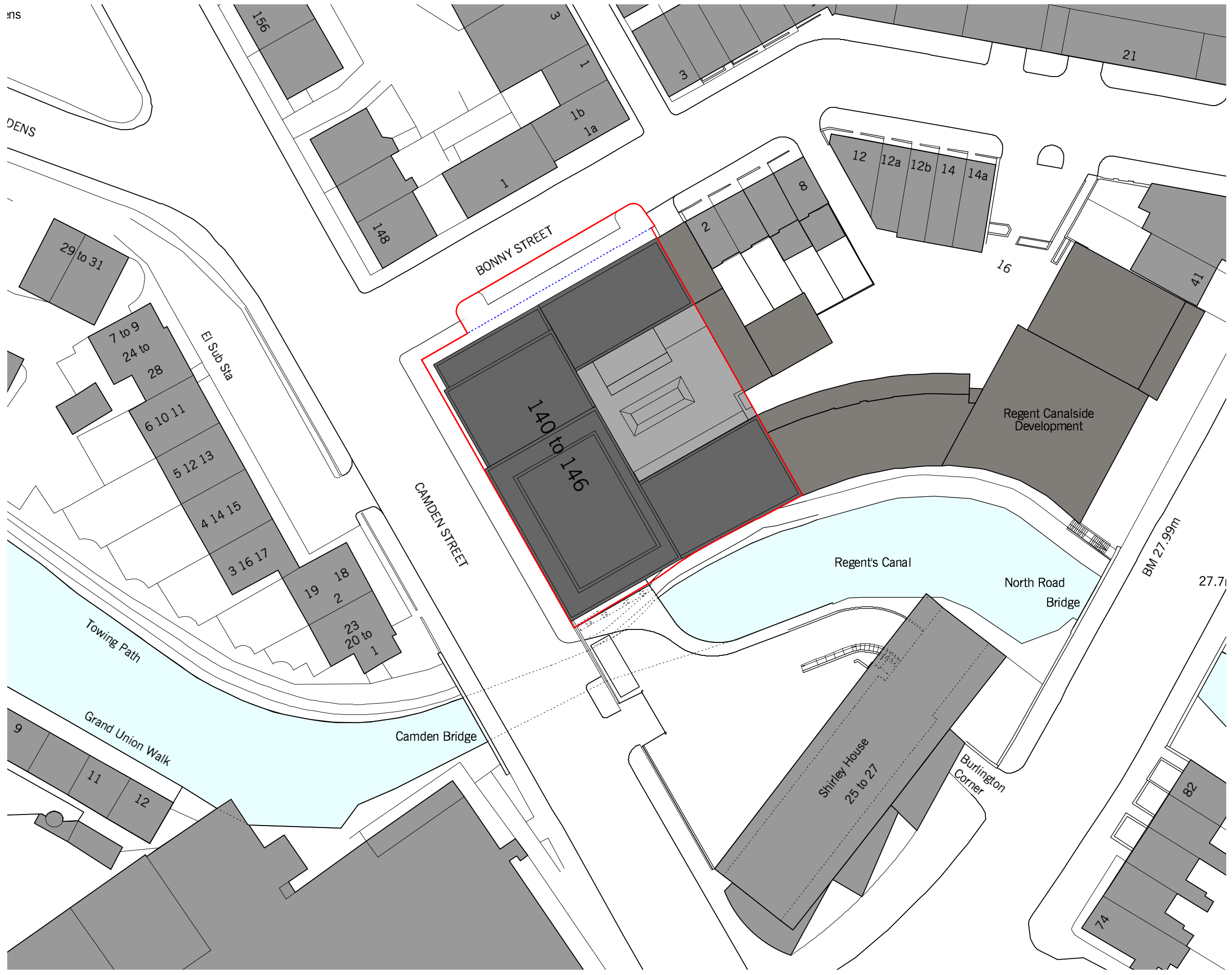
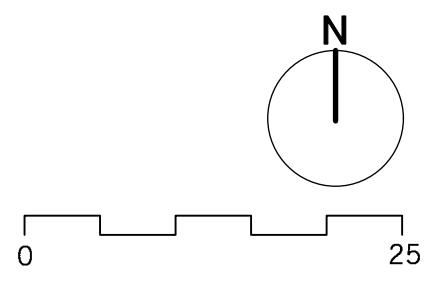


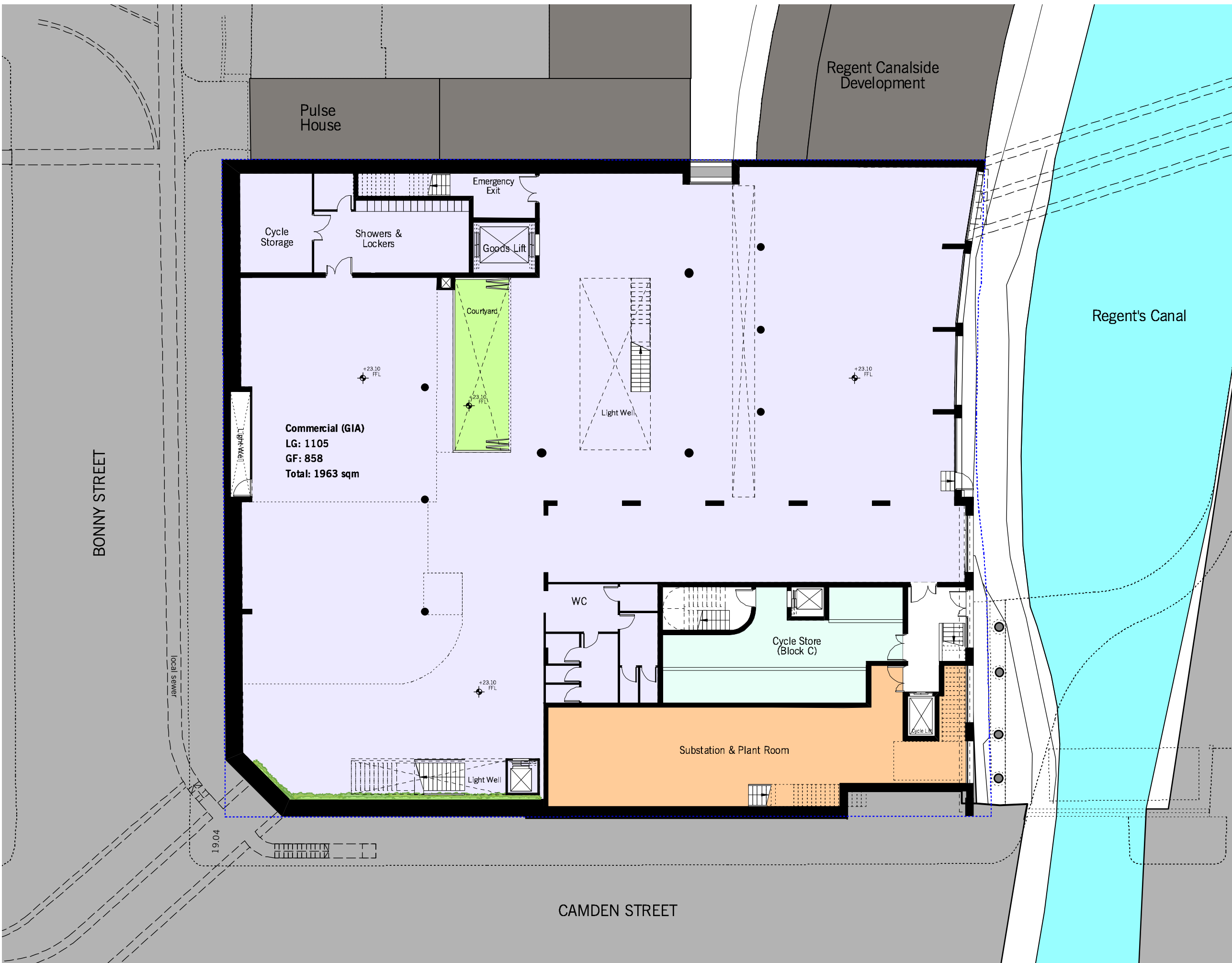
--- Site Boundary  
 --- Red Line Boundary





--- Site Boundary  
 --- Red Line Boundary





**Residential Areas**

- Private Residential
- Intermediate Housing
- Social Rented

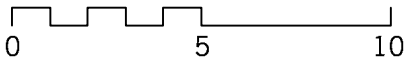
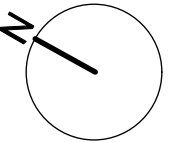
**Commercial & Communal Area**

- Commercial Area
- Communal Areas
- Substation

- Site Boundary
- Red Line Boundary

- Rev.B 15/05/2015:
- 1) Lift and stair position revised
- Rev.D 22/06/2015:
- 1) Lift and stair position revised
  - 2) Goods lift revised
  - 3) Showers & Lockers enlarged

- Rev.E 02/07/2015:
- 1) Minor revisions



BONNY STREET

Local Sewer

19.04

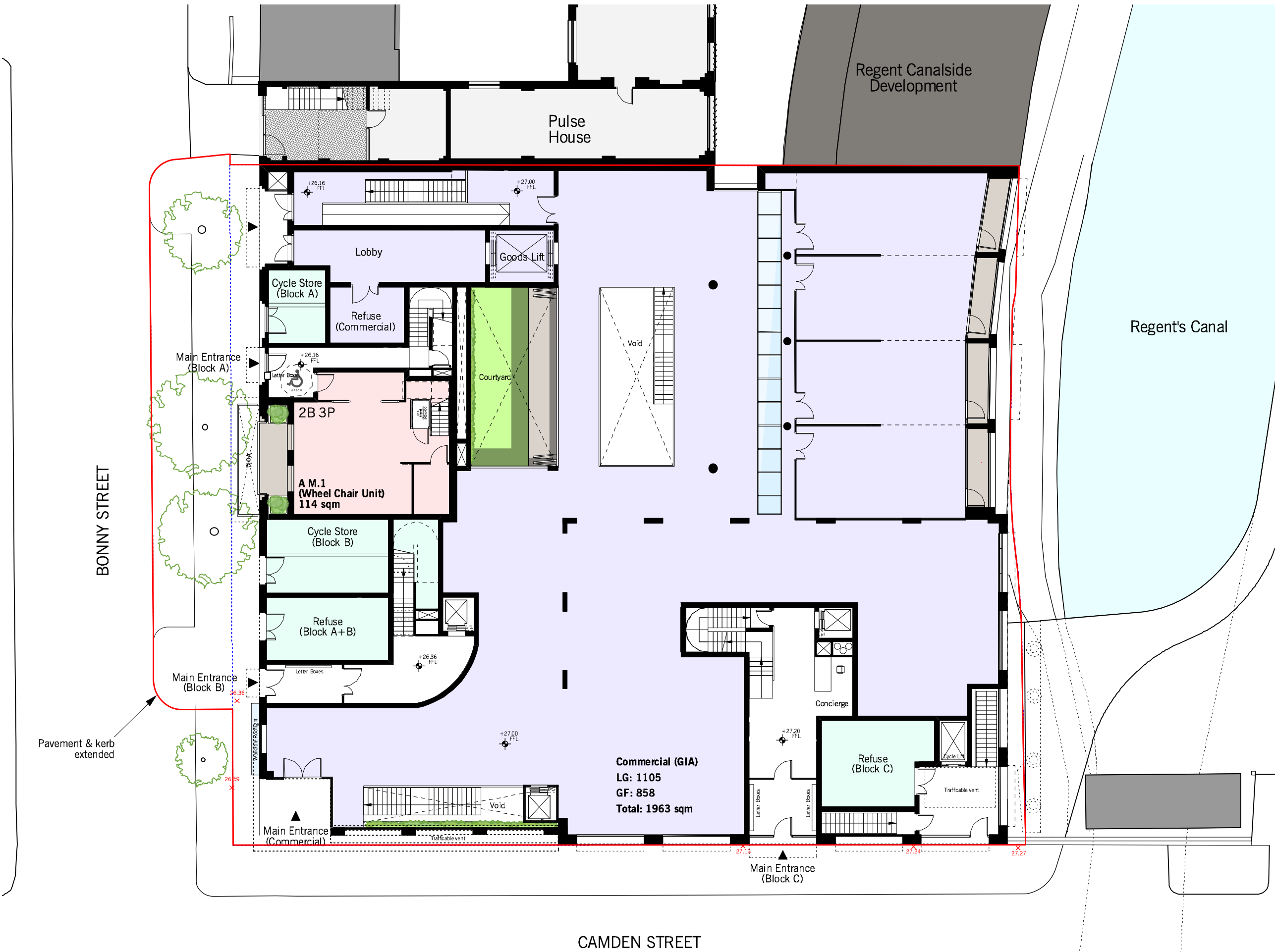
**Commercial (GIA)**  
**LG: 1105**  
**GF: 858**  
**Total: 1963 sqm**

Regent Canalside Development

Regent's Canal

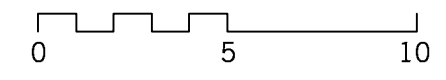
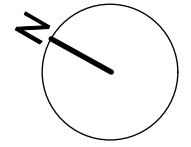
CAMDEN STREET





- Residential Areas**
- Private Residential
  - Intermediate Housing
  - Social Rented
- Commercial & Communal Area**
- Commercial Area
  - Communal Areas
- Site Boundary  
 — Red Line Boundary

- Rev.B 15/05/2015:
- 1) Lift and stair position revised
  - 2) Commercial entrance revised
- Rev.D 22/06/2015:
- 1) Lift and stair position revised
  - 2) Goods lift revised
  - 3) Commercial ramp added

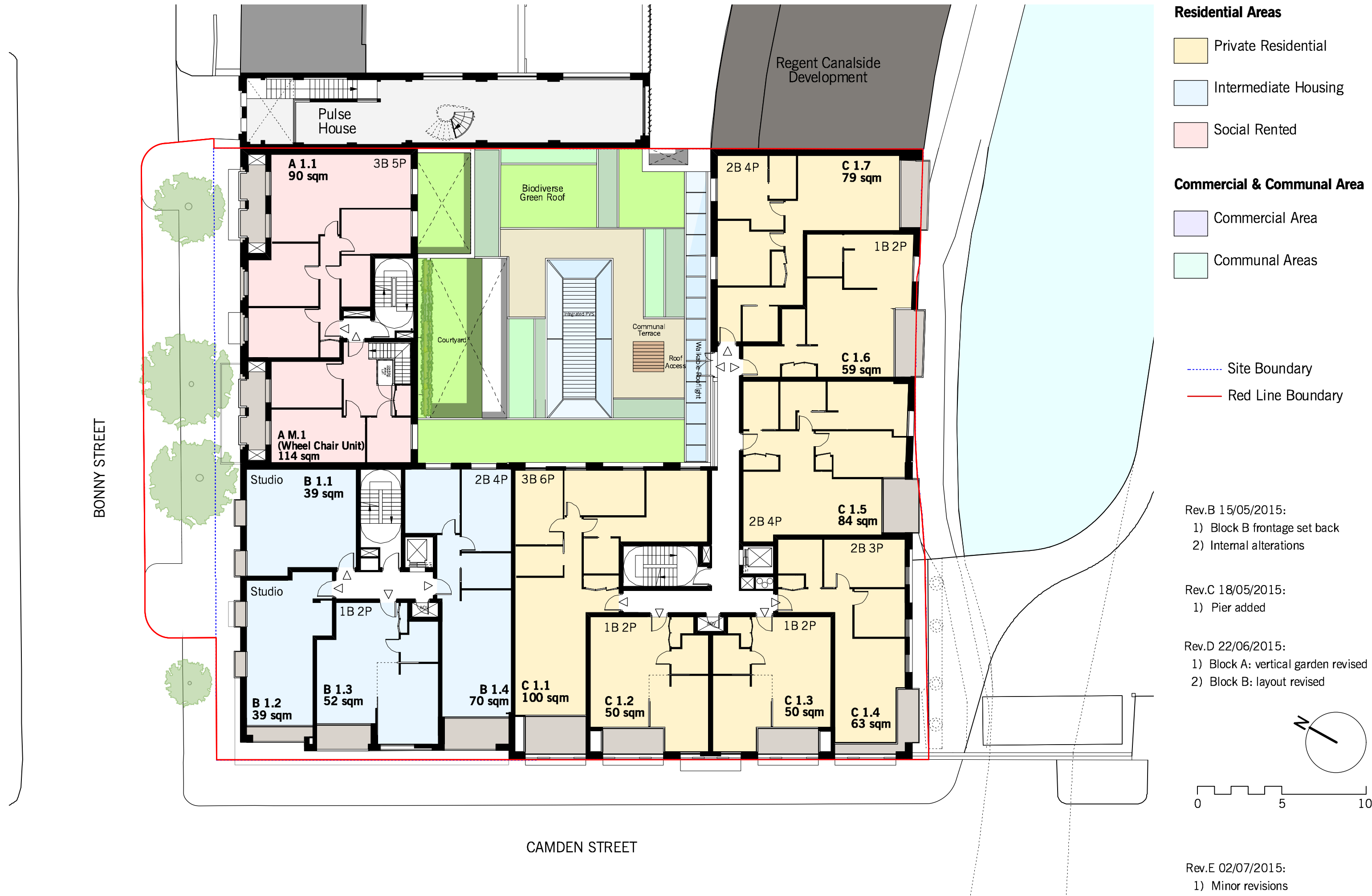


- Rev.E 02/07/2015:
- 1) Minor revisions

Pavement & kerb extended

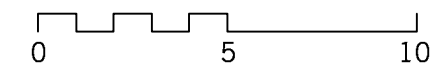
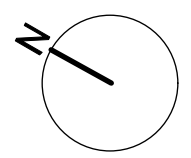
CAMDEN STREET

**Commercial (GIA)**  
 LG: 1105  
 GF: 858  
 Total: 1963 sqm

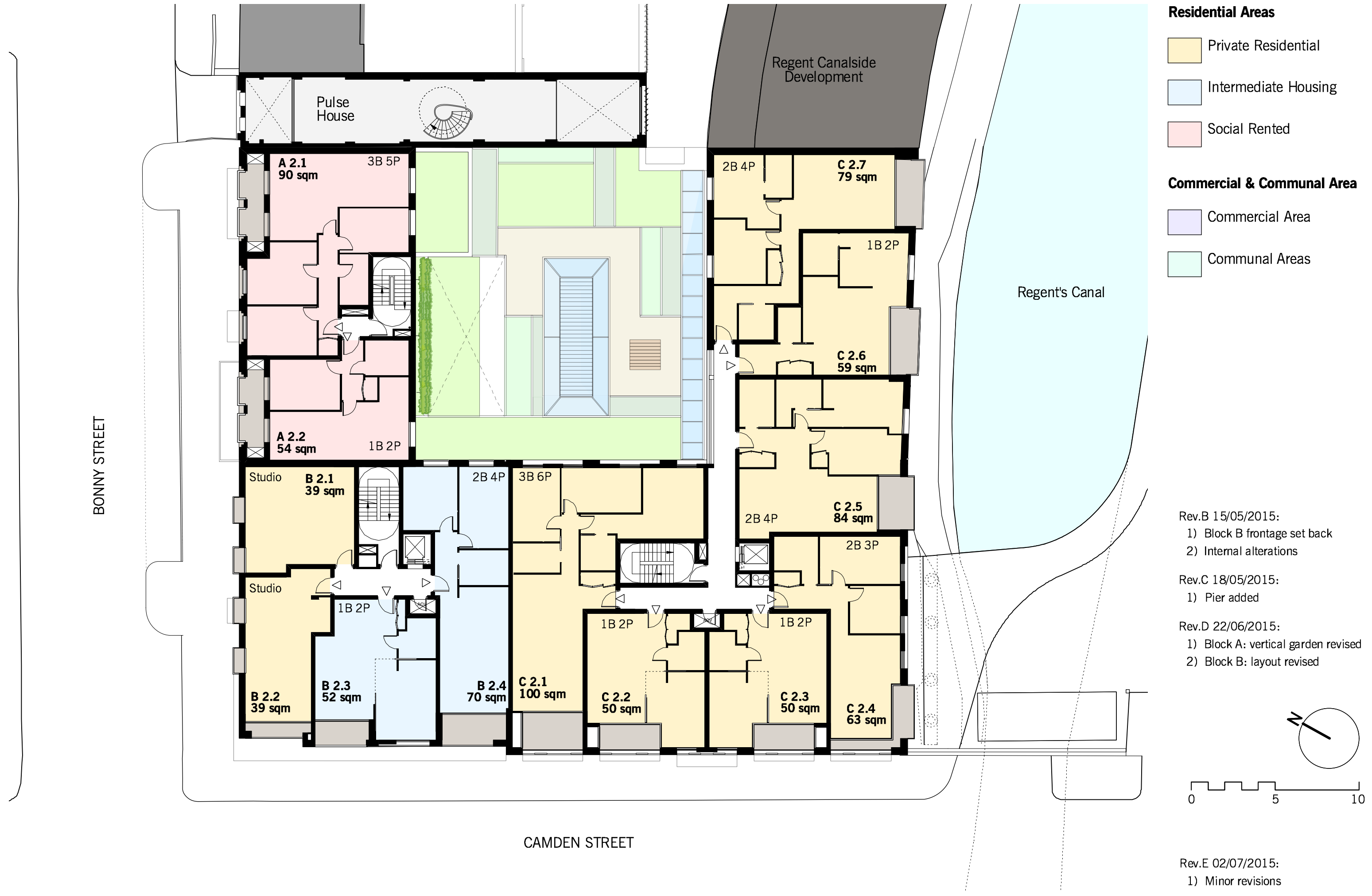


- Residential Areas**
- Private Residential
  - Intermediate Housing
  - Social Rented
- Commercial & Communal Area**
- Commercial Area
  - Communal Areas
- Site Boundary  
 Red Line Boundary

- Rev.B 15/05/2015:
- 1) Block B frontage set back
  - 2) Internal alterations
- Rev.C 18/05/2015:
- 1) Pier added
- Rev.D 22/06/2015:
- 1) Block A: vertical garden revised
  - 2) Block B: layout revised



- Rev.E 02/07/2015:
- 1) Minor revisions



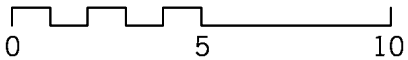
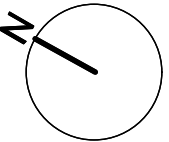
**Residential Areas**

- Private Residential
- Intermediate Housing
- Social Rented

**Commercial & Communal Area**

- Commercial Area
- Communal Areas

- Rev.B 15/05/2015:
- 1) Block B frontage set back
  - 2) Internal alterations
- Rev.C 18/05/2015:
- 1) Pier added
- Rev.D 22/06/2015:
- 1) Block A: vertical garden revised
  - 2) Block B: layout revised
- Rev.E 02/07/2015:
- 1) Minor revisions





**Residential Areas**

- Private Residential
- Intermediate Housing
- Social Rented

**Commercial & Communal Area**

- Commercial Area
- Communal Areas

Rev.C 15/05/2015:

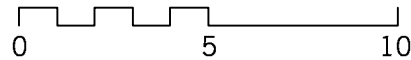
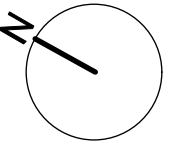
- 1) Block B frontage set back
- 2) Internal alterations
- 3) Set back top floor to Block A by 1.5m (internal parapet 1.1m)

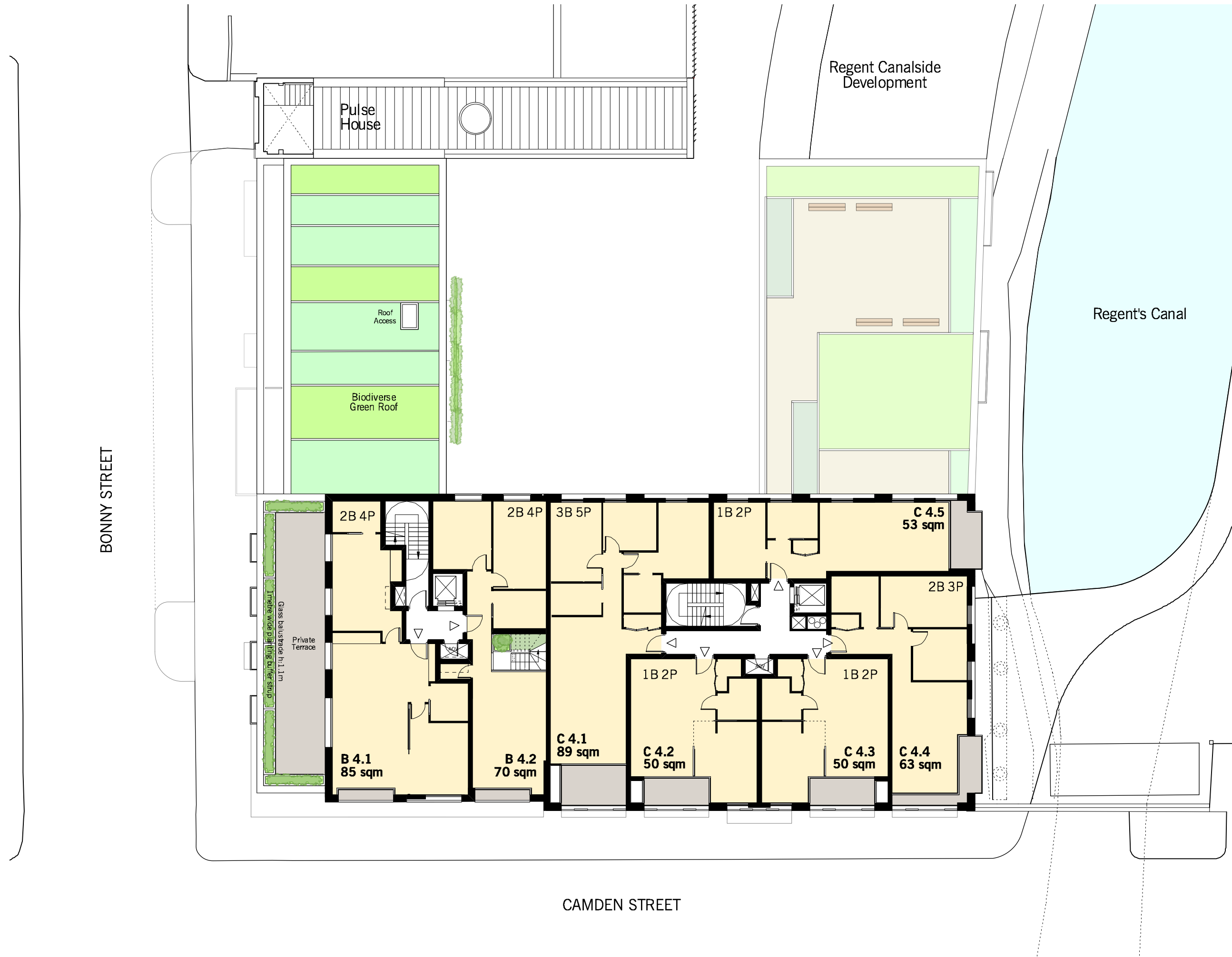
Rev.D 18/05/2015:

- 1) Facade detailing added to top floor of block A

Rev.E 02/07/2015:

- 1) Minor revisions





**Residential Areas**

- Private Residential
- Intermediate Housing
- Social Rented

**Commercial & Communal Area**

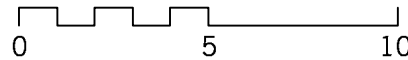
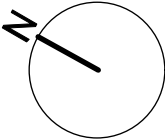
- Commercial Area
- Communal Areas

Rev.B 15/05/2015:

- 1) Block B frontage set back
- 2) Block B set back from Bonny Street
- 3) Internal alterations
- 4) Unit removed on block B

Rev.D 22/06/2015:

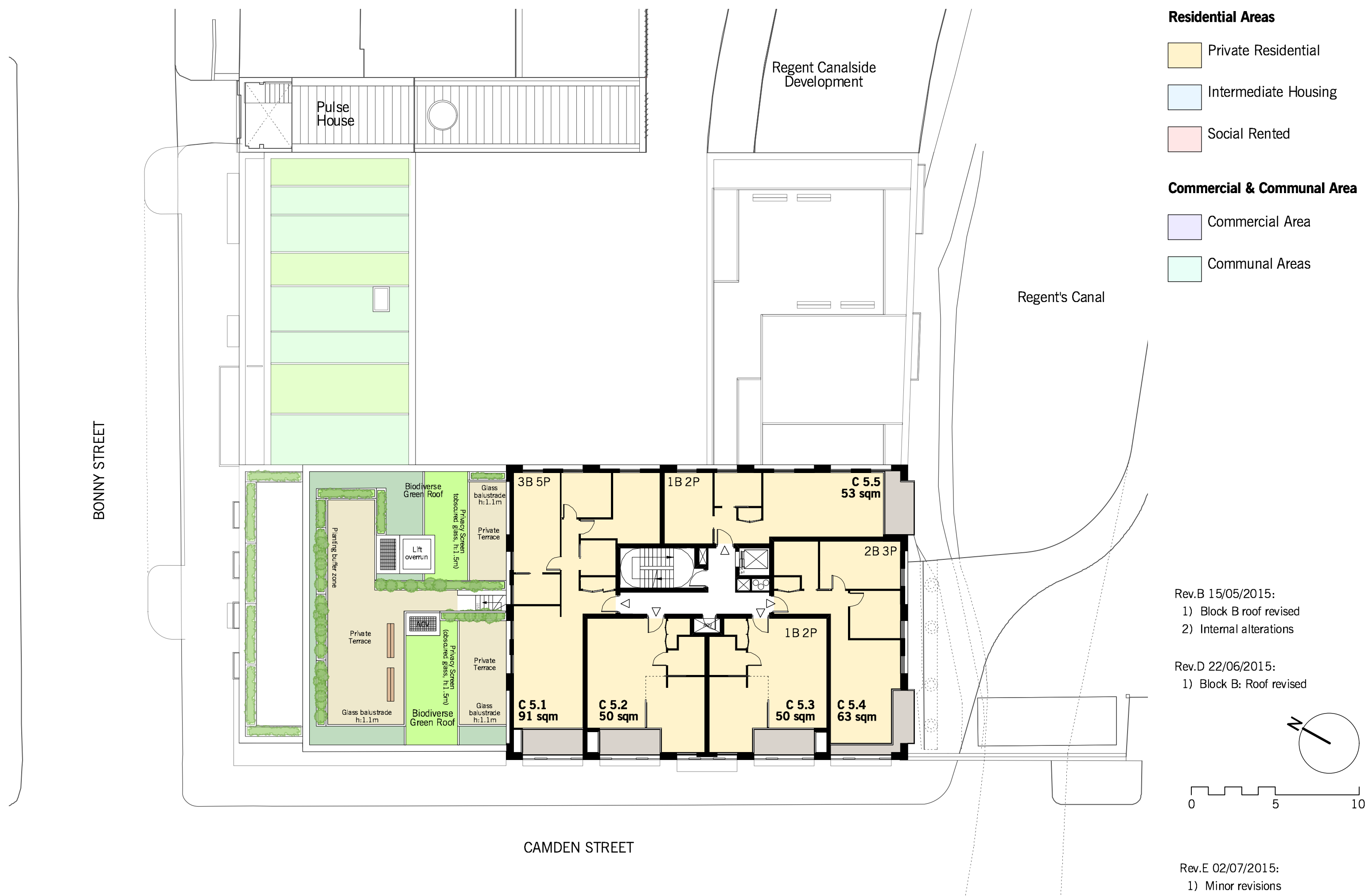
- 1) Block B: Terrace revised
- 2) Block B: Internal alterations



Rev.E 02/07/2015:

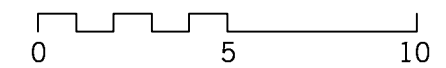
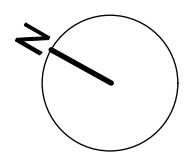
- 1) Minor revisions



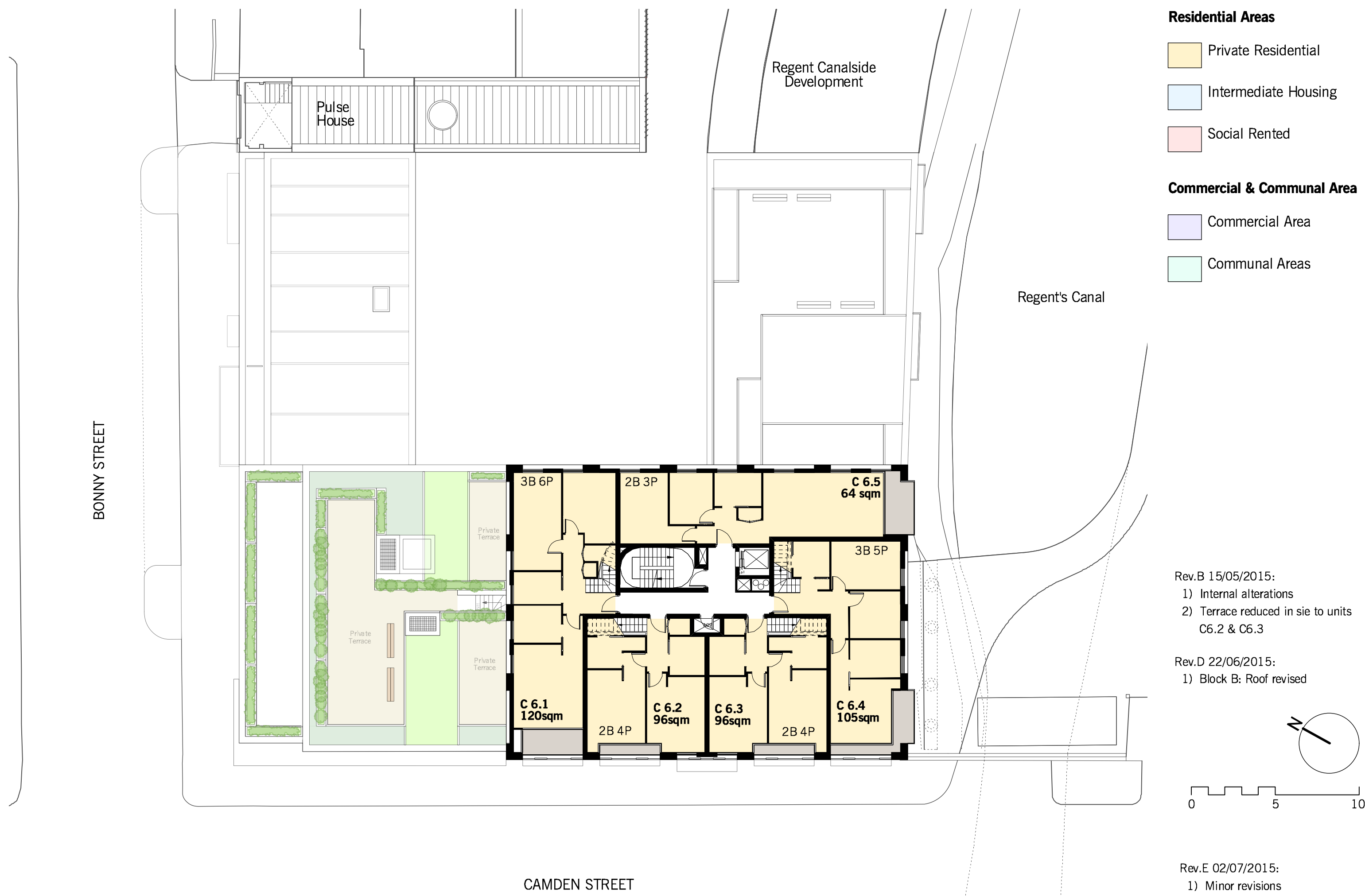


- Residential Areas**
- Private Residential
  - Intermediate Housing
  - Social Rented
- Commercial & Communal Area**
- Commercial Area
  - Communal Areas

- Rev.B 15/05/2015:
- 1) Block B roof revised
  - 2) Internal alterations
- Rev.D 22/06/2015:
- 1) Block B: Roof revised



- Rev.E 02/07/2015:
- 1) Minor revisions

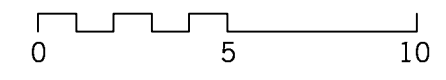
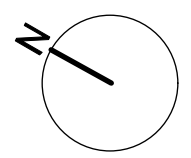


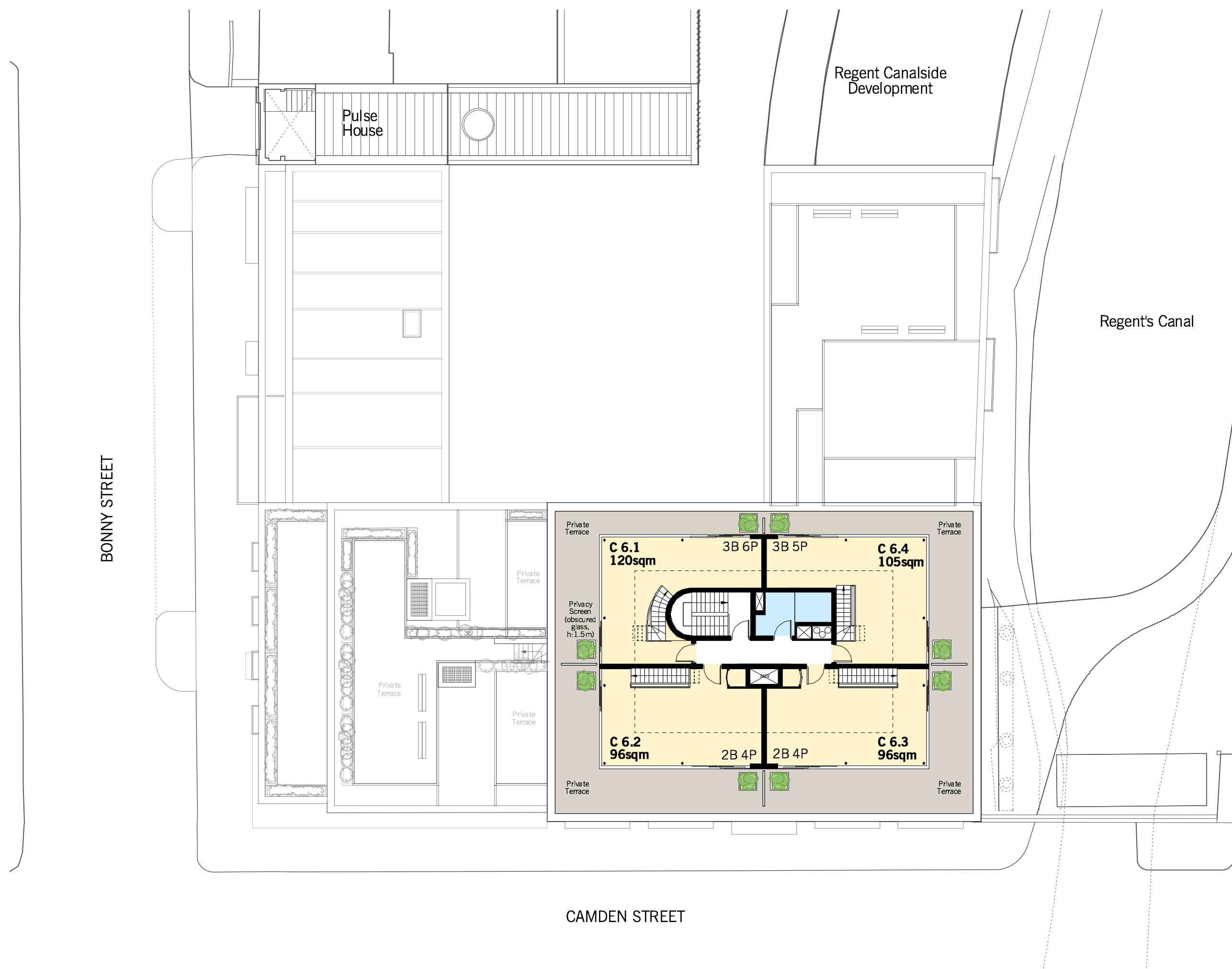
- Residential Areas**
- Private Residential
  - Intermediate Housing
  - Social Rented
- Commercial & Communal Area**
- Commercial Area
  - Communal Areas

Rev.B 15/05/2015:  
 1) Internal alterations  
 2) Terrace reduced in size to units C6.2 & C6.3

Rev.D 22/06/2015:  
 1) Block B: Roof revised

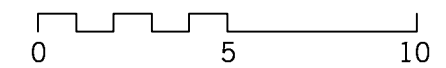
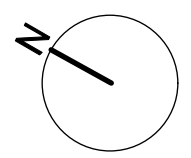
Rev.E 02/07/2015:  
 1) Minor revisions





- Residential Areas**
- Private Residential
  - Intermediate Housing
  - Social Rented
- Commercial & Communal Area**
- Commercial Area
  - Communal Areas

- Rev.B 15/05/2015:  
1) Internal alterations
- Rev.D 22/06/2015:  
1) Block B: Roof revised



- Rev.E 02/07/2015:  
1) Minor revisions



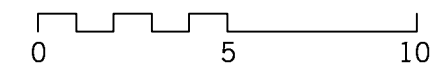
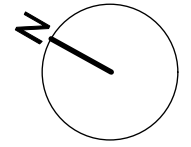
BONNY STREET

CAMDEN STREET

Regent Canalside Development

Regent's Canal

- Rev.B 15/05/2015:
  - 1) Block A & B roof revised
- Rev.D 22/06/2015:
  - 1) Block A & B: Roof revised



- Rev.E 02/07/2015:
  - 1) Minor revisions