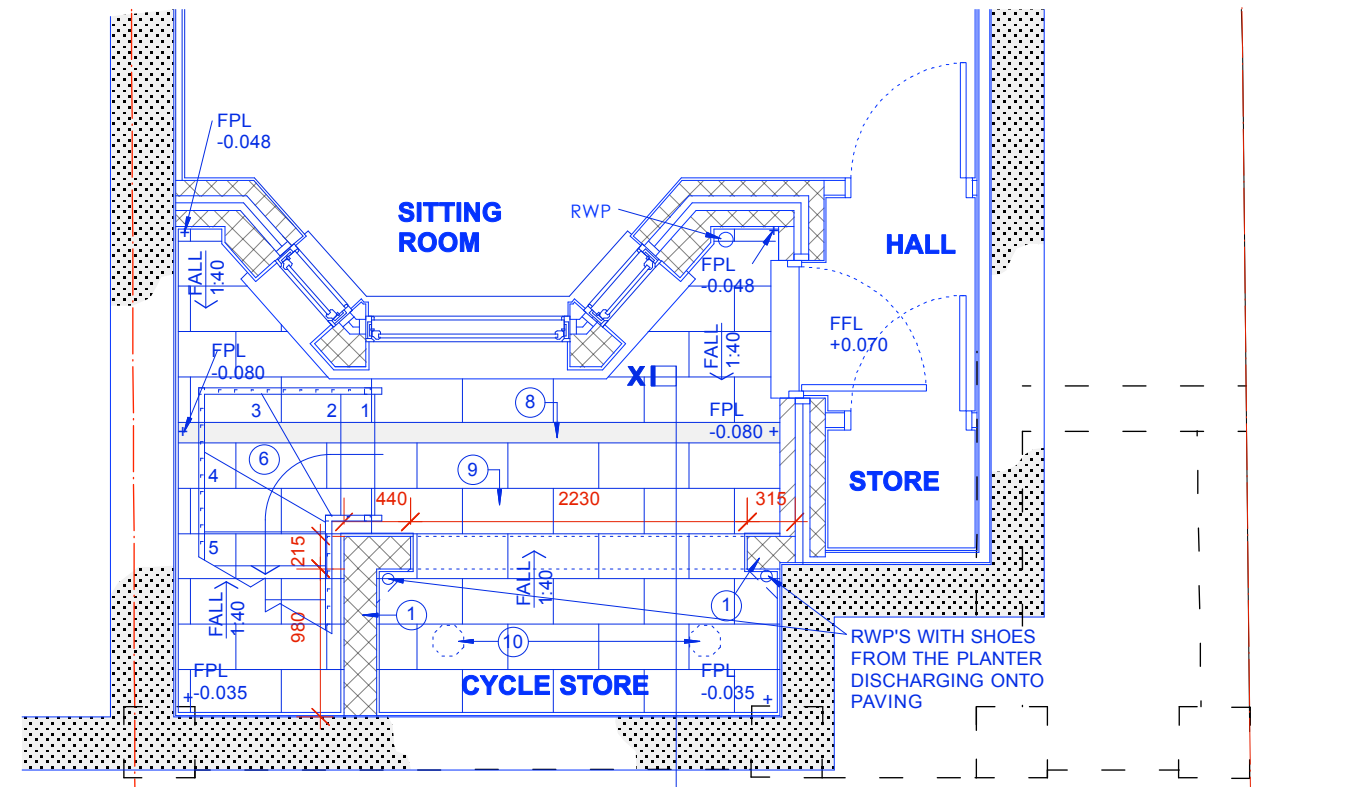


PROPOSED GROUND FLOOR PLAN



PROPOSED BASEMENT PLAN



PROPOSED STREET ELEVATION

NOTES:

1. LONDON YELLOW STOCK BRICKWORK TO MATCH THE EXISTING BUILDING.
2. YORK STONE COPINGS TO WALLS.
3. YORK STONE COPING STONES TO PIERS.
4. BLACK PAINTED METAL GATE WITH VERTICAL BARS.
5. BLACK PAINTED METAL FENCING.
6. BLACK PAINTED METAL STAIRCASE.
7. SEDUM PLUG PLANTED WILD FLOWERS BY BAUDER OR SIMILAR APPROVED.
8. LINEAR DRAINAGE CHANNEL REF - SS135B5 BY WADE INETRATIONAL OR SIMILAR APPROVED.
9. 600x300mm INDIAN SANDSTONE PAVING IN BRICK BOND PATTERN.
10. OUTLETS IN PLANTER REF - WB3 SERIES BY WADE INETRATIONAL OR SIMILAR APPROVED.
11. NEW REINFORCED CONCRETE STEPS AS DETAILED BY THE STRUCTURAL ENGINEER FINISHED WITH STOE TREADS AND RISERS.

FOR SECTION X-X REFER TO DRAWING NO. 428 TCD09.

CYCLE STORE DETAILS - SHEET 1

REV.	DATE	DESCRIPTION	REV.	DATE	DESCRIPTION	REV.	DATE	DESCRIPTION

NOTE:
 FOR THE PURPOSE OF PLANNING ONLY DRAWINGS CAN BE SCALED OFF.
 ALL DIMENSIONS ARE IN MILLIMETERS. INCONSISTENCIES ARE TO BE REPORTED TO THE ARCHITECT IMMEDIATELY.
 COPYRIGHT IS HELD BY SIMON MILLER ARCHITECTS LTD.

CLIENT:
 BEATE MJAALAND
 ADAM LEWIS

SITE:
 33 SOUTH HILL PARK
 HAMPSTEAD
 LONDON NW3 2ST

PROJECT:
 PROPOSED BASEMENT &
 EXTERNAL WORKS

DRAWING TITLE:
 GREEN ROOF AND CYCLE
 STORE DETAILS -
 SHEET 1

DISCHARGE OF CONDITION APPLICATION

Simon Miller Architects Ltd		DATE:	OCT 2017
1033 B Finchley Road Temple Fortune London NW11 7ES		DRAWN BY:	PRW
Tel: 020 8201 9875 Web: simonmillerarchitects.com Email: info@simonmillerarchitects.com		SCALE:	1:50 @ A3
DRAWING NO.:	428 TCD100	REVISION:	