



CONSTRUCTION KEY

existing retained

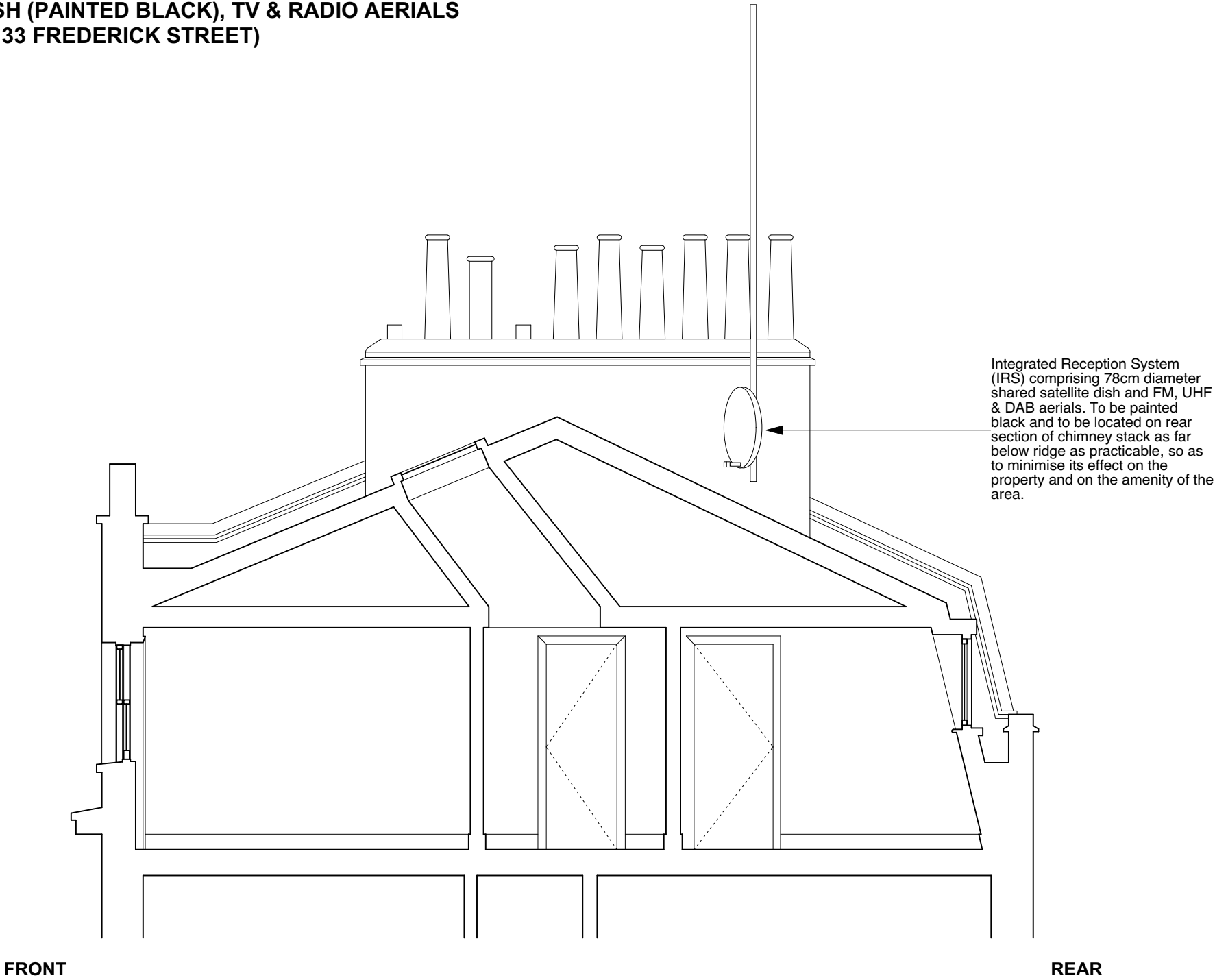
line over/under/behind

demolished

new construction

28mm thick drylining
(incorporating Newton
503 mesh & 12.5mm
plasterboard)

EXAMPLE OF IRS INSTALLATION - SATELLITE DISH (PAINTED BLACK), TV & RADIO AERIALS (at 33 FREDERICK STREET)



<div>project5</div> <div>ARCHITECTURE</div>	<div>PROJECT 5</div> <div>ARCHITECTURE LLP</div> <div>8 Waterson Street</div> <div>London E2 8HL</div> <div>T: +44 (0)20 7739 9131</div> <div>F: +44 (0)20 7739 3687</div> <div>E: info@p5a.co.uk</div>	<div>job title</div> <div>48 FREDERICK STREET, LONDON WC1X 0ND</div>	<div>scale</div> <div>1:50 @ A3</div>	<div>drawn</div> <div>SA</div>	<div>drawing no.</div> <div>6214-FS48-P09</div>
		<div>drawing</div> <div>PROPOSED TV AERIAL INSTALLATION</div>	<div>date</div> <div>NOV 2017</div>	<div>checked</div> <div>XX</div>	