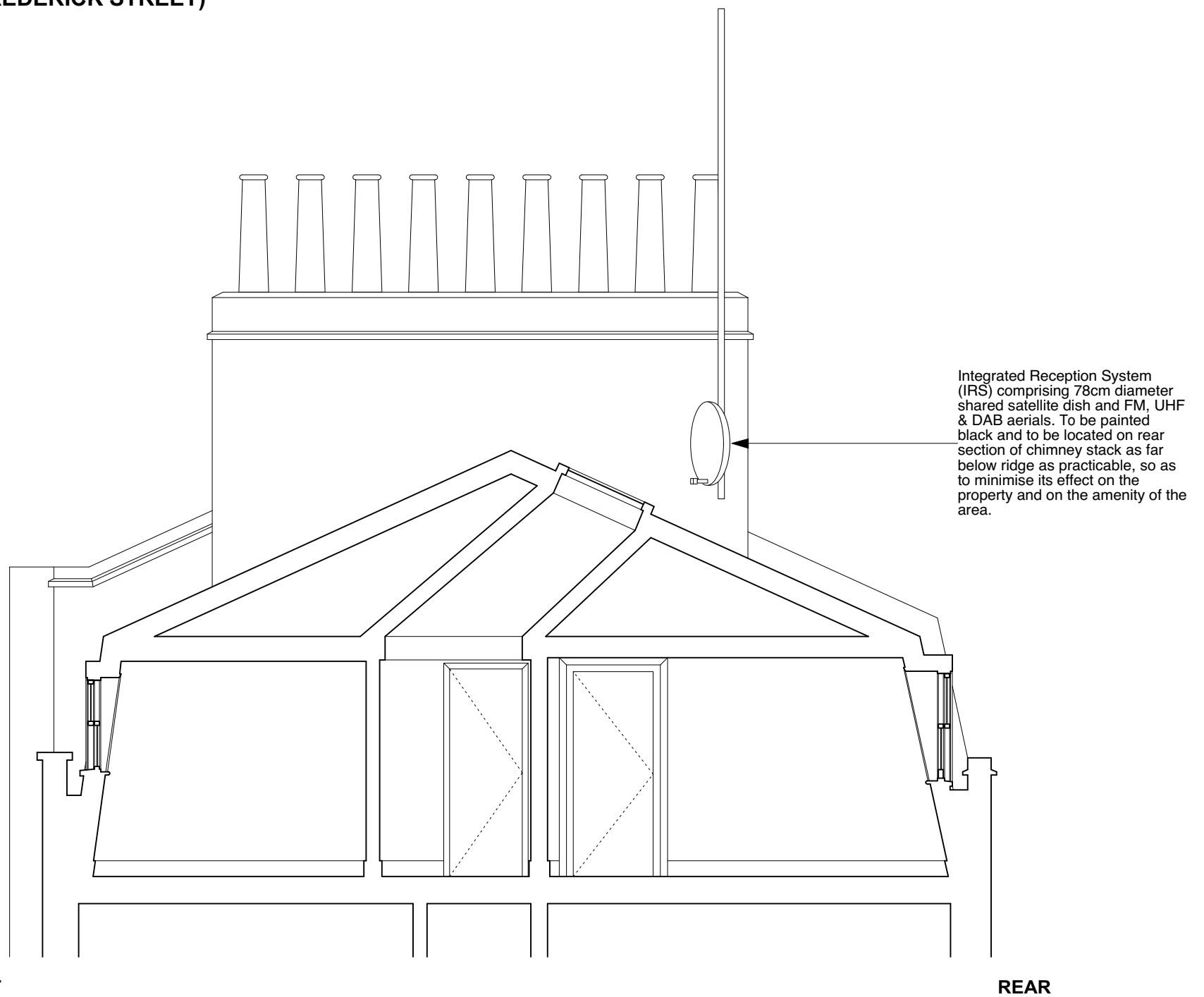




CONSTRUCTION KEY	
	existing retained
	line over/under/behind
	demolished
	new construction
	28mm thick drylining (incorporating Newton 503 mesh & 12.5mm plasterboard)

**EXAMPLE OF IRS INSTALLATION - SATELLITE DISH (PAINTED BLACK), TV & RADIO AERIALS (at 33 FREDERICK STREET)**



FRONT

REAR

	PROJECT 5 ARCHITECTURE LLP 8 Waterson Street London E2 8HL T: +44 (0)20 7739 9131 F: +44 (0)20 7739 3687 E: info@p5a.co.uk	job title <b>24 FREDERICK STREET, LONDON WC1X 0ND</b>	scale <b>1:50 @ A3</b>	drawn <b>SA</b>	drawing no. <b>6214-FS24-P09</b>
	drawing <b>PROPOSED TV AERIAL INSTALLATION</b>	date <b>NOV 2017</b>	checked <b>XX</b>		