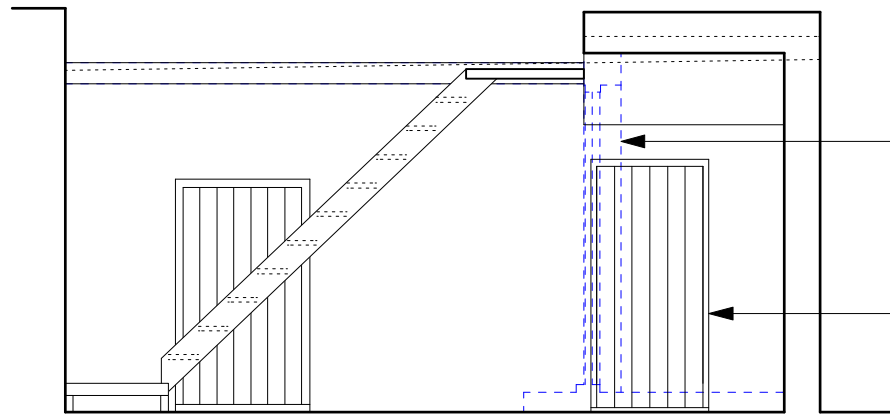


EXISTING FRONT AREA ARRANGEMENT
(RAILINGS/BALUSTRADING OMITTED FOR CLARITY)

CONSTRUCTION KEY	
	existing retained
	line over/under/behind
	demolished
	new construction
	28mm thick drylining (incorporating Newton 503 mesh & 12.5mm plasterboard)

existing ledged braced & battened inward opening vault door



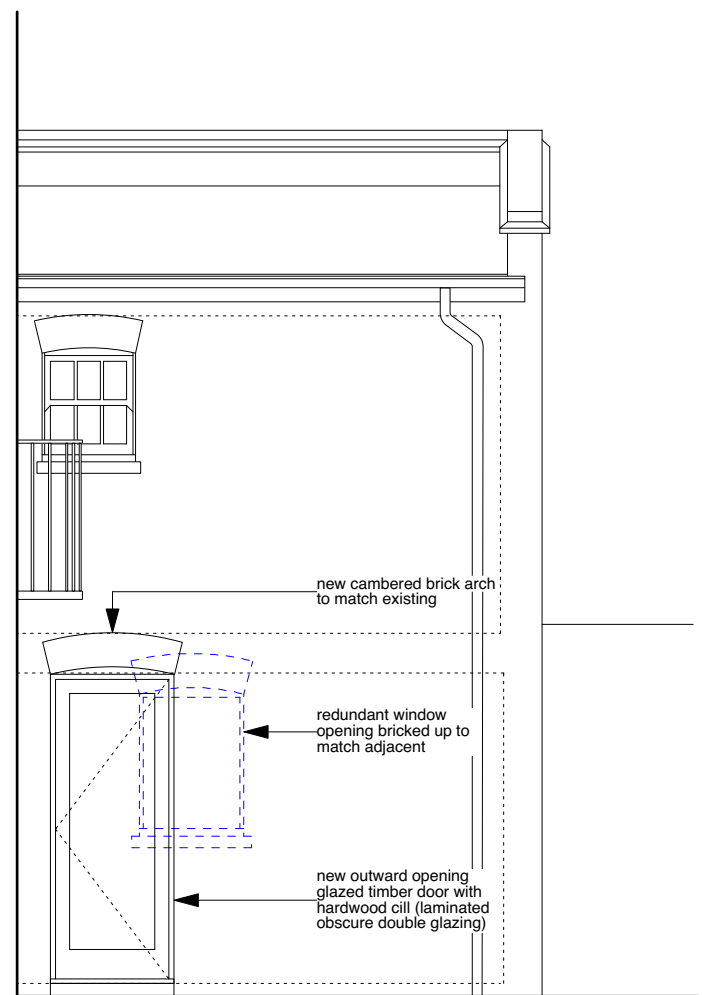
PROPOSED FRONT AREA ARRANGEMENT
(RAILINGS/BALUSTRADING OMITTED FOR CLARITY)

non-original wall and joinery (current entrance hall) demolished and all surfaces reinstated. concrete floor removed down to level of paving and entire area repaved with concrete paving slabs

new black painted ledged braced & battened outward opening vault door and frame to restored opening



REAR ELEVATION



BACK EXTENSION SIDE ELEVATION

new painted timber casement window double glazed with white obscure laminated glass & painted precast concrete sub cill - redundant door opening bricked up to match adjacent

new cambered brick arch to match existing

redundant window opening bricked up to match adjacent

new outward opening glazed timber door with hardwood cill (laminated obscure double glazing)

black boiler flue