



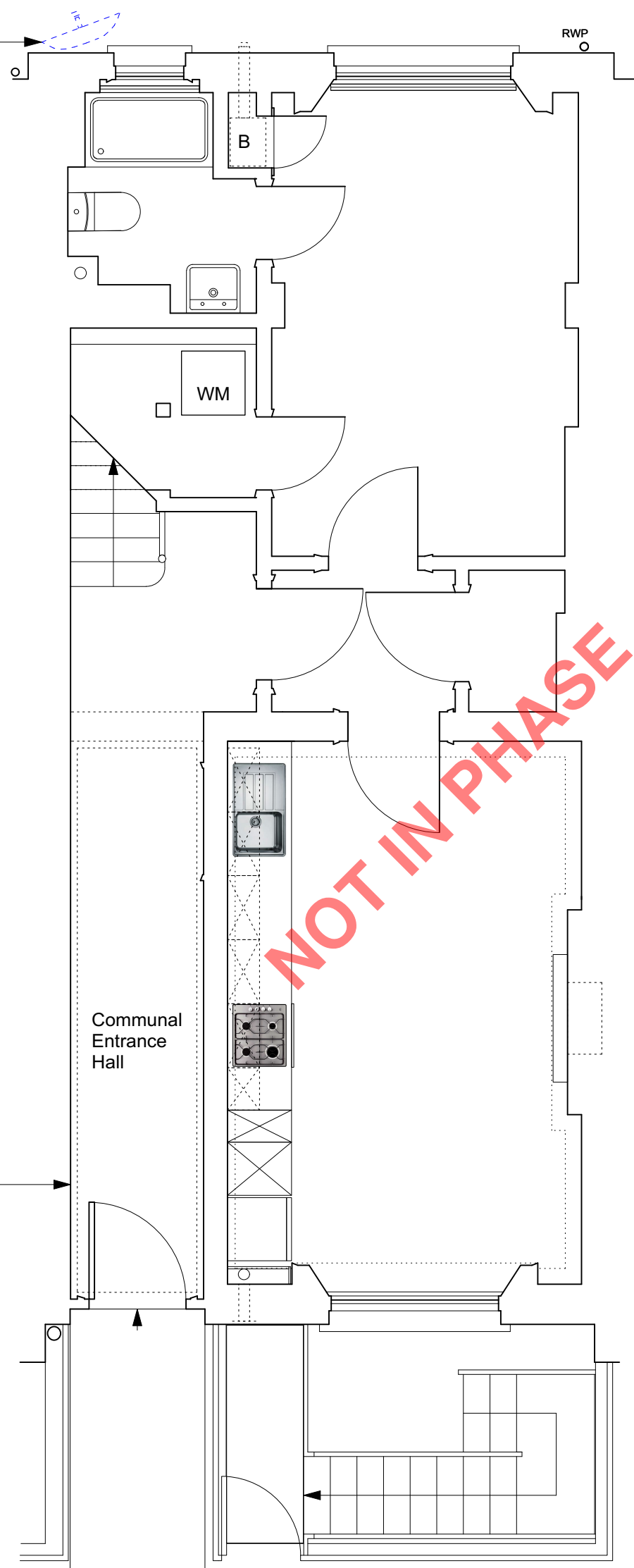


CONSTRUCTION KEY	
	existing retained
	line over/under/behind
	demolished
	new construction

satellite dish (serving basement and ground floor flats) removed

RWP




**NOT IN PHASE**



fire alarm control panel with smoke detectors in communal circulation areas and private entrance halls/stairs



	PROJECT 5 ARCHITECTURE LLP 8 Waterson Street London E2 8HL T: +44 (0)20 7739 9131 F: +44 (0)20 7739 3687 E: info@p5a.co.uk	job title <b>23 FREDERICK STREET, LONDON WC1X 0NF</b>	scale <b>1:50 @ A3</b>	drawn SA	drawing no. <b>6214-FS23-P02</b>
	drawing <b>GROUND FLOOR - PROPOSED</b>	date <b>NOV 2017</b>	checked XX		