

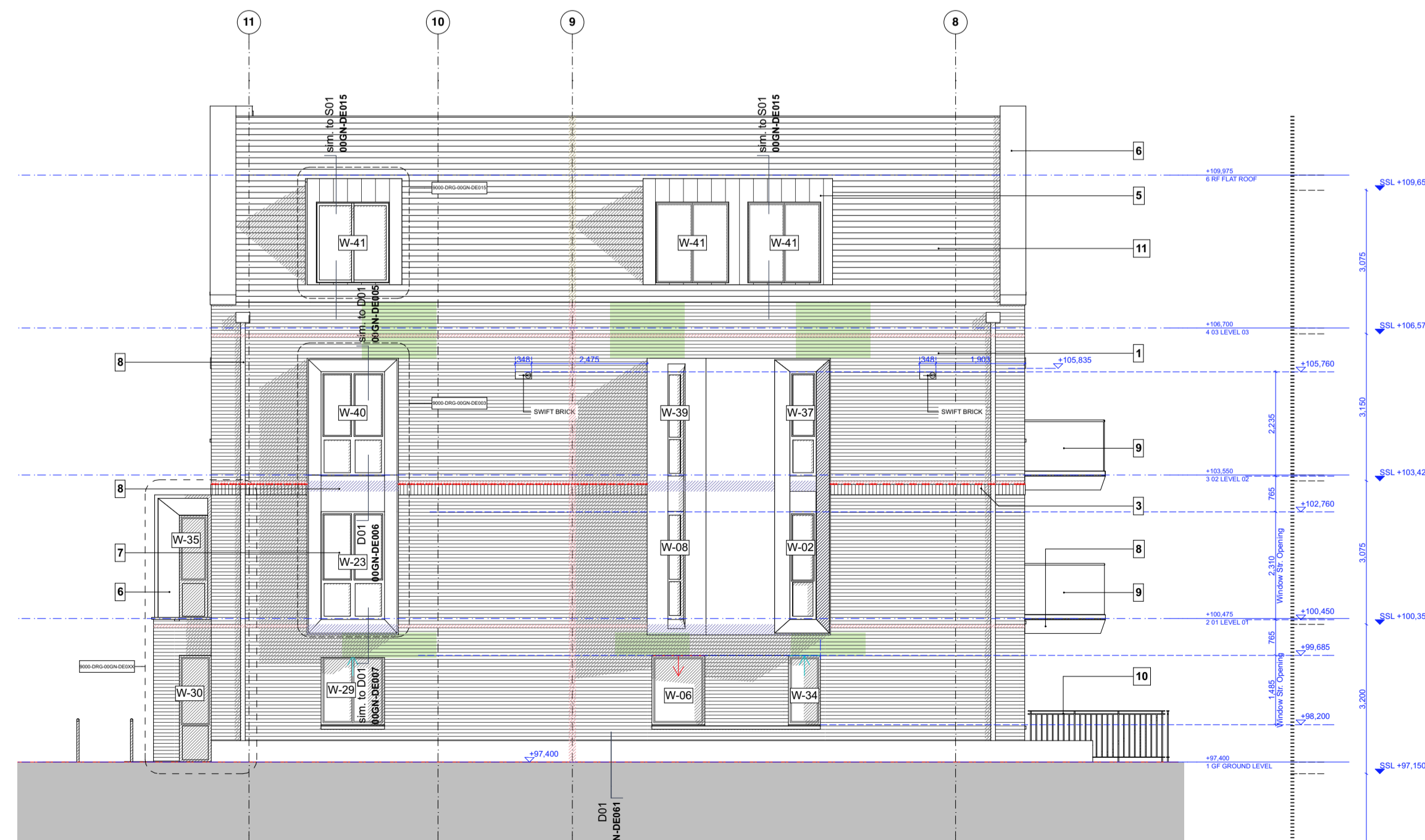
**GENERAL NOTE:**  
REFER TO A&Q DRAWINGS

9000-DRG-00GN-DE001	FOR TYPICAL WINDOW HEAD DETAILS
9000-DRG-00GN-DE011	FOR TYPICAL ROOFLIGHTS DETAILS
9000-DRG-00GN-DE015	FOR TYPICAL METAL CLAD DORMER DETAILS
9000-DRG-00GN-DE029	FOR TYPICAL SECRET GUTTER DETAILS
9000-DRG-00GN-DE003	FOR TYPICAL ORIEL WINDOW DETAILS

**NOTE:**  
REFER TO FOURPOINT ARCHITECTS DRAWINGS FOR FURTHER TECHNICAL INFORMATION (MOVEMENT JOINTS, BRICK SUPPORT ETC.)

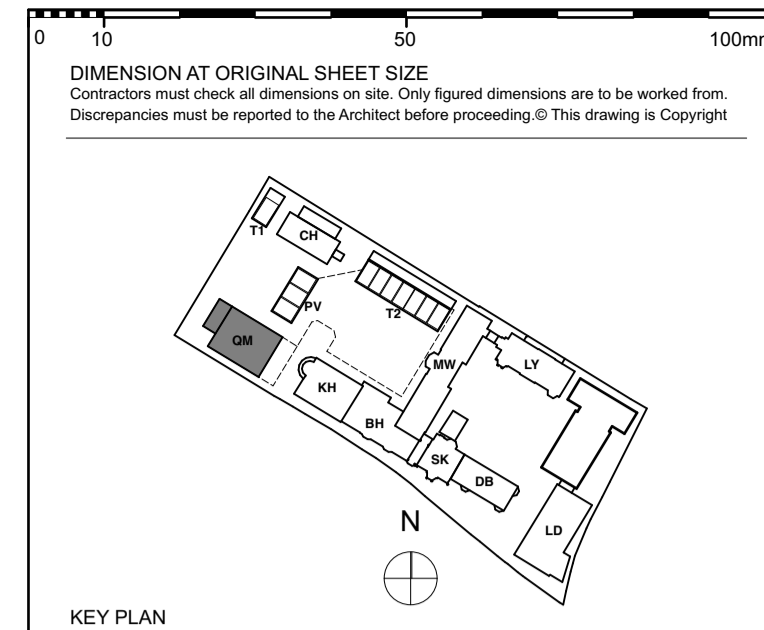


**Proposed North Elevation**  
Scale 1:100



**Proposed East Elevation**  
Scale 1:100

- Material name**
- 1 | Stock red brick with flemish bond (Montana metric stock by The Bespoke Brick Company)
  - 2 | Stock red brick with flemish bond (Montana metric stock by The Bespoke Brick Company) with raked mortar joints and darker mortar colour or pointing
  - 3 | Soldier coursed red brick (Montana metric stock by The Bespoke Brick Company) with recessed mortar joints and darker mortar colour or pointing
  - 4 | Soldier coursed red brick (Montana metric stock by The Bespoke Brick Company)
  - 5 | Pre-patinated metal cladding/coping - Nordic Brass (weathered) by Aurubis
  - 6 | Natural Limestone
  - 7 | Double glazed composite windows by Ideal Combi. Colour RAL 1035
  - 8 | Aluminium metal fascia and rainwater goods to colour RAL 1035
  - 9 | Structural glass balustrade by HandrailDesign or similar. Top rail colour RAL 1035
  - 10 | Metal railings to colour RAL 1035
  - 11 | Clay roof tiles by Dreadnought
  - 12 | Clay brick vent colour to match brick
  - 13 | Petrarch cladding panel by CEP cladding or similar
  - 14 | Curtain walling system by Reynaers Aluminium RAL 1035
  - 15 | Render finish to RAL 9010
  - 16 | Metal Louvers RAL 1035
  - 17 | Glass canopy over the entrance
  - 18 | Etched glass bridge
  - 19 | Perforated metal panel over the door to RAL 1035



- KEY PLAN**
- Elevation Key**
- Proposed masonry support
  - Proposed vert. movement joints
  - Brick bed joint reinforcement, shown indicatively, every 3rd course (225mm) over the full height of the brickwork panels (outer skin) shown hatched on the elevations. Minimum overlap 225mm using full 2700mm strips. Reinforcement to be installed in accordance with the manufacturers instructions. Movement joints, brick reinforcement, location & extent are subject to confirmation by the structural engineer / specialist. Location and areas subject to change on specialist recommendation. 2 courses bed joints reinforcement to be allowed for below stone copings - see drawing no. 9000-DRG-00GN-DE001 for further information.
  - 60 min Cavity Closer at separating walls / floors by Siderise or similar and approved
  - 60 min non ventilated rainscreen barrier by HSP Fire Protection or similar and approved
  - 60 min fire barrier for pitched roofs by Rockwool or similar and approved
  - 90 min Cavity Closer at separating walls / floors by Siderise or similar and approved
  - Intercom
  - Soffit vent - Extract / Intake (Balconies)
  - Extract vent above window
  - Supply vent above window
  - Apartment wall light
  - Entrance wall light

**CONSTRUCTION**

REVISION	DRN	CHKD	DATE
C1 Construction Issue	FC	ST	11/04/2017
C2 Revised as clouded	FC	ST	14/07/2017
C3 M/NR ventilation intake/extract locations updated	FC	ST	28/07/2017
C4 Window W-03 changed to louvers as clouded. Swift brick / notes added	FC	ST	05/10/2017



PROJECT  
**KIDDERPORE AVENUE**

DRAWING  
Queen Mother's Hall  
North & East Elevations As Proposed

SCALE 1:100 @ A1 DATE October 2017

DRAWING No. 15 230 DRAWN BY ST  
9000-DRG-02QM- EL002 REV C4

**A & Q PARTNERSHIP (LONDON) LTD**  
THE LUX BUILDING, 2-4 HOXTON SQUARE, LONDON N1 6 NU  
Tel: 020 7613 2244 Fax: 020 7613 2642 Email: london@aqp.co.uk  
ARCHITECTURE DESIGN MASTERPLANNING INTERIORS