




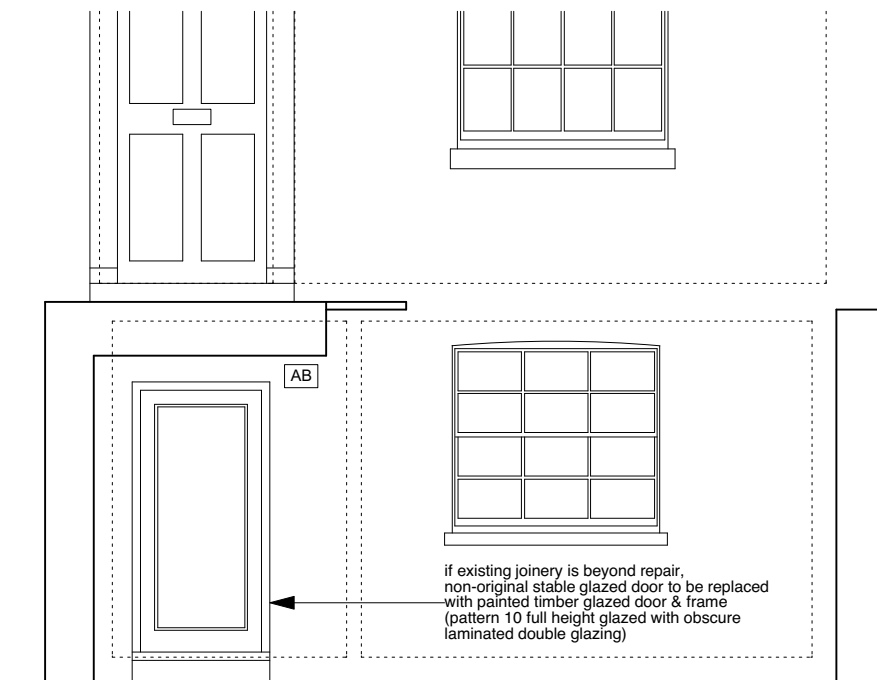
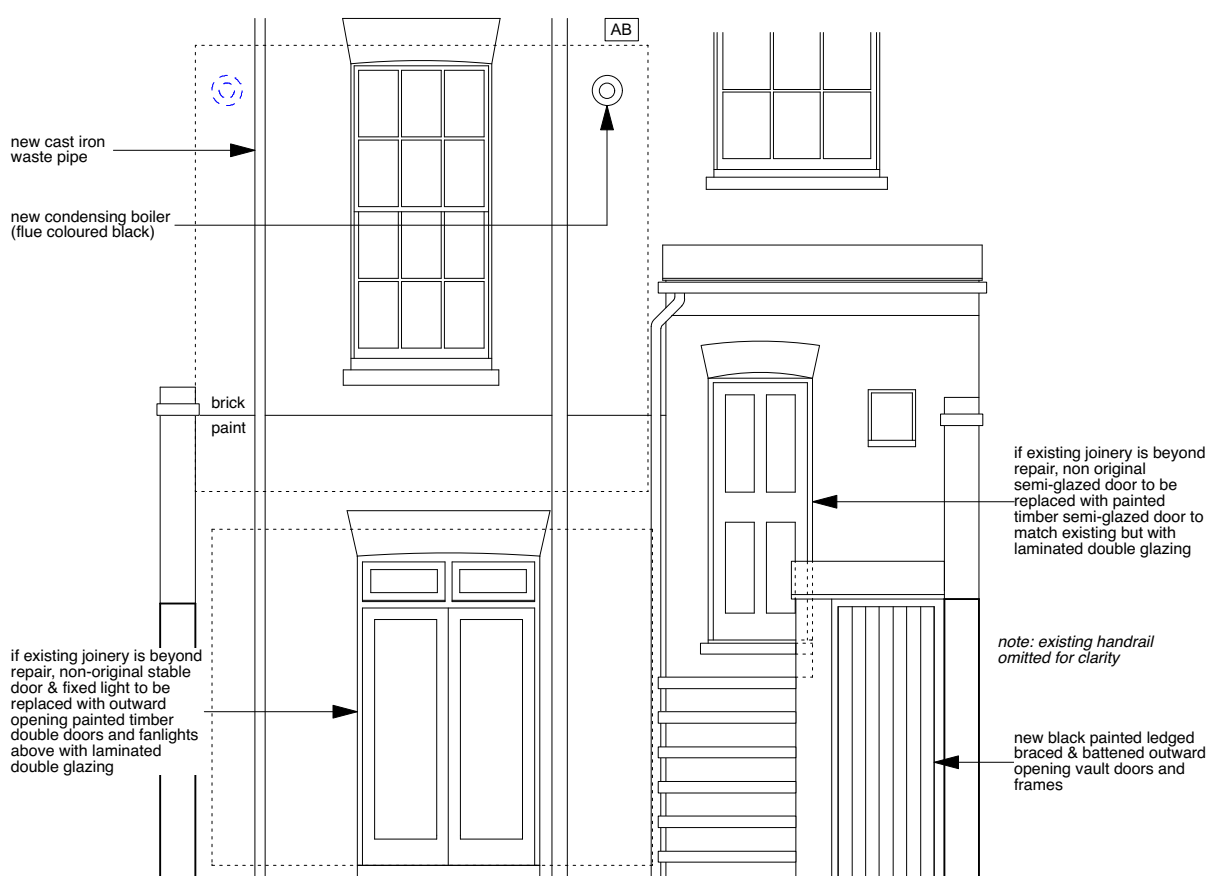


CONSTRUCTION KEY

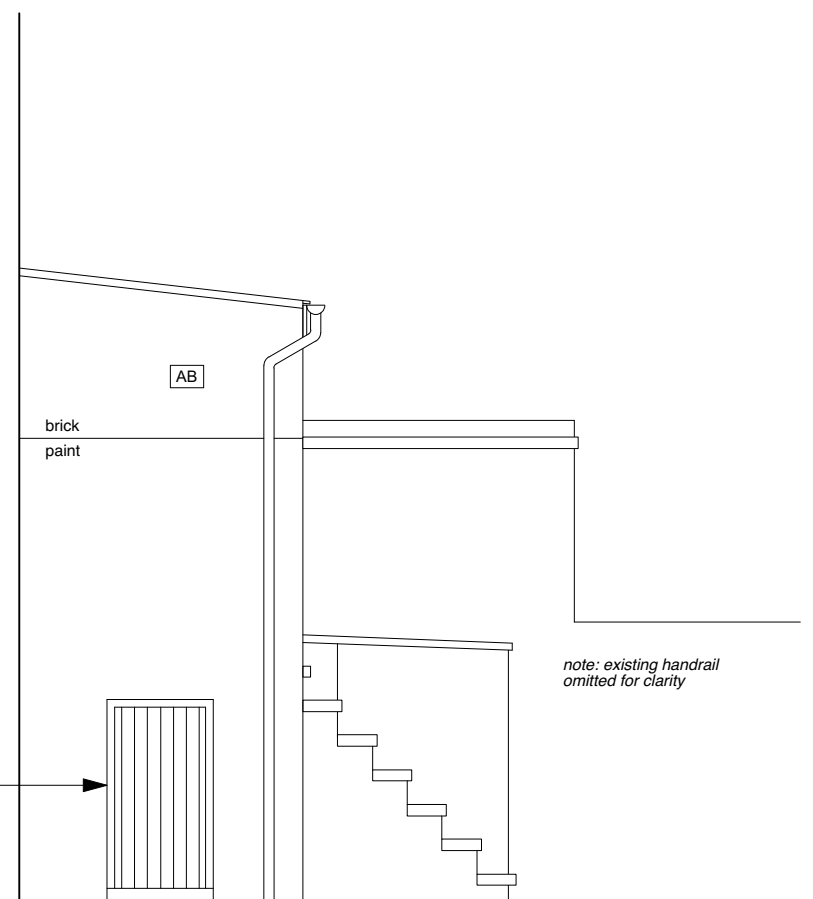
-  existing retained
-  line over/under/behind
-  demolished
-  new construction
-  28mm thick drylining (incorporating Newton 503 mesh & 12.5mm plasterboard)



PROPOSED FRONT AREA ARRANGEMENT
(RAILINGS/BALUSTRADING OMITTED FOR CLARITY)



REAR ELEVATION
(RAILINGS/BALUSTRADING OMITTED FOR CLARITY)



BACK EXTENSION SIDE ELEVATION
(RAILINGS/BALUSTRADING OMITTED FOR CLARITY)