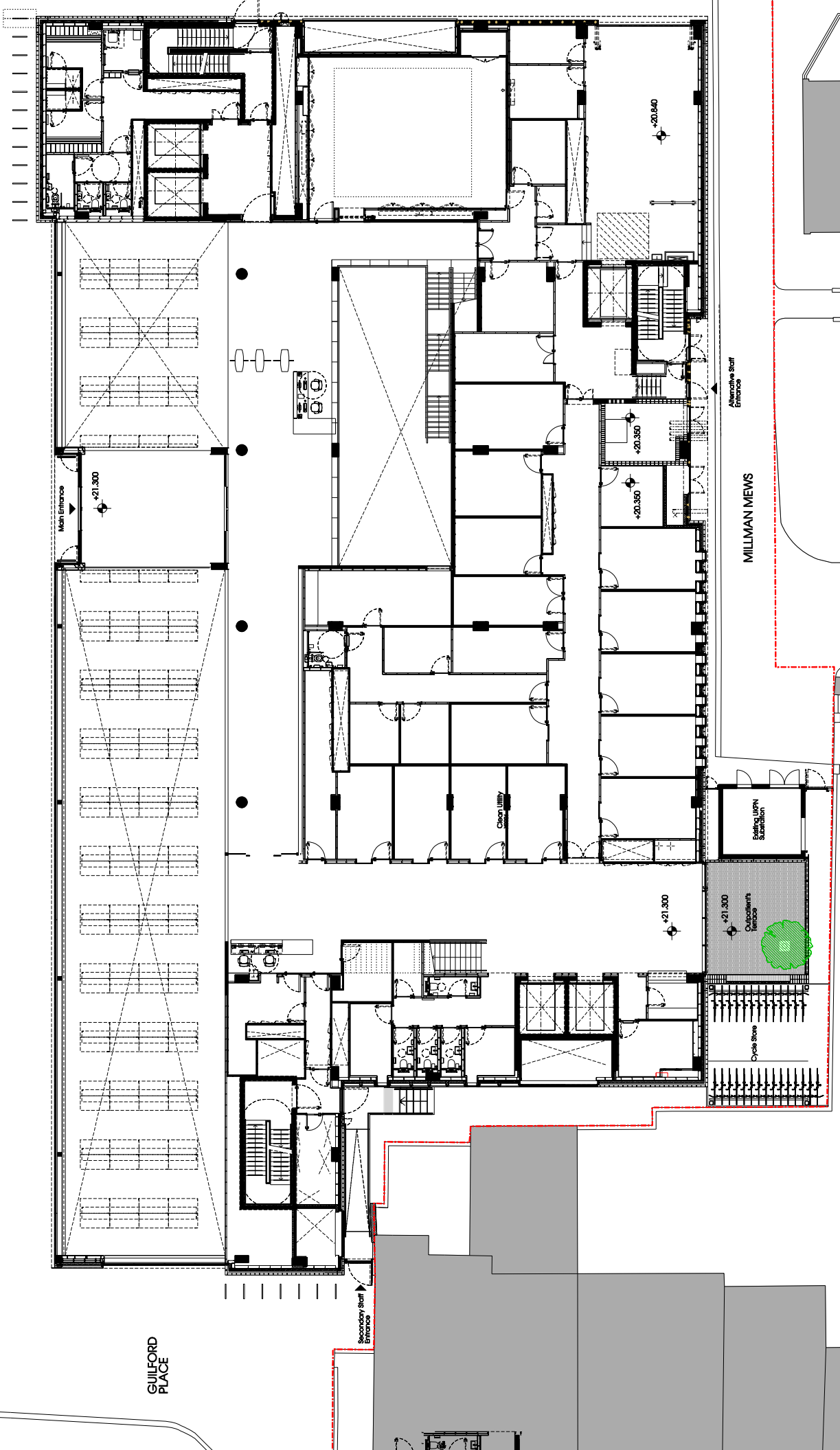


GUILFORD STREET

GUILFORD PLACE

MILLMAN STREET

MILLMAN MEWS



Notes

- Connective to check all drawings on site. Do not scale from the drawings.
- Dimensions are given in millimeters unless otherwise stated.
- All rights reserved in Copyright of the drawings.
- Work has been carried out in accordance with the specification and all relevant drawings.

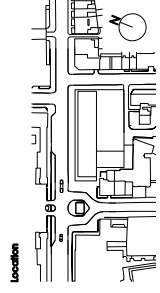
Key

- Proposed tree location
- Demise line

SUBMITTED AGAINST CONDITION 20

Revision Table

Revision	Date	Description
0	04.12.17	Issued for discharge of Planning Conditions



Stanton Williams
30 Guilford Street
London EC4A 3DF
Phone +44 (0)20 7890 4400
Email info@stantonwilliams.com
www.stantonwilliams.com

STANTON WILLIAMS

Project
Zayed Centre for Research into Rare Disease in Children
Tree replacement location plan

Date
23.09.15

Scale
Scale: A1(A3)
1:100 (1:200)

Information
Checked: [initials]
Approved: GH
Status: Information

Project No.
464

Drawing No.
SK_2348_0

Revision
0