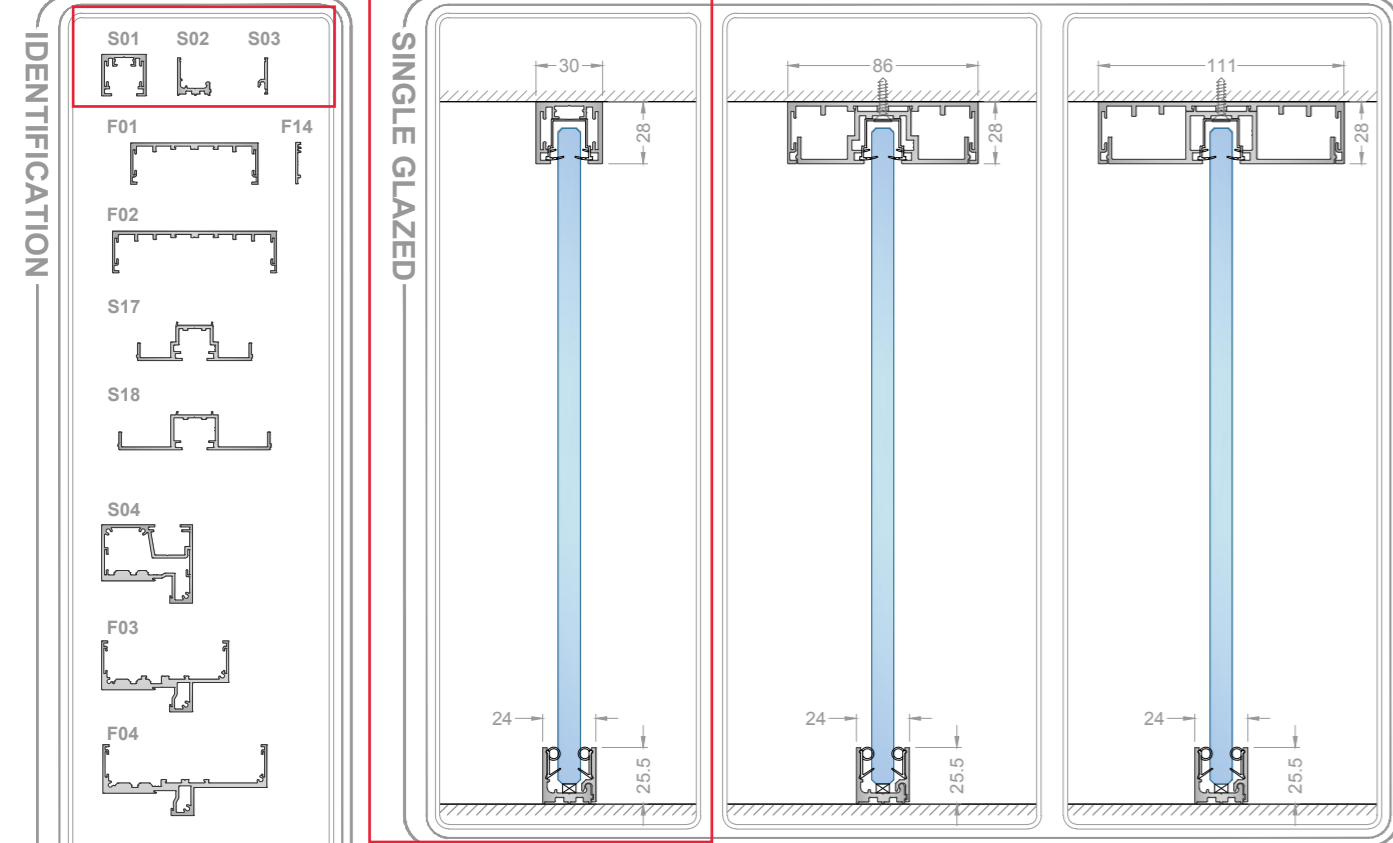
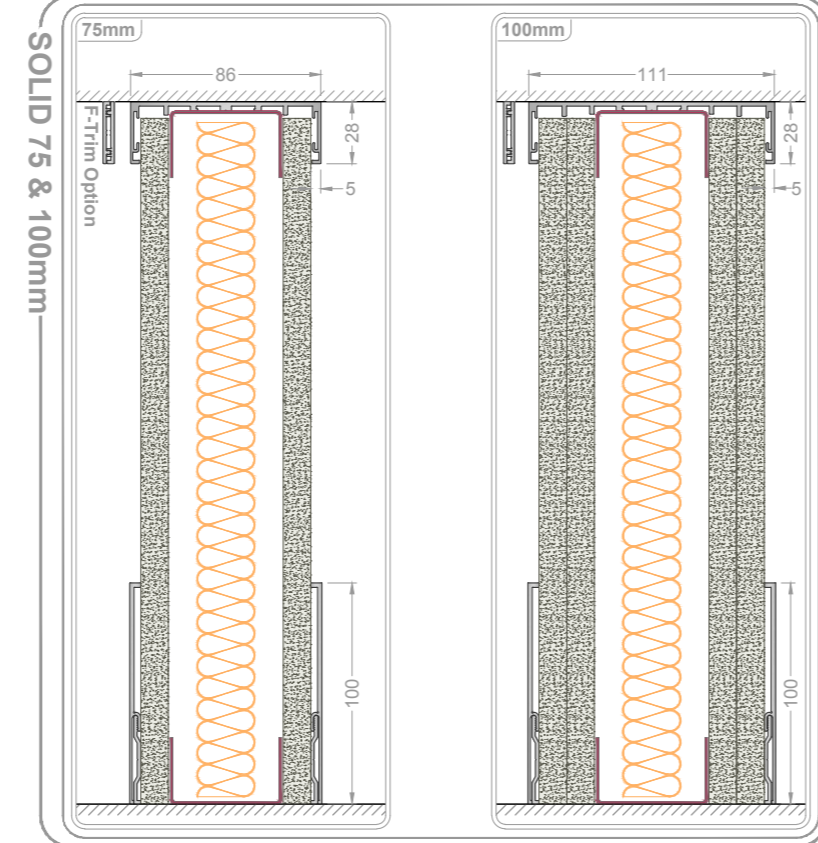


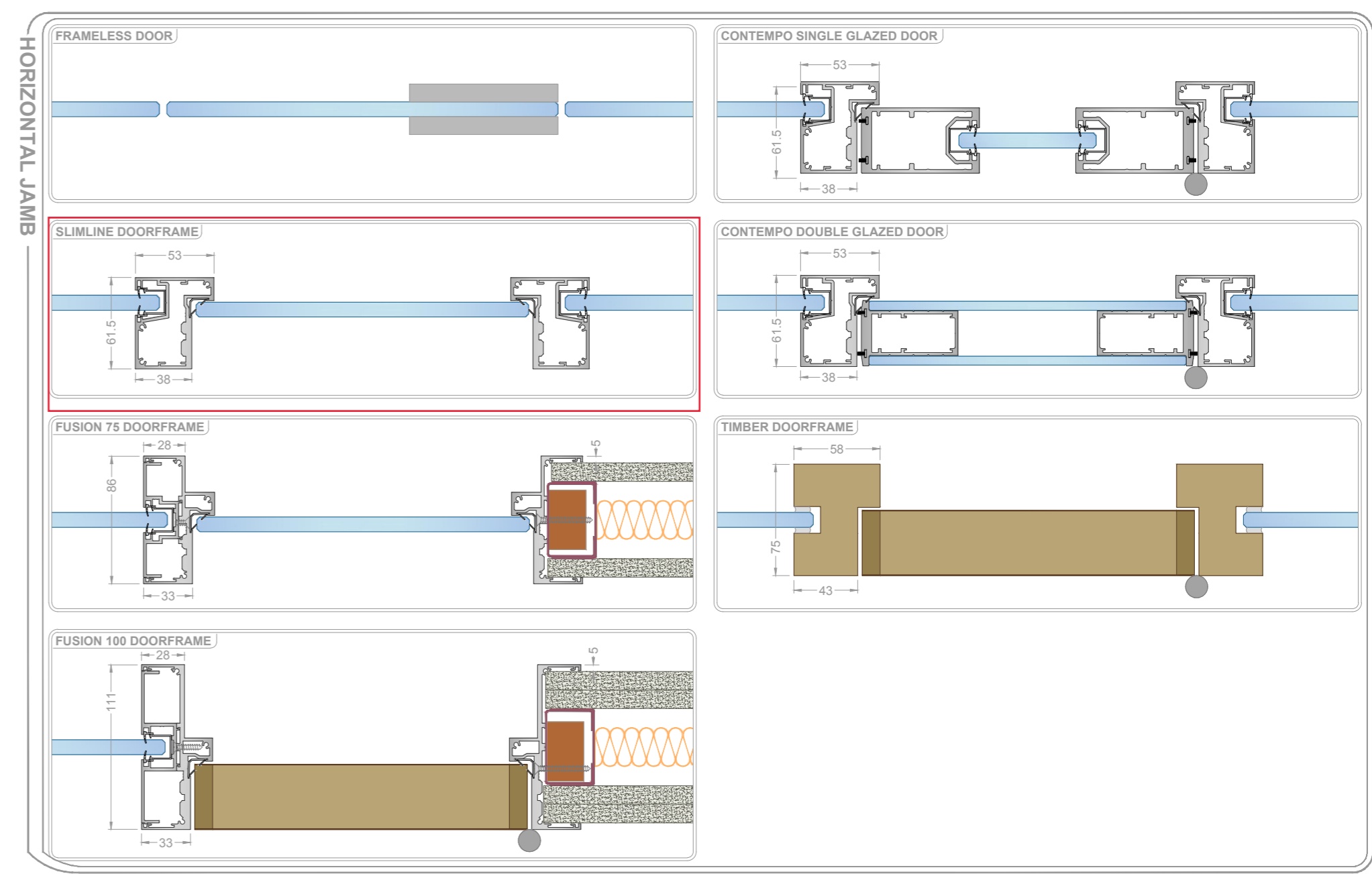
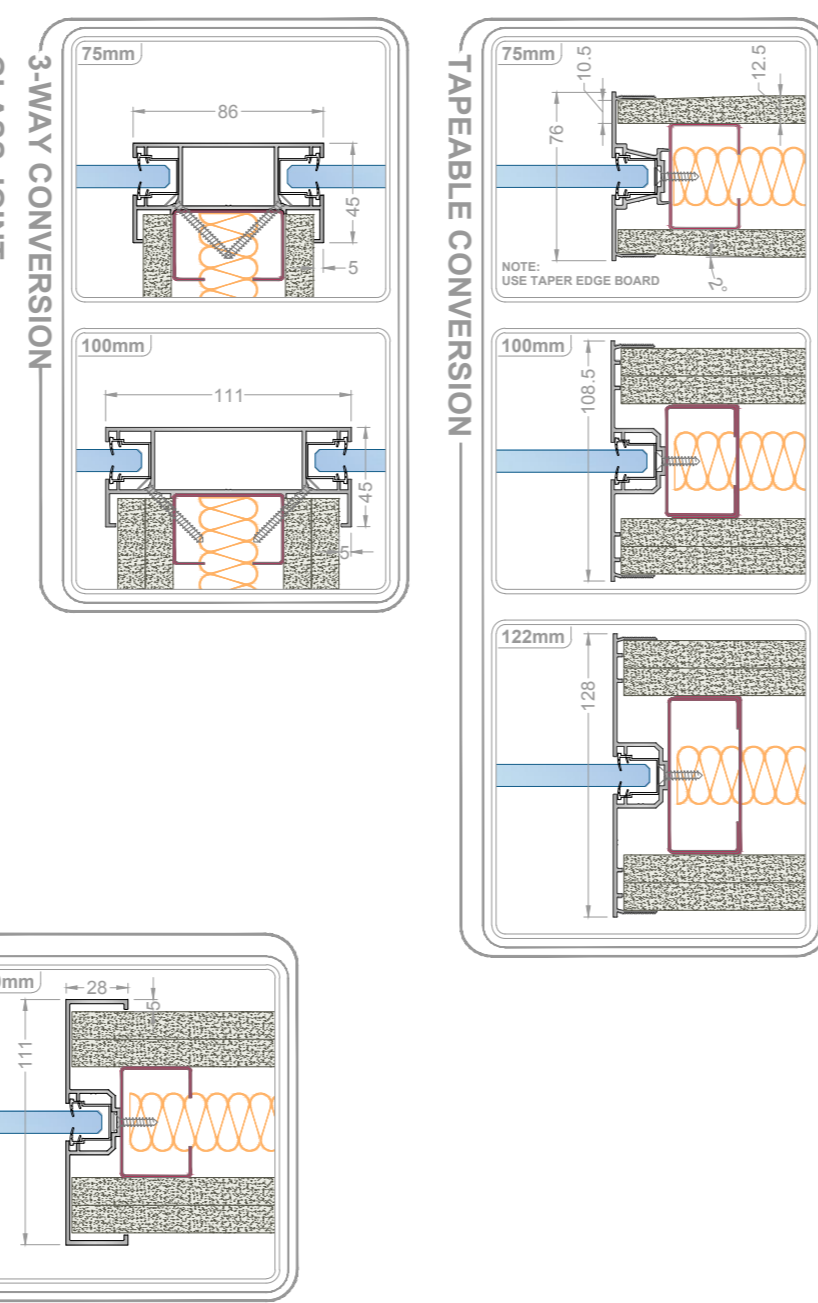
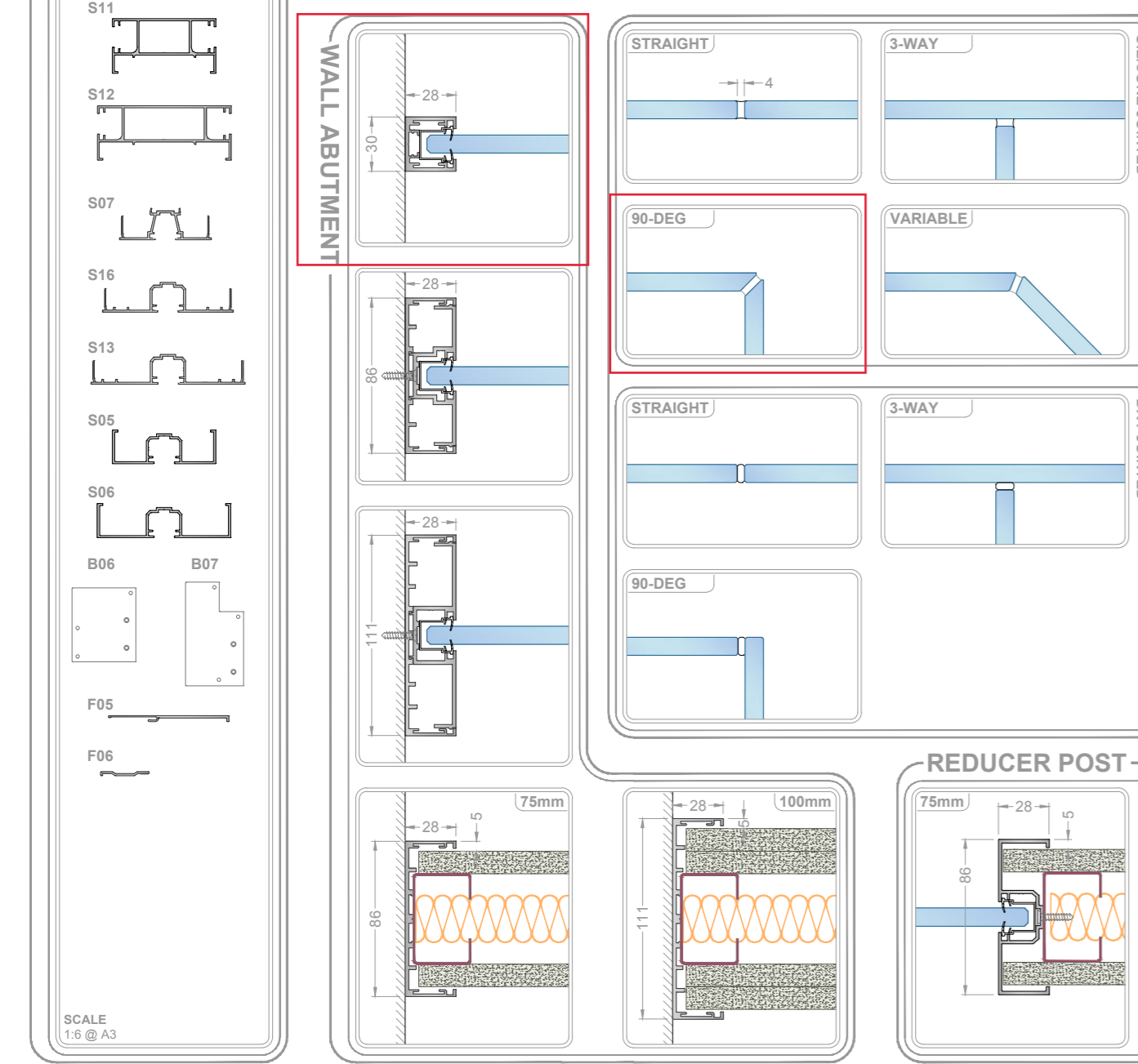
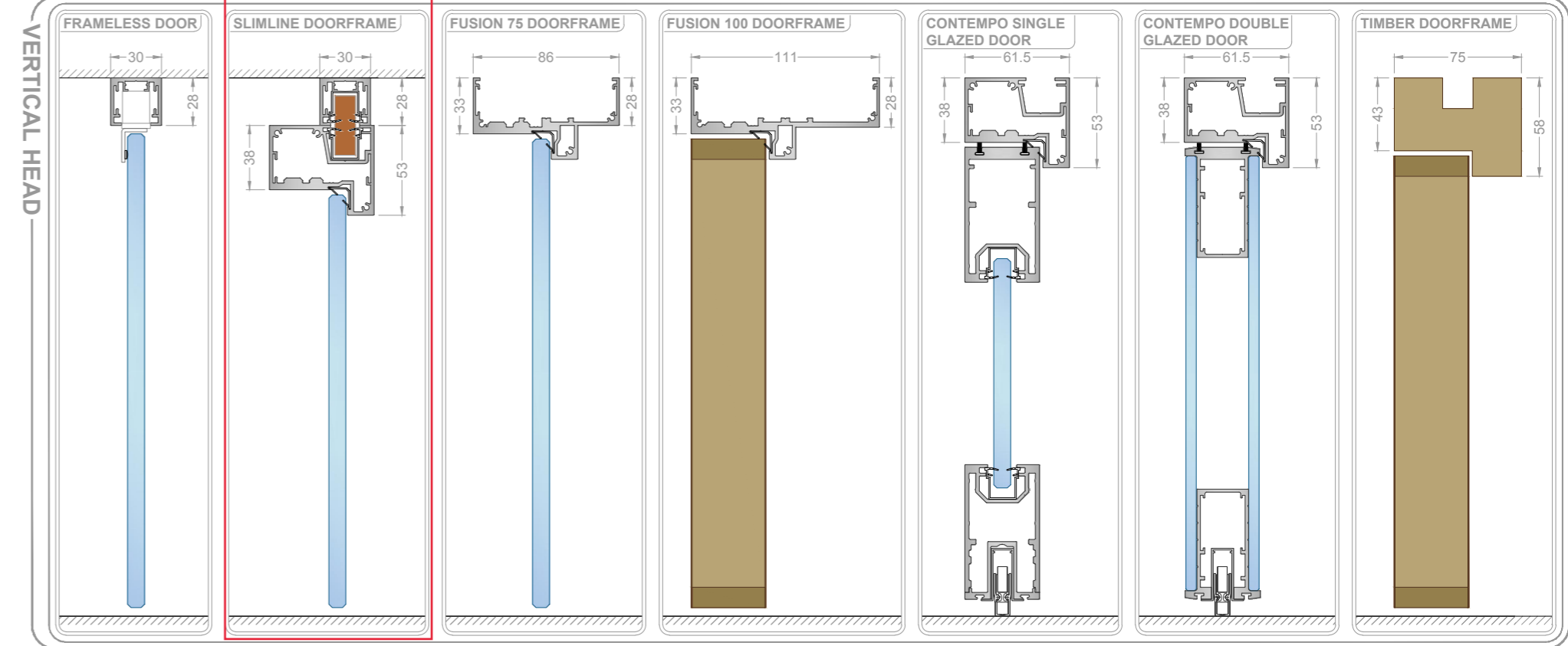
# PROFILE HEAD & BASE



# HEAD & BASE



# DOORFRAMES



Drawing Title: Clear Single Glazed  
 Scale: @ A3  
 1:4 unless stated  
 Drawn by: S.BM  
 Checked: -  
 Date: 20/03/17  
 Drawing no.: CSG-FM  
 Rev: 02



- Aluminium
- Glass
- Steel
- Gasket
- Timber
- Insulation
- Plasterboard
- Glazing Packer

Do not scale this drawing (printed or electronic versions).  
 This drawing is copyright.  
 Where necessary, details are provided within this drawing, between it and information given elsewhere, must be reported immediately to the office of origin before proceeding.  
 All works to be carried out in accordance with the latest British Standards/Codes of Practice unless specifically directed otherwise in the specification.  
 Responsibility for the reproduction of this drawing in paper form, or if used in electronic format, lies with the recipient. It is the responsibility of the recipient to check that all information has been reproduced in full and to contact when compared to the original paper or electronic image.  
 Graphical representations of details on this drawing have been reproduced but are approximate only. Please refer to specifications and/or details for actual sizes.



**Performance Summary**

System Title: Timber Doors

Document No.	Description	Rw
FTD-AP2	Timber Door 44mm in Timber Frame	36 dB
FTD-AP3	Timber Door 44mm in MDF Veneered Frame	36 dB
FTD-AP4	Timber Door 44mm in Aluminium Frame	36 dB
FTD-AP5	Timber Door 54mm in Aluminium Frame	36 dB
FTD-AP1	Timber Door 44mm in Aluminium Frame	37 dB

**Performance Summary**

System Title: Clear Single Glazed

Document No.	Description	Rw
CSG-AP1	10mm Toughened Glass	34 dB
CSG-AP2	12mm Toughened Glass	36 dB
CSG-AP3	12.8mm Acoustic Safety Glass	40 dB
CGD-AP10	Contempo 12mm Toughened Glass Door	36 dB
CGD-AP1	Contempo 12.8mm Acoustic Safety Glass Door	40 dB
CGD-AP2	Contempo 6 & 6mm Toughened Glass Door	41 dB
CGD-AP7	Contempo Type 'S' Double Glazed Door	46 dB