
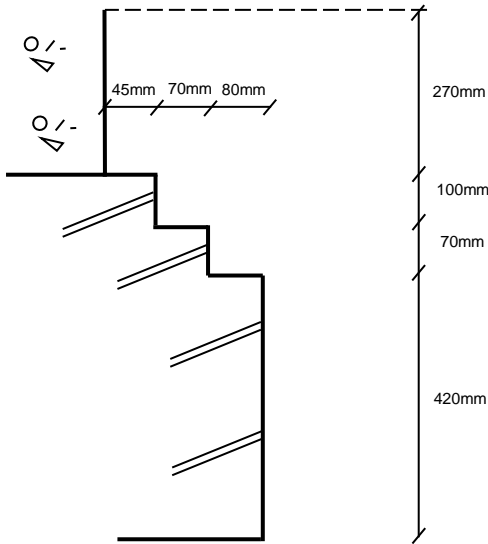


<b>Project:</b>	61 Netherhall Gardens		<b>Title:</b>	Site Investigation Plan	
<b>Address:</b>	61 Netherahall Gardens, London NW3 5RE		<b>Date:</b>	01-08-17	<b>Revision:</b> v1
			<b>Drawn:</b>	JK	 <b>Geo-Environmental</b>
<b>Grid Ref:</b>	<b>Scale:</b> Not to Scale	<b>Ref:</b>	GE16687		
<b>Client:</b>	Mr Oleg Shevshuk		<b>Figure:</b>	1	



# TH01



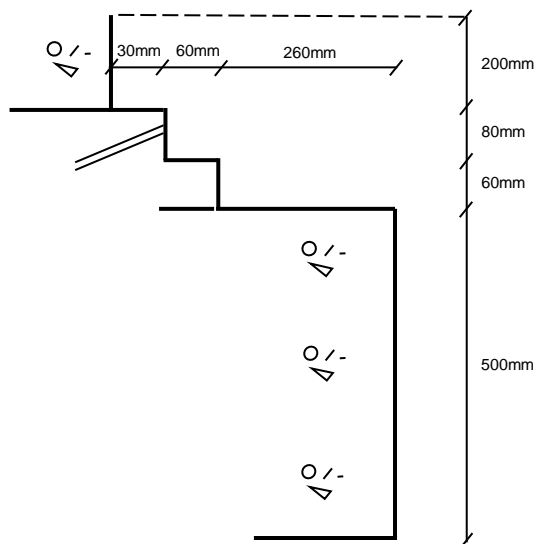
0.00m - 0.02m - Tile  
 0.02m - 0.17m - Concrete  
 0.17m - 1.00m - Yellowish brown silty sandy CLAY  
 (CLAYGATE MEMBER)



<b>Project:</b>	Netherhall Gardens, London			<b>Title</b>	TH01 (Inside Existing Basement)
<b>Client:</b>	CTP			<b>Geo-Environmental Services Limited</b> Unit 7 Danworth Farm, Cuckfield Road, Hurstpierpoint, West Sussex BN6 9GL	
<b>Ref No:</b>	GE16687	<b>Revision:</b>	v1		
<b>Drawn:</b>	JK	<b>Date:</b>	Aug-17		
<b>Figure:</b>	n/a	<b>Scale:</b>	Not To Scale		



# TH02



0.00m - 0.20m - Dark brown silty clay with frequent brick, occasional concrete, tarmacadam, clinker and roots (1-2mm). (MADE GROUND)

0.20m - 0.45m - Light brown and yellowish brown mottled sandy silty clay with occasional tarmacadam and concrete (MADE GROUND).

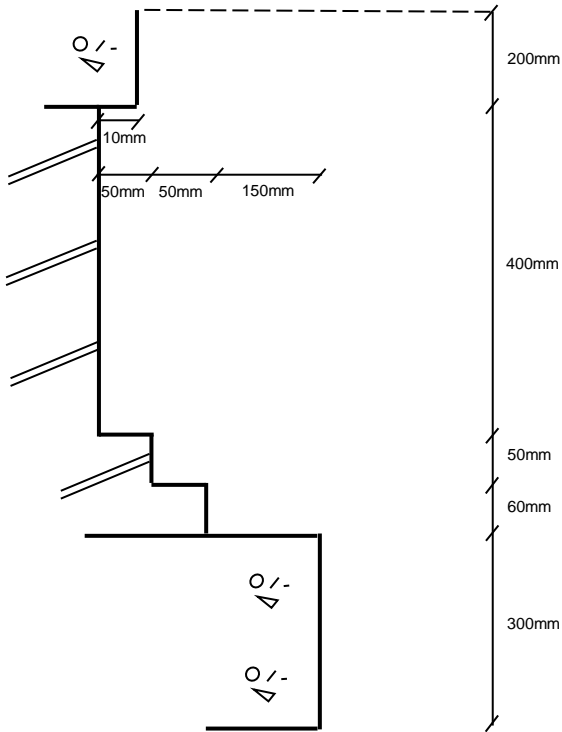
0.45m - 0.85m - Yellowish brown silty sand with occasional brick and black rounded flint gravel (MADE GROUND)



<b>Project:</b>	Netherhall Gardens, London			<b>Title</b>	TH02
<b>Client:</b>	CTP				
<b>Ref No:</b>	GE16687	<b>Revision:</b>	v1	<b>Geo-Environmental Services Limited</b> Unit 7 Danworth Farm, Cuckfield Road, Hurstpierpoint, West Sussex BN6 9GL	
<b>Drawn:</b>	JK	<b>Date:</b>	Aug-17		
<b>Figure:</b>	n/a	<b>Scale:</b>	Not To Scale		



# TH03



0.00m - 0.38m - Dark grey and light brown mottled silty clay with frequent roots (1mm), occasional slate, clinker and brick (MADE GROUND)

0.38m - 0.55m - Dark yellowish brown sandy clay with rare flint gravel and brick (MADE GROUND).

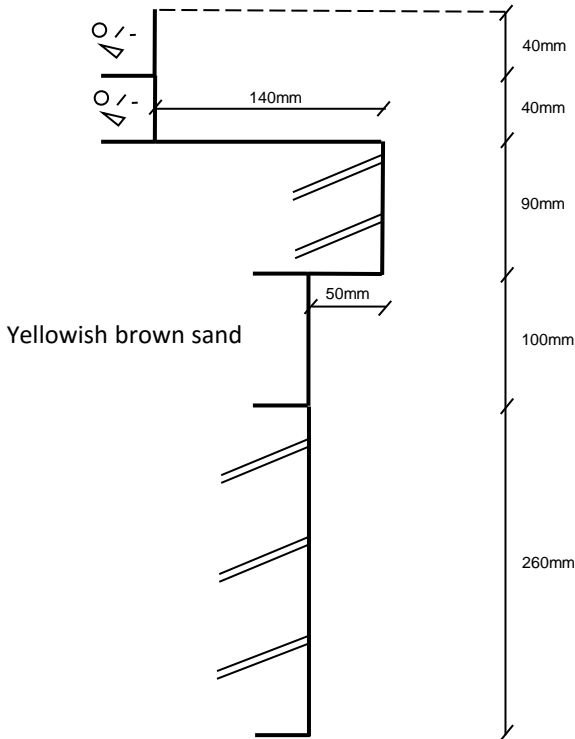
0.55m - 1.20m - Light yellowish brown clayey fine to medium SAND with occasional roots (1mm) to 0.56m bgl (CLAYGATE MEMBER)



<b>Project:</b>	Netherhall Gardens, London			<b>Title</b>	TH03
<b>Client:</b>	CTP			<p align="center"><b>Geo-Environmental Services Limited</b>  Unit 7 Danworth Farm, Cuckfield Road,  Hurstpierpoint, West Sussex BN6 9GL</p>	
<b>Ref No:</b>	GE16687	<b>Revision:</b>	v1		
<b>Drawn:</b>	JK	<b>Date:</b>	Aug-17		
<b>Figure:</b>	n/a	<b>Scale:</b>	Not To Scale		



# TH04



0.00m - 0.04m - Concrete

0.04m - 0.08m - Brown fine sand with abundant concrete and frequent brick (MADE GROUND)

0.08m - 0.26m - Dark brown sand with frequent concrete, brick and gravel (MADE GROUND)

0.26m - 0.60m - Yellowish brown silty sandy CLAY (CLAYGATE MEMBER)



<b>Project:</b>	Netherhall Gardens, London		<b>Title</b>	TH04	
<b>Client:</b>	CTP		<b>Geo-Environmental Services Limited</b> Unit 7 Danworth Farm, Cuckfield Road, Hurstpierpoint, West Sussex BN6 9GL		
<b>Ref No:</b>	GE16687	<b>Revision:</b>			v1
<b>Drawn:</b>	JK	<b>Date:</b>			Aug-17
<b>Figure:</b>	n/a	<b>Scale:</b>			Not To Scale