



**Hampstead manor project
Kidderpore avenue
Hampstead
London
NW37ST**

On Monday the 30/10/17 Langley Arboriculture Ltd have been asked by **Gareth Guest of Mount Anvil Ltd** to look at all trees at **Hampstead Manor Project**.

With a view to carrying out some remedial tree surgery on identified trees that we have recommended work to be carried out on.

Starting with tree:

(T6) Ash tree:

Looking around the base of this tree there are no signs of any movement or any fungal fruiting bodies at the time of our site visit.

Moving up main stem and into the trees canopy the tree is showing signs of apical die back also some minor damage on some of the branches, Gareth Guest the site manager has asked us to remove all dead wood and also tidy up damaged branches. As these branches at present time are overhanging new builds seating area. Looking around this location there are a number of dead branches which have been blown out of the tree in high winds.

Recommendations:

Carryout dead wooding operation in the interests of safety to protect work force on site and residents when they move in to their new homes. Also tidy up all damaged branches back to suitable growth points as per BS3998- revised 2010.



Moving to left hand side there is a lime tree:

(T9) Lime tree:

Looking around the base of this tree there are no signs of any movement or any fungal fruiting bodies at the time of our site visit.

Looking up into the trees canopy there are a number of broken branches lodged within the tree these will need to be removed in the interests of safety, also the tree would benefit by a 20% crown thin and as this tree is under mature in age this help the tree to have a well-balanced and even crown. This will let air and light penetrate the tree and reduce wind sail.

Recommendations:

Remove all damaged branches prune back to suitable growth points as per BS3998 – revised 2010. Also, carryout crown thin by 20%.



Moving on:

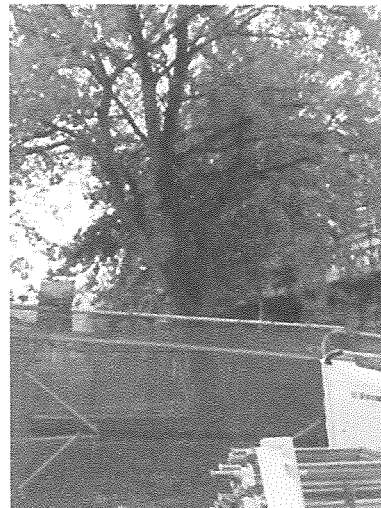
(T20) Oak tree:

Looking around the base of this tree there are no signs of any movement or any fungal fruiting bodies at the time of our site visit.

Looking up into the trees canopy there are a number of dead branches throughout the tree which will need to be removed in the interests of safety due to high target area.

Recommendations:

To remove deadwood from crown of tree and tidy up any damaged branches, all work to be carried out to BS3998 – revised 2010.



Moving on:

(T52) Polonia tree:

Looking around the base of this tree there are no signs of any movement or any fungal fruiting bodies at the time of our site visit.

Looking up into the trees canopy there are signs of broken off branches which are showing old stumps with suitable growth points growing on them. We would suggest being cut back to suitable growth points. Also, there are a number of dead branches which are overhanging walkways, these will need to be removed in the interests of safety.



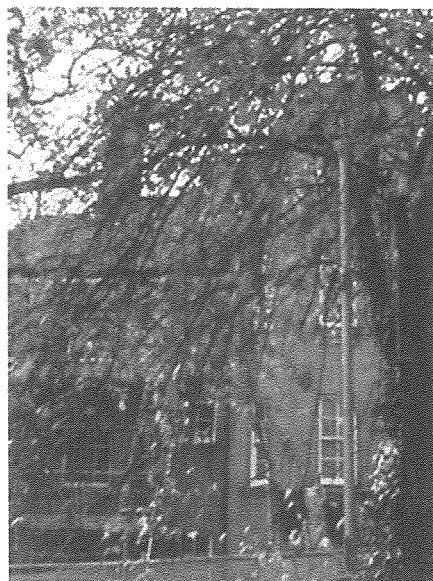
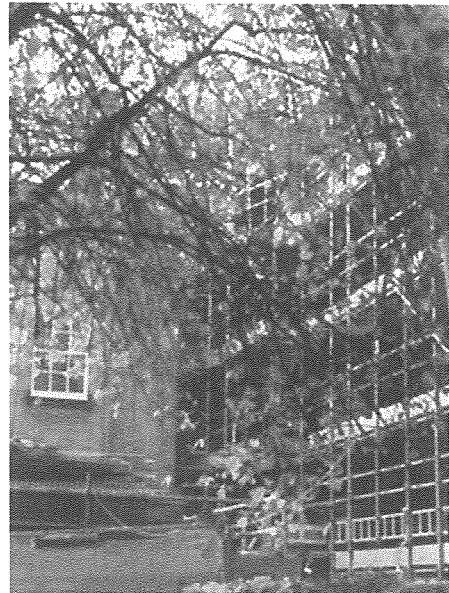
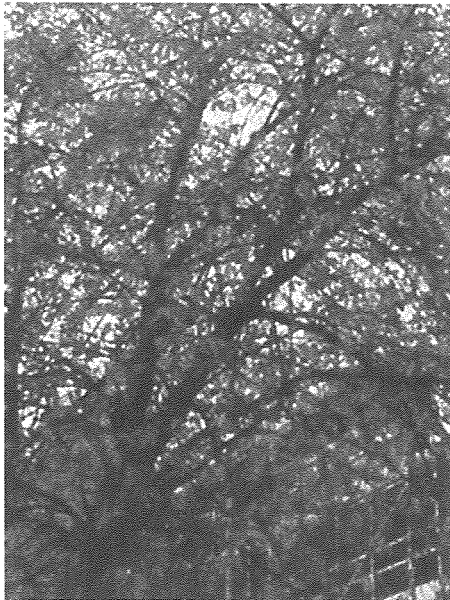
Moving to right hand side:

(T53) Bird cherry:

Looking around the base of this tree due to ivy clad around base of tree and growing up main stem we are unable to see if tree is moving or any fungal fruiting bodies are present at the time of our site visit. So, we have asked to have the ivy cut to allow it to die off. This will benefit the tree. Also, the lower branches are overhanging walkway which will need to be raised to approx. 8 feet all round this keep the crown balanced. We would also suggest that the crown would benefit a crown thin by 20% which then would allow air and light to penetrate the tree.

Recommendations:

Cut and remove ivy from tree, carryout crown thin by 20 %, crown raise all round to approx. 8 feet.



Moving along on righthand side:

(T1) Walnut tree:

Looking around the base of this tree there are no signs of any movement or any fungal fruiting bodies at the time of our site visit.

Moving up into main stem there are a number of dead branches which need to be removed in the interests of safety due to high target area.

Recommendations:

To remove all deadwood this is to be done in winter if not when tree is in full leaf, due to in spring the tree will bleed heavily.

All work to be carried out to BS3998 – REVISED 2010.



Moving on:

(T50) Hornbeam:

Looking around the base of this tree there are no signs of any movement or any fungal fruiting bodies at time of our site visit. Moving up into the trees canopy on south elevation there are some branches that have been damaged some time age, these will need to be prune back to suitable growth points. Also on north elevation again there are a number of branches with some damage again these need to be pruned back to suitable growth points as per BS3998 – REVISED 2010.

Recommendations:

Prune all damaged branches back to suitable growth points, and remove any major deadwood. All work to be carried out in winter or when the tree is in full leaf due to heavy bleeds in spring.



Moving on front of building on footpath:

(T35) Oak:

Looking around the base of this tree there are no signs of any movement or any fungal fruiting bodies at the time of our site visit.

Recommendations:

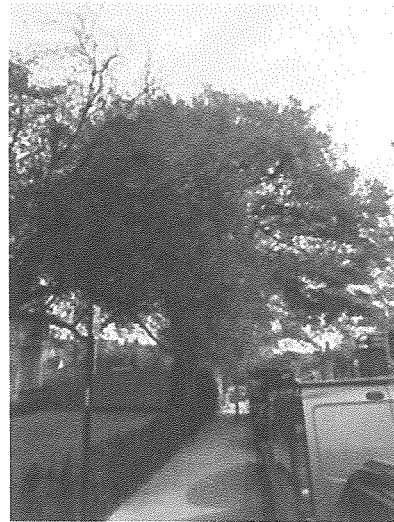
NO WORK REQUIRED.

(T34) Purple leaved plum tree:

Looking around the base of this tree there are no signs of any movement or any fungal fruiting bodies at the time of our site visit. But this tree is leaning and overhanging the foot path, at kidderpore avenue. Which will be problem for members of public walking into branches when walking by.

Recommendations:

Reduce side branches back to suitable growth points 1.5 metres, this will clear the walkway also this will reduce end loading on the tree.



Moving on right hand side near building:

(T32) Maidenhair tree:

Looking around the base of this tree there no signs of any movement or any fungal fruiting bodies at the time of our site visit. Looking at main stem there is the early signs of ivy starting to grow up the lower part of the tree.

Recommendations:

Cut ivy around base of tree and remove ivy.

Moving along down to bottom of site:

(T3) Oak:

Looking around base of this tree there no signs of any movement or any fungal fruiting bodies at the time of our site visit. This tree has some ivy growing on main stem which will need to be cut leaving a gap of 30 cm gap.

No other work is required.

Recommendations:

Cut ivy around main stem and remove 30 cm gap so the ivy will die.

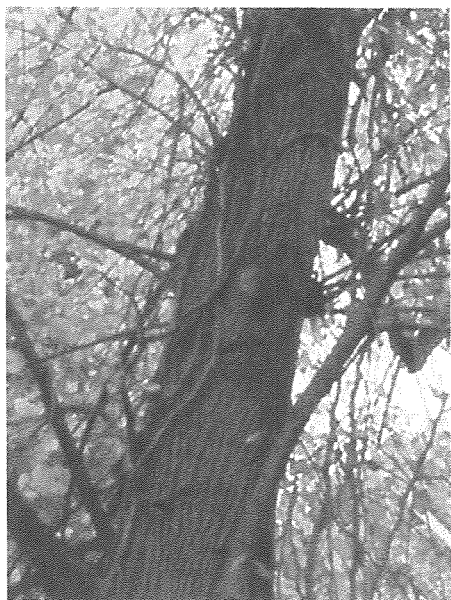
Moving along on right hand side:

(T5) Lime tree:

Looking around the base of this tree there are no signs of any movement or any fungal fruiting bodies at the time of our site visit. Looking up the main stem the ivy has been cut and now has died which will need to be removed. Moving up into the trees canopy we suggest that any deadwood is removed in the interests of safety.

Recommendations:

Remove dead ivy and also any deadwood throughout the crown of the tree.



Colin Hill
Langley arboriculture Ltd

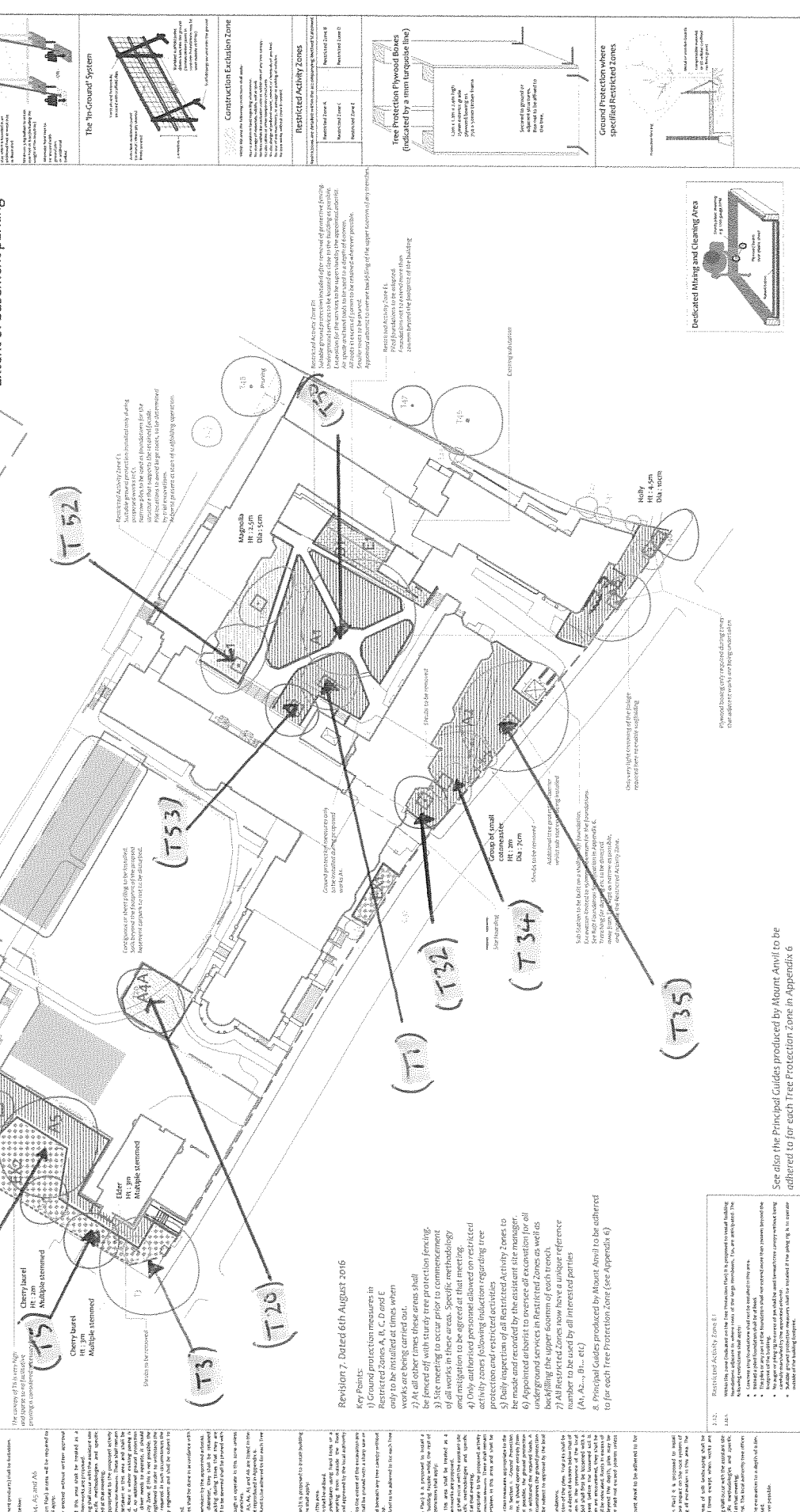
Ground protection measures shall only be installed for the least possible time.
During times when works are not being undertaken, the restricted zones shall be fenced off and the ground protection measures lifted.

See also the Mount Anvil Planned Works in Tree Root Protection Zone in Appendix 6

Existing building

Proposed new building

Extent of basement parking



Revision 7, Dated 6th August 2016

Key Points:

- 1) Ground protection measures in Restricted Zones A, B, C, D and E only to be installed at times when works are being undertaken.
- 2) All activity within Restricted Zones shall be fenced off with sturdy tree protection fencing.
- 3) Site meeting to occur prior to commencement of all works in these areas. Specific methodology and mitigation to be agreed at that meeting.
- 4) Only authorized personnel allowed on restricted activity zones following instructions regarding tree protection measures.
- 5) Design and restrict activities within Restricted Activity Zones to be made and recorded by the site manager.
- 6) Appointed arborist to oversee all excavation for all underground services in Restricted Zones as well as backfilling the upper portions of each trench.
- 7) All Restricted Zones now have a unique reference number to be used by all interested parties (A1, A2, ..., B10, etc.).
8. Principal Guides produced by Mount Anvil to be adhered to for each Tree Protection Zone (see Appendix 6)

Revision 7, Dated 6th August 2016

Tree Protection Plan

Tree Protection Barriers:
 - Low
 - Medium
 - High

The 'Back Stay System'
 - Description
 - Diagram

The 'In-Ground System'
 - Description
 - Diagram

Construction Exclusion Zone
 - Description
 - Diagram

RESTRICTED ACTIVITY ZONES
 - Description
 - Diagram

Tree Protection Plywood Boxes
 (indicated by a thin turquoise line)
 - Description
 - Diagram

Ground Protection where specified Restricted Zones
 - Description
 - Diagram

Dedicated Mixing and Cleaning Area
 - Description
 - Diagram

Revision 7, Dated 6th August 2016

Revision 7, Dated 6th August 2016

Tree Protection Plan

Tree Protection Barriers:
 - Low
 - Medium
 - High

The 'Back Stay System'
 - Description
 - Diagram

The 'In-Ground System'
 - Description
 - Diagram

Construction Exclusion Zone
 - Description
 - Diagram

RESTRICTED ACTIVITY ZONES
 - Description
 - Diagram

Tree Protection Plywood Boxes
 (indicated by a thin turquoise line)
 - Description
 - Diagram

Ground Protection where specified Restricted Zones
 - Description
 - Diagram

Dedicated Mixing and Cleaning Area
 - Description
 - Diagram

Revision 7, Dated 6th August 2016

Revision 7, Dated 6th August 2016

Tree Protection Plan

Tree Protection Barriers:
 - Low
 - Medium
 - High

The 'Back Stay System'
 - Description
 - Diagram

The 'In-Ground System'
 - Description
 - Diagram

Construction Exclusion Zone
 - Description
 - Diagram

RESTRICTED ACTIVITY ZONES
 - Description
 - Diagram

Tree Protection Plywood Boxes
 (indicated by a thin turquoise line)
 - Description
 - Diagram

Ground Protection where specified Restricted Zones
 - Description
 - Diagram

Dedicated Mixing and Cleaning Area
 - Description
 - Diagram

Revision 7, Dated 6th August 2016

Revision 7, Dated 6th August 2016

Tree Protection Plan

Tree Protection Barriers:
 - Low
 - Medium
 - High

The 'Back Stay System'
 - Description
 - Diagram

The 'In-Ground System'
 - Description
 - Diagram

Construction Exclusion Zone
 - Description
 - Diagram

RESTRICTED ACTIVITY ZONES
 - Description
 - Diagram

Tree Protection Plywood Boxes
 (indicated by a thin turquoise line)
 - Description
 - Diagram

Ground Protection where specified Restricted Zones
 - Description
 - Diagram

Dedicated Mixing and Cleaning Area
 - Description
 - Diagram

Revision 7, Dated 6th August 2016

Revision 7, Dated 6th August 2016

Tree Protection Plan

Tree Protection Barriers:
 - Low
 - Medium
 - High

The 'Back Stay System'
 - Description
 - Diagram

The 'In-Ground System'
 - Description
 - Diagram

Construction Exclusion Zone
 - Description
 - Diagram

RESTRICTED ACTIVITY ZONES
 - Description
 - Diagram

Tree Protection Plywood Boxes
 (indicated by a thin turquoise line)
 - Description
 - Diagram

Ground Protection where specified Restricted Zones
 - Description
 - Diagram

Dedicated Mixing and Cleaning Area
 - Description
 - Diagram

Revision 7, Dated 6th August 2016

Revision 7, Dated 6th August 2016

Tree Protection Plan

Tree Protection Barriers:
 - Low
 - Medium
 - High

The 'Back Stay System'
 - Description
 - Diagram

The 'In-Ground System'
 - Description
 - Diagram

Construction Exclusion Zone
 - Description
 - Diagram

RESTRICTED ACTIVITY ZONES
 - Description
 - Diagram

Tree Protection Plywood Boxes
 (indicated by a thin turquoise line)
 - Description
 - Diagram

Ground Protection where specified Restricted Zones
 - Description
 - Diagram

Dedicated Mixing and Cleaning Area
 - Description
 - Diagram

Revision 7, Dated 6th August 2016

Revision 7, Dated 6th August 2016

Tree Protection Plan

Tree Protection Barriers:
 - Low
 - Medium
 - High

The 'Back Stay System'
 - Description
 - Diagram

The 'In-Ground System'
 - Description
 - Diagram

Construction Exclusion Zone
 - Description
 - Diagram

RESTRICTED ACTIVITY ZONES
 - Description
 - Diagram

Tree Protection Plywood Boxes
 (indicated by a thin turquoise line)
 - Description
 - Diagram

Ground Protection where specified Restricted Zones
 - Description
 - Diagram

Dedicated Mixing and Cleaning Area
 - Description
 - Diagram

Revision 7, Dated 6th August 2016

Revision 7, Dated 6th August 2016

Tree Protection Plan

Tree Protection Barriers:
 - Low
 - Medium
 - High

The 'Back Stay System'
 - Description
 - Diagram

The 'In-Ground System'
 - Description
 - Diagram

Construction Exclusion Zone
 - Description
 - Diagram

RESTRICTED ACTIVITY ZONES
 - Description
 - Diagram

Tree Protection Plywood Boxes
 (indicated by a thin turquoise line)
 - Description
 - Diagram

Ground Protection where specified Restricted Zones
 - Description
 - Diagram

Dedicated Mixing and Cleaning Area
 - Description
 - Diagram

Revision 7, Dated 6th August 2016

Revision 7, Dated 6th August 2016

Tree Protection Plan

Tree Protection Barriers:
 - Low
 - Medium
 - High

The 'Back Stay System'
 - Description
 - Diagram

The 'In-Ground System'
 - Description
 - Diagram

Construction Exclusion Zone
 - Description
 - Diagram

RESTRICTED ACTIVITY ZONES
 - Description
 - Diagram

Tree Protection Plywood Boxes
 (indicated by a thin turquoise line)
 - Description
 - Diagram

Ground Protection where specified Restricted Zones
 - Description
 - Diagram

Dedicated Mixing and Cleaning Area
 - Description
 - Diagram

Revision 7, Dated 6th August 2016

Revision 7, Dated 6th August 2016