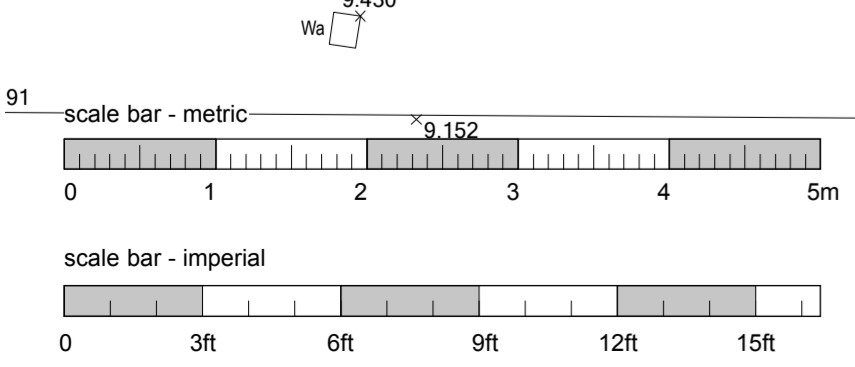
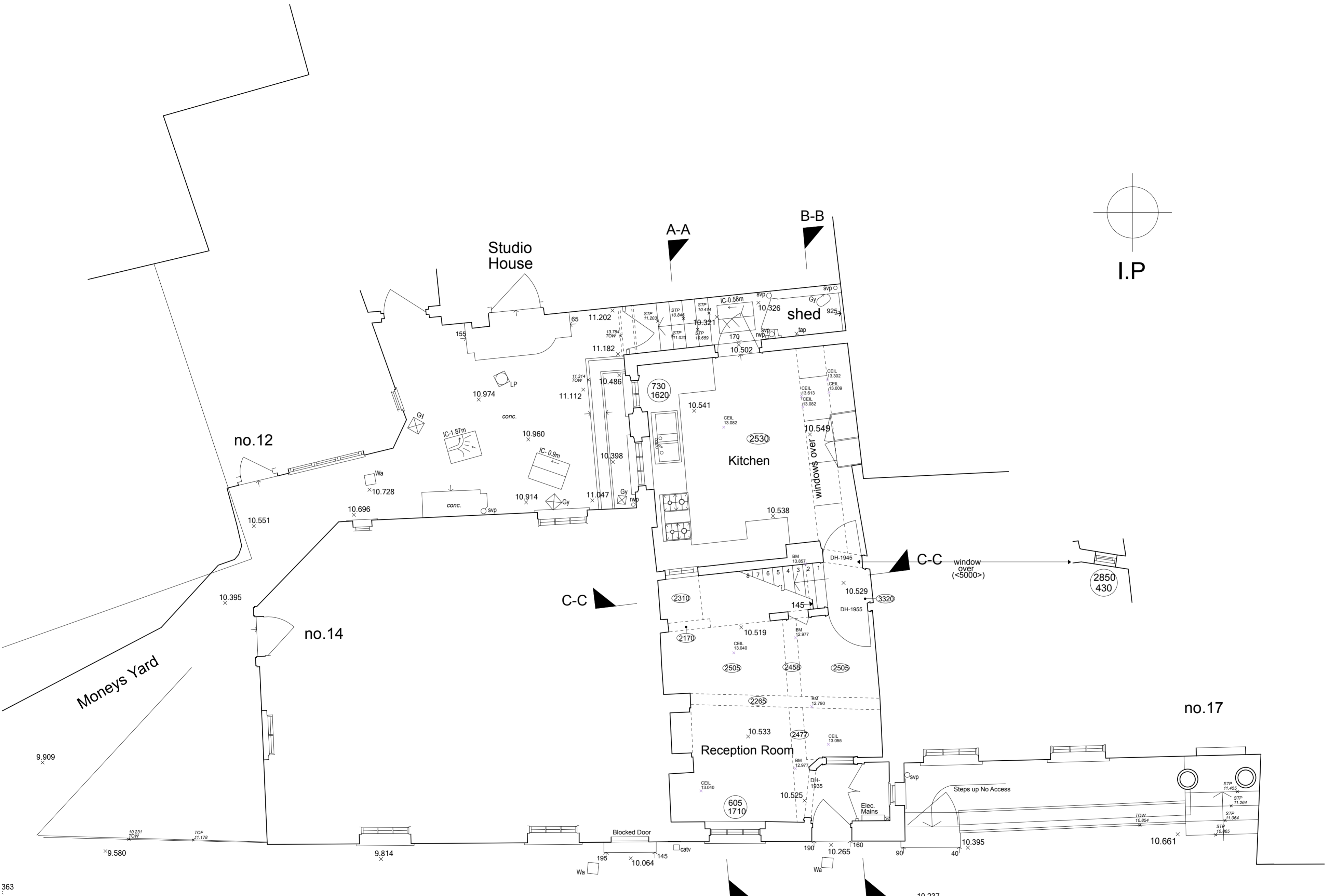


LEGEND

- AV AIR VENT
- B BOLLARD
- BB BELISHA BEACON
- BH BORE HOLE
- BL BASE/BED LEVEL
- BP BRICK PILLAR
- BS BUS STOP
- C SEWER (COMBINED)
- CAJB CABLE JUNCTION BOX
- CATV CABLE INSPECTION COVER
- CIP CABLE INSPECTION POINT
- CD CABLE DUCT
- CL COVER LEVEL
- CP CHARGING POINT - ELECTRIC CAR
- D DRAIN
- DPC DAMP PROOF COURSE
- DK DROP KERB
- EB ELECTRICITY BOX
- EIC ELECTRICITY INSPECTION COVER
- EP ELECTRICITY POLE
- ER EARTHING ROD
- F SEWER (FOUL)
- FB FLOWER BED
- FH FIRE HYDRANT
- FL FLOOR LEVEL
- Gy GULLY
- GIC GAS INSPECTION COVER
- GJB GAS JUNCTION BOX
- GV GAS VENT
- IC INSPECTION COVER
- IL INVERT LEVEL
- JB JUNCTION BOX
- LB LITTER BIN
- LP LAMP POST
- MH MANHOLE
- MK SERVICE MARKER
- MK(E) ELECTRIC SERVICE MARKER
- MK(G) GAS SERVICE MARKER
- MK(W) WATER SERVICE MARKER
- OHW OVERHEAD WIRE
- OSBM ORDNANCE SURVEY BENCH MARK
- P POST
- PT POST OFFICE TELEGRAPH
- PB POST BOX
- RE RODDING EYE
- RNP ROAD NAME PLATE
- RS ROAD SIGN
- RW RETAINING WALL
- RWP RAIN WATER PIPE
- S SEWER (STORM)
- SAP SAPLING
- SC STOP COCK
- SC(G) STOP COCK (GAS)
- SC(W) STOP COCK (WATER)
- SP SIGN POST
- SEG SIDE ENTRY GULLY
- STN SURVEY STATION
- STP SUPPORT FOR TELEPHONE POLE
- SV STOP VALVE
- SVP SOIL VENT PIPE
- TBM TEMPORARY BENCH MARK
- TCB TELEPHONE CALL BOX
- TH TRIAL HOLE
- THL THRESHOLD LEVEL
- TIC TELECOM INSPECTION COVER
- TP TELEGRAPH POLE
- TOB TOP OF BUILDING
- TOF TOP OF FENCE
- TOW TOP OF WALL
- TS TREE STUMP
- Unk UNKNOWN
- UTL UNABLE TO LIFT
- VP VENT PIPE
- WL WATER LEVEL
- WM WATER METER
- WO WASH OUT
- WTR WATER
- BM - relative level height to beam
- CEIL - relative level height to ceiling
- 730 - Height to Window Sill
- 1620 - Height of Window Sill to Head
- 2505 - Floor to ceiling height
- TREE (SPECIES / TRUNK(O)-BOLES / SPREAD(Ø) / HEIGHT)
- BANKING
- FENCE
- BUILDING
- BOUNDARY WALL
- KERB
- DROP KERB



GROUND FLOOR PLAN
Road - The Mount

Drawing Title:
Existing Ground Floor Plan: 1059-S01

Project:
**16 The Mount
London
NW3 6SZ**

Scale:
1:50@A2

Date:
October 2017

cad
SURVEYS

01233 635089
www.cadsurveys.co.uk