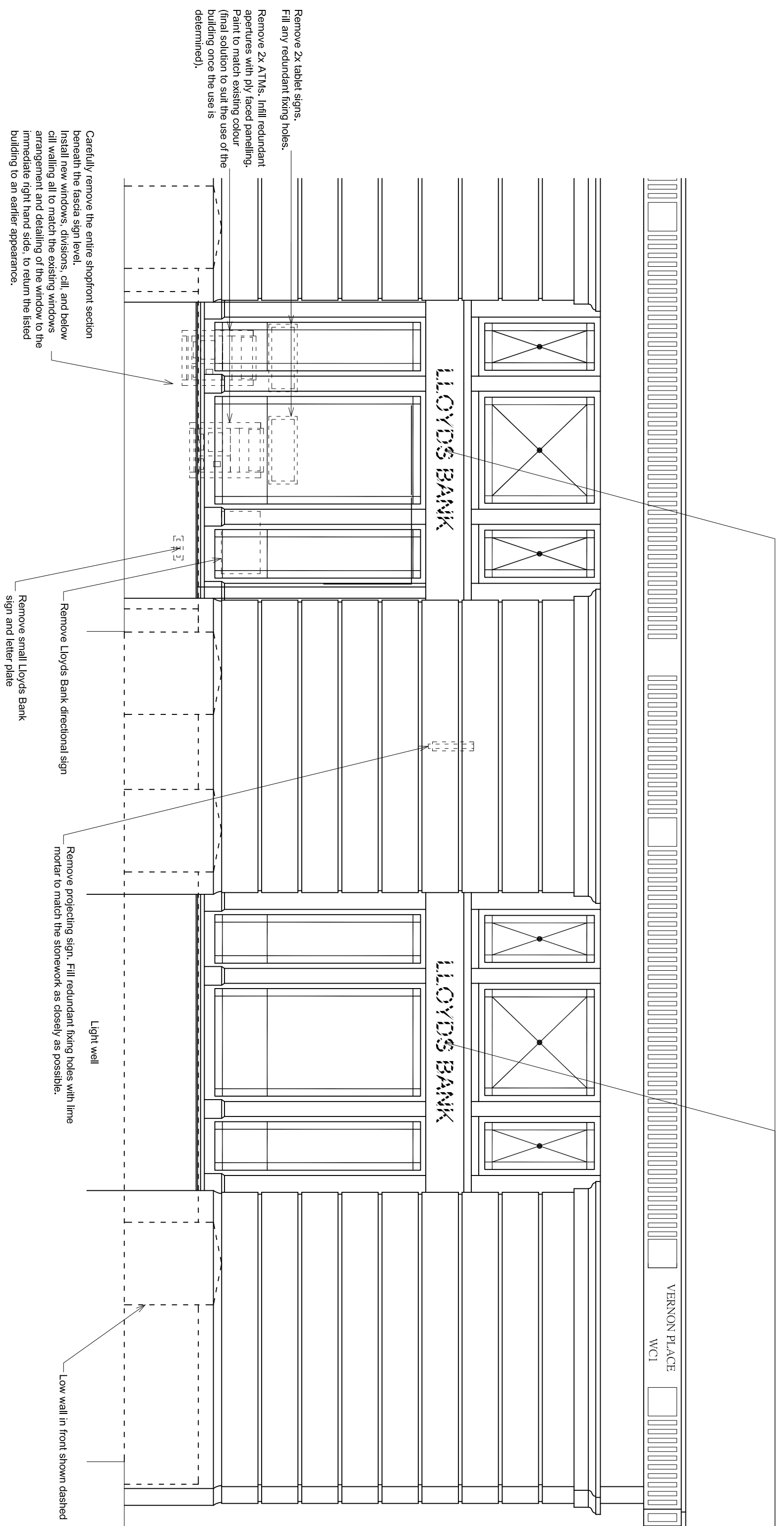
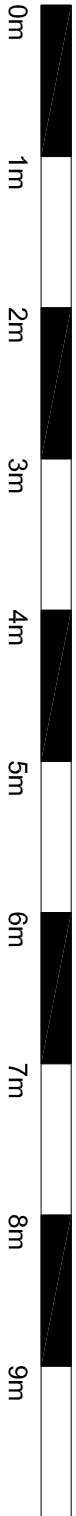
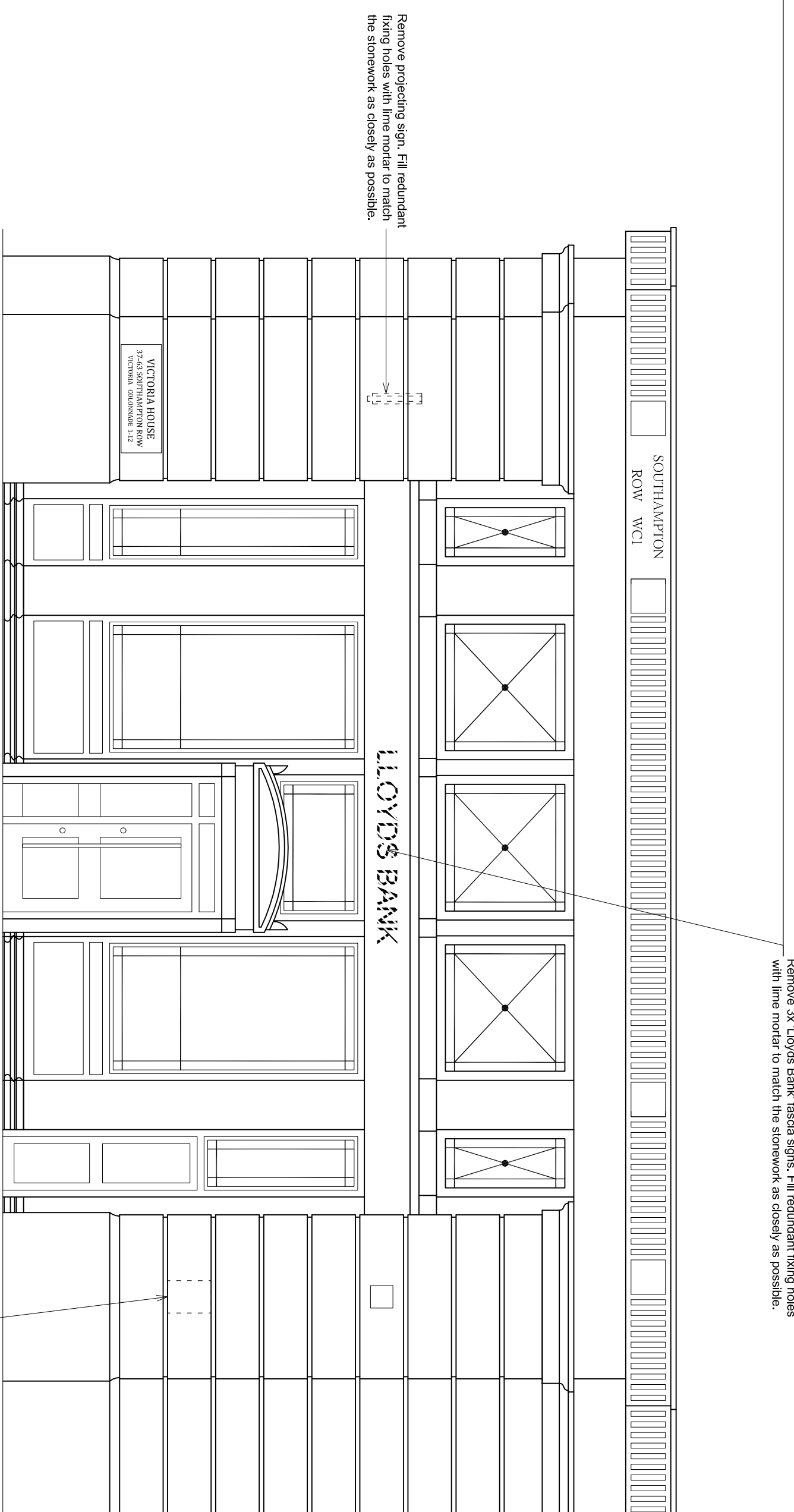


SCALE



## Elevation to Vernon Place



### Elevation to Southampton Row

REV	DATE	REVISION	INITIALS
B	04.12.2017	Enlite ATM zone shopfront is to be removed and replaced with new windows and call to match the original window to the R1 side New call and face panels introduced where ATMs removed.	TJ
A	04.12.2017		TJ/MW

**LLOYDS BANKING GROUP**

ALL DIMENSIONS TO BE VERIFIED PRIOR TO COMMENCING WORK. DRAWING TO BE READ IN CONJUNCTION WITH PROJECT SPECIFICATIONS.

THIS DRAWING IS THE PROPERTY OF LLOYDS BANKING GROUP AND COPYRIGHT IS RESERVED BY THEM. THE DRAWING IS ISSUED ON CONDITION THAT IT IS NOT COPIED OR REPRODUCED BY OR TO ANY UNAUTHORISED PERSONS WITHOUT PRIOR CONSENT IN WRITING TO LLOYDS BANKING GROUP. GROUP PROPERTY, ALL MODIFIED DRAWINGS SHOULD BE RETURNED TO LLOYDS BANKING GROUP.

## GROUP PROPERTY

BRISTOL - PO Box 112, Canons House, Canons Way, BRISTOL, BS99 7LB  
EDINBURGH - Slighthin South, 12 Bankhead Crossway South, EDINBURGH, EH11 4EN  
HALFAX - Trinity Road, HALFAX, West Yorkshire, HX1 2RG

PROJECT ADDRESS	SCALE
Brand - Lloyds TSB - BOS London, Southampton Row, Victoria House Victoria House LONDON WC1B 5HR	A1 - 150 A3 - 1:100
DRAWING ELEVATIONS	DATE
Proposed Elevations	23.07.2017
	DRAWN BY
	TJMMW

DRAWING NUMBER