

CSC3/S106
Proposed Section DD
(Block C & Block A)



CSC5/S1NMA Proposed Section DD (Block C & Block A)

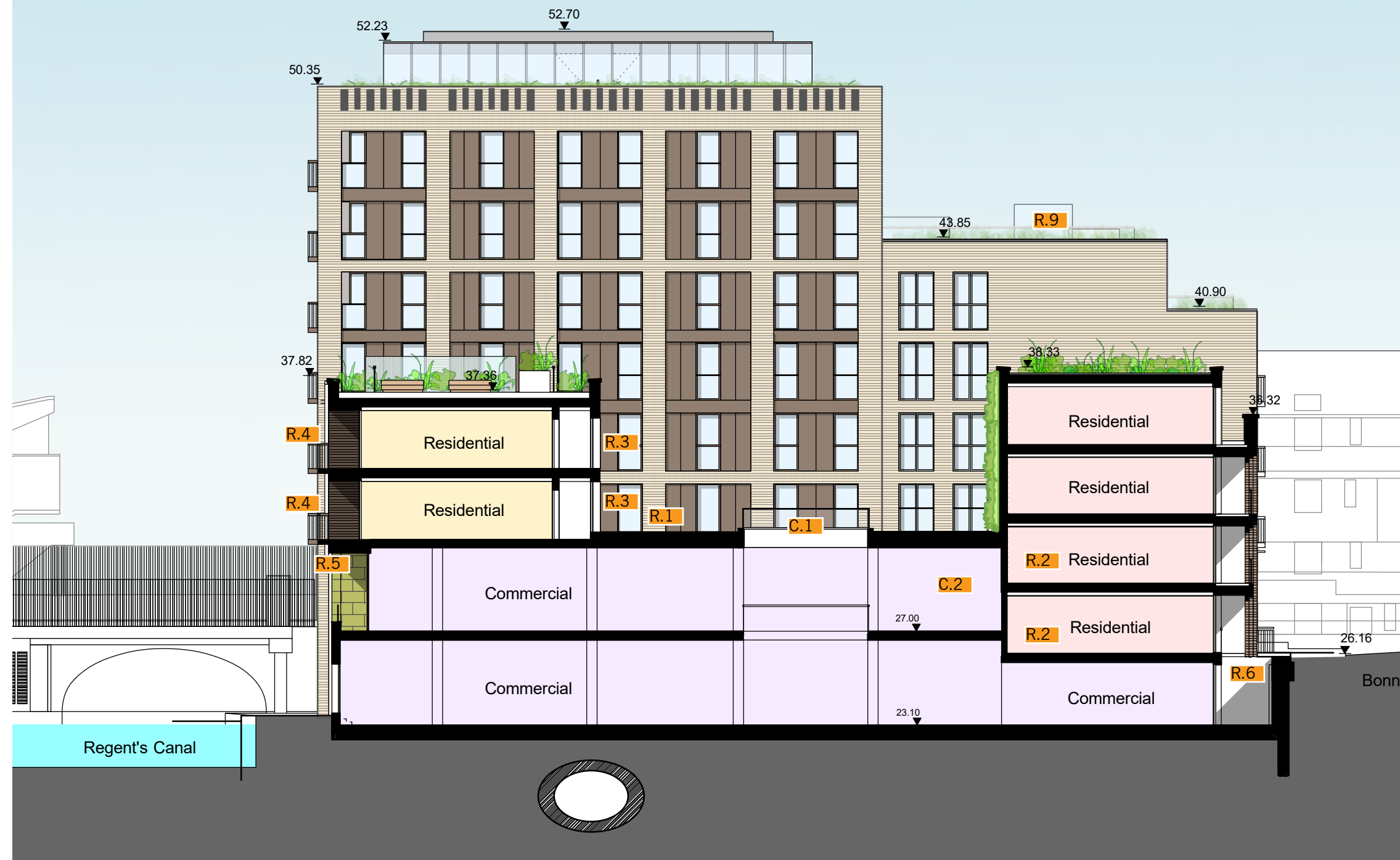
Planning amendments:

1. Residential

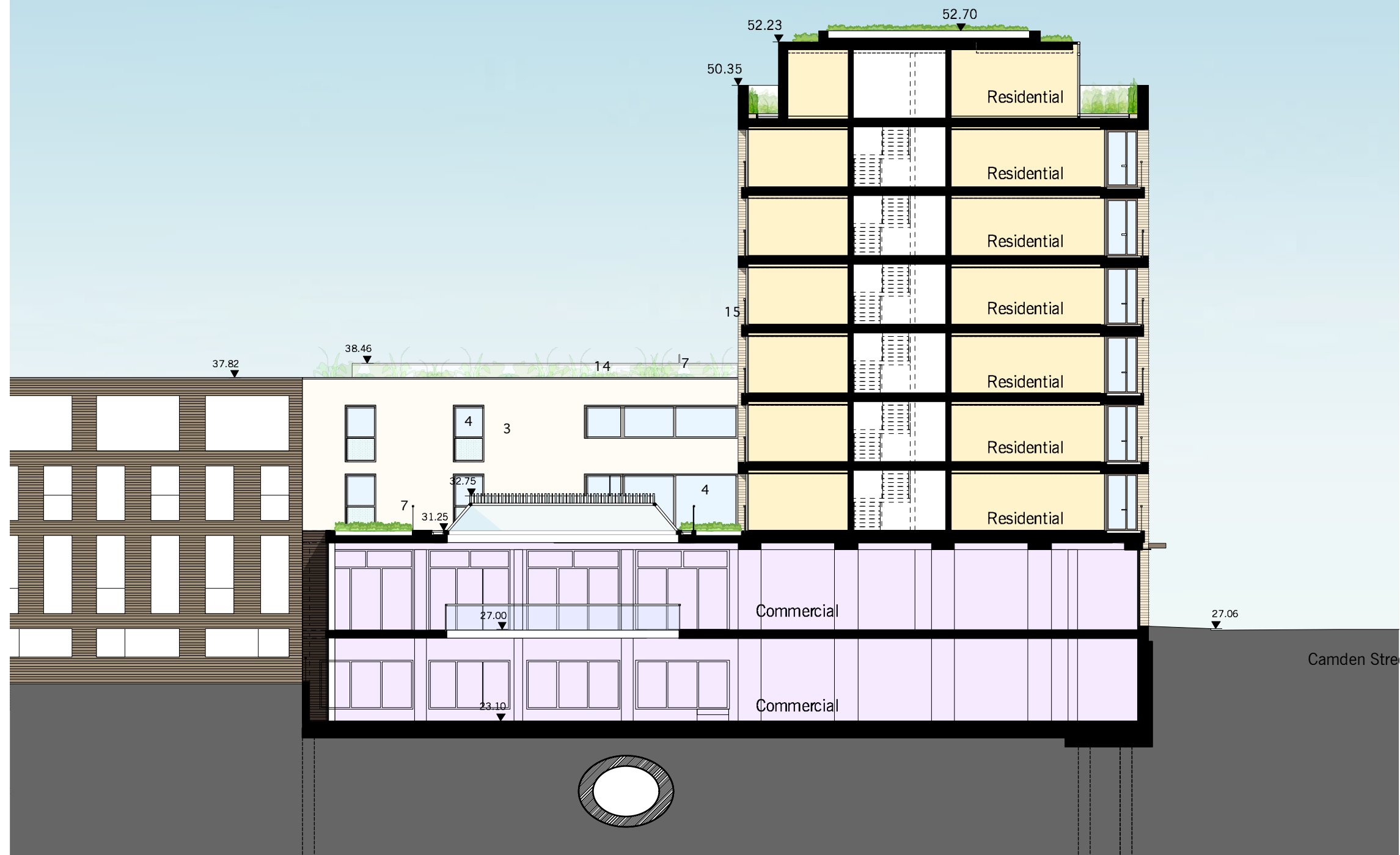
- R.1 Add private terraces in courtyard to private apartments
- R.2 Arrangement of wheelchair unit revised with living area at first floor and bedrooms on groundfloor
- R.3 Revisions to Courtyard elevations to suit internal layout of apartments
- R.4 Window alterations on Block C Canal side, window arrangement and faience columns widened
- R.5 Wall overhang along Block C Canal side at 1st floor omitted
- R.6 Block A lightwell and railings amended. Balcony at Ground level omitted.
- R.9 Stair access added to communal roof terrace

2. Commercial

- C.1 Lantern light design amendment
- C.2 Removal of external lightwell in courtyard



CSC3/S106
Proposed Section CC
(Block C & Courtyard)



CSC5/S1NMA Proposed Section CC (Block C & Courtyard)

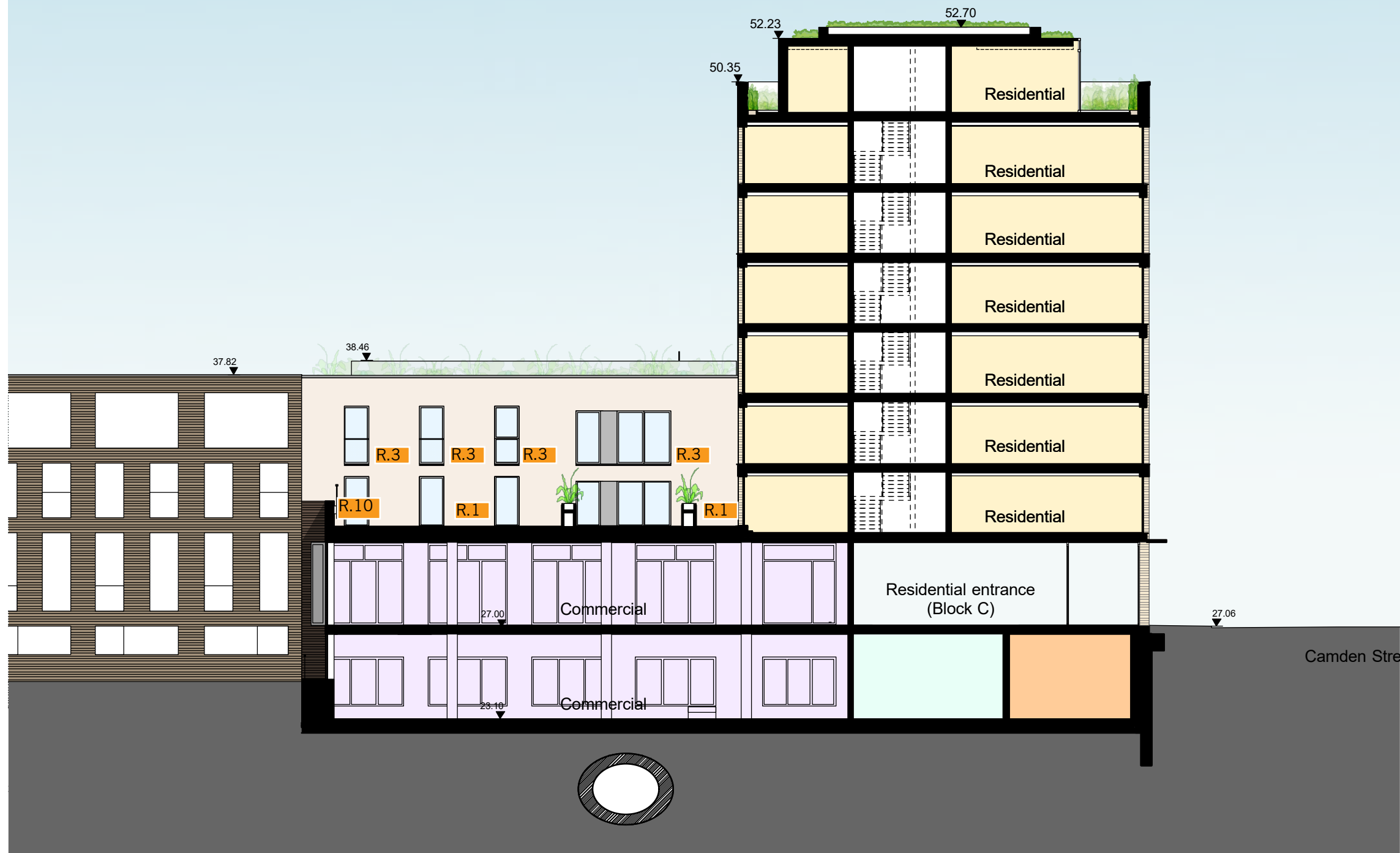
Planning amendments:

1. Residential

R.1_Add private terraces in courtyard to private apartments

R.3_ Revisions to Courtyard elevations to suit internal layout of apartments

R.10_Permanent obscure glass added. Final spec to be agreed



CSC3/S106
Proposed Section AA
(Block B)



CSC5/S1NMA Proposed Section AA (Block B)

Planning amendments:

1. Residential

R.3_ Revisions to Courtyard elevations to suit internal layout of apartments
R.9_ Stair access added to communal roof terrace
R.12_ Private terrace changed to communal terrace

2. Commercial

C.2_ Removal of external lightwell in courtyard

